

***Section 368 Energy Corridors  
Energy Policy Act of 2005***

***Initiation of Periodic Regional Reviews***

***James Gazewood, National Project Manager  
Georgeann Smale, Bureau Sec. 368 Program Lead  
BLM Washington Office***

***Konnie Wescott, Project Manager  
Jim Kuiper, Principal Geospatial Engineer  
Argonne National Laboratory***

***Section 368  
West-wide Energy Corridors***



## **Presentation Outline**

- ❑ *Background: The Section 368 Energy Corridors*
- ❑ *Three Year Schedule to Conduct Six Regional Reviews*
- ❑ *Overview of a Regional Review: The Two Public Input Phases*
- ❑ *Our End Product: Land Use Plan Recommendations*
- ❑ *Tools to Facilitate Stakeholder Understanding & Critical Input*
- ❑ *BLM & USFS Desire for Robust Stakeholder Engagement*



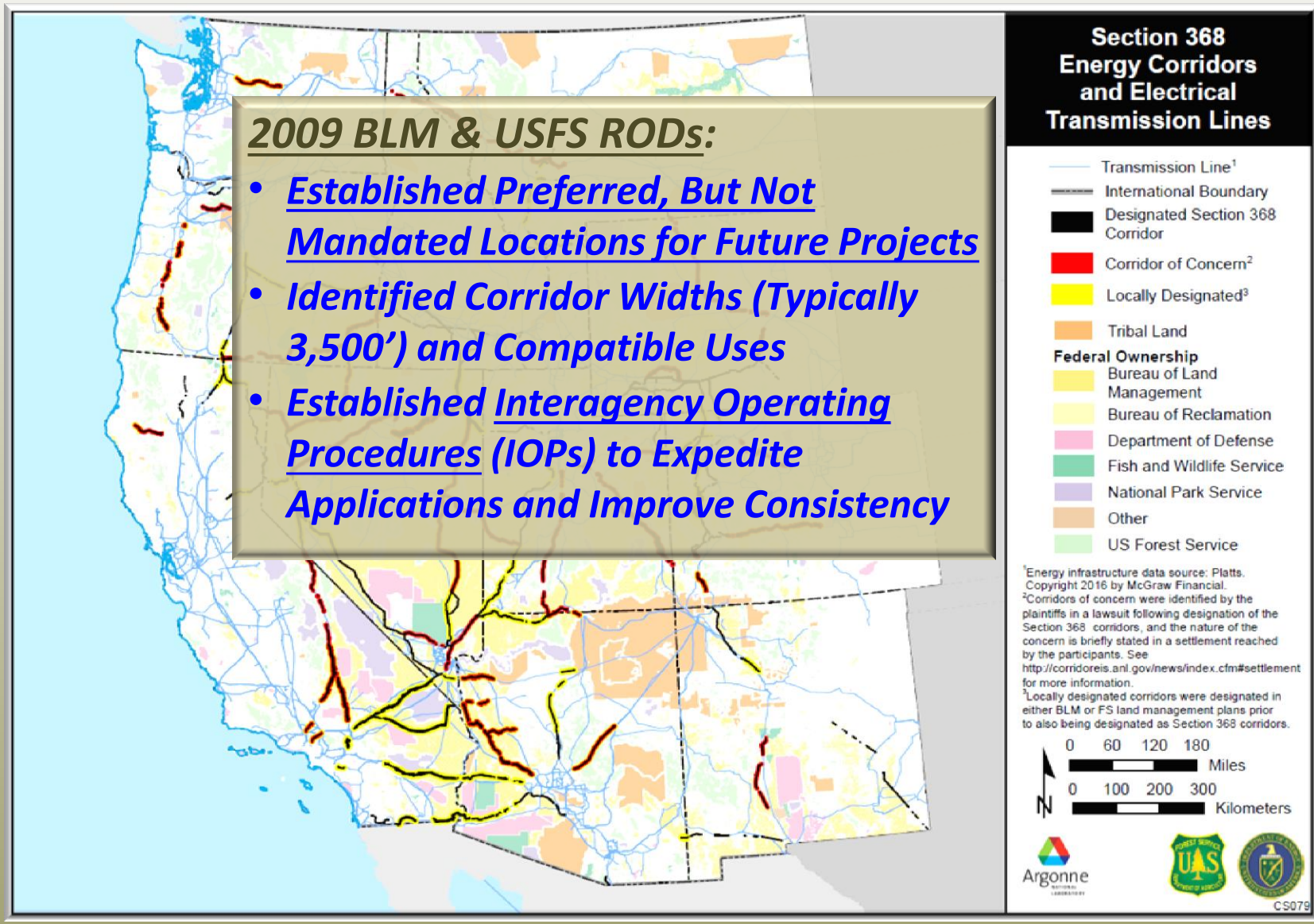
# Background: Section 368 Energy Corridors

## Established under the 2005 Energy Policy Act:

- ✓ Energy Corridors in AZ, CA, CO, ID, MT, NV, NM, OR, UT, WA and WY
- ✓ For BLM: 5,000 Miles / 92 Land Use Plan Amendments
- ✓ For USFS: 990 Miles / 38 Land Use Plan Amendments



# Background: Section 368 Energy Corridors

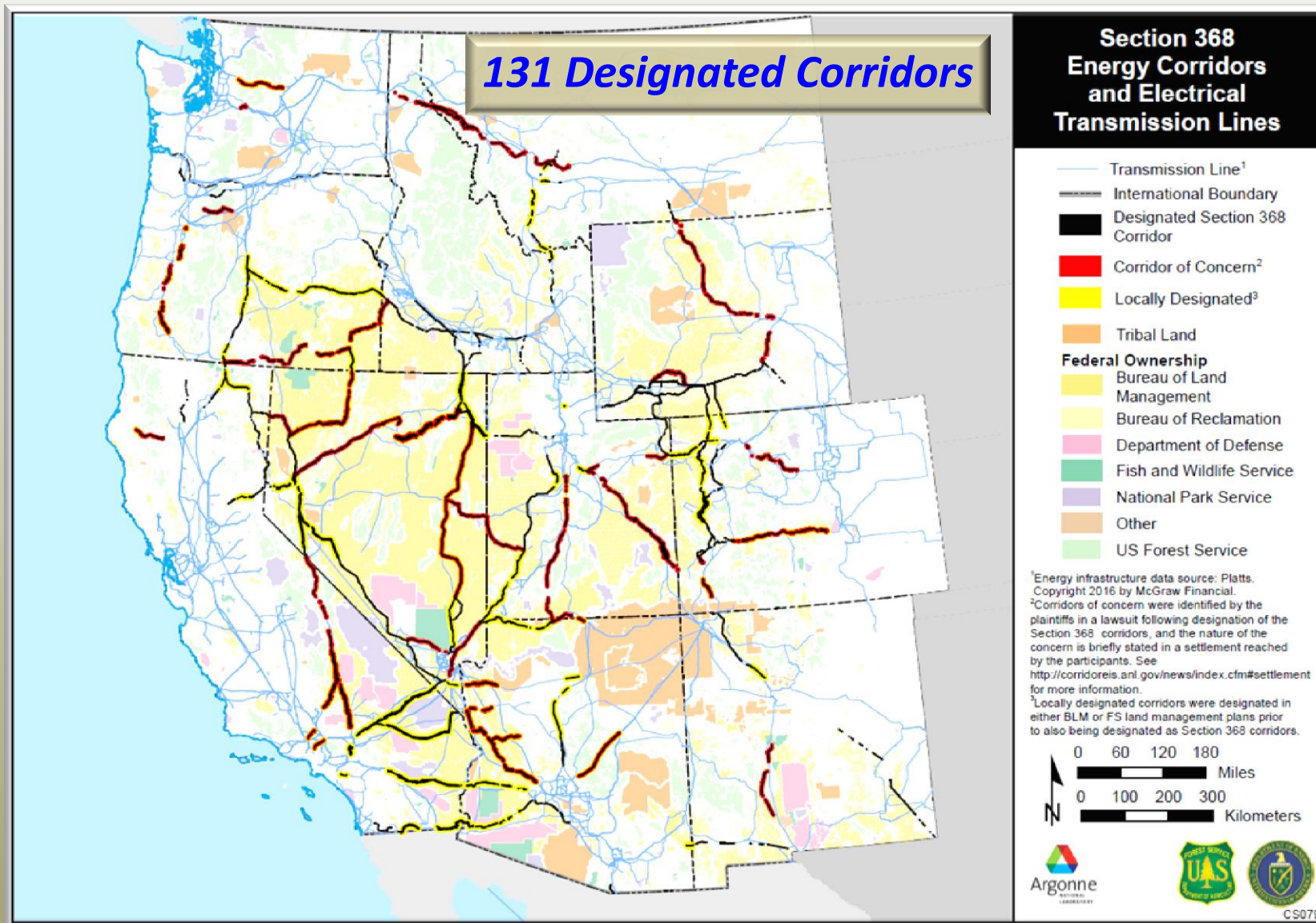


## **Background: 2012 Settlement Agreement Requirements**

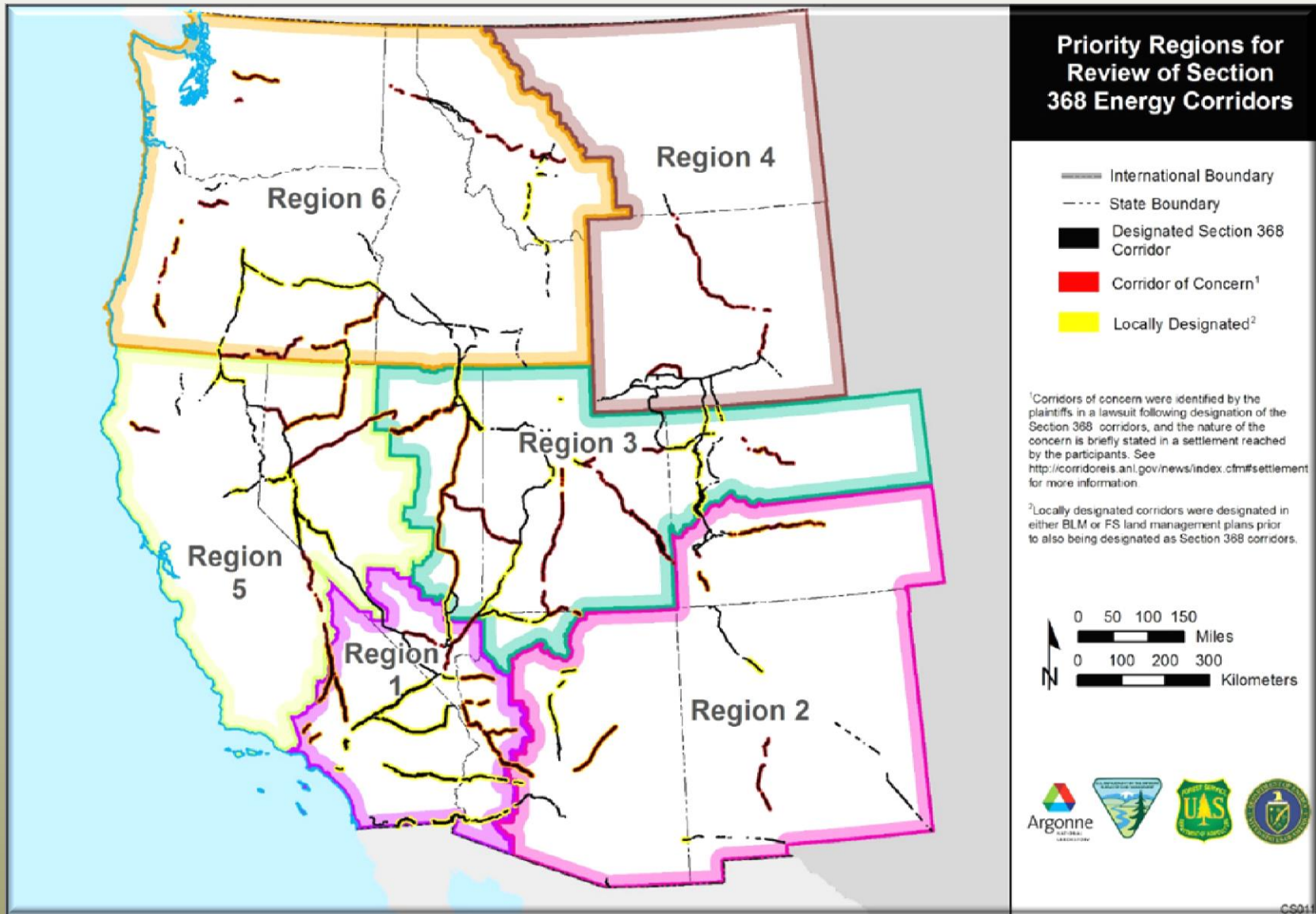
- ✓ **Established Interagency Workgroup (BLM, USFS, DOE)**
- ☐ **Remaining Settlement Requirements:**
  - ✓ **Release of Corridor Study by Argonne National Lab (May 2016)**
  - ✓ **Initiation of Periodic Regional Reviews of the Corridors**



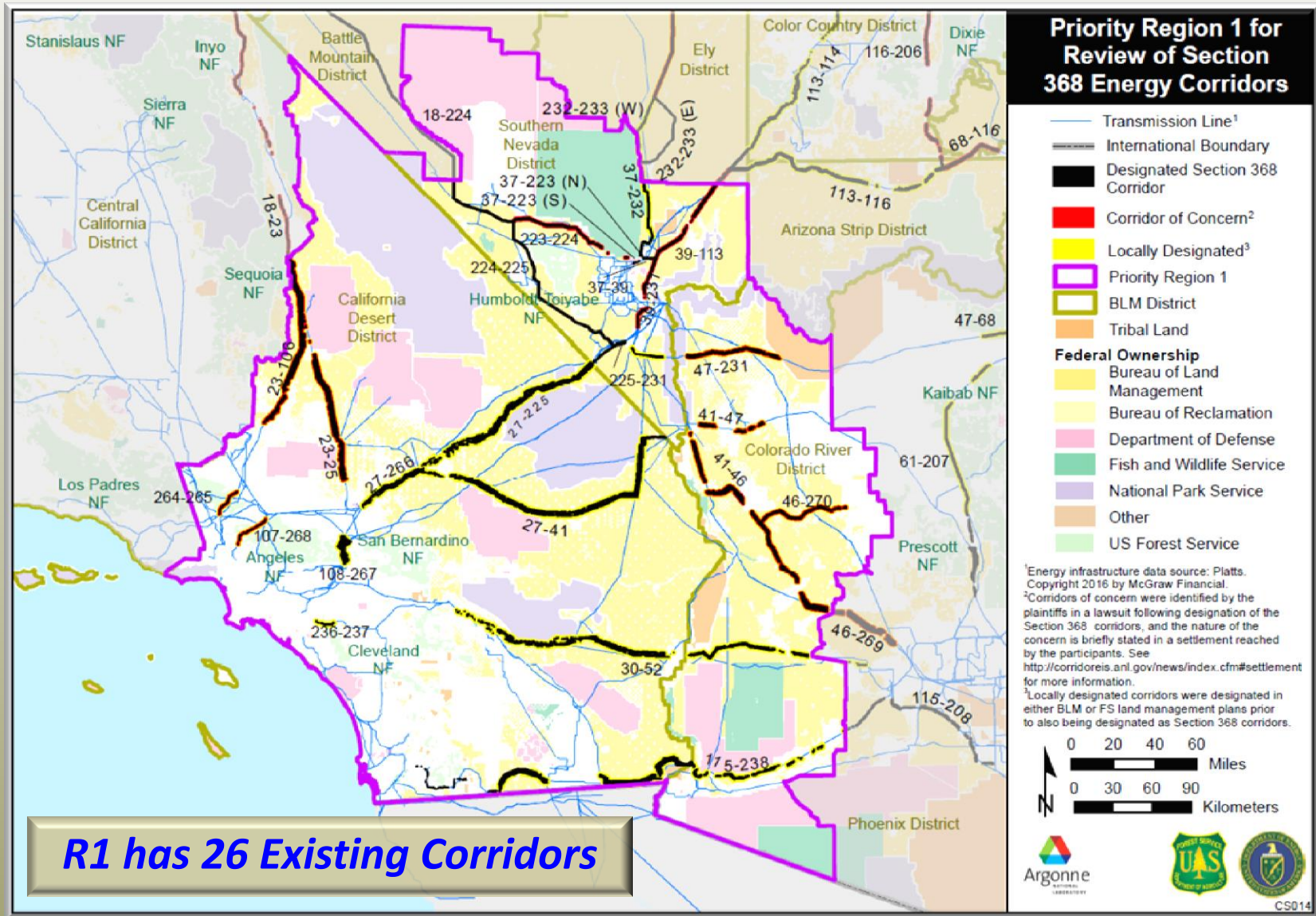
# Background: Section 368 Energy Corridors



# The Six Regional Reviews to be Conducted

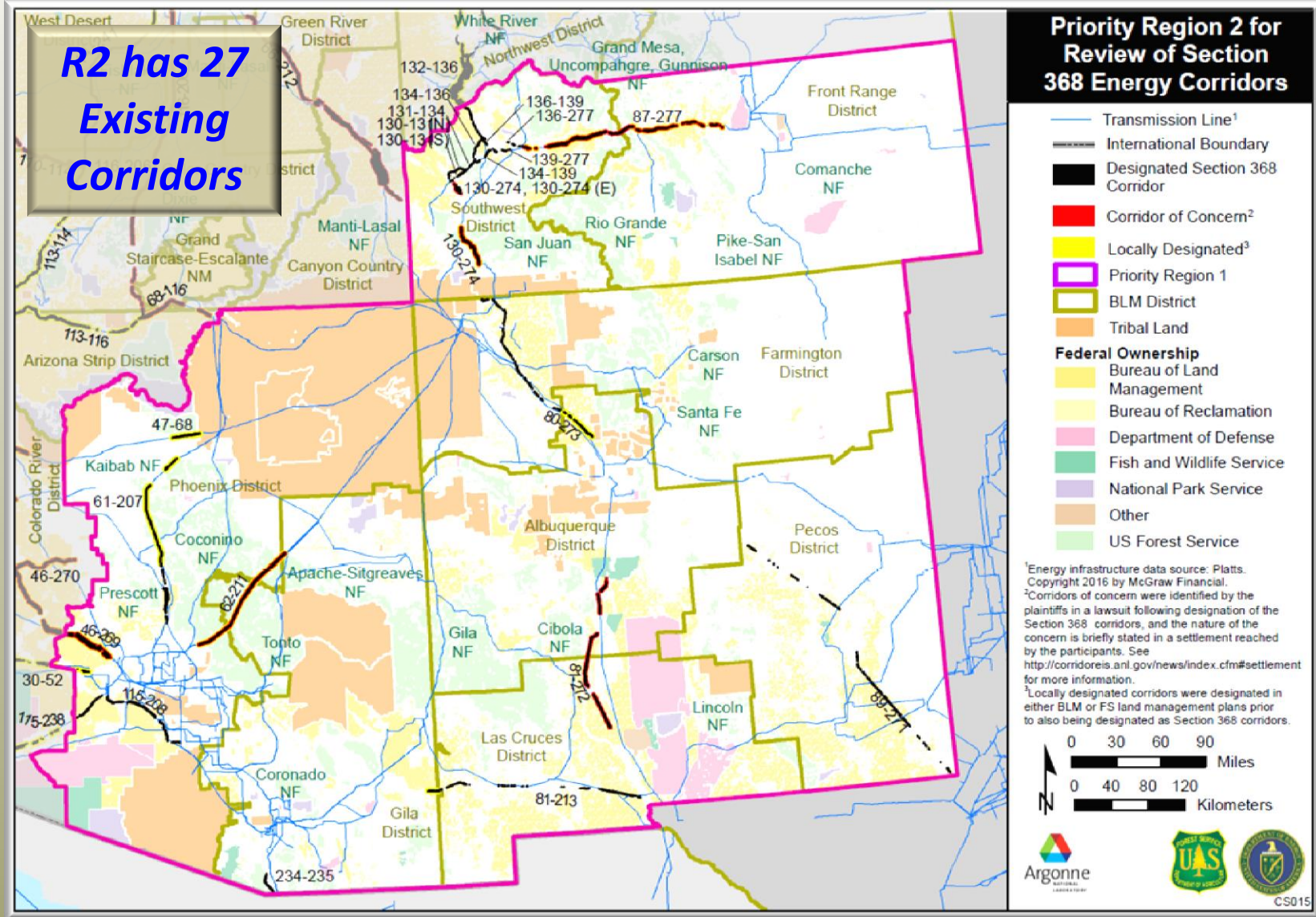


# Six Regional Reviews to be Conducted – *Region 1 Corridors*

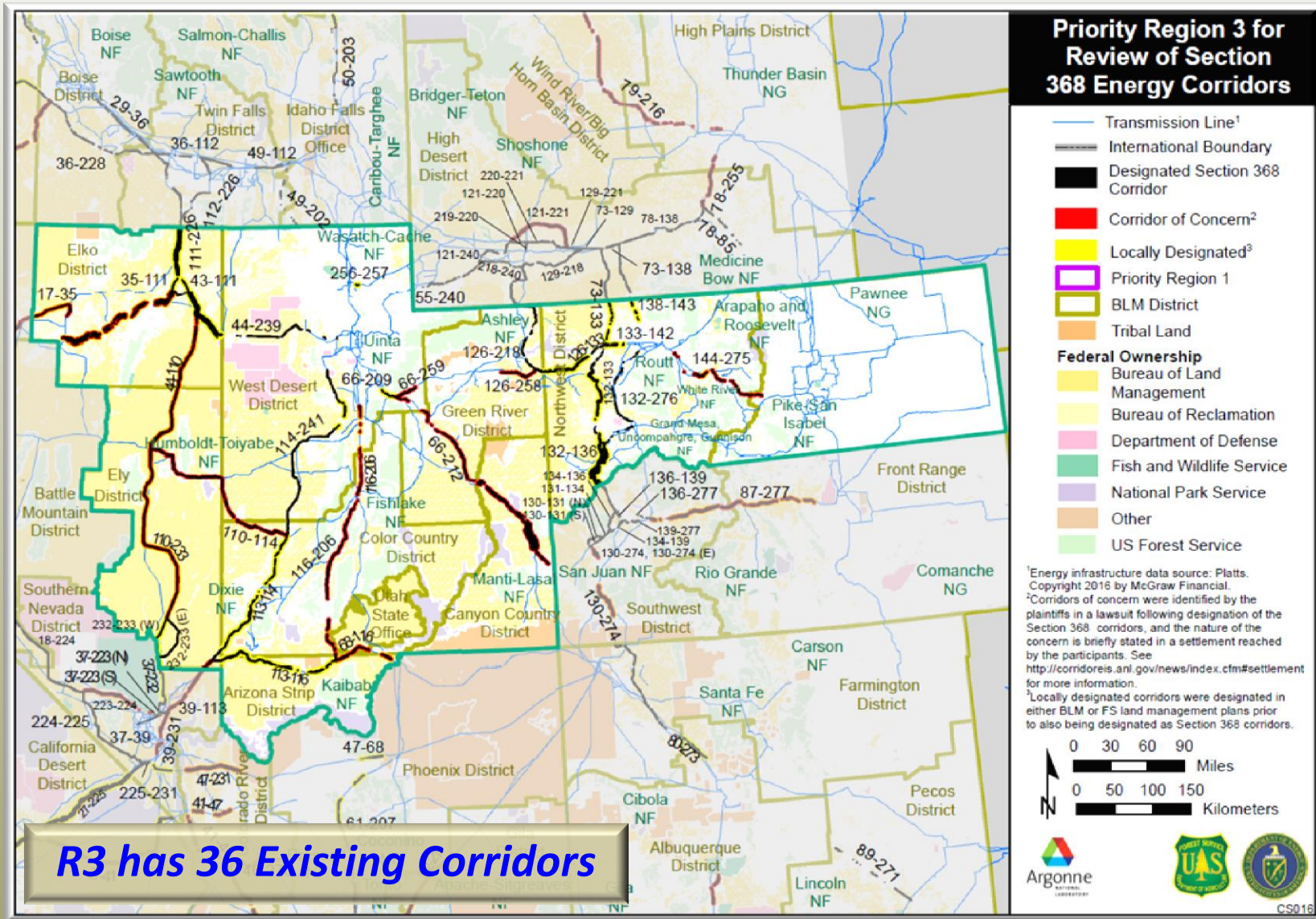




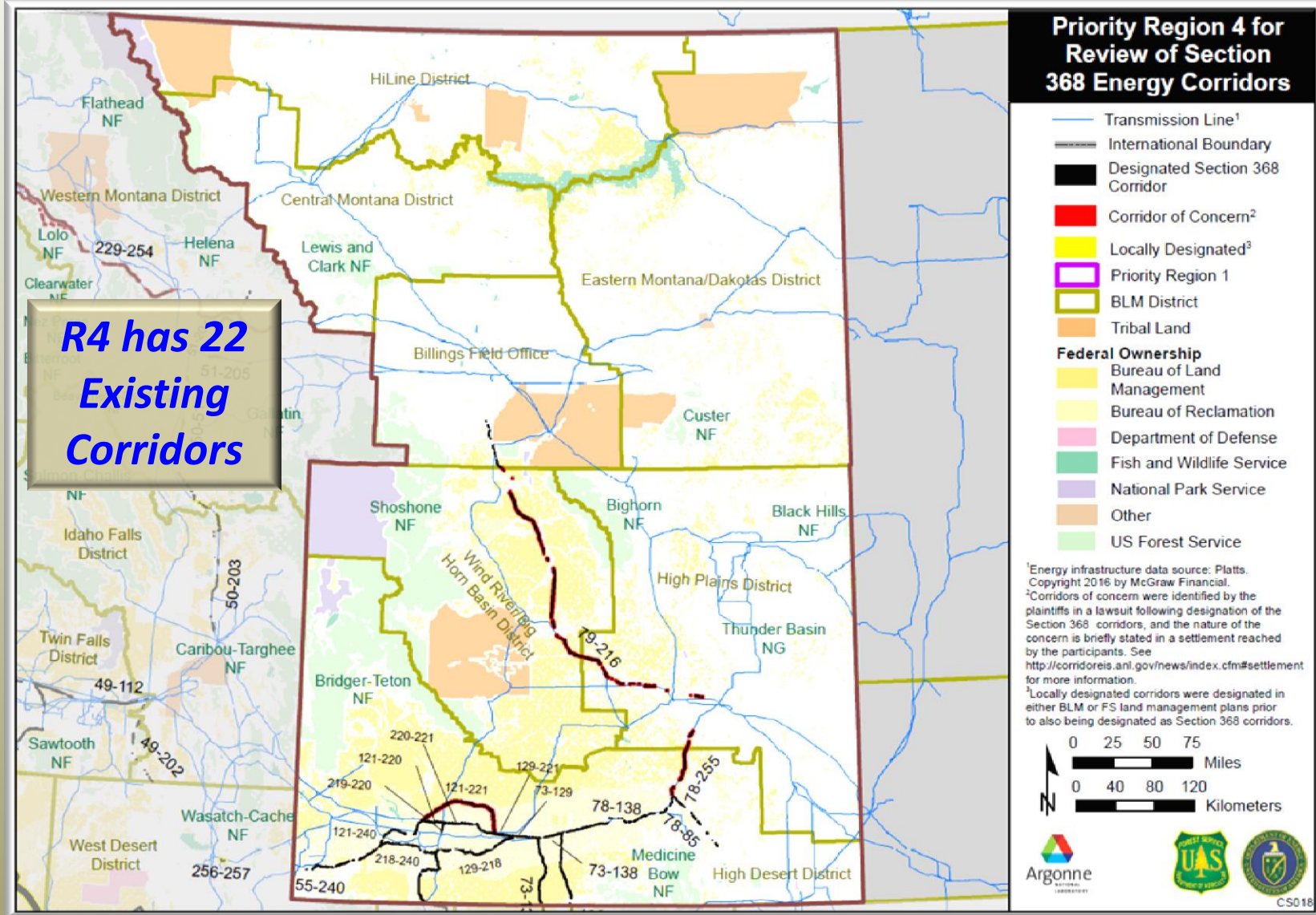
# Six Regional Reviews to be Conducted – Region 2 Corridors



# Six Regional Reviews to be Conducted – Region 3 Corridors

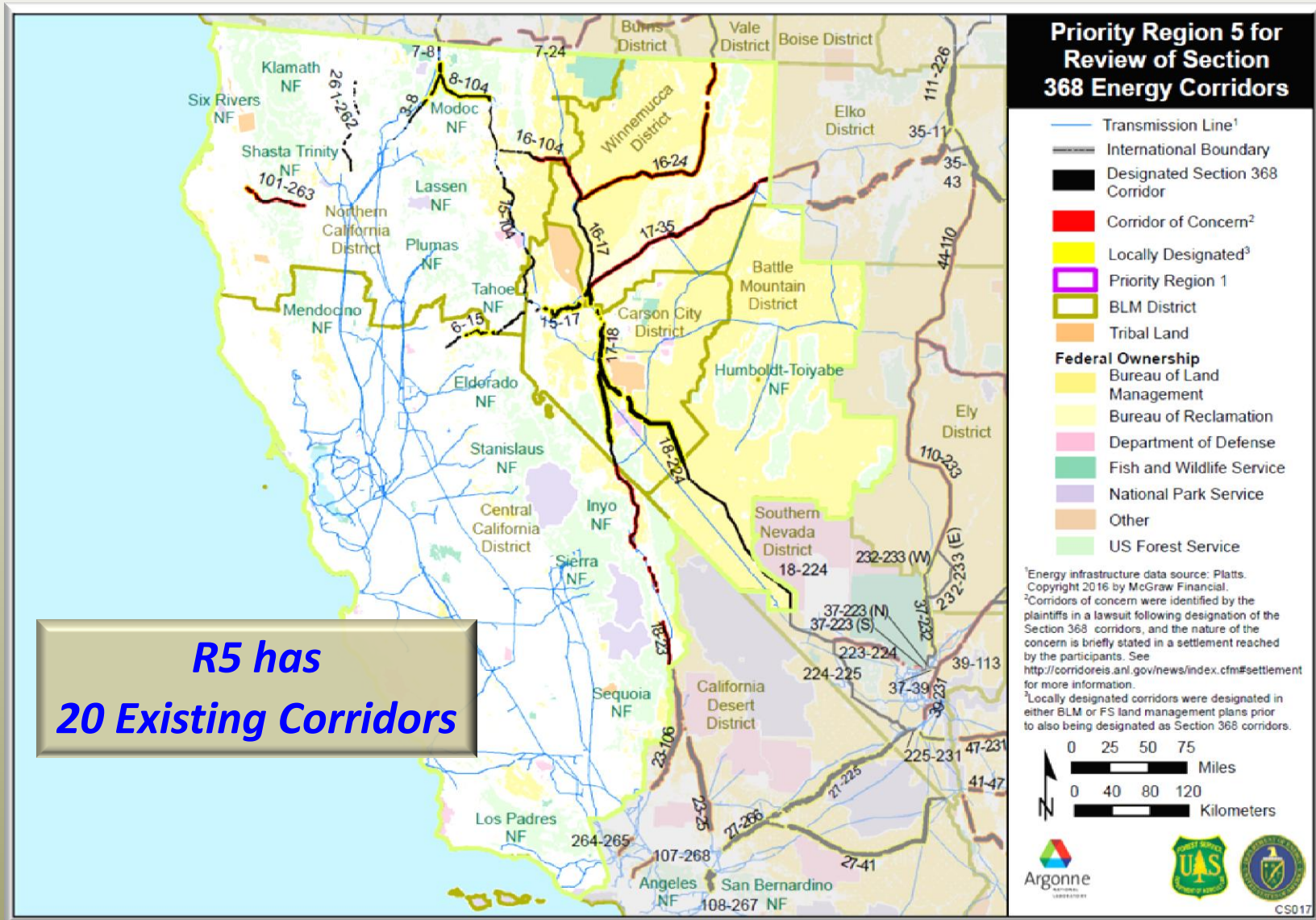


# Six Regional Reviews to be Conducted – Region 4 Corridors



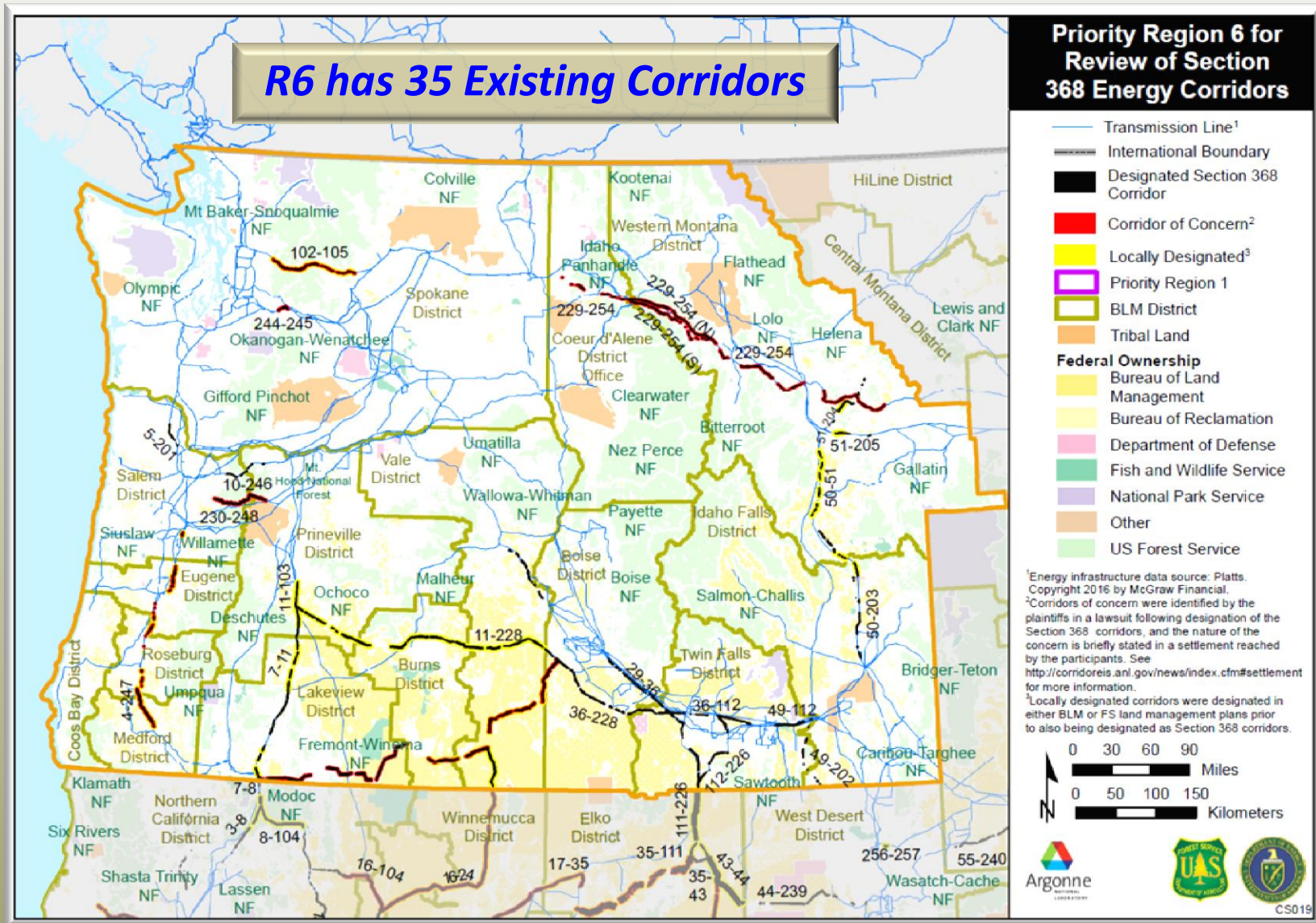
**R4 has 22 Existing Corridors**

# Six Regional Reviews to be Conducted – Region 5 Corridors



**R5 has  
20 Existing Corridors**

# Six Regional Reviews to be Conducted – Region 6 Corridors



# Three+ Year Schedule: For Phased Reviews of Regions 1 - 6

No	Regional Review	Start	Finish	2016				2017				2018				2019			
				Q1	Q2	Q3	Q4	Q1	Q2	Q3	Q4	Q1	Q2	Q3	Q4	Q1	Q2	Q3	Q4
1	S. CA, S. NV, W. AZ	May 2016	February 2017	■															
2	E. AZ, NM, S. CO	January 2017	September 2017					■											
3	N. CO, UT, E. NV, NW. AZ	August 2017	March 2017									■							
4	WY, E. MT	February 2018	October 2018									■							
5	N. CA, W. NV	September 2018	April 2019													■			
6	W. MT, ID, OR, WA	March 2019	November 2019													■			



# Three+ Year Schedule: For Phased Reviews of Regions 1 - 6

No	Regional Review	Start	Finish	2016				2017				2018				2019			
				Q1	Q2	Q3	Q4	Q1	Q2	Q3	Q4	Q1	Q2	Q3	Q4	Q1	Q2	Q3	Q4
1	S. CA, S. NV, W. AZ	May 2016	February 2017	█				█				█				█			
2	E. AZ, NM, S. CO	January 2017	September 2017	█				█				█				█			
3	N. CO, UT, E. NV, NW. AZ	August 2017	March 2018	█				█				█				█			
4	WY, E. MT	February 2018	October 2018	█				█				█				█			
5	N. CA, W. NV	September 2018	April 2019	█				█				█				█			
6	W. MT, ID, OR, WA	March 2019	November 2019	█				█				█				█			

2.5 Month Adjustment

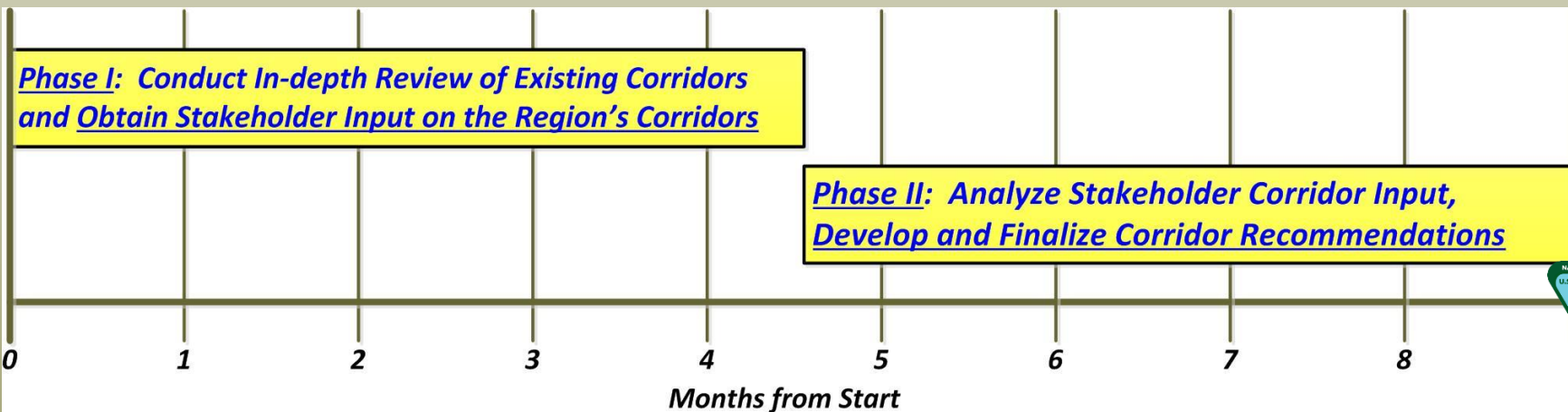


## Three+ Year Schedule: For Phased Reviews of Regions 1 - 6

No	Regional Review	Start	Finish	2016				2017				2018				2019			
				Q1	Q2	Q3	Q4	Q1	Q2	Q3	Q4	Q1	Q2	Q3	Q4	Q1	Q2	Q3	Q4
1	S. CA, S. NV, W. AZ	May 2016	February 2017	█				█											
2	E. AZ, NM, S. CO	January 2017	September 2017					█											
3	N. CO, UT, E. NV, NW. AZ	August 2017	March 2018									█							
4	WY, E. MT	February 2018	October 2018									█							
5	N. CA, W. NV	September 2018	April 2019													█			
6	W. MT, ID, OR, WA	March 2019	November 2019													█			

2.5 Month Adjustment

## Overview of a Regional Review: The Two Public Input Phases





## Our End Product: Land Use Plan Recommendations

- ✓ *Provide Recommendations to Add, Alter or Delete Corridors to be Carried out through Subsequent Land Use Planning Actions*
  - ❖ *Reviews are not NEPA-based. NEPA occurs during LUP Action*
  - ❖ *Identify Corridor Choke Points, Conflict Areas and New Corridors*
- ✓ *Stakeholder Input will result in Potential LUP Amendments*
- ✓ *Recognize Corridor Influence from Ongoing LUP Actions*
- ✓ *Authorized or Pending Major Transmission / Pipeline Project Applications Provide Further Insight on Corridor Adjustments*
- ❖ *Reviews Provide Geospatial-based Corridor Siting Information Intended to Best Meet Future BLM and USFS Planning Needs*



# Tools to Facilitate Stakeholder Understanding & Critical Input

## ✓ Developing Corridor Abstracts to Document Known Concerns

### Corridor 30-52

*Palo Verde - Palm Springs*

#### Introduction

Corridor 30-52 extends west-east along Interstate 10 (I-10) from Palm Springs in southern California to the Palo Verde Nuclear Generating Station and the western suburbs of Phoenix in central Arizona. Federally-designated portions of this corridor are entirely on BLM-administered land, with a 10,560-ft width over most of its extent in California, and 5,280 ft-width in Arizona. It is designated as a multi-modal corridor that can accommodate both electrical transmission and pipeline projects. The corridor spans a 199.7-mile distance, with 97.7 designated centerline miles. The designated area is 949,793 acres/148.4 square miles. This corridor is in Riverside County in California, and La Paz and Maricopa Counties in Arizona. BLM jurisdictions include the California Desert District in California and the Lake Havasu, Lower Sonoran, Hassayampa, and Yuma Field Offices in Arizona. This corridor is primarily in Priority Region 1, but extends into Priority Region 2 between mileposts (MP) 174.0 and 199.7.

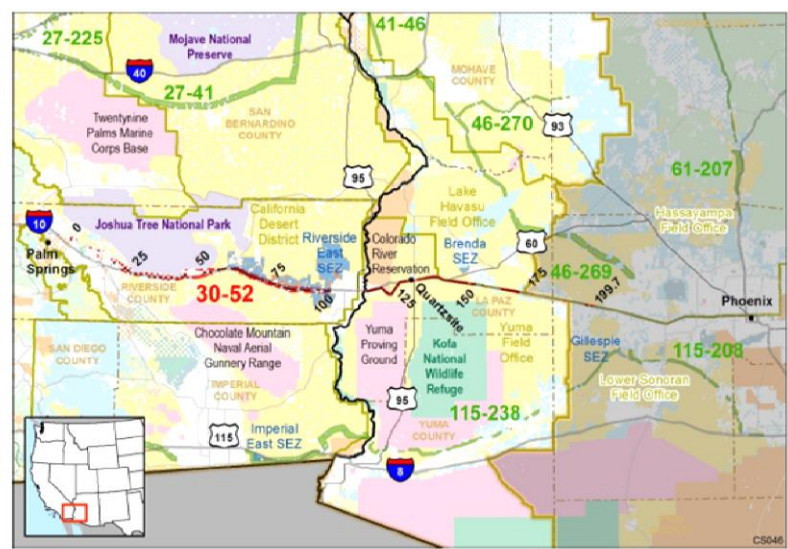


Figure 1. Corridor 30-52 (Key for Figures 1-3 can be found on the last page of the abstract)



# Tools to Facilitate Stakeholder Understanding & Critical Input

## ✓ *Developing Corridor Abstracts to Document Known Concerns*

Co  
Palo  
Intr  
Corri  
weste  
most  
pipeli  
corrid  
the La  
betwe

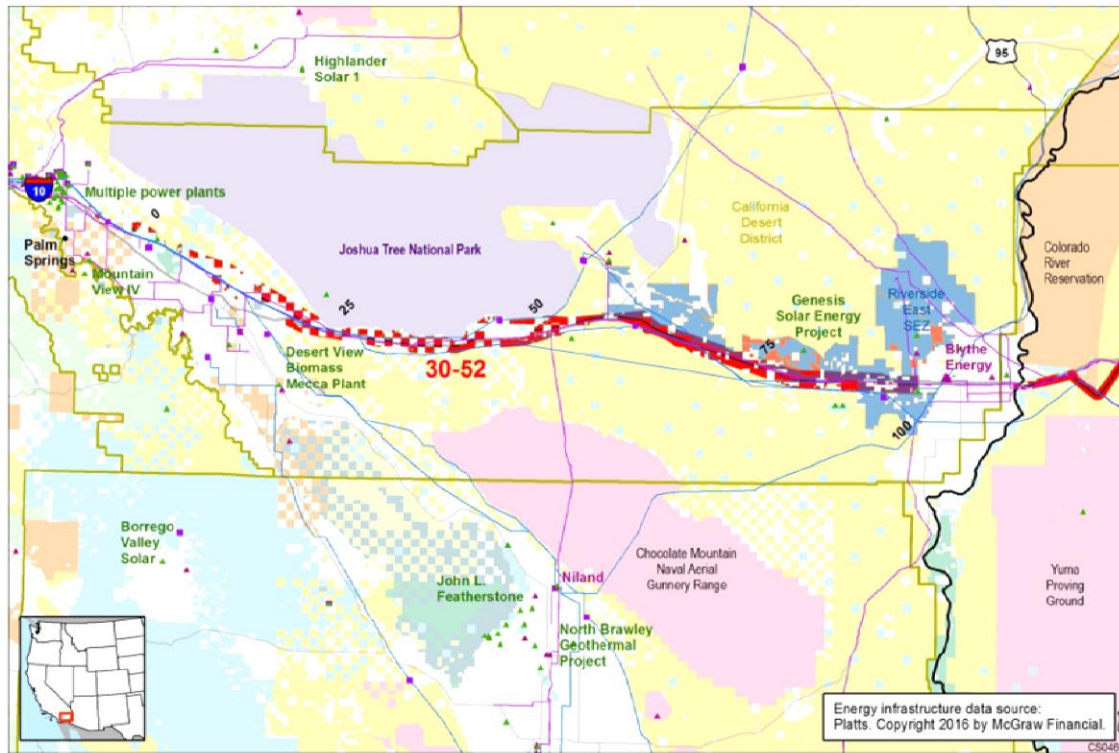


Figure 2. West portion of Corridor 30-52, including existing energy infrastructure




# Tools to Facilitate Stakeholder Understanding & Critical Input

## ✓ *Developing Corridor Abstracts to Document Known Concerns*

Co  
Palo

Intr  
Corri  
weste  
most  
pipeli  
corri  
the La  
betwe



Figure

### Corridor Rationale

During scoping for the WWEC PEIS, routes generally following this route were suggested by the American Wind Energy Association; New Mexico Energy, Minerals, and Natural Resources Department; and the Western Utility Group. Current infrastructure occupying parts of the corridor includes I-10, transmission lines operated by the Metropolitan Water District (230 kV), and the Southern California Edison Company (115 to 500 kV); and natural gas pipelines operated by El Paso, and Southern California Gas Company. Southern California Edison Company recently completed a 500-kV project within parts of the corridor in California between the Devers and Colorado River substations.

Within the California Desert District, the BLM Palm Springs-South Coast Field Office has received 24 ROW applications using Corridor 30-52 since publication of the PEIS. Two of the applications were entirely in the corridor, while the others were partly within it.

Several new applications were filed for energy storage or production within the corridor and adjacent to substations that are between 5 and 25 Megawatts. Given that many of the utility companies are on target or exceeding their target for providing a percentage of the energy portfolio with renewable energy, not many new, large power purchase agreements are being issued. However, the utility companies are going out with smaller PPAs, which have modified the types of projects being proposed on public lands.

Five major transmission lines and several major natural gas pipelines run through the corridor. Many of the energy production projects along the I-10 and Riverside East Solar Energy Zone have generation-tie lines that use the corridors, which create congestion near the major substations (Red Bluff and Colorado River). This congestion is compounded by the Mecca Hills and Orcopia Wilderness and Joshua Tree National Park reducing the size of and potential for increasing the size of the corridor.

### Corridor of Concern Status

This corridor was not identified in the Settlement Agreement as a Corridor of Concern.

### Corridor Analysis

<ul style="list-style-type: none"> <li><input checked="" type="checkbox"/> <b>Energy Planning Opportunities</b> <ul style="list-style-type: none"> <li><input checked="" type="checkbox"/> Appropriate and acceptable uses</li> <li><input checked="" type="checkbox"/> WWEC Purpose (e.g., renewable energy)</li> <li><input type="checkbox"/> Transmission and pipeline capacity opportunity</li> </ul> </li> <li><input checked="" type="checkbox"/> <b>Energy Planning Concerns</b> <ul style="list-style-type: none"> <li><input checked="" type="checkbox"/> Physical barrier</li> <li><input checked="" type="checkbox"/> Jurisdictional concern</li> <li><input checked="" type="checkbox"/> Corridor alignment and spacing</li> <li><input checked="" type="checkbox"/> Transmission and pipeline capacity concern</li> </ul> </li> </ul>	<ul style="list-style-type: none"> <li><input checked="" type="checkbox"/> <b>Land Management Responsibilities and Environmental Concerns</b> <ul style="list-style-type: none"> <li><input type="checkbox"/> Acoustics</li> <li><input checked="" type="checkbox"/> Air quality</li> <li><input type="checkbox"/> Climate change</li> <li><input type="checkbox"/> Cultural resources</li> <li><input checked="" type="checkbox"/> Ecological resources</li> <li><input type="checkbox"/> Environmental Justice</li> <li><input checked="" type="checkbox"/> Hydrological resources</li> <li><input checked="" type="checkbox"/> Lands and Realty</li> <li><input type="checkbox"/> Lands with wilderness characteristics</li> </ul> </li> </ul>	<ul style="list-style-type: none"> <li><input type="checkbox"/> Livestock Grazing</li> <li><input type="checkbox"/> Paleontology</li> <li><input checked="" type="checkbox"/> Public Access and Recreation</li> <li><input type="checkbox"/> Socioeconomics</li> <li><input type="checkbox"/> Soils/erosion</li> <li><input checked="" type="checkbox"/> Specially designated areas</li> <li><input checked="" type="checkbox"/> Tribal concerns</li> <li><input checked="" type="checkbox"/> Visual resources</li> <li><input type="checkbox"/> Wild horses and burros</li> <li><input checked="" type="checkbox"/> <b>Interagency Operating Procedures</b></li> </ul>
--	---	---



# Tools to Facilitate Stakeholder Understanding & Critical Input

## ✓ Developing Corridor Abstracts to Document Known Concerns

Co  
Palo

Intr

Corri

weste


most

pipeli

corrid

the La

betwe



Figure

Corri

During

Miner

lines o

El Paso

betwe

Within

the PE

Severa

Given

many

of proj

Five m

Riversi

River).

increa

Corri

This co

Corri

ID	Agency	Agency Jurisdiction	County	Primary Concern/Opportunity	Length of Affected Corridor (by Milepost[MP])	Source/Context	BLM/FS Review and Analysis
<b>ENERGY PLANNING OPPORTUNITIES</b>							
<i>Appropriate and Acceptable Uses</i>							
30-52 .001	BLM	California Desert District, CA	Riverside, CA	The Riverside East Solar Energy Zone (SEZ) overlaps the corridor	MP 60.1 to 99.8	GIS Analysis	Opportunity
<i>WWEC Purpose</i>							
30-52 .002	BLM	California Desert District, CA	Riverside, CA	Nearest transmission corridor for facilitating development in the Riverside East SEZ in California	MP 60.1 to 99.8	GIS Analysis	Opportunity - Most of the projects are aligned along I-10 including two major substations.
30-52 .003	BLM	Yuma FO, AZ	Yuma, AZ	Nearest transmission corridor for facilitating development in the Brenda SEZ in Arizona	2.7 miles from SEZ between MP 150.2 and 154.3	GIS Analysis	Opportunity
<b>ENERGY PLANNING CONCERNS</b>							
<i>Location-Specific Physical Barrier</i>							
30-52 .004	BLM	California Desert District, CA	Riverside, CA	There is a bottleneck around the San Gorgonio Pass where it has been challenging in the past to site additional transmission.	San Gorgonio Pass is west of the corridor and the corridor was not designated in the pass	RFI/This corridor should be developed only if a technological solution is found to placing additional transmission infrastructure through the San Gorgonio Pass. Routing transmission anywhere else in the area would significantly impact the existing natural and biological resources;  GIS Analysis/Confirms bottleneck	Yes, this is a constraint. The San Gorgonio Pass area is constrained for additional development. There are two national monuments on either side of the interstate, so there is not much room to site a transmission line elsewhere through the pass. Future planning efforts would have to consider major re-routing alternatives for analysis to make this end-portion of the corridor viable for transmission of energy further west.
30-52 .005	BLM	California Desert District, CA	Riverside, CA	Transmission infrastructure	MP 0.0 to 99.8	RFI/Large amount of existing transmission infrastructure.	Not a constraint. There is room for additional projects. However, recommend future land use plans present analysis of alternatives to allow future growth (widening)



# Tools to Facilitate Stakeholder Understanding & Critical Input

## ✓ Developing Corridor Abstracts to Document Known Concerns

**Corridor Abstracts will be used to:**

- **Ensure Stakeholder Understanding of Known Corridor Concerns / Opportunities**
- **Focus Stakeholder Corridor Input to Specific Mileposts or Line Segments**
- **Document Our Analysis with the Geospatial Data for Final Corridor Recommendations**

ID	Agency	Agency Jurisdiction	County	Primary	Corridor (by	Analysis
<b>ENERGY PLANNING OPPORTUNITIES</b>						
<i>Appropriate and Acceptable Uses</i>						
30-52 .001	BLM	California Desert District, CA	Riverside, CA	Transmission infrastructure overlaps the corridor		
<b>WWEC Purpose</b>						
30-52 .002	BLM	California Desert District, CA	Riverside, CA	Transmission infrastructure overlaps the corridor		
30-52 .003	BLM	Yuma FO, AZ	Yuma, AZ	Transmission infrastructure overlaps the corridor		
<b>ENERGY PLANNING CONCERNS</b>						
<i>Location-Specific Physical Barrier</i>						
30-52 .004	BLM	California Desert District, CA	Riverside, CA	There is a bottleneck around the San Gorgonio Pass where it has been challenging in the past to site additional transmission.	San Gorgonio Pass is west of the corridor and the corridor was not designated in the pass	RFI/This corridor should be developed only if a technological solution is found to placing additional transmission infrastructure through the San Gorgonio Pass. Routing transmission anywhere else in the area would significantly impact the existing natural and biological resources;  GIS Analysis/Confirms bottleneck
30-52 .005	BLM	California Desert District, CA	Riverside, CA	Transmission infrastructure	MP 0.0 to 99.8	Not a constraint. There is room for additional projects. However, recommend future land use plans present analysis of alternatives to allow future growth (widening)



# Tools to Facilitate Stakeholder Understanding & Critical Input

## ✓ *Standing-up a Sec. 368 Energy Corridor Internet Mapper Tool*

**Section 368 Energy Corridor Mapping Tool**

Disclaimer  
Privacy/Security

Reports Print View Abstract

Max Zoom Back Forward Pan Mode Zoom Box Zoom In Zoom Out Info Measure Bookmarks

Find a place...

Search for layers by name

**By Group**

- Boundary
- BLM Development Areas
- Cultural Resource Areas
- Ecological Resource Areas
- Energy Corridor
- Hydrography
- Land Management Information
- Potential Incompatible Land Uses
- Specially Designated Areas
- Visual Resource Areas

**Layers**

Overlays

- Priority Region
- Sec. 368 Corridor Milepost
- Sec. 368 Corridor Label
- Sec. 368 Designated Corridor Centerline
- Sec. 368 Designated Corridor
- Surface Management Agency Jurisdiction

Bureau of Land Management  
Bureau of Reclamation  
Department of Defense  
Department of Energy  
Local

BLM Priority Region 1  
BLM Priority Region 2  
Corridor 107-268  
Corridor 108-267  
Corridor 110-114  
Corridor 110-233  
Corridor 11-103  
Corridor 111-226  
Corridor 11-228  
Corridor 113-114  
Corridor 113-116  
Corridor 114-241  
Corridor 115-208  
Corridor 115-238  
Corridor 223-224  
Corridor 224-225  
Corridor 225-231  
Corridor 229-254  
Corridor 229-254 (N)  
Corridor 229-254 (S)  
Corridor 230-248

Region 1  
Fort Irwin  
Bartow  
Victorville  
Twentynine Palms  
San Bernardino National Forest  
Marine Corps Agoc. Twentynine Palms  
Highland  
Redlands  
Yucaipa  
Riverside

22-266  
22-267  
22-268  
22-269  
22-270  
22-271  
22-272  
22-273  
22-274  
22-275  
22-276  
22-277  
22-278  
22-279  
22-280  
22-281  
22-282  
22-283  
22-284  
22-285  
22-286  
22-287  
22-288  
22-289  
22-290  
22-291  
22-292  
22-293  
22-294  
22-295  
22-296  
22-297  
22-298  
22-299  
22-300  
22-301  
22-302  
22-303  
22-304  
22-305  
22-306  
22-307  
22-308  
22-309  
22-310  
22-311  
22-312  
22-313  
22-314  
22-315  
22-316  
22-317  
22-318  
22-319  
22-320  
22-321  
22-322  
22-323  
22-324  
22-325  
22-326  
22-327  
22-328  
22-329  
22-330  
22-331  
22-332  
22-333  
22-334  
22-335  
22-336  
22-337  
22-338  
22-339  
22-340  
22-341  
22-342  
22-343  
22-344  
22-345  
22-346  
22-347  
22-348  
22-349  
22-350  
22-351  
22-352  
22-353  
22-354  
22-355  
22-356  
22-357  
22-358  
22-359  
22-360  
22-361  
22-362  
22-363  
22-364  
22-365  
22-366  
22-367  
22-368  
22-369  
22-370  
22-371  
22-372  
22-373  
22-374  
22-375  
22-376  
22-377  
22-378  
22-379  
22-380  
22-381  
22-382  
22-383  
22-384  
22-385  
22-386  
22-387  
22-388  
22-389  
22-390  
22-391  
22-392  
22-393  
22-394  
22-395  
22-396  
22-397  
22-398  
22-399  
22-400  
22-401  
22-402  
22-403  
22-404  
22-405  
22-406  
22-407  
22-408  
22-409  
22-410  
22-411  
22-412  
22-413  
22-414  
22-415  
22-416  
22-417  
22-418  
22-419  
22-420  
22-421  
22-422  
22-423  
22-424  
22-425  
22-426  
22-427  
22-428  
22-429  
22-430  
22-431  
22-432  
22-433  
22-434  
22-435  
22-436  
22-437  
22-438  
22-439  
22-440  
22-441  
22-442  
22-443  
22-444  
22-445  
22-446  
22-447  
22-448  
22-449  
22-450  
22-451  
22-452  
22-453  
22-454  
22-455  
22-456  
22-457  
22-458  
22-459  
22-460  
22-461  
22-462  
22-463  
22-464  
22-465  
22-466  
22-467  
22-468  
22-469  
22-470  
22-471  
22-472  
22-473  
22-474  
22-475  
22-476  
22-477  
22-478  
22-479  
22-480  
22-481  
22-482  
22-483  
22-484  
22-485  
22-486  
22-487  
22-488  
22-489  
22-490  
22-491  
22-492  
22-493  
22-494  
22-495  
22-496  
22-497  
22-498  
22-499  
22-500  
22-501  
22-502  
22-503  
22-504  
22-505  
22-506  
22-507  
22-508  
22-509  
22-510  
22-511  
22-512  
22-513  
22-514  
22-515  
22-516  
22-517  
22-518  
22-519  
22-520  
22-521  
22-522  
22-523  
22-524  
22-525  
22-526  
22-527  
22-528  
22-529  
22-530  
22-531  
22-532  
22-533  
22-534  
22-535  
22-536  
22-537  
22-538  
22-539  
22-540  
22-541  
22-542  
22-543  
22-544  
22-545  
22-546  
22-547  
22-548  
22-549  
22-550  
22-551  
22-552  
22-553  
22-554  
22-555  
22-556  
22-557  
22-558  
22-559  
22-560  
22-561  
22-562  
22-563  
22-564  
22-565  
22-566  
22-567  
22-568  
22-569  
22-570  
22-571  
22-572  
22-573  
22-574  
22-575  
22-576  
22-577  
22-578  
22-579  
22-580  
22-581  
22-582  
22-583  
22-584  
22-585  
22-586  
22-587  
22-588  
22-589  
22-590  
22-591  
22-592  
22-593  
22-594  
22-595  
22-596  
22-597  
22-598  
22-599  
22-600  
22-601  
22-602  
22-603  
22-604  
22-605  
22-606  
22-607  
22-608  
22-609  
22-610  
22-611  
22-612  
22-613  
22-614  
22-615  
22-616  
22-617  
22-618  
22-619  
22-620  
22-621  
22-622  
22-623  
22-624  
22-625  
22-626  
22-627  
22-628  
22-629  
22-630  
22-631  
22-632  
22-633  
22-634  
22-635  
22-636  
22-637  
22-638  
22-639  
22-640  
22-641  
22-642  
22-643  
22-644  
22-645  
22-646  
22-647  
22-648  
22-649  
22-650  
22-651  
22-652  
22-653  
22-654  
22-655  
22-656  
22-657  
22-658  
22-659  
22-660  
22-661  
22-662  
22-663  
22-664  
22-665  
22-666  
22-667  
22-668  
22-669  
22-670  
22-671  
22-672  
22-673  
22-674  
22-675  
22-676  
22-677  
22-678  
22-679  
22-680  
22-681  
22-682  
22-683  
22-684  
22-685  
22-686  
22-687  
22-688  
22-689  
22-690  
22-691  
22-692  
22-693  
22-694  
22-695  
22-696  
22-697  
22-698  
22-699  
22-700  
22-701  
22-702  
22-703  
22-704  
22-705  
22-706  
22-707  
22-708  
22-709  
22-710  
22-711  
22-712  
22-713  
22-714  
22-715  
22-716  
22-717  
22-718  
22-719  
22-720  
22-721  
22-722  
22-723  
22-724  
22-725  
22-726  
22-727  
22-728  
22-729  
22-730  
22-731  
22-732  
22-733  
22-734  
22-735  
22-736  
22-737  
22-738  
22-739  
22-740  
22-741  
22-742  
22-743  
22-744  
22-745  
22-746  
22-747  
22-748  
22-749  
22-750  
22-751  
22-752  
22-753  
22-754  
22-755  
22-756  
22-757  
22-758  
22-759  
22-760  
22-761  
22-762  
22-763  
22-764  
22-765  
22-766  
22-767  
22-768  
22-769  
22-770  
22-771  
22-772  
22-773  
22-774  
22-775  
22-776  
22-777  
22-778  
22-779  
22-780  
22-781  
22-782  
22-783  
22-784  
22-785  
22-786  
22-787  
22-788  
22-789  
22-790  
22-791  
22-792  
22-793  
22-794  
22-795  
22-796  
22-797  
22-798  
22-799  
22-800  
22-801  
22-802  
22-803  
22-804  
22-805  
22-806  
22-807  
22-808  
22-809  
22-810  
22-811  
22-812  
22-813  
22-814  
22-815  
22-816  
22-817  
22-818  
22-819  
22-820  
22-821  
22-822  
22-823  
22-824  
22-825  
22-826  
22-827  
22-828  
22-829  
22-830  
22-831  
22-832  
22-833  
22-834  
22-835  
22-836  
22-837  
22-838  
22-839  
22-840  
22-841  
22-842  
22-843  
22-844  
22-845  
22-846  
22-847  
22-848  
22-849  
22-850  
22-851  
22-852  
22-853  
22-854  
22-855  
22-856  
22-857  
22-858  
22-859  
22-860  
22-861  
22-862  
22-863  
22-864  
22-865  
22-866  
22-867  
22-868  
22-869  
22-870  
22-871  
22-872  
22-873  
22-874  
22-875  
22-876  
22-877  
22-878  
22-879  
22-880  
22-881  
22-882  
22-883  
22-884  
22-885  
22-886  
22-887  
22-888  
22-889  
22-890  
22-891  
22-892  
22-893  
22-894  
22-895  
22-896  
22-897  
22-898  
22-899  
22-900  
22-901  
22-902  
22-903  
22-904  
22-905  
22-906  
22-907  
22-908  
22-909  
22-910  
22-911  
22-912  
22-913  
22-914  
22-915  
22-916  
22-917  
22-918  
22-919  
22-920  
22-921  
22-922  
22-923  
22-924  
22-925  
22-926  
22-927  
22-928  
22-929  
22-930  
22-931  
22-932  
22-933  
22-934  
22-935  
22-936  
22-937  
22-938  
22-939  
22-940  
22-941  
22-942  
22-943  
22-944  
22-945  
22-946  
22-947  
22-948  
22-949  
22-950  
22-951  
22-952  
22-953  
22-954  
22-955  
22-956  
22-957  
22-958  
22-959  
22-960  
22-961  
22-962  
22-963  
22-964  
22-965  
22-966  
22-967  
22-968  
22-969  
22-970  
22-971  
22-972  
22-973  
22-974  
22-975  
22-976  
22-977  
22-978  
22-979  
22-980  
22-981  
22-982  
22-983  
22-984  
22-985  
22-986  
22-987  
22-988  
22-989  
22-990  
22-991  
22-992  
22-993  
22-994  
22-995  
22-996  
22-997  
22-998  
22-999  
23000



# Tools to Facilitate Stakeholder Understanding & Critical Input

## ✓ *Standing-up a Sec. 368 Energy Corridor Internet Mapper Tool*

**Section 368 Energy Corridor Mapping Tool**

Disclaimer  
Privacy/Security

Reports Print View Abstract

Max Zoom Back Forward Pan Mode Zoom Box Zoom In Zoom Out Info Measure Bookmarks

Find a place...

Search for layers by name

By Group

- Boundary
- BLM Development Areas
- Cultural Resource Areas
- Ecological Resource Areas
- Energy Corridor
- Hydrography
- Land Management Information
- Potential Incompatible Land Uses
- Specially Designated Areas
- Visual Resource Areas

Layers

Overlays

- Priority Region
- Sec. 368 Corridor Milepost
- Sec. 368 Corridor Label
- Sec. 368 Designated Corridor Centerline
- Sec. 368 Designated Corridor
- Surface Management Agency Jurisdiction

Bureau of Land Management  
Bureau of Reclamation  
Department of Defense  
Department of Energy  
Local

**Corridor Mapping Tool will be used to:**

- **Ensure Stakeholder Understanding of Known Corridor Concerns / Opportunities**
- **Facilitate Stakeholder Online Corridor Input to Specific Mileposts or Line Segments**
- **Leverage Our Developed Geospatial Data for the Final Corridor Recommendations**
- ❖ **Identify Corridor Adds, Edits or Deletes to Minimize Constraints and Maximize Opportunities**





# **BLM & USFS Desire for Robust Stakeholder Engagement**

## **❖ Region 1 Stakeholders Formally Notified:**

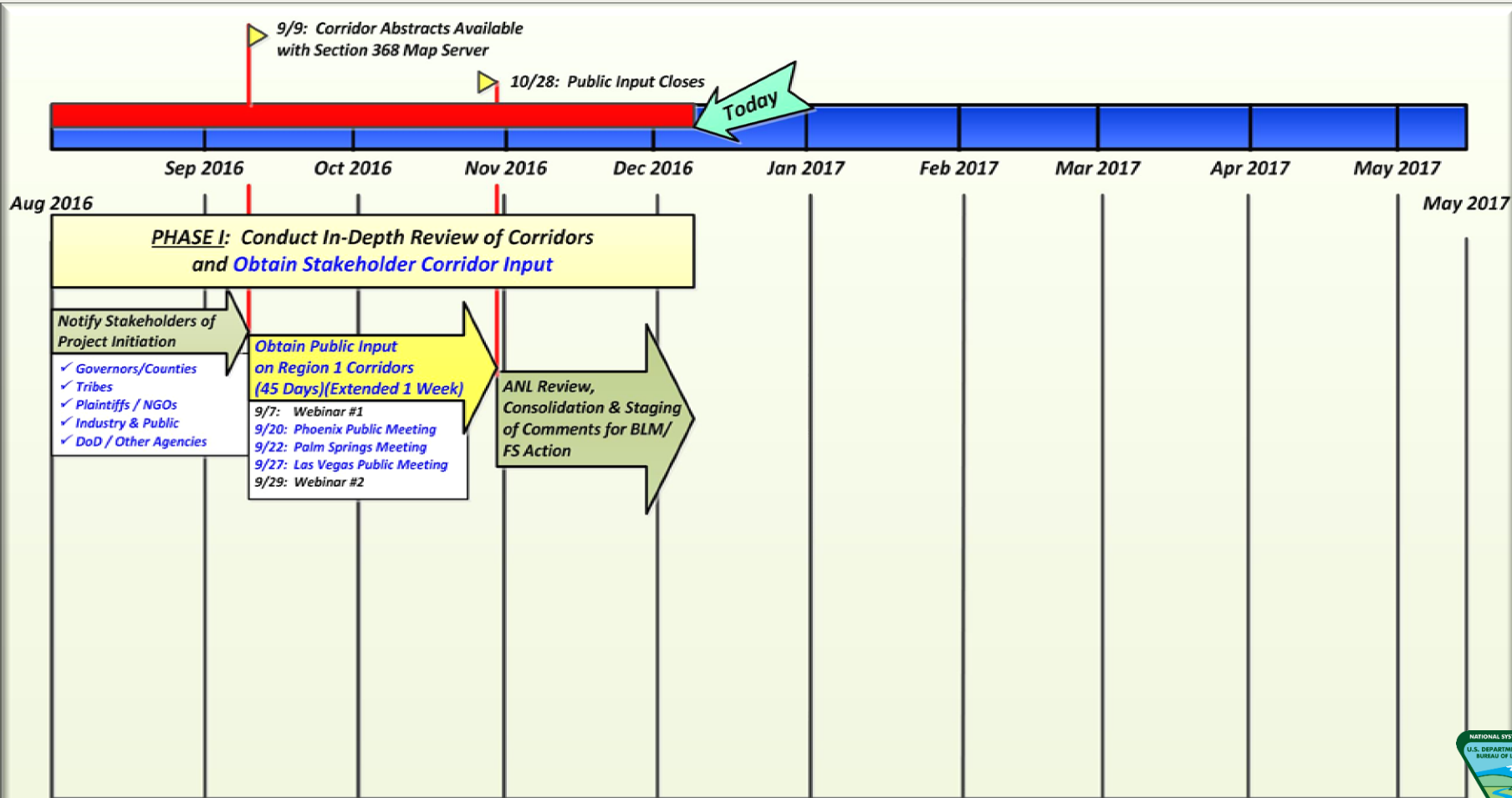
- ✓ **Governors of AZ, CA and NV – All West-wide Governors**
- ✓ **County Commissioners**
- ✓ **Tribes and BIA**

## **❖ Region 1 Stakeholders through Outreach Events**

- ✓ **Settlement Plaintiffs / NGOs**
- ✓ **BLM Resource Advisory Councils**
- ✓ **Department of Defense – Siting Clearinghouse**
- ✓ **Western Electrical Coordinating Council (WECC) [2024/2026 Study Program Special Assessment] and the California RETI 2.0 Project**
- ✓ **Industry: Utilities, Transmission / Pipeline Companies, Power Project Generators & Transmission Planning Entities**
- ✓ **Local Government**
- ✓ **The General Public**



# Region 1 Stakeholder Input Schedule: Phases I & II

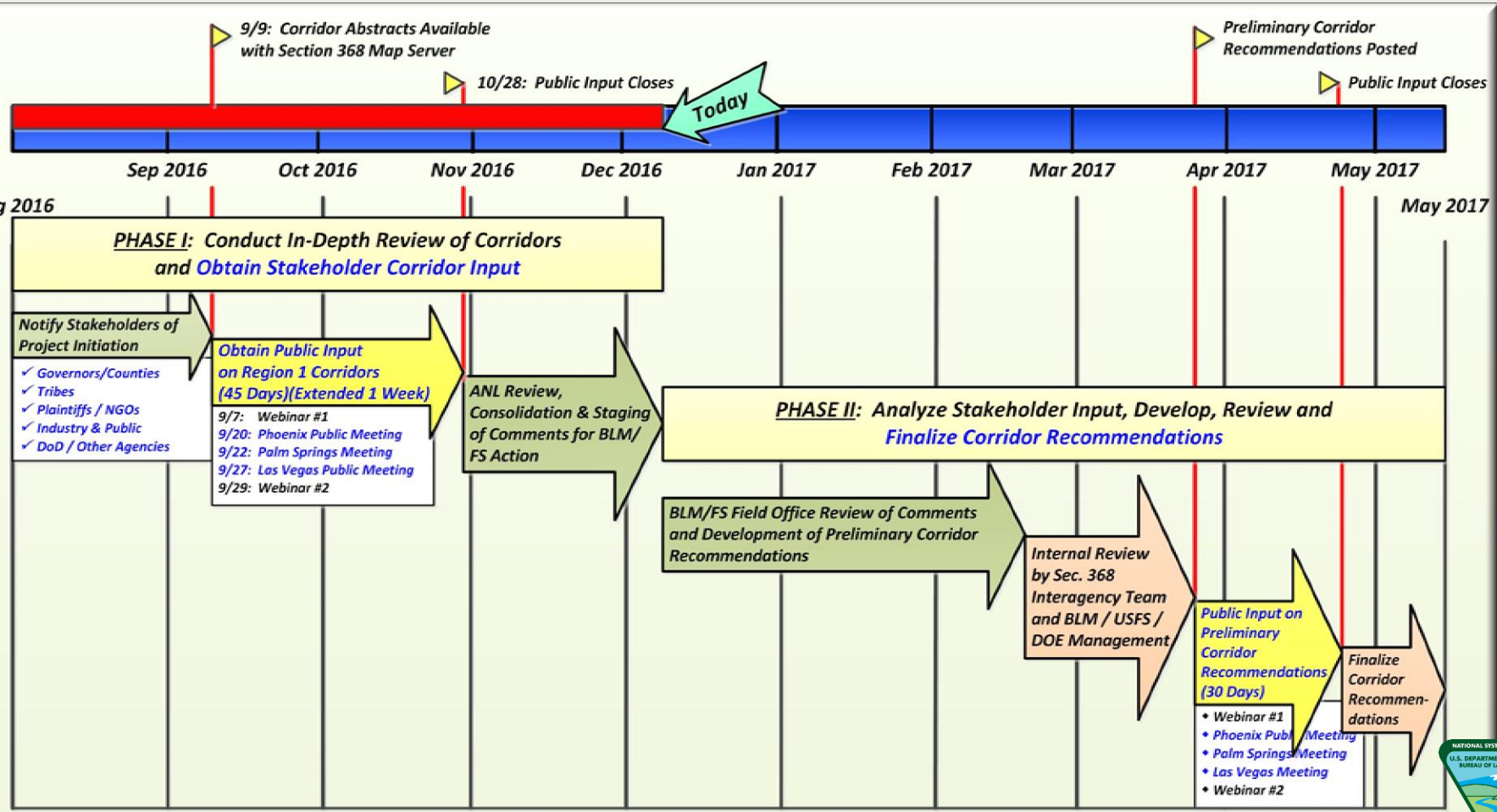


## Extent of Region 1 – Phase I Public Corridor Input

- ❖ **Received 65 Corridor Specific Comments and 12 Letters from**
  - ✓ **Industry: 6 Utility Companies, Merchant Transmitters/Generators**
  - ✓ **NGOs: 15 Environmental, Hiking and Historical Trail Entities**
  - ✓ **State Agencies: 6 State Game & Fish, Water and Energy Agencies**
  - ✓ **Counties: 5 County Governments in Arizona and California**
  - ✓ **Local Government: 4 Ranging from Small to Los Angeles DWP**
  - ✓ **Tribes: Approximately 4 Tribes**
  - ✓ **Federal Agencies: 2 via the NPS and BIA -> DoD Forthcoming**



# Region 1 Stakeholder Input Schedule: Phases I & II



❖ **The Same Stakeholder Input Process will be Used for Regions 2-6**



# Sec. 368 Energy Corridor - Information Resources

## Points of Contact:

- **Georgeann Smale, Sec. 368 Program Lead, BLM WO [gsmale@blm.gov](mailto:gsmale@blm.gov)**
- **Jim Gazewood, Project Mgr., Regional Reviews Project, BLM WO [jgazewoo@blm.gov](mailto:jgazewoo@blm.gov)**
- **Stephen Fusilier, Branch Chief, Rights-of-Way, BLM WO [sfusilie@blm.gov](mailto:sfusilie@blm.gov)**
- **Reggie, Woodruff, Lands Program Manager, USFS WO [rwoodruff@fs.fed.us](mailto:rwoodruff@fs.fed.us)**

## Corridor Study Release / 368 Information:

- <http://www.blm.gov/wo/st/en/prog/energy/transmission.html>
- [www.blm.gov/so/st/en/prog/energy/transmission.html](http://www.blm.gov/so/st/en/prog/energy/transmission.html)

## Section 368 Comments to:

- [blm wo 368corridors@blm.gov](mailto:blm_wo_368corridors@blm.gov)

## West-wide Energy Corridors Information Center Website:

- <http://corridoreis.anl.gov>

