



## WRP Partner Input on Species of Concern

*Unofficial review and assessment of top species that if listed could result in delays or increases in cost to program of work and mission*



## Western Regional Partnership (WRP)

The mission of the WRP is to provide *a proactive and collaborative framework for senior-policy level Federal, State and Tribal leadership to identify common goals and emerging issues in the states of Arizona, California, Nevada, New Mexico and Utah and to develop solutions that support WRP Partners and protect natural resources, while promoting sustainability, homeland security and military readiness.*

### **The Value of WRP**

WRP develops solutions that support Partners and protect natural resources, while promoting sustainability, homeland security and military readiness. In the West, there are significant military assets, infrastructure systems such as energy, transportation and wildlife ecosystems. Leveraging of resources and linking of efforts help to avoid duplication of efforts and encourages sharing of best practices. WRP Partners benefit from interagency and cross-state collaboration and use of WRP tools such as the Web Mapping Application.

### **The Purpose of this Document**

The purpose of this document is to detail WRP Partners' unofficial review and assessment on species of concern that, if listed, could result in delays or increases in cost to program of work and mission. WRP Partners spend significant resources to assist with environmental planning. Through enhanced collaboration among WRP Partners it may be possible to more effectively benefit the species and land in a non-regulatory environment. WRP seeks to encourage better information sharing to foster awareness of the interdependencies between Partners and provide for a more symbiotic relationship.

### **For More Information**

For more information on WRP please see [www.wrpinfo.org](http://www.wrpinfo.org). To participate in a WRP Committee or to receive updates, please complete the information under "mailing list" on the website.

## WRP Partner Input on Species of Concern

During the WRP 2014/2015 year, the Natural Resources Committee sought to find a better way to determine areas of importance to WRP Partners and species of concern. This baseline information will help the Committee with its future efforts.

### Introduction/Statement of Need:

Early conservation efforts (prior to a listing of a species) can maximize management options, reduce costs and ultimately eliminate the need for listing. WRP Partners spend significant resources to assist with environmental planning. Through enhanced collaboration among WRP Partners it may be possible to more effectively support species and land in a non-regulatory environment.

### Background:

- The WRP Principals adopted the following priority for the Natural Resources Committee to guide their 2014/2015 efforts: *“Provide information on new endangered species listings, areas of critical importance, U.S. Fish and Wildlife proposed rules, etc., develop recommendations on how WRP Partners might assist with the efforts to preclude listing of additional species that may impact Partners’ missions and identify pilot projects to foster sustainability of necessary habitat”*
- Initially, efforts were focused on obtaining the Multi-District Litigation (MDL) Settlement as a data layer to compare with land ownership and determine potential focus areas within the WRP region. However after coordinating with several US Fish and Wildlife Service Offices and other subject matter experts it became readily apparent that such data did not exist in a seamless layer. Nevertheless, this coordination assisted WRP in facilitating better working relationships with key members that assisted in this effort.
- The US Fish and Wildlife Service (USFWS) makes decisions, through their candidate assessment process, about which species are appropriate for listing. USFWS is also petitioned by outside groups to consider additional species. Courts may order the USFWS to make petition findings within certain timeframes.
- The USFWS Regional Offices geographic coverage in the WRP region includes:
  - Arizona and New Mexico - USFWS Region 2
  - California and Nevada - USFWS Region 8
  - Utah - USFWS Region 6

### Request for Input on Species of Concern

The WRP Natural Resources Committee requested agencies’ unofficial review and assessment of top three species on the lists below that if listed would trigger the need for regulatory compliance under the Endangered Species Act (ESA) and could result in delays or increases in cost to program of work and mission. With the request for input, the following supporting documents were circulated: USFWS Endangered Species Act Listing Workplan (FY13 - FY18 MDL packages and other court settlement agreements) and the USFWS report on active petitions (dated March 3, 2015). Over 40 agencies provided input; over 50 species were noted.

The process of collecting input was itself interesting. Many WRP Partners immediately responded with their species of concern and were thankful their input was sought. Others asked many

questions and expressed the concern that providing input might impact whether a species became listed. Through this effort a few observations could be made:

- Many WRP Partners would like additional information about the USFWS process
- There appear to be many misunderstandings about the listing process including timing, regulatory certainties, and the need for a forum for more information sharing
- Entities involved in efforts supporting species seem to be under many constraints

#### **“Top” Consolidated input (by number of responses)**

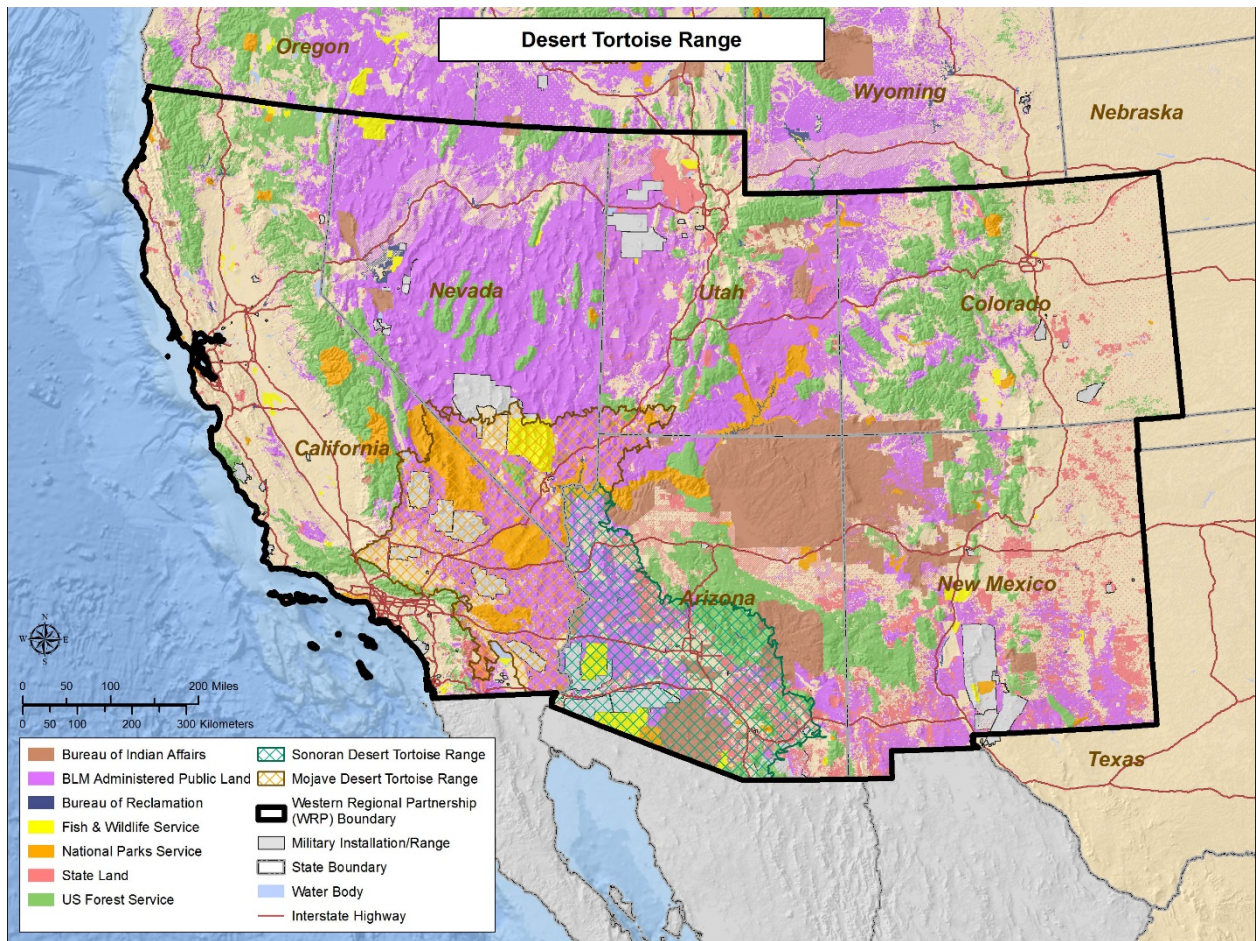
Over 40 agencies responded to the request to provide their unofficial review and assessment of their top three most impactful species listed on the USFWS Endangered Species Act Listing Workplan (FY13 - FY18 MDL packages and other court settlement agreements) and the USFWS report on active petitions (dated March 3, 2015). The consolidated input is listed below and details the raw input provided. The list below merely reflects input by numbers and details listing status, location and source links.

#### **17: Tortoise, Sonoran Desert (*Gopherus morafki*)**

- Listing Status: Candidate
  - Listing Priority: 6
  - Magnitude: High
  - Immediacy: Non-imminent
  - Taxonomy: Subspecies/population
- WRP States:
  - Arizona (Cochise, Gila, Graham, La Paz, Maricopa, Mohave, Pima, Pinal, Santa Cruz, Yavapai, Yuma Counties)
- Non-WRP States: None
- WRP State USFWS Refuges in which is known to occur:
  - Arizona-Bill Williams River National Wildlife Refuge, Cibola National Wildlife Refuge, Imperial National Wildlife Refuge, Kofa National Wildlife Refuge

Source: <http://ecos.fws.gov/speciesProfile/profile/speciesProfile.action?sPCODE=C07G>





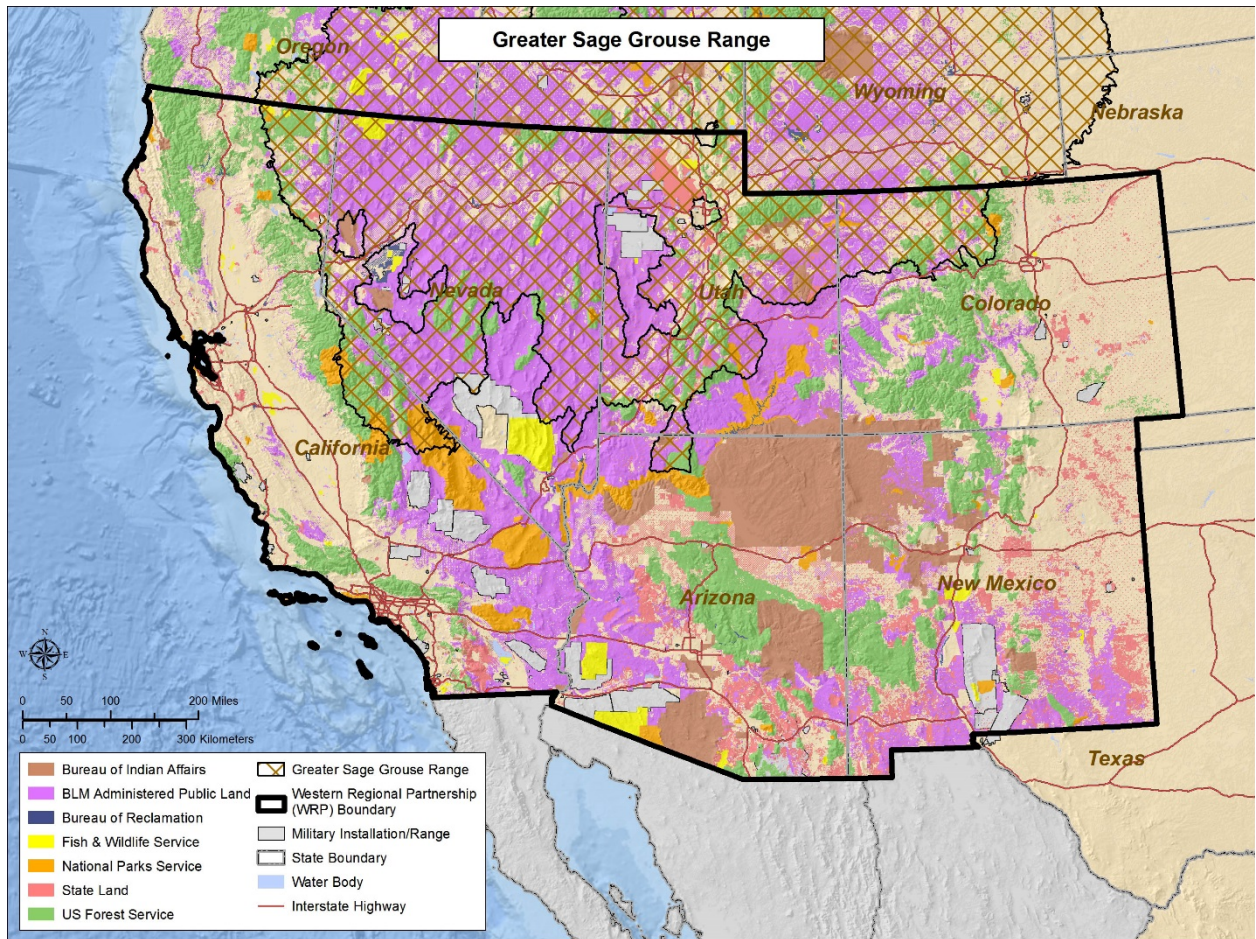
#### 14: Sage-grouse, Greater (*Centrocercus urophasianus*)

- Listing Status: Candidate
  - Listing Priority: 8
  - Magnitude: Moderate to Low
  - Immediacy: Imminent
  - Taxonomy: Species
- WRP States:
  - California (El Dorado, Lassen, Modoc, Shasta, Siskiyou Counties, possibly others)
  - Nevada
  - (Carson City, Churchill, Douglas, Elko, Esmeralda, Eureka, Humboldt, Lander, Lyon, Mineral, Nye, Pershing, Storey, Washoe, White Pine Counties, possibly others)
- Non-WRP States:
  - Colorado
  - Idaho
  - Montana
  - North Dakota
  - Oregon
  - South Dakota
  - Washington
  - Wyoming



- WRP State USFWS Refuges in which is known to occur:
  - Nevada- Sheldon National Wildlife Refuge

Source: <http://ecos.fws.gov/speciesProfile/profile/speciesProfile.action?scode=B06W>



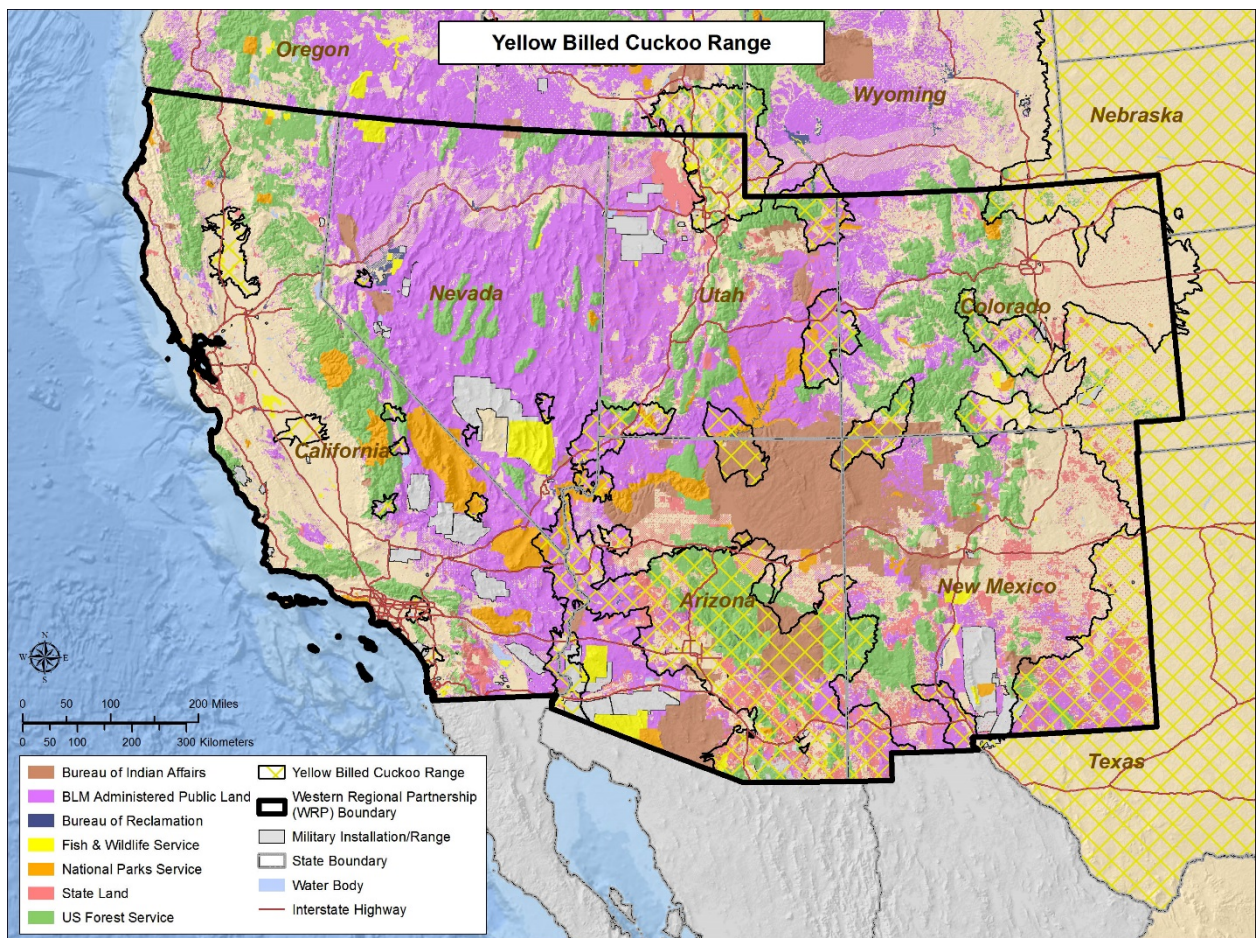
#### 9: Cuckoo, Yellow-billed (*Coccyzus americanus* Western U.S. DPS)

- Listing Status: Threatened
- WRP States
  - Arizona (All counties)
  - California (Del Norte, Humboldt, Los Angeles, Mendocino, Modoc, San Luis Obispo, Santa Barbara, Santa Cruz, Siskiyou, Trinity, Ventura Counties, possibly others)
  - Nevada (Clark, Elko Lincoln, Lyon, Mineral, Nye Counties, possibly others)
  - New Mexico Utah
- Non-WRP States
  - Colorado
  - Idaho
  - Montana
  - Oregon
  - Texas
  - Washington



- USFWS Refuges in which is known to occur:
  - Arizona- Bill Williams River National Wildlife Refuge, Cibola National Wildlife Refuge, Imperial National Wildlife Refuge, Leslie Canyon National Wildlife Refuge, San Bernardino National Wildlife Refuge
  - California- Butte Sink Wildlife Management Area, Cibola National Wildlife Refuge, Imperial National Wildlife Refuge, Sacramento River National Wildlife Refuge
  - Nevada- Sheldon National Wildlife Refuge, Sutter National Wildlife Refuge
  - New Mexico- Bosque Del Apache National Wildlife Refuge, Maxwell National Wildlife Refuge, Sevilleta National Wildlife Refuge
  - Utah- Ouray National Wildlife Refuge

Source: <http://ecos.fws.gov/speciesProfile/profile/speciesProfile.action?sPCODE=B06R>



#### 6: Sage-grouse, Greater, Bi-State (*Centrocercus urophasianus* DPS)

*Note: Immediately following the request for WRP Partner input, the USFWS ruled that this species has been withdrawn as a candidate.*

- Listing Status: Withdrawn
- WRP States:
  - California (El Dorado, Lassen, Modoc, Shasta, Siskiyou Counties, possibly others)
  - Nevada (Carson City, Churchill, Douglas, Elko, Esmeralda, Eureka, Humboldt, Lander, Lyon, Mineral, Nye, Pershing, Storey, Washoe, White Pine Counties)

- Non-WRP States:
  - None
- WRP State USFWS Refuges in which is known to occur:
  - Nevada- Sheldon National Wildlife Refuge

Source: [Endangered and Threatened Wildlife; Withdrawal of the Proposed Rule To List the Bi-State Distinct Population Segment of Greater Sage-Grouse and Designate Critical Habitat; Proposed rule; withdrawal. 80 FR 22827 22866, 4-23-2015](#)

#### 4: Blackbird, Tricolored (*Agelaius tricolor*)

- Listing Status: Not Listed
- WRP States:
  - California
  - Nevada
- Non-WRP States
  - Oregon

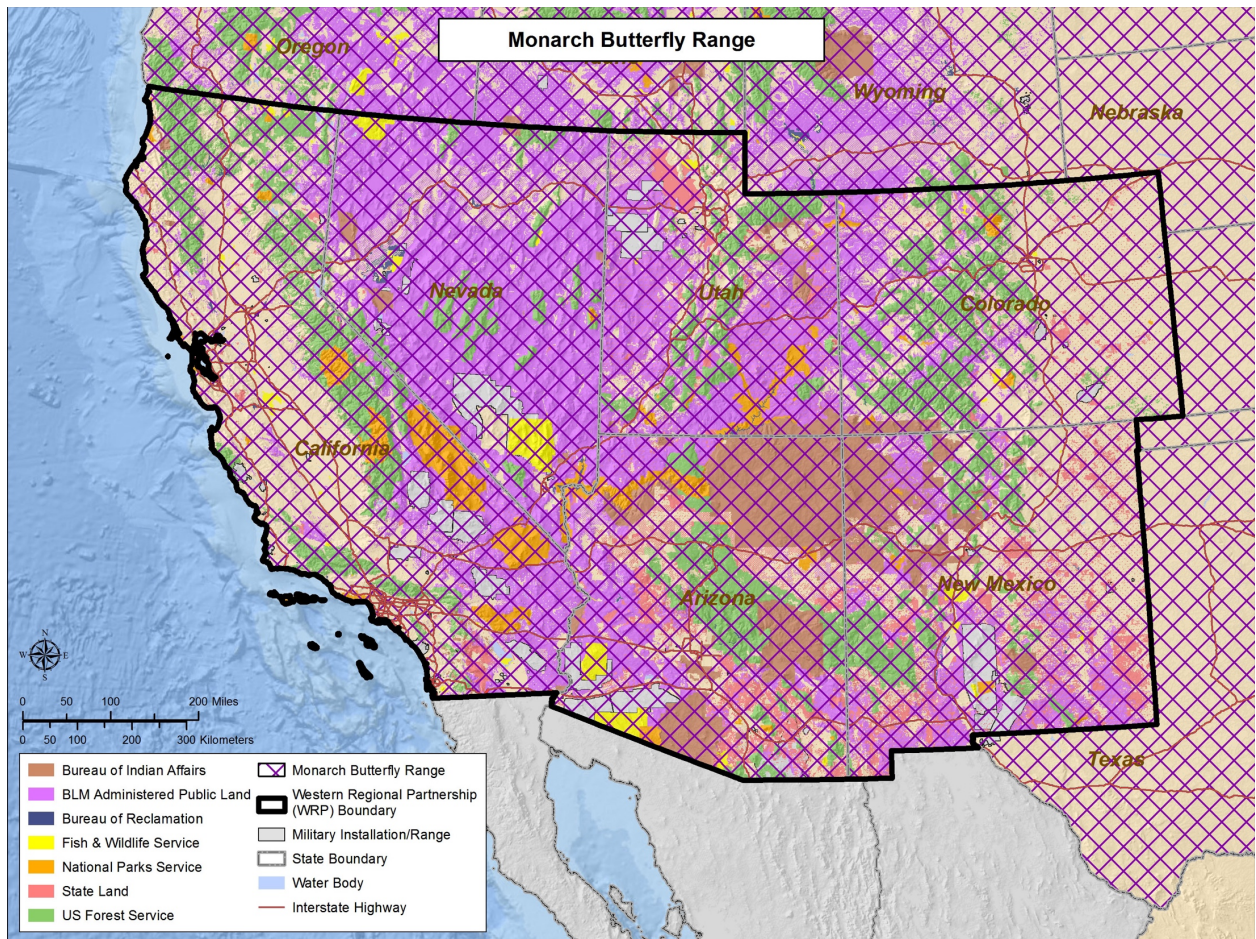
Source: <http://ecos.fws.gov/speciesProfile/profile/speciesProfile.action?sPCODE=B06P>

#### 4: Butterfly, Monarch (*Danaus plexippus plexippus*)

- Listing Status: Under Review
- WRP States:
  - All
- Non-WRP States:
  - All or virtually all

Source: <http://ecos.fws.gov/speciesProfile/profile/speciesProfile?sPCODE=I0WJ>



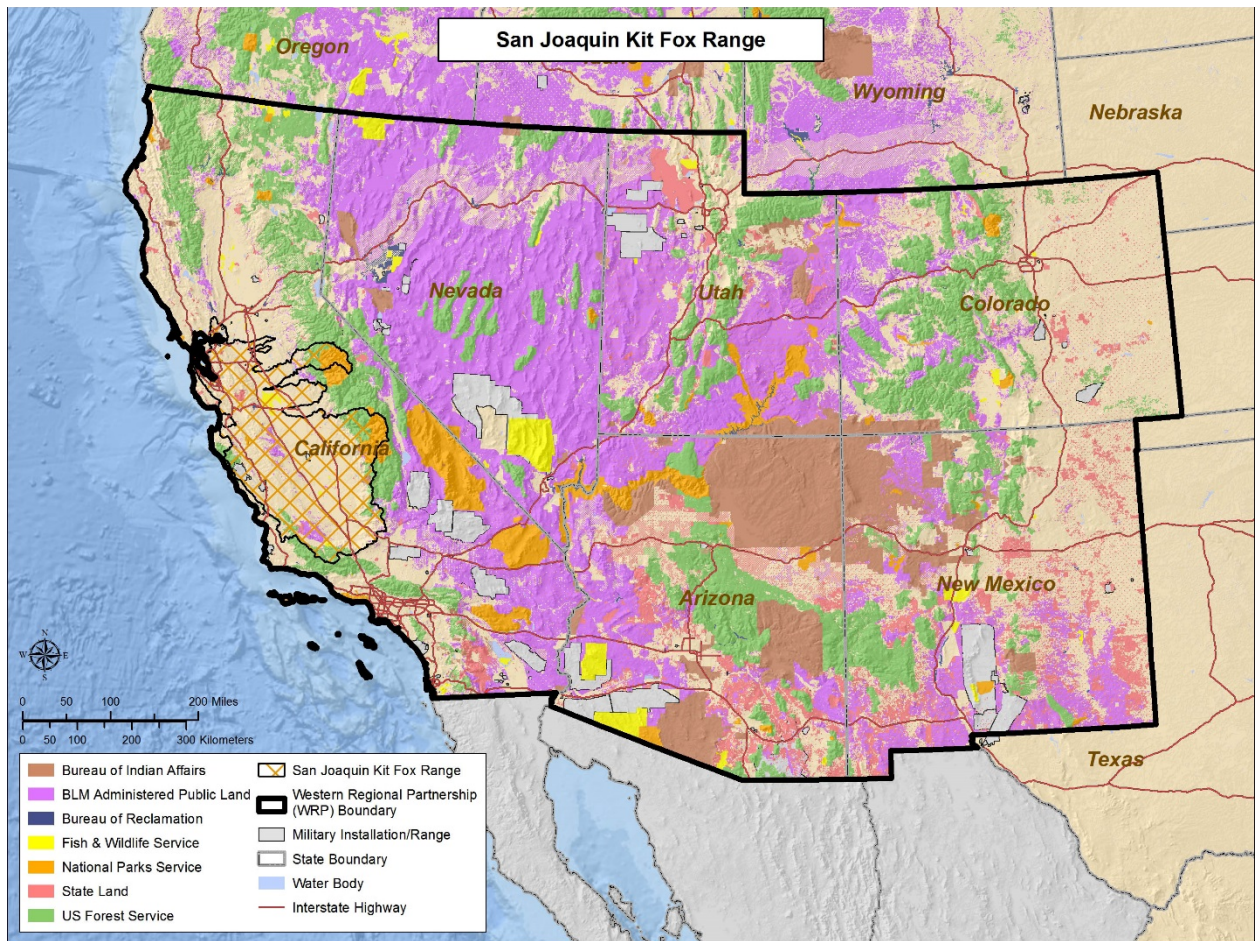


### 3: Fox, San Joaquin Kit (*Vulpes macrotis mutica*)

- Listing Status: Endangered
- WRP States:
  - California (Alameda, Calaveras, Contra Costa, Fresno, Kern, Kings, Madera, Mariposa, Merced, Monterey, Sacramento, San Benito, San Joaquin, San Luis Obispo, Santa Barbara, Santa Clara, Santa Cruz, Solano, Stanislaus, Tulare, Tuolumne Counties)
- USFWS Refuges in which is known to occur:
  - California-Bitter Creek National Wildlife Refuge, Kern National Wildlife Refuge, Merced National Wildlife Refuge, Pixley National Wildlife Refuge, San Luis National Wildlife Refuge

Source: <http://ecos.fws.gov/speciesProfile/profile/speciesProfile.action?spscode=A006>



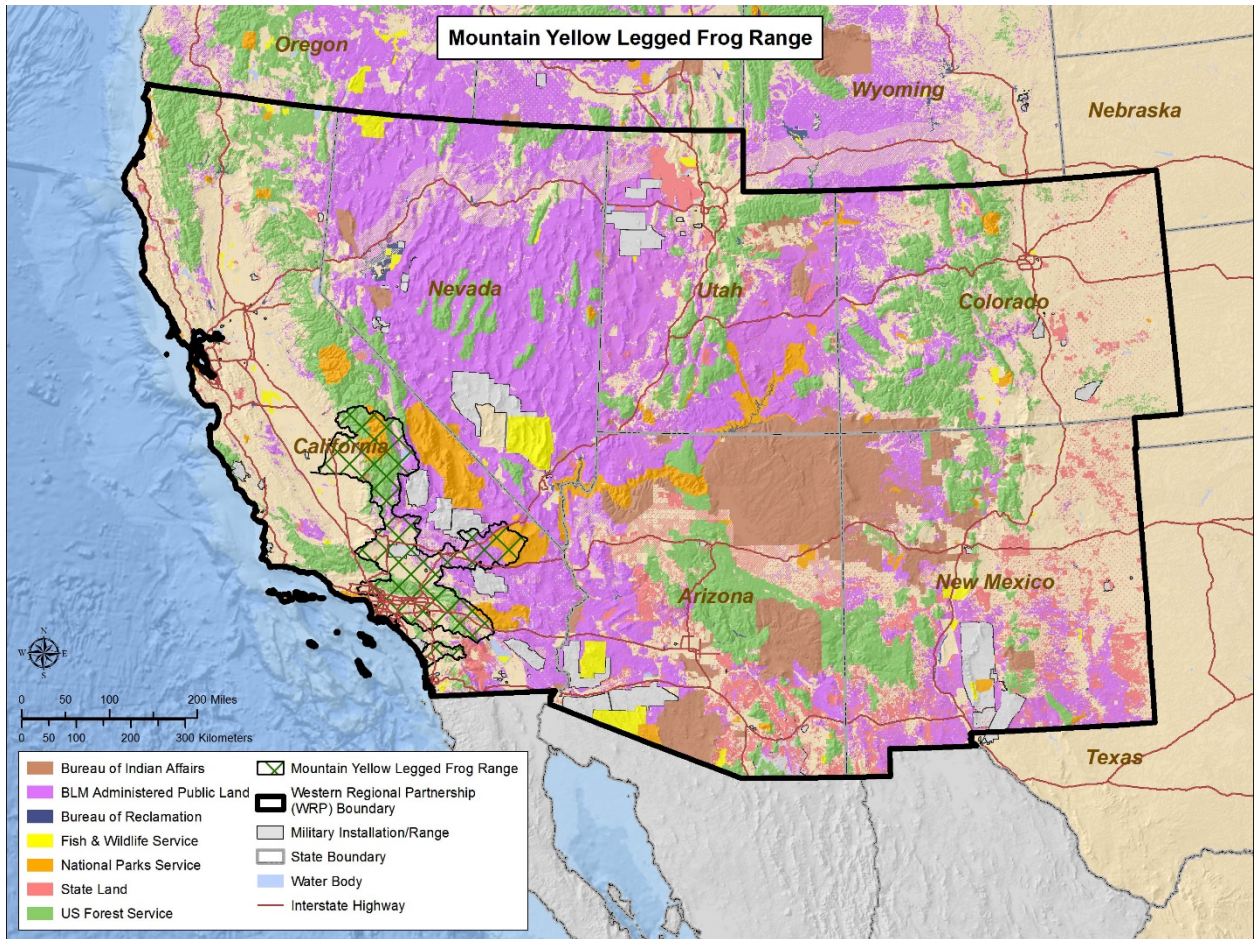


### 3: Frog, Mountain Yellow-legged (*Rana muscosa*)

- Listing Status: Endangered
- WRP States:
  - California (Fresno, Inyo, Los Angeles, Madera, Mono, Riverside, San Bernardino, San Diego, Tulare, Ventura Counties)
  - Nevada (Douglas County)

Source: <http://ecos.fws.gov/speciesProfile/profile/speciesProfile.action?spscode=D02H>





**All of the following had two responses:**

- Beardtongue, Graham's (*Penstemon grahamii*)
- Beardtongue, White River (*Penstemon scariosus* Pennell var. *albifluvis*)
- Chub, Headwater (*Gila nigra*)
- Chub, Rio Grande (*Gila Pandora*)
- Chub, Roundtail (*Gila robusta*)
- Fisher (*Martes pennanti*)
- Flycatcher, Southwestern Willow (*Empidonax traillii extimus*)
- Fox, Sierra Nevada Red (*Vulpes vulpes necator*)
- Frog, Arizona Tree (*Hyla wrightorum*)
- Frog, Relict Leopard (*Lithobates onca*)
- Milk-vetch, Goose Creek (*Astragalus anserinus*)
- Mouse, Pacific Pocket (*Paragnathus longimembris pacificus*)
- Owl, California Spotted (*Strix occidentalis occidentalis*)
- Pipit, Sprague's (*Anthus spragueii*)
- Snail, Mohave Shoulderband (*Helminthoglypta greggi*)
- Springsnail, Great Basin (*Prygulopsis* (37 species)/*Tryonia* (5 species))
- Sucker, Rio Granede (*Catostomus plebeius*)
- Toad, Boreal (*Anaxyrus boreas boreas*)
- Tortoise, Desert (*Gopherus agassizii*)
- Vireo, Least Bell's (*Vireo bellii pusillus*)