

West-Wide Wind Mapping Project (WWMP) Project Overview

Ray Brady

Bureau of Land Management

Karen P. Smith

Argonne National Laboratory

**Presented to the
Western Regional Partnership Energy Committee
February 25, 2015**

The WWMP is a Mapping Exercise to Assist in Identifying Wind Energy Resource Opportunity Areas on Public Lands in the West

The objective is to develop maps of BLM-administered lands in eleven western states showing:

1. Distribution of potentially developable wind resources

- Lands where wind speeds at 80-m hub heights are ≥ 5 m/sec

2. Exclusions from wind energy development

- Lands currently excluded on the basis of decisions made in the 2005 Wind PEIS and subsequent policy (IM 2009-043) and land use plan amendments
- Additional lands that are likely to be excluded via other planning efforts (e.g., sage-grouse priority habitat) or also warrant exclusion (e.g., areas of critical environmental concern [ACECs])

3. Other resource sensitivities

- Lands where other resources or values are present and could be adversely impacted by wind energy development

WWMP Process

- ***Develop current wind exclusion maps***
 - Compile updated geospatial data for National Landscape Conservation System (NLCS) lands, other Wind PEIS exclusions, and other resource management plan (RMP) exclusions for wind energy development

- ***Identify and map other resource sensitivities***
 - Identify categories of other resources that could be sensitive to wind energy development and compile geospatial data
 - Identify which of the other sensitive resources would require a high level of siting review vs. moderate level of siting review

- ***Engage stakeholders***
 - Public meeting held in September in Denver to solicit input on the project; other meetings and/or webinars to be scheduled as needed to provide updates and share results

- ***Document methodology in a written report***

- ***Develop online interactive mapping tool***
 - Provide easy access to exclusion and sensitive resource maps, and underlying datasets

Wind Energy Exclusions

Existing Exclusions

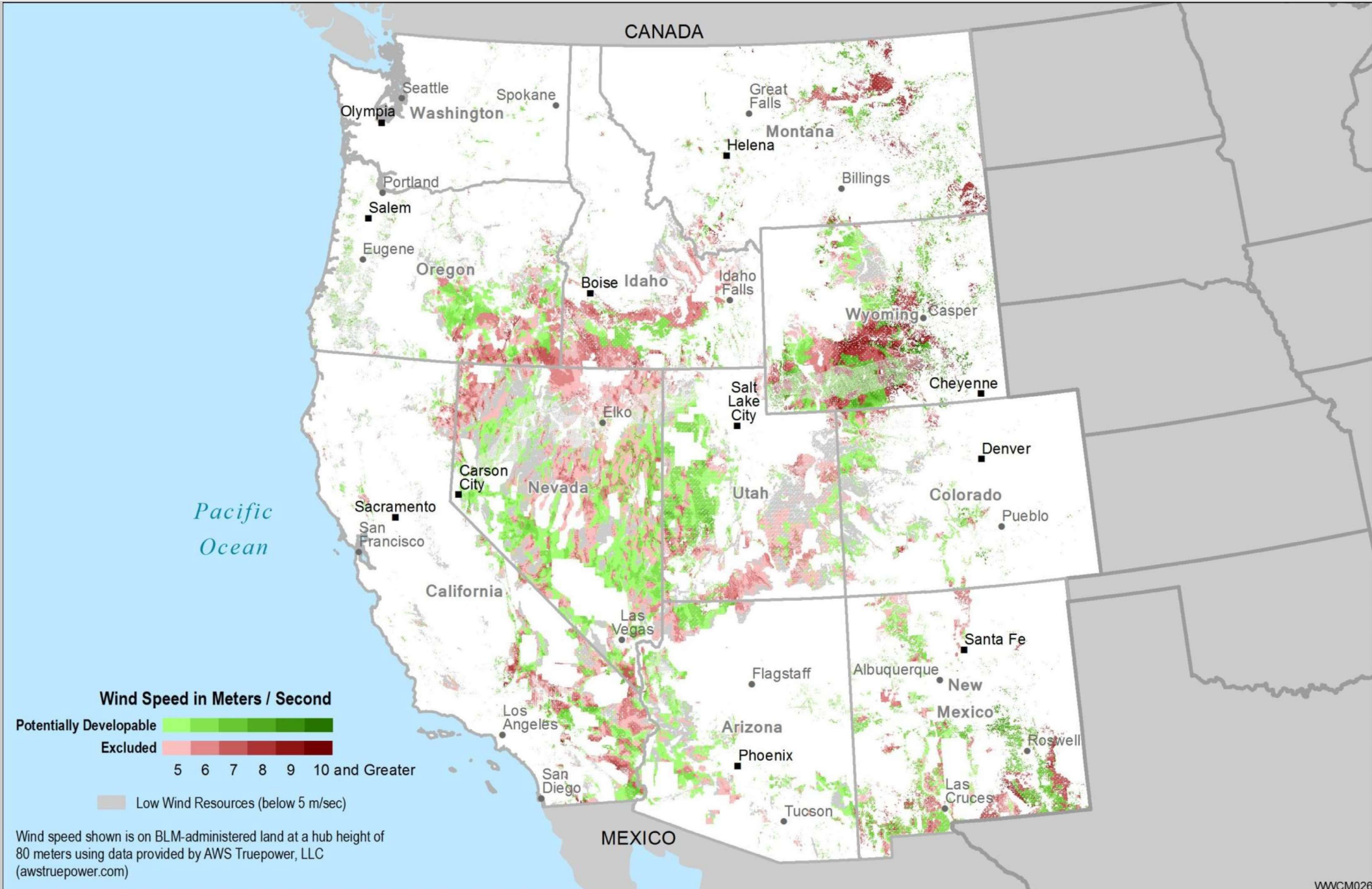
- All designated NLCS lands
- Lands inventoried and managed for wilderness characteristics
- National Natural Landmarks
- Right-of-way (ROW) exclusion areas
- RMP wind exclusion areas
- Lands acquired with federal funds for conservation purposes
- Visual Resource Management (VRM) Class I lands
- National Scenic and Historic Trails
- National Historic Landmarks
- National Historical Parks and National Historic Sites
- Properties listed on National Register of Historic Places, or comparable state registers

Additional Proposed Exclusions

- ACECs and Research Natural Areas (RNAs)
- Sage-grouse priority habitat as mapped by ongoing planning efforts
- Greater sage-grouse core habitat as mapped in Wyoming

Preliminary Draft WWMP Exclusions Map

Some exclusions are not shown on the map due to lack of geospatial data; these exclusions are not likely to change this map significantly.

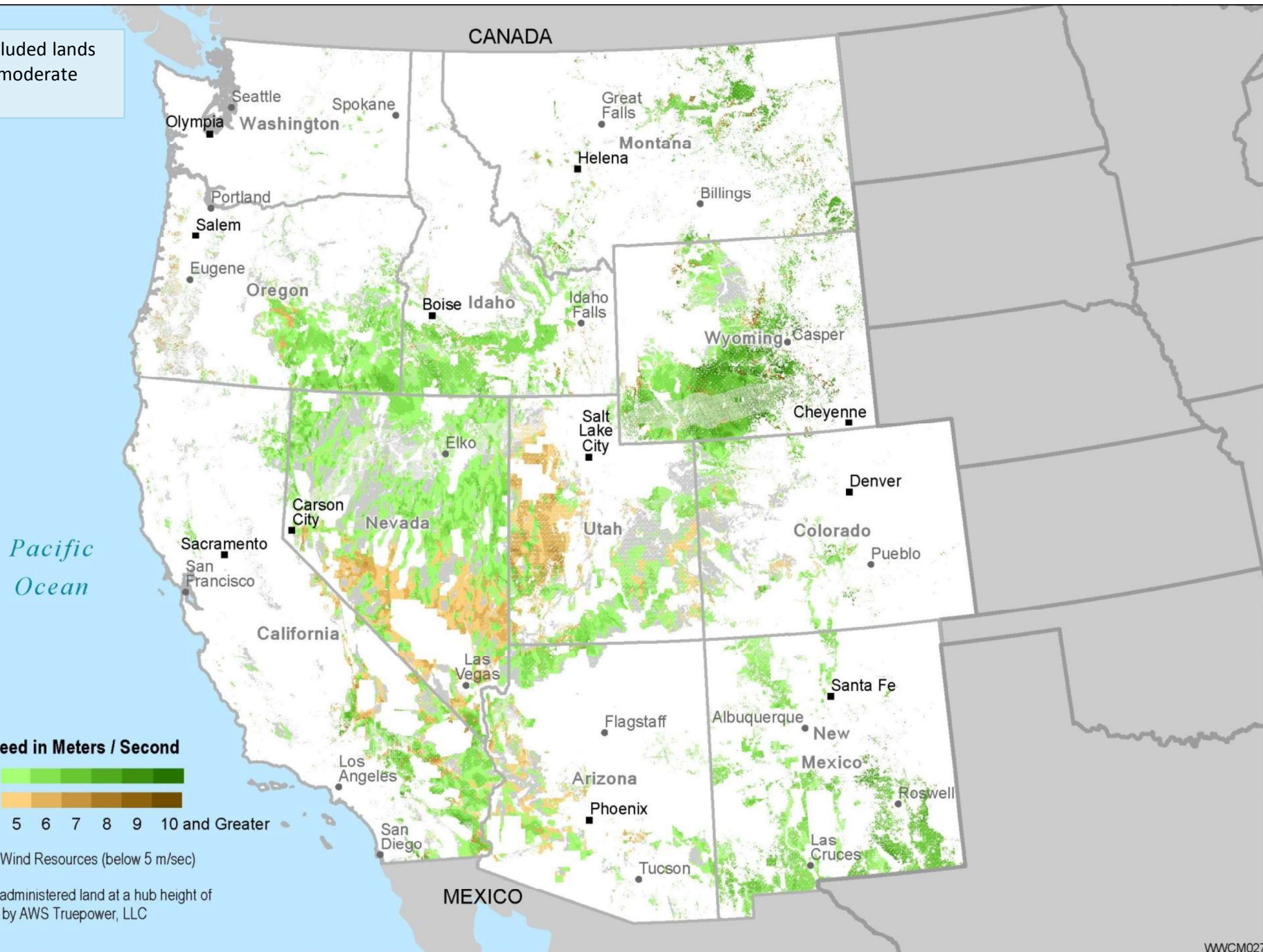


Other Sensitive Resources Are Anticipated to Require a High Level of Siting Review

- Designated critical habitat for ESA-listed species (including desert tortoise and listed raptors)
- DOD-designated High Risk of Adverse Impact Zones
- Designated BLM utility corridors
- No surface occupancy areas
- RMP wind avoidance areas
- ROW avoidance areas
- State historic trails
- VRM Class II

Preliminary Draft WWMP Map of Lands Anticipated to Require a High Level of Siting Review

Does not show excluded lands or lands requiring moderate level of review

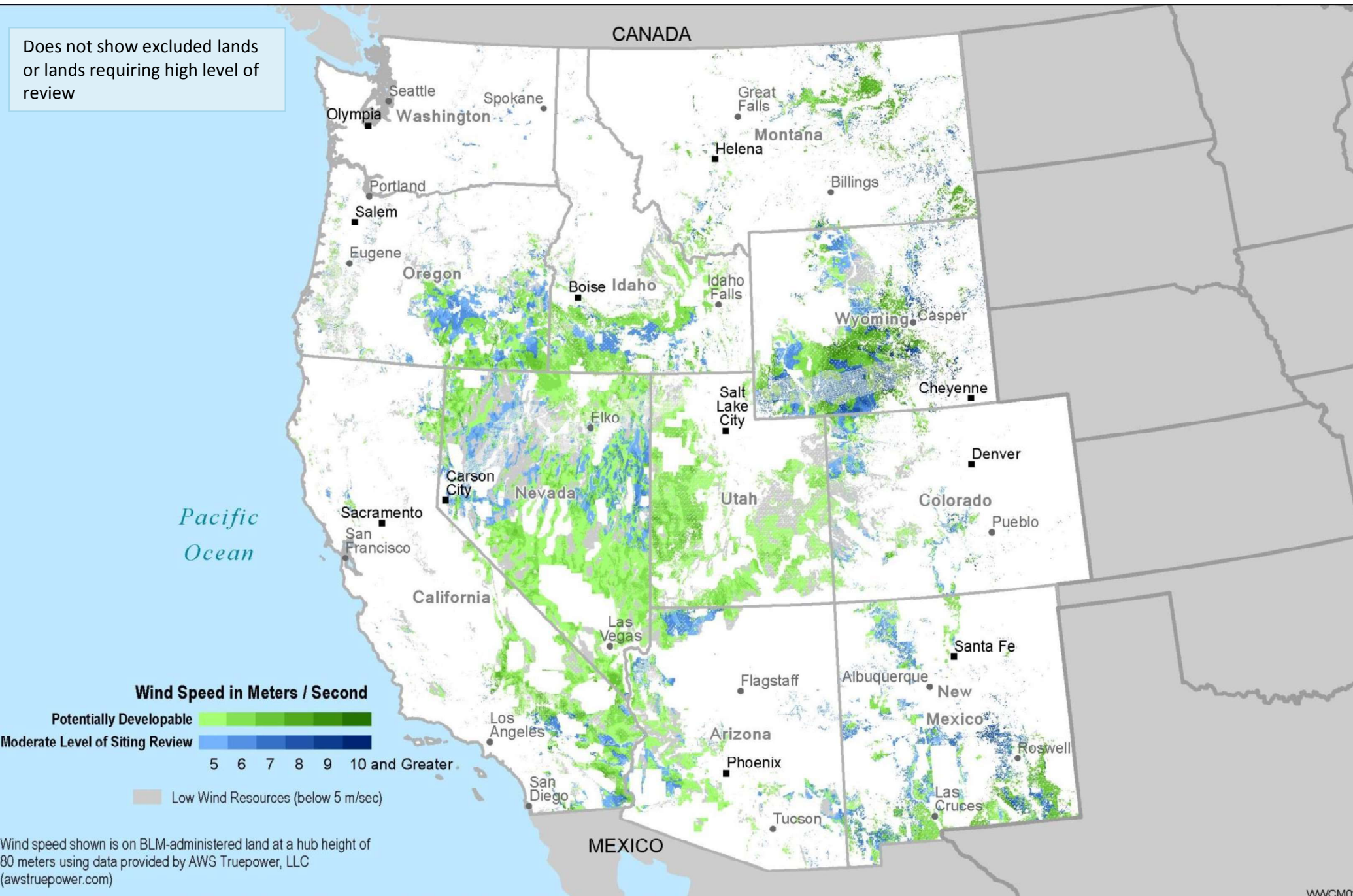


Other Sensitive Resources Are Anticipated to Require a Moderate Level of Siting Review

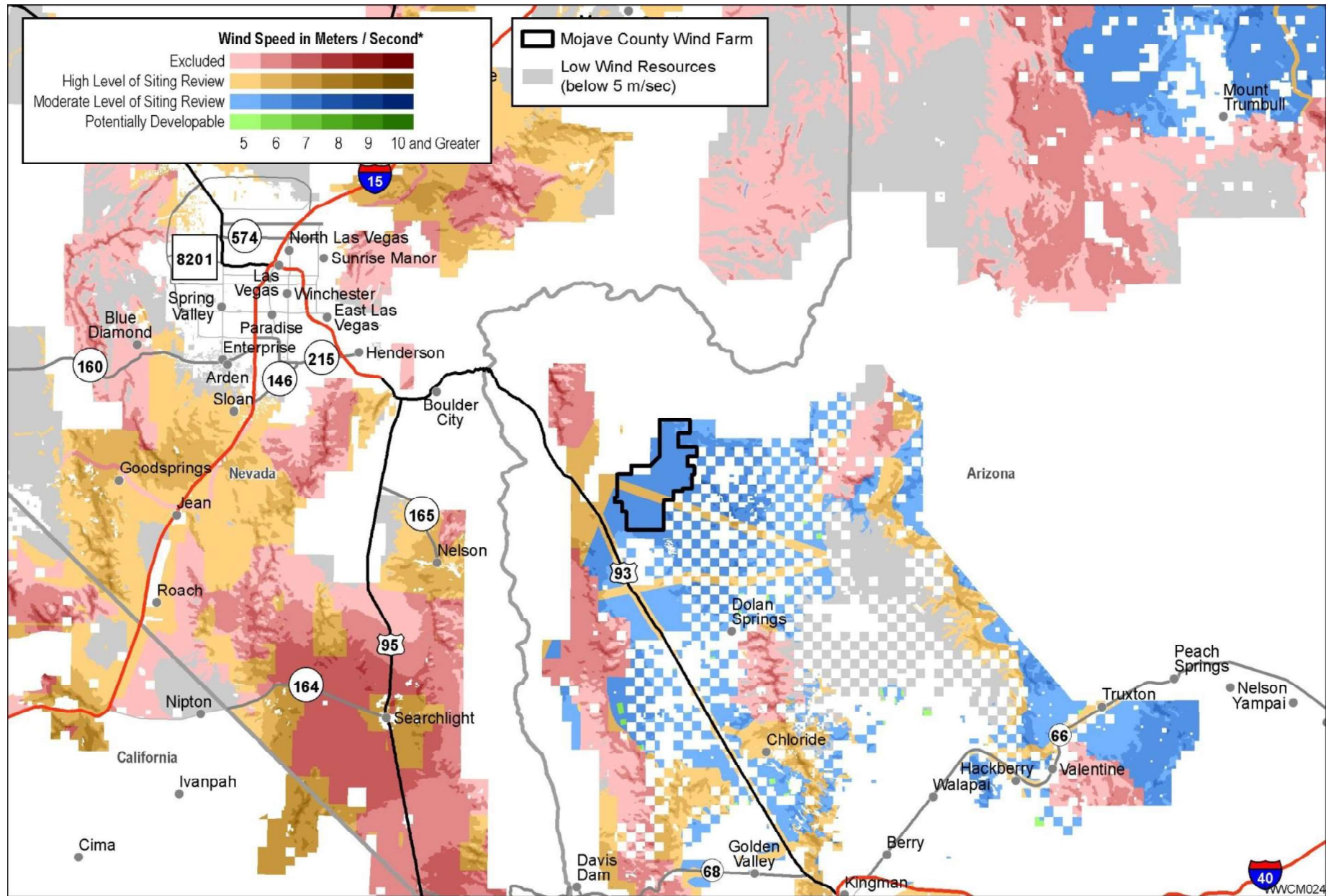
- Desert Wildlife Management Areas in California
- Designated special status species management areas
- Sage-grouse general habitat, as mapped by ongoing planning efforts
- Other grouse habitat
- Bald and golden eagle and other non-critical habitat for ESA-listed raptors Wildlife Management Areas
- Important Bird Areas (Nat'l Audubon Society)
- Crucial habitat mapped by WGA's Crucial Habitat Assessment Tool
- DOD restricted airspace and military training routes
- Lands purchased by private funds and donated to BLM
- Long Term Visitor Use Areas
- Off Highway Vehicle Open Areas
- Special Recreation Management Areas
- State scenic highways
- Areas of Tribal Concern
- BLM-identified NRHP-eligible sites
- BLM back-country byways
- National Scenic Highways/All American Roads
- VRM Class III

Preliminary Draft WWMP Map of Lands Anticipated to Require a Moderate Level of Siting Review

Does not show excluded lands or lands requiring high level of review



Example Map of WWMP Analysis and Existing Wind Project

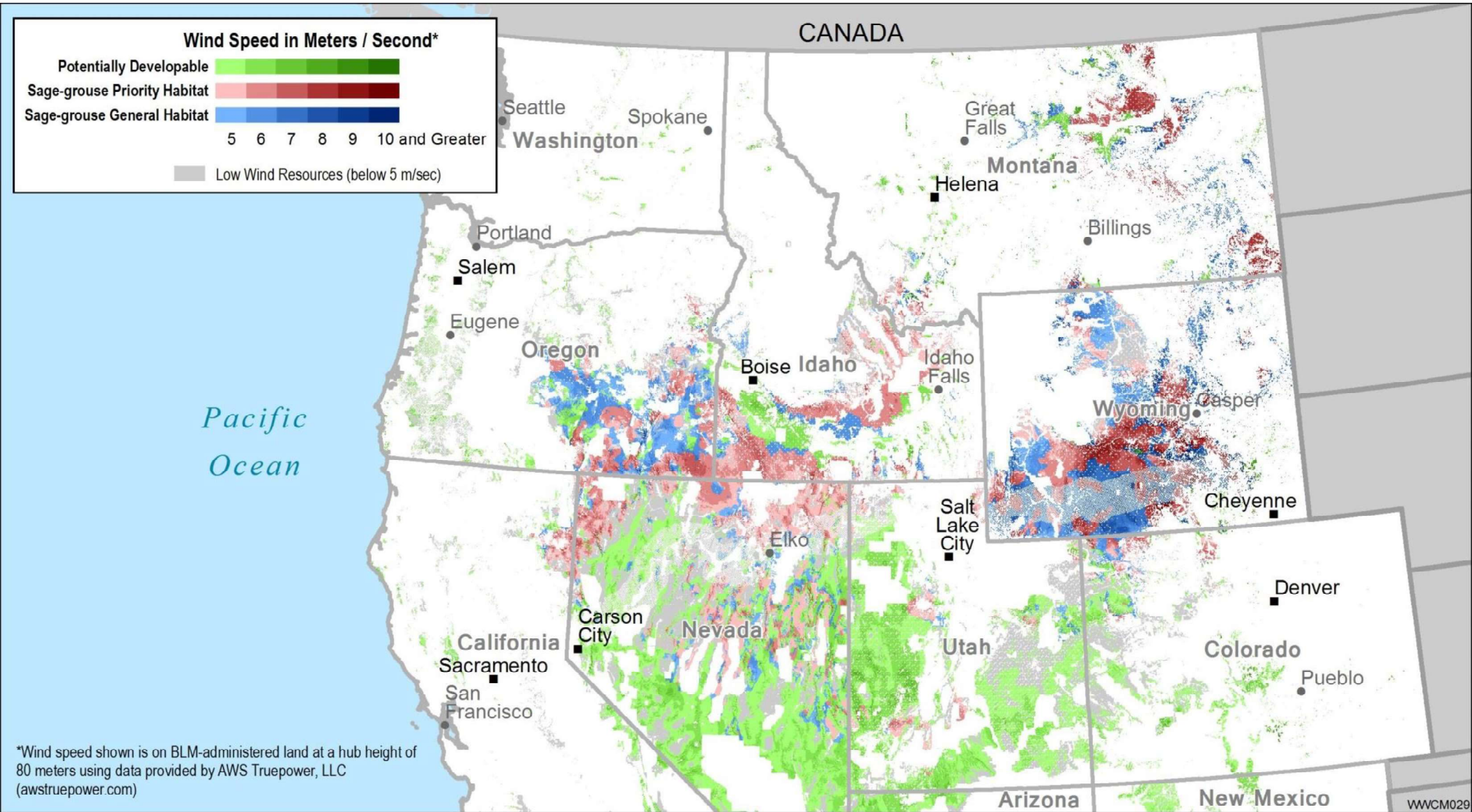


* Based on data provided by AWS Truepower, LLC (Shown on BLM-Administered Land, only)

WWMP Overview, February 2015

Distribution of Wind Resources and Sage-Grouse Habitat on BLM-Administered Lands

Habitat as presented in administrative draft proposed sage-grouse management plans released in 2014



State-Level Follow-on Efforts Will Be Informed by the WWMP Products

WWMP is a regional mapping exercise: individual states may undertake more detailed evaluations and planning efforts

- Wyoming Wind Energy Development Sensitivity Analysis (WWEDSA)
- California Desert Renewable Energy Conservation Plan
- Sage-grouse planning efforts
- BLM Oregon Wind Energy Development Challenges and Opportunities mapping project (completed 2013)
- Other local BLM RMP planning efforts