

Western Regional Partnership U.S. Army Corps of Engineers South Pacific Division

8 July 2015

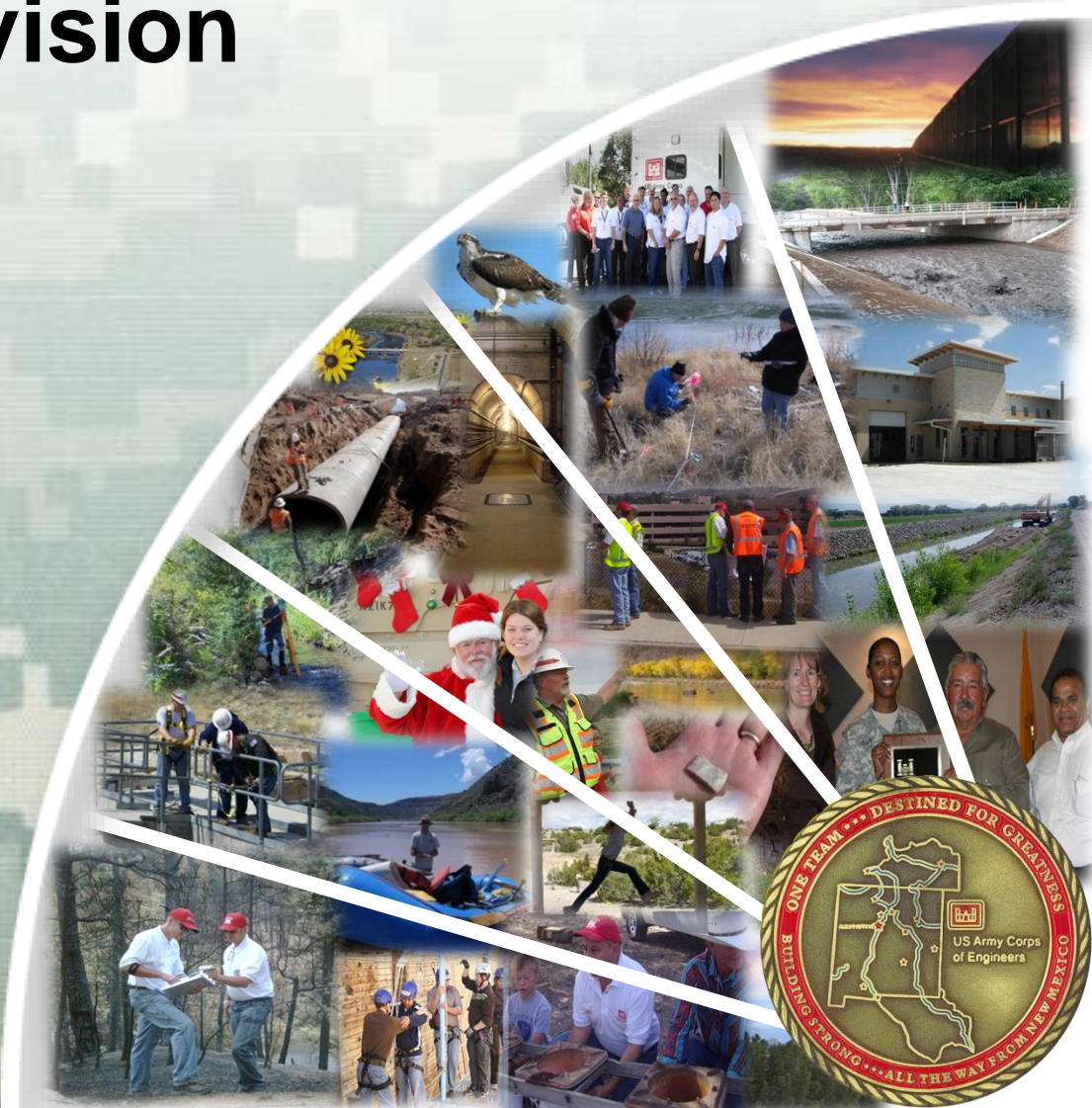
Ron Kneebone, Ph.D.
Albuquerque District
Quana Higgins
Los Angeles District
Rhiannon Kucharski
Sacramento District
Thomas Kendall
San Francisco District



®

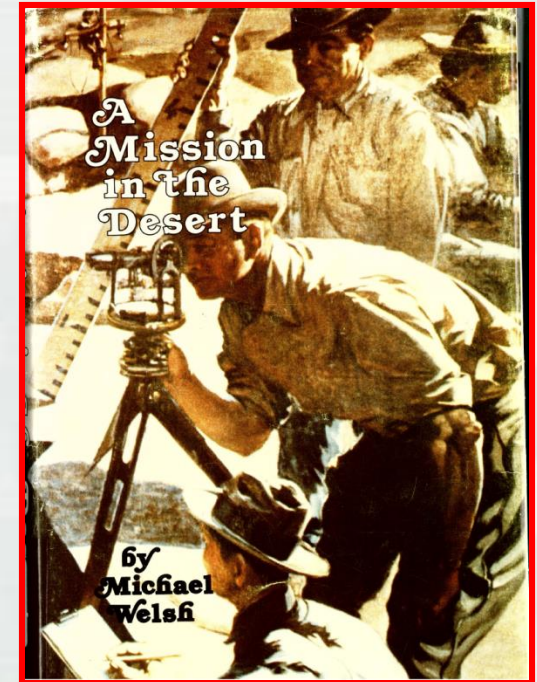
US Army Corps of Engineers
BUILDING STRONG®

One Team ★★★ Destined For Greatness



AGENDA

- South Pacific Division: Our Region
 - Albuquerque District
 - San Francisco District
 - Los Angeles District
 - Sacramento District



National Leaders:

- 81 U.S. House
- 20 U.S. Senate
- 10 State Delegations
- 167 Federally Recognized Tribes

Our Region

By the numbers:

- 10 States; 5 shared with other regions
- 8th largest economy in world – California
- 5 major river basins
- 1,100 miles of coastal diversity
- 90% of Californians live an hour from the coast
- 27 federal ports & harbors support 1.16M jobs; \$22B in personal income (CMANC)
- 40% of Harbor Maintenance Trust Funds contributed by CA; 8% returned
- 2,286 miles of federal levees
- 46 dams & reservoirs
- 34 recreation areas with 16M visits a year
- More than 300 threatened or endangered species (1/4 of all listed in U.S.)
- More than 8,000 regulatory actions annually
- 25% of all Formerly Used Defense (FUDS) and 38% of all Military Munitions (MMRP) environmental restoration



Federal Partners:

- 13 Army & 12 Air Force Installations
- 4 FEMA Regions (6, 8, 9, 10)
- 4 EPA Regions (6, 8, 9, 10)
- 3 U.S. FWS Service Regions (1, 2, 6)
- 1 National Marine Fisheries Office
- 4 Veterans Affairs Integrated Service Networks (18, 19, 21, 22)
- U.S. Coast Guard (District 11)

Civil Works Support

Our Region Supports—

- 27 federal ports & harbors
- 40% of Harbor Maintenance Trust Funds
- 2,286 miles of federal levees
- 46 dams & reservoirs
- 34 recreation areas with 16M visits a year
- Regulatory averages /year
 - 3,375 general permits
 - 4,008 individual permits
 - 4,701 jurisdictional determinations



OUR MILITARY SUPPORT



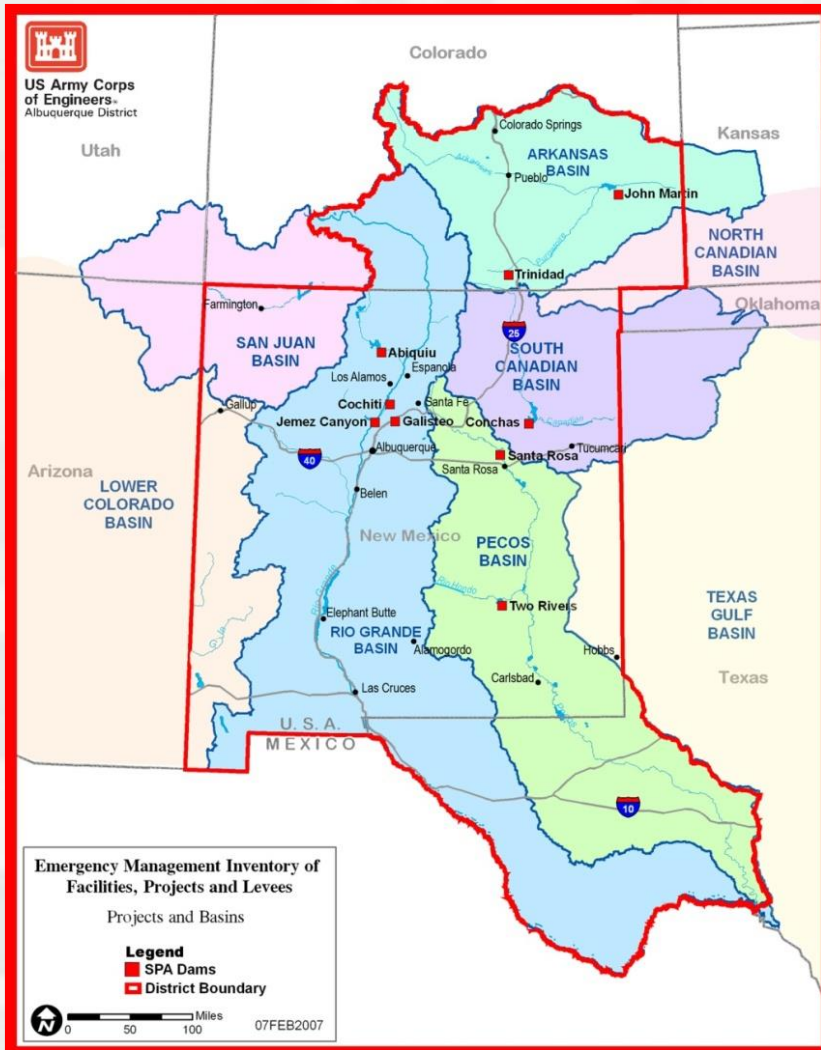
ALBUQUERQUE DISTRICT



- Primarily serving 3 States (NM, CO, TX)
- 6 Senators; 10 Congressional Districts
- FY13 Program—\$307 Million
- Estimated FY 14 Program - \$258 Million
- Approx. 362 employees
- 2 employees deployed in support of OEF; 2 volunteers selected for taskers; 2 volunteers Civil Deployments
- 3 Regulatory Field Offices
- Manage 9 Flood Risk Management (FRM) Projects; 4 USACE & 8 State Campgrounds; 6.7 Million visits annually
- Operate & maintain 9 dams
- Support 3 Major Air Force Installations, New Mexico Army National Guard and Army Reserve
- 4 Construction Resident Offices
- Partner with 23 Federally recognized tribes



OPERATIONS



Operations funds about 60% of all direct labor for Civil Works including IIS and about 35% of all District direct labor.

Arkansas Basin

- John Martin
- Trinidad

Rio Grande Basin

- Abiquiu
- Cochiti
- Galisteo
- Jemez Canyon

Pecos Basin

- Santa Rosa
- Two Rivers

South Canadian Basin

- Conchas

Flood Risk Management (OCA, Asset Mgt, FEM)

Recreation and Natural Resources Management

Upper Rio Grande Water Ops Model

Geospatial Unit GIS/GPS Services



Conchas Stilling Basin



Cochiti log-boom & debris



Bears near Conchas office

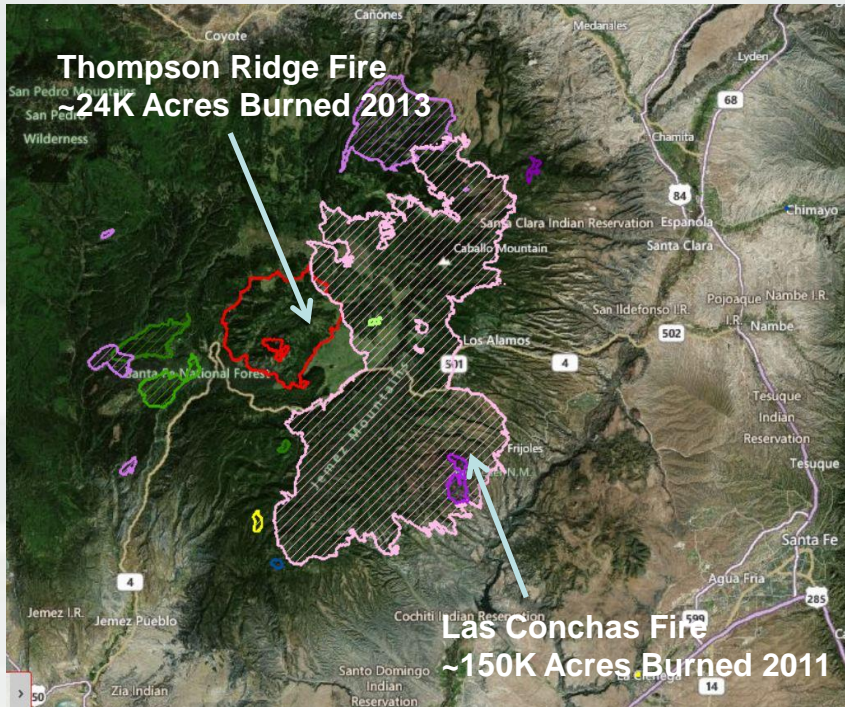


Water Safety at Abiquiu

READINESS & CONTINGENCY OPERATIONS



Emergency Response



Albuquerque District AOR

- Includes 3 States
- Borders 6 districts
- Divided by 2 FEMA Regions (VI and VIII)
- 23 Federally Recognized Pueblos/Tribes
- International Boundary – Mexico

ESF #3 Emergency Power Team

- Mission: Provide local/state officials broad support for their unmet temporary emergency power needs
- 36 Team Members trained and ready to deploy

Wildfire and Flood Response

- Silver Fire (near Hillsboro, NM)
- Thompson Ridge Fire (near La Cueva, NM)
- Jaroso Fire (Pecos Wilderness, NM)
- West Fork Fire (Creed, CO)
- Santa Clara Pueblo Flash Flood (Santa Clara, NM)

Disaster Response

- SPA employees deployed to Joplin, MO and Hurricane Sandy



MILITARY MISSION

Obligations	FY12	FY13	FY14
MILCON	\$287.0 M	\$119.6 M	\$148.3 M
FSRM	\$25.0 M	\$30.0 M	\$30.0 M
Environmental	\$30.5 M	\$31.0 M	\$28.0 M
Military Total	\$342.5 M	\$174.6 M	\$206.3 M

Environmental

Cannon AFB, NM
 Holloman AFB, NM
 Kirtland AFB, NM
 Ellsworth AFB, SD
 Nellis AFB, NV
 FUDS (SPA & SPL)
 NALEMP (Tribal)
 White Sands Missile Range, NM
 Yuma Proving Ground, AZ
 Ft Bliss, TX
 Ft Carson, CO

MILCON / FSRM

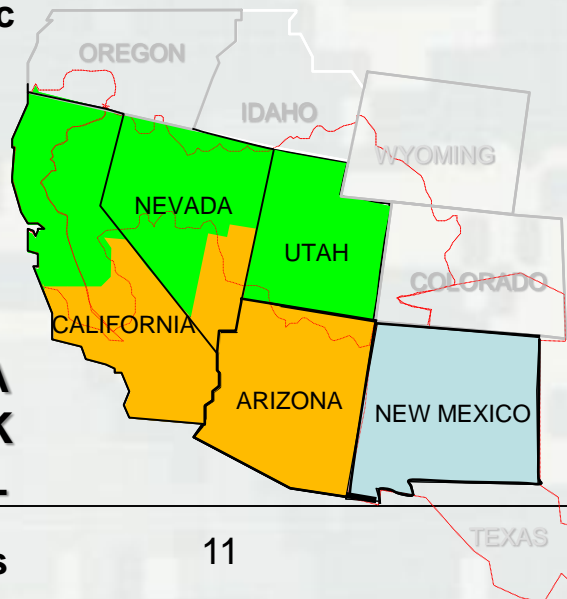
Cannon AFB, NM
 Holloman AFB, NM
 Kirtland AFB, NM
 Davis-Monthan AFB, AZ
 Nellis AFB, NV
 Luke AFB, AZ

Signature Projects

- FY10-14 KAFB Bulk Fuels Facility Remediation
- FY11 HAFB UAS Maintenance Hangar
- FY12 CAFB SOF Maintenance Hangar/AMU
- FY12 CAFB 3rd/33rd Squad Operations Facility
- FY12 KAFB Nuclear Weapons Sustainment Facility
- FY13 CAFB Replace Medical/Dental Clinic
- FY 13 HAFB MQ-9 Maintenance Hangar



▶ SPA
▶ SPK
▶ SPL



IIS MISSION

Obligations	FY12	FY13	FY14
DOE (NNSA)	\$0.2 M	\$15.0 M	\$20.0 M
DHS (CBP, ICE)	\$64.1 M	\$10.0 M	\$8.0 M
DOI (BIA)	\$0.05 M	\$2.0 M	\$0.5 M
Other	\$0.01 M	\$0.05 M	\$0.1 M
IIS Total	\$64.4 M	\$27.0 M	\$28.6 M



Signature Projects

NNSA/LANL Support

Clint Border Patrol Station, TX

Lordsburg Border Patrol Station, NM

ICE Co-location Facility, TX

Antelope Wells LPOE & FOB, NM

Animas FOB, NM

El Paso Sector R&A , TX



Points of Contact

District Commander

LTC Patrick Dagon (505) 342-3431

Patrick.J.Dagon@usace.army.mil

Deputy District Engineer for Programs and Project Management

John D'Antonio (505) 342-3261

John.R.D'Antonio@usace.army.mil

Operations Division

Mark Yuska

(505) 342-3608

Mark.E.Yuska@usace.army.mil

Regulatory Division

Allan Steinle

(505) 342-3282

Allan.E.Steinle@usace.army.mil

Military and IIS Project Management

Michael Goodrich

(505) 343-6290

Michael.T.Goodrich@usace.army.mil

Civil Works Project Management

Jerry Nieto

(505) 342-3362

Jerry.D.Nieto@usace.army.mil

Tribal Nations Technical Center of Expertise

Ron Kneebone

(505) 342-3355

Ronald.R.Kneebone@usace.army.mil

Native American Lands Environmental Mitigation Program Manager

Monika Sanchez

(505) 342-3250

Monika.Sanchez@usace.army.mil

Emergency Management (flood fight)

Jeffrey Daniels

(505) 342-3383

Jeffrey.A.Daniels@usace.army.mil



The San Francisco District

Our History: Oldest USACE district on the Pacific Coast, with service to the Nation since 1866.

Our Area: A 40,000 square mile area comprising 900 miles of shoreline, 3 coastal watershed sub-regions, the largest estuary on the Pacific Coast, and a population of over 6.5 million people.

Our Mission: To deliver vital engineering solutions to secure our Nation, energize our economy, and reduce risk from disaster. We are also committed to fiscal responsibility and environmental stewardship.

Our Work: We are a project-funded organization responsible for the delivery of military and civilian Federal projects. In Fiscal Year 2012, we executed a \$100 million program with over 150 active projects.

Our People: We have a talented and diverse workforce of 300 employees, both military and civilian.



Area of Responsibility

Area: 40,000 square miles, comprising 900 miles of shoreline, 3 coastal watershed sub-regions and the largest estuary on the Pacific Coast.

Population: Over 6.5 million people, centered around San Francisco, Oakland, and San Jose.

Economy: The region has a GDP of \$535 billion (ranking 17th internationally), with a \$68.1 billion annual maritime industry. The region includes Silicon Valley, Napa and Sonoma Valleys, and Fortune 500 companies from the technology, biotech, energy, and construction industries.

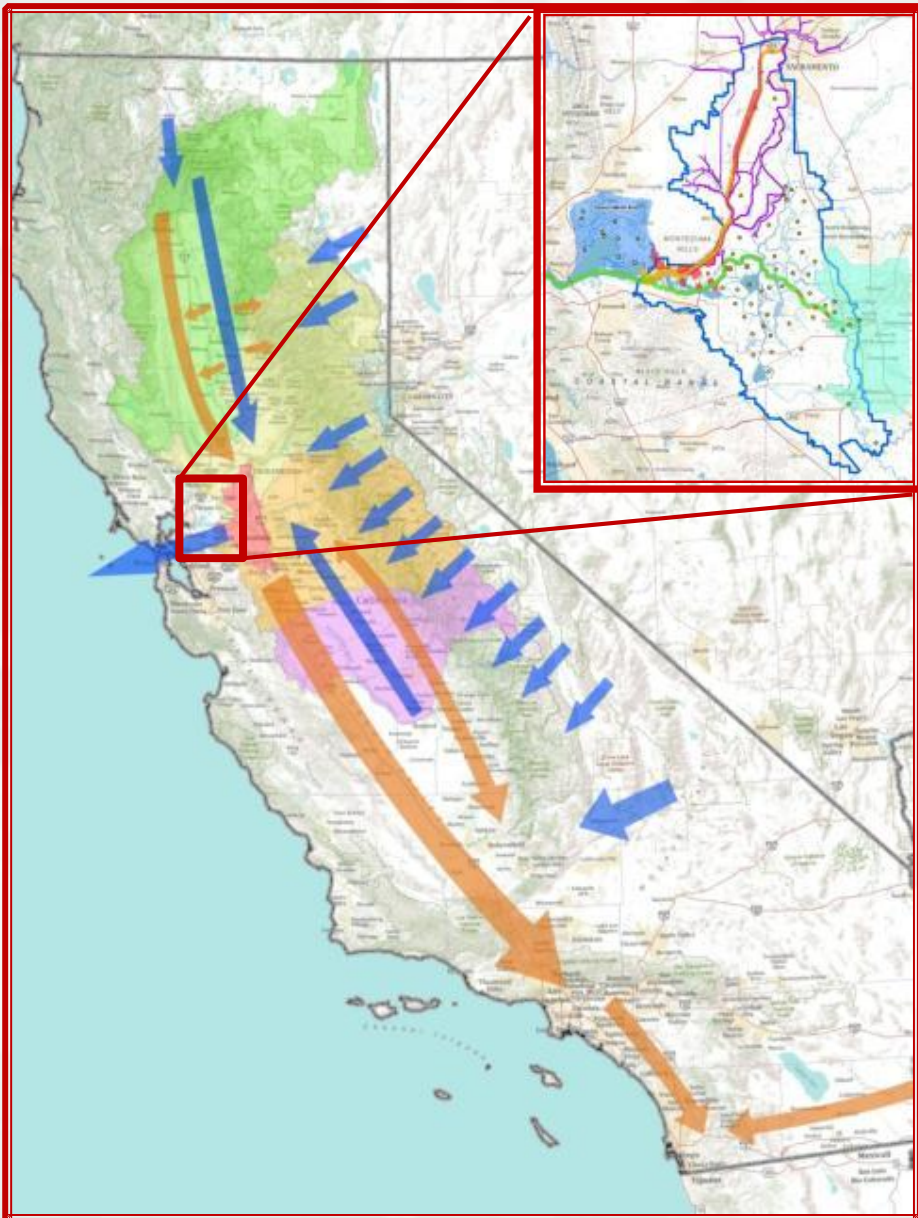
Environment: The region has a Mediterranean to temperate climate; seasonal (Nov-May) rains ranging from 100"/year in north to 20"/year in south causing seasonal floods (prone to forest fires in dry season); large area of seasonal and tidal wetlands; seismic activity (earthquakes); and approx 300 species listed as endangered or threatened.

Federal Government Mission Coordination: EPA Region 9, FEMA Region X, USFWS, NOAA (Weather, Fisheries, and Oceans), U.S. Coast Guard-San Francisco Sector, et al.

Elected Officials: 25 Members of the U.S. Congress (4 Senators and 21 Representatives)



California Water & the Delta



Delta Importance

- Sustains \$400 billion economy
- Largest single drinking water source in the Nation; supplies 25M people
- Irrigation for 7 million acres
- 750 Plant and wildlife species (55 classified under Endangered Species Act)
- Delta outflow controls tidal salt water intrusion from San Francisco Bay

District Locations



Supporting the Warfighter



▪ Voluntary Overseas Deployments

- ▶ Global War on Terrorism
 - Over 30 district employees have deployed overseas in support of our Nation's Global War on Terror.
 - 8 employees (3% of our workforce) are currently deployed to Afghanistan.
- ▶ Other COCOM Support
 - An employee deployed to Brazil in support of SOUTHCOM to provide technical assistance on that country's riverbank restoration work.
 - An employee volunteered on his personal time for a mission to Nepal to build a sustainable drinking water system in the town of Basa.
 - The district's dive team deployed to Okinawa to provide underwater assessments of U.S. Naval port facilities.



▪ Infrastructure

- ▶ Completed construction of a \$76 million U.S. Army Reserve Center at Moffett Field (near San Jose).

▪ Support to our Veterans and Service Members

- ▶ Providing design assistance, contract administration, construction management services, and project management services for 6 new and/or renovation projects valued at \$50.8 million for the Veterans Affairs hospitals in the greater Bay Area.
- ▶ Partnered with 249th Engineer Battalion (Prime Power) to provide 9 Soldiers with quality assurance and high-voltage electrical training experience through 8 week rotations at our Veterans Affairs Electrical Upgrade Project.
- ▶ Our MV Dillard crew has partnered with Monterey Bay Veterans, Inc to provide Disabled Veterans and Wounded Warriors with maritime-related education events.
- ▶ Future employment of Wounded Warriors during their recovery and/or transition phase of rehabilitation treatment.



Value to the Nation: Reducing Flood Risk

- **Region prone to seasonal flooding**
 - ▶ Vignette: City of Guerneville, CA along Russian River
- **Other factors**
 - ▶ Subsidence
 - ▶ Drought
 - ▶ Seismic activity
 - ▶ Sea level rise
 - ▶ Endangered Species Act consultations
- **Coyote Valley Dam (Lake Mendocino)**
 - ▶ Dam: 160 ft high and 3,500 ft long
 - ▶ East Fork of Russian River
- **Warms Springs Dam**
 - ▶ Dam: 319 ft high and 3000 ft long
 - ▶ Dry Creek Tributary of Russian River
- **Levee Inspection Program**
 - ▶ Annual Inspections
 - ▶ Quarterly Workshops with Owners



Value to the Nation: Disaster Response

▪ District Capabilities

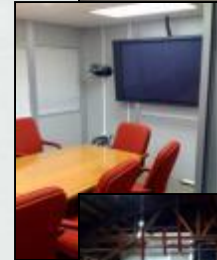
- ▶ District Emergency Operations Center in Sausalito – 24/7 capability
- ▶ Command and Control Vessel (MV Dillard)
- ▶ Commodities Team (National Asset; 1 of 7 in USACE) – procurement and distribution of ice and water
- ▶ Engineering Assessment Teams (Local Asset) – built as needed for post-disaster levee inspection.

▪ Recent Deployment Support

- ▶ Mar 2011 – Japanese Tsunami (3 employees deployed)
- ▶ Jun - Aug 2011 – Missouri & Alabama Tornadoes (15 employees deployed)
- ▶ Aug 2011 – Lake Cochiti, NM Debris Removal (6 employees & 3 vessels deployed)
- ▶ Nov 2012 – Hurricane Sandy (3 employees deployed)

▪ Emergency Management Training

- ▶ Mar 2012 – Bay Area Community Challenge Table Top Exercise.
- ▶ Oct 2012 – SPN Crisis Management Team Table Top Exercise.
- ▶ 3x Annual Workshops with levee owners.
- ▶ Quarterly Port Readiness Coordination with USCG (lead), ports, and law enforcement.
- ▶ Semi-annual FEMA work shops.



Value to the Nation: Navigation

- Dredging and debris removal along 22 Federal ship channels
- Supports a \$68.1 billion annual maritime industry
- Comprises approx 2/3 of district's workload
- Remove 1400 tons of debris/year (average) from San Francisco Bay (only agency with mission)
- Challenges: significant environmental restrictions, and what to do with the dirt?



Value to the Nation: Environmental Restoration

Hamilton Wetlands Restoration

- ▶ 998 acre site on former Hamilton Airfield (military base closed under 1995 Base Realignment and Closure)
- ▶ Beneficially reused 6 million CY of material from Oakland Harbor 50-foot deepening project.



Bair Island Restoration (Wetlands)

- ▶ Successfully completed with beneficially reused dredged material from Redwood City channel dredging



Napa River Salt Marsh Restoration (Wetlands)

- ▶ Project to restore 2500 acres of 9800 acres of former

South San Francisco Bay Shoreline Study (Wetlands)

- ▶ Focuses on 2000 acre portion of 15,000 total acres of former commercial salt ponds

Russian River Projects (Endangered Fish & Habitat)

- ▶ 2001 – Central California Coast Coho salmon near extinction; last viable population at San Francisco District's Don Clausen Fish Hatchery
- ▶ 2002- Collaborative Dry Creek Habitat Restoration & Broodstock Program
- ▶ 2008 – “Jeopardy” Biological Opinion (BiOp) from Endangered Species consultation with NOAA-National Marine Fisheries Service (NMFS)



- ▶ 2012 – Designation by NOAA as a “Habitat Blueprint for Success”

Value to the Nation: Small Businesses

Contract Awards to Small Business

Category	FY12		Goal
	Amount	%	
Total District Awards	\$37,215,420		
Small Business	\$20,672,385	55.5%	32%
Small Disadvantaged Business	\$8,656,383	23.2%	15%
Women Owned SB	\$2,929,916	7.9%	5%
HUB Zone	\$5,105,497	13.7%	6.75%
Service Disabled Veterans	\$2,652,264	7.1%	3%
8(A)	\$7,363,128	19.8%	N/A



Legend
Met USACE Goal
Statutory Met or \geq 80% Goal
Statutory not Met or $<$ 80% Goal



Value to the Nation: Recreation and Outreach

▪ Lake Facilities

- ▶ Each has visitor centers, camping, boating, fishing, picnic sites, camping, and Native American cultural centers
- ▶ Excellent public safety record
- ▶ Lake Mendocino: 980,000 visitors annually
- ▶ Lake Sonoma: 480,000 visitors annually



▪ Bay Model Visitor Center

- ▶ Former scientific hydraulic tool, now the district's center for public outreach.
- ▶ Solar Power installed using American Recovery and Reinvestment Act funds; now the only USACE "NetZero" Energy facility in the region.
- ▶ Hosts foreign delegation visits, schools, local art festivals, and is a county headquarters for the California Coastal Cleanup each year.
- ▶ 150,000 visitors annually



▪ Special Events

- ▶ Americas Cup 2012-2013
- ▶ Annual San Francisco Fleet Week
- ▶ Golden Gate Bridge 75th Anniversary (2012)
- ▶ Port of San Francisco 150th Anniversary (2013)
- ▶ Wounded Warrior and Veterans Events

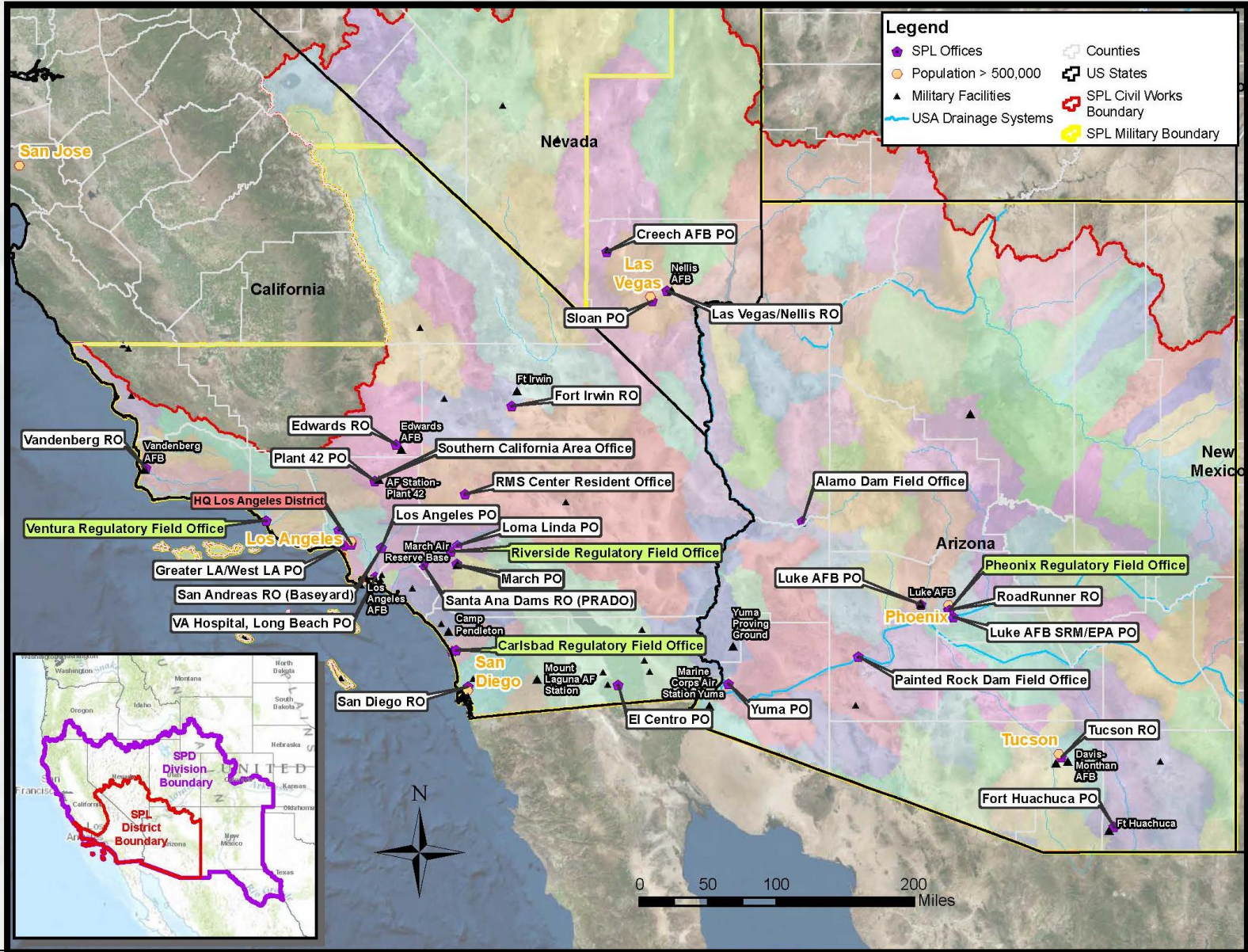


Value to the Nation: Preparing for Tomorrow

- **Science, Technology, Engineering, and Math (STEM) Outreach**
 - ▶ Vallejo High School (H.S.) Robotics Team (“Zombots”) – Dam outfall and toe drain inspections
 - ▶ Casa Grande High School (Petaluma, CA) – Russian River collaboration at state’s only H.S. fish hatchery
 - ▶ University of California Davis in SF Bay and in Russian River – Fish monitoring
- **Technical and Leadership Development**
 - ▶ Professional Licensure
 - ▶ Leader Development Program (3 levels)
 - ▶ USACE Emerging Leader Program
 - ▶ Monthly Technical Brown Bag Lunches
 - ▶ “Water Savvy” Book-of-the-Month Club
- **Teambuilding Activities**
 - ▶ Mentorship Program
 - ▶ Full service gym & “Run/Walk at Work” events
 - ▶ Holiday party, annual picnic
 - ▶ California Coastal Cleanup
 - ▶ Special Events (Americas Cup, Fleet Week, etc.)



Los Angeles District



CIVIL WORKS PROGRAM MISSIONS



- Navigation
- Flood Risk Management
- Ecosystem Restoration
- Hydropower
- Water Supply
- Regulatory (Wetlands / US Waters)
- Recreation
- Disaster Preparedness & Response

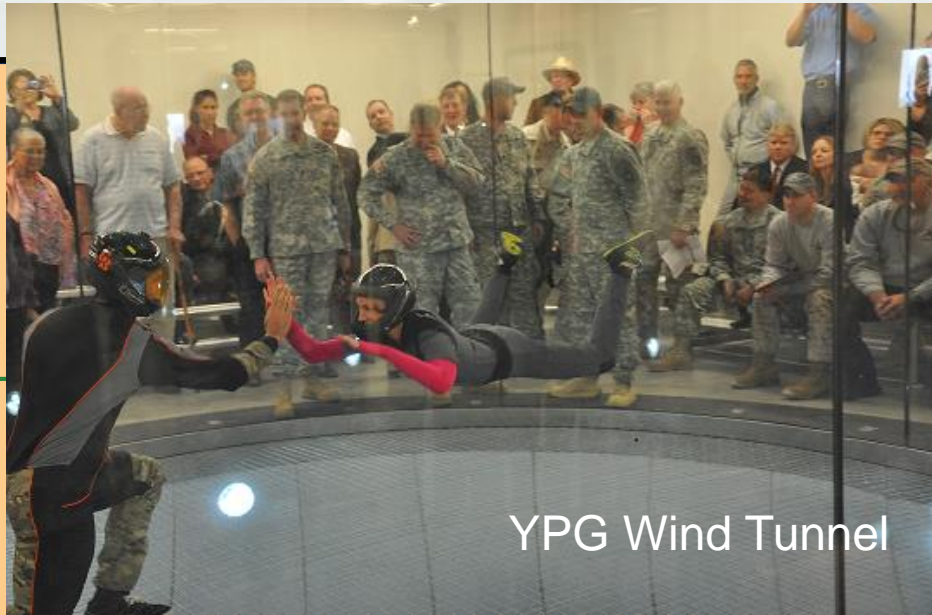


Los Angeles District Military Program

- Military Construction (Army, Air Force and other DoD Agencies)
- Environment (Formerly Used Defense Sites Program, munitions response, cleanup, and environmental quality support to active Army and Air Force installations)
- Installation Support (3 Army, 6 Air Force, 1 Air Reserve Base, DLA and Naval support agencies); Operations and Maintenance



Los Angeles District Military Customers

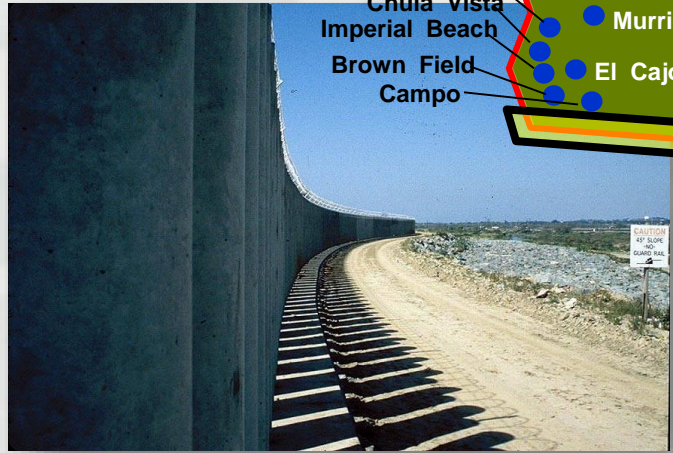


INTERAGENCY & INTERNATIONAL SUPPORT



- Border Patrol / Customs and Border Protection
- Bureau of Indian Affairs
- Bureau of Land Management
- Bureau of Prisons
- Department of Agriculture
- Drug Enforcement Agency
- Environmental Protection Agency
- Federal Emergency Management Agency
- Department of Homeland Security
- Food and Drug Administration
- International Boundary and Water Commission
- Veterans Affairs

San Clemente
Chula Vista
Imperial Beach
Brown Field
Campo



Los Angeles District Interagency & International Support (I&IS) Program

IIS mission is to create and maintain strategic relationships with domestic and international customers and partners. The I&IS program provides technical assistance to other non-DOD federal agencies, state and local governments, Indian Nations, private US firms and international organizations such as the International Boundary Water Commission (IBWC).



VA Loma Linda PET Scanner



US Customs & Border Protection Tucson Sector HQ Admin Bldg



IBWC Nogales, AZ, US/Nogales, Sonora, Mexico Flood Damage Reduction



EMERGENCY MANAGEMENT

Havasupai Technical Assistance Field Visit, October 2010

- Public Law 84-99
“The Flood Fight”

- Stafford Act

- ▶ Disaster Preparation
- ▶ Emergency Ops
- ▶ Rehabilitation
- ▶ Water Assistance
- ▶ Advanced Measures
- ▶ Hazard Mitigation



SPL 10 Year Response History



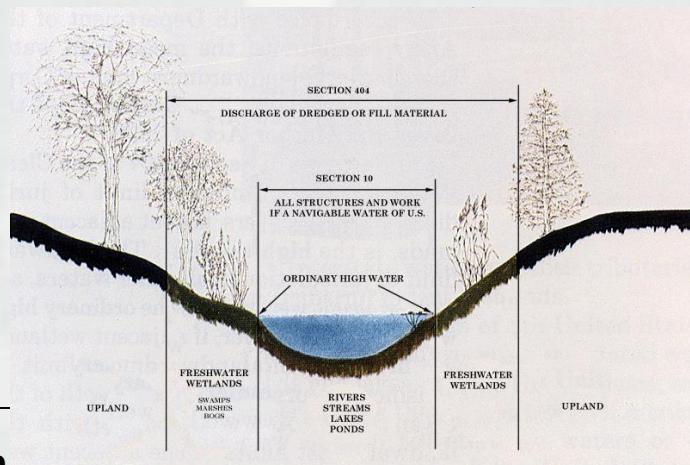
REGULATORY

Mission

- To protect aquatic resources
- To allow reasonable development
- To make fair, timely, and balanced permit decisions

Authorities

- **Sec. 10 Rivers & Harbors Act of 1899:** Any Structures/Work in or Affecting Navigable Waters (Pacific Ocean, harbors, tidal inlets/outlets, and Colorado River)
- **Sec. 404 Clean Water Act of 1972:** Discharges of Dredged or Fill Material into Waters of the U.S. (Navigable waters, tributaries, and associated wetlands)

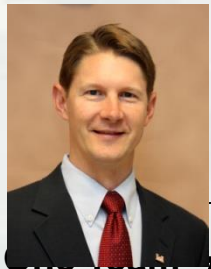


Los Angeles District



Command Team
Commander & District Engineer
 COL Kimberly Colloton, PMP

Deputy District Engineer for Project Management
 Mr. David Van Dorpe, P.E., PMP



Luke & Nellis AFB JSF (F-35) Program



Coastal Storm Damage Protection



Ecosystem Restoration



Mt Charleston, NV (Advanced Measures)



FSRM



VA Facilities Renovation

Long-Term Outlook

- **New Mission Joint Strike Fighter (F35)**
- **Flood Risk Management & Navigation Works**
- **Coastal Storm Damage Protection: San Clemente, Encinitas/Solana Beach, Pismo Beach**
- **Ecosystem Restoration: LA River, Arroyo Secco, Aliso Creek**
- **Emergency Repair Work: Military Installations/Advanced Measures; Breakwater Repairs**
- **Facilities, Sustainment, Restoration & Modernization (FSRM) (Air Force, Army & other Agencies)**



Navigation Repairs



Points of Contact

District Commander

COL Kimberly Colloton (213) 452-3961

Kimberly.M.Colloton@usace.army.mil

Deputy District Engineer for Programs and Project Management

David Van Dorpe (213) 452-3971

David.M.VanDorpe@usace.army.mil

Operations Division

Lillian Dampios

(213) 452-3125

Lillian.F.Dampios@usace.army.mil

Regulatory Division

Dave Castanon

(805) 585-2141

David.J.Castanon@usace.army.mil

Military Project Management

Debra Ford

(213) 452-3979

Debra.A.Ford@usace.army.mil

IIS Project Management

Gwen Meyer

(602) 230-6935

Gwendolyn.C.Meyer@usace.army.mil

Civil Works Project Management

Darrell Buxton

(213) 452-4007

Darrell.W.Buxton@usace.army.mil

Tribal Liaison

Quana Higgins

(602) 230-6905

Quana.N.Higgins@usace.army.mil

Planning Division

Eduardo Demesa

(213) 452-3783

Eduardo.T.Demesa@usace.army.mil

Emergency Management

Anne Hutton

(213) 452-3444

Anne.C.Hutton@usace.army.mil



Tribal Nations Program



National Tribal Nations Program

- Six Tribal Policy Principles:
 1. Recognition of Sovereignty;
 2. Government-to-government relationships with Federally recognized Tribes;
 3. Pre-decisional consultation;
 4. Fulfillment of the Trust responsibility;
 5. Protection of cultural and natural resources; and
 6. Promotion of tribal economic capacity building and self-reliance.
- Executive Order 13175, *Consultation and Coordination with Indian Tribal Governments*, 6 Nov 2000
- Presidential Memorandum, *Tribal Consultation*, 5 Nov 2009
- <http://www.usace.army.mil/Missions/CivilWorks/TribalIssues.aspx>



USACE Policy

- USACE will support Tribal self-determination, self reliance and capacity by:
 - ▶ (1) Partnering with Tribes on studies, projects, programs and permitting procedures will be supported and promoted to the extent permitted by law and policy,
 - ▶ (2) To the extent permitted by law and policy, provide information on opportunities to compete for requests for proposals or other potential contracts with USACE,



USACE Policy cont.

- ▶ (3) Sharing appropriate information on USACE programs, policies and procedures, and public documents,
- ▶ (4) Utilizing Tribal knowledge for planning purposes and to inform operational activities,
- ▶ (5) Supporting Tribal efforts to lease and operate water resource projects and lands, where appropriate,
- ▶ (6) Identifying and implementing, within existing authority, other capacity-building opportunities as they occur.



Tribal Partnership Program

- It's not Consultation

- It's Collaboration or Communication. To relay information regarding our authorities and appropriations to tribal governments
 - ▶ Project Partnering Kit-IWR Report # 96-R-10
 - ▶ How to Plan a Water Resources Project with the USACE
 - ▶ USACE: Water Resource Authorizations, Appropriations, and Activities (CW Primer)- July 1, 2014



Tribal Interests and the Tribal Partnership (Study) Program

- Tribal interests are not restricted to cultural resources and reburials (be aware of MLD issues in California)

- Agency collaboration with BIA to protect cultural or natural resources in historical territories

- For TPP, they may include:
 - ▶ Agency supplied information to consider the Tribal gov's next steps
 - Understanding state and local planning issues,
 - Consideration of impacts/access to indigenous plants,
 - Understanding role of BIA as a Tribal Trust Agency-their next move,
 - Access to ceremonial areas,
 - Strategic/legal considerations for water, mineral or other treaty rights concerns,
 - Other efforts with state or other federal agencies.



Active SPD TPP Studies

- FY 2009-2012 - **50% or more** of National TPP Appropriations went to SPD (SPA & SPL)

- Feasibility Studies
 - ▶ SPL
 - Tohono O'odham TPP Study

- Watershed Assessments
 - ▶ SPL
 - Torres-Martinez Watershed Assessment
 - ▶ SPA
 - Acoma Pueblo Watershed Assessment
 - Santa Ana Pueblo Watershed Assessment
 - San Felipe Pueblo Watershed Assessment
 - Santa Clara Pueblo Watershed Assessment
 - Santo Domingo Pueblo Watershed Assessment



Example: Tohono O'odham Section 203 TPP Feasibility Study

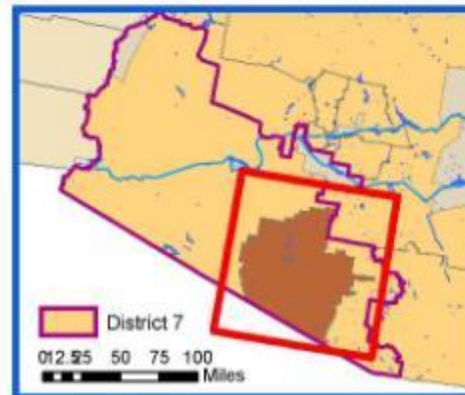
Flood risk management study

The Tohono O'odham Reservation is larger than Connecticut. Their traditional lands extend into Mexico.

Estimated Population 2009: 11,000 (enrollment approximately 24,000)

Per Capita income approximately \$8,000. Members receive \$2,000 per year from casino income.

41.7% of all households are below the poverty level.



Tohono O'odham Villages are subject to damages from flash flooding



Example: Torres-Martinez Tribe TPP Section 203 Watershed Assessment

- The tribe has worked with CVWD and EPA to develop wetlands at mouth of Salton Sea
- Main Concerns:
 - ▶ Impaired groundwater and surface water quality
 - ▶ Unknown floodplains and flood risks
 - ▶ Impacts to and preservation of cultural resources
 - ▶ Maintaining avian and wetland habitats



IIS & Tribal Program

- IIS provides services to any Federal or State agencies, including EPA and BIA. IIS may use a 3rd party Tribal representative for any project, allowing transparency and the potential to grow the Tribal Support Program.
- IIS & Tribal Program Example Projects include:
 - ▶ Northeast Church Rock Relocation Project – Navajo Nation
 - ▶ Bureau of Indian Affairs partner schools – Tribes of Northern Arizona



IIS & Tribal Program Project: Northeast Church Rock (NECR)

USACE IIS and EPA agreement to provide support to EPA in providing voluntary alternative housing to Navajo Families of the Red Water Pond Community.

- Although residential structures are not contaminated, on-site workers, noise, and generated dust by heavy equipment pose a significant disruption during the Eastern Drainage clean-up activities of Northeast Church Rock and Quivira Mine.
- Involving 11 Residences consisting of 75 people (50 adults, 25 children) of the Navajo Nation.
- Voluntary flexible housing options include:
 - Rental Units
 - Hotels
 - Buying Existing Houses
 - Mobile Home Park
 - Site Build at nearby locations
- Building 3 new homes within the next month



Emergency Management

- Authorities under Response and Recovery Assistance (PL 84-99) available to tribes, treated as individual states
 - ▶ Advanced Measures
 - ▶ Flood Fighting
 - ▶ Post-Flood Response
 - ▶ Emergency Water
 - ▶ FCW Rehabilitation
 - ▶ Drought Assistance

No Presidential Disaster Declaration required!



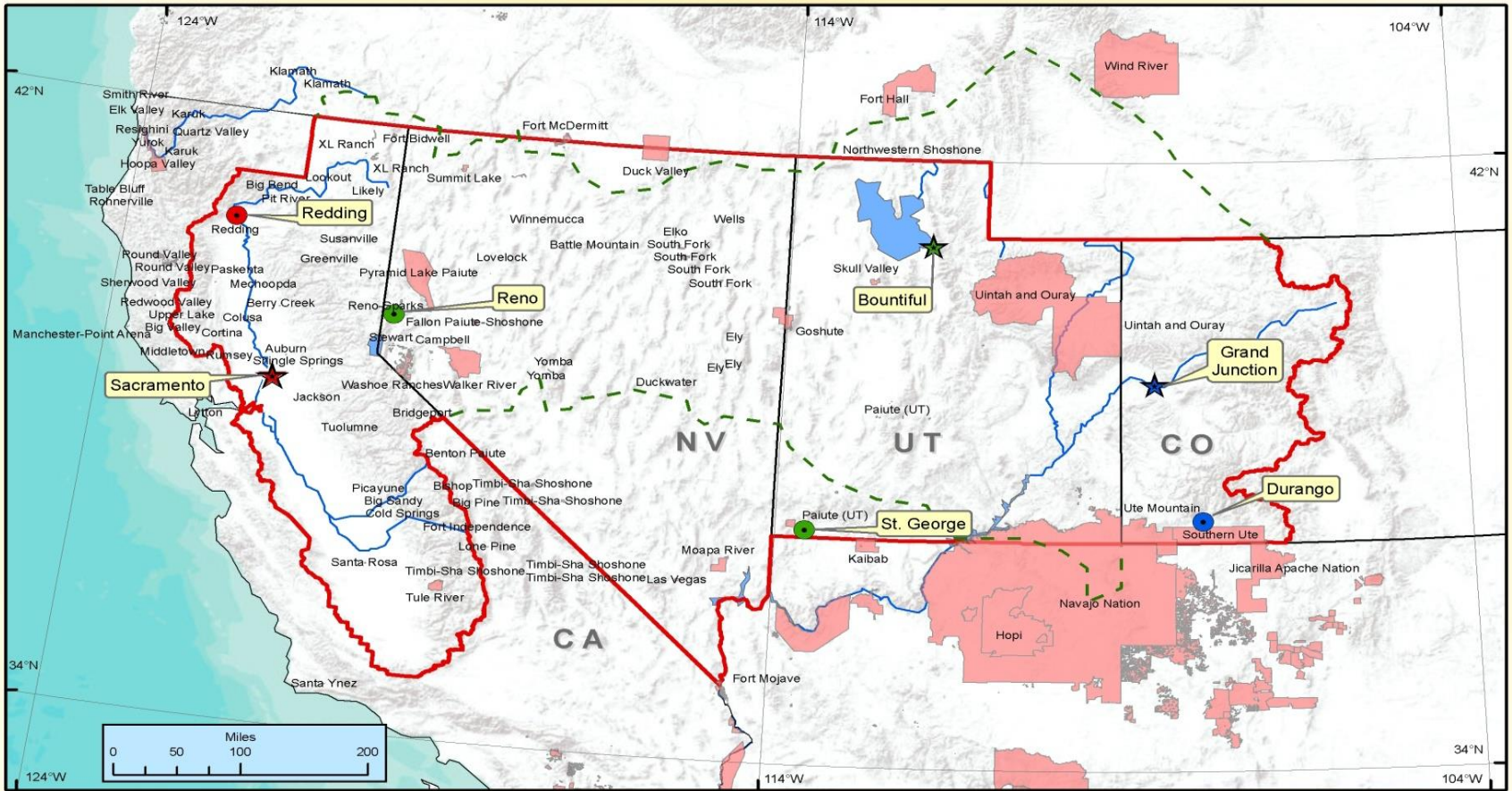
Regulatory

- PMs serve as Regulatory POC for local Tribes within their AOR
- Field Offices (Redding, Reno, St. George, Durango) coordinate with the AOR tribes
- PMs use QMS 12972-Tribal Coordination letter

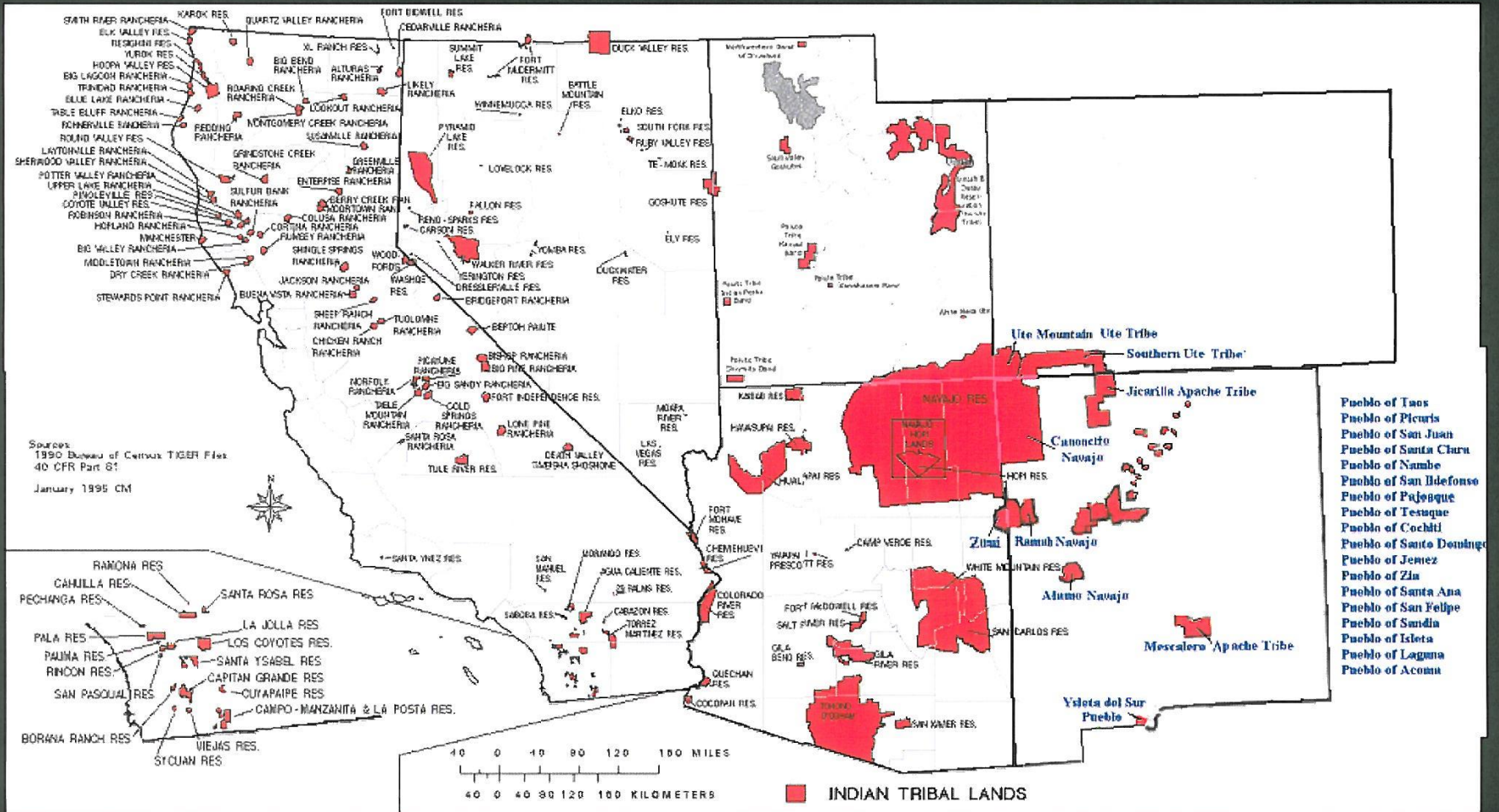
- SPK TL assists PMs on tribal consultations
 - ▶ Provides guidance on interactions with tribes
 - ▶ Facilitate/participate on G2G consultations for permit actions with tribal impacts or concerns.

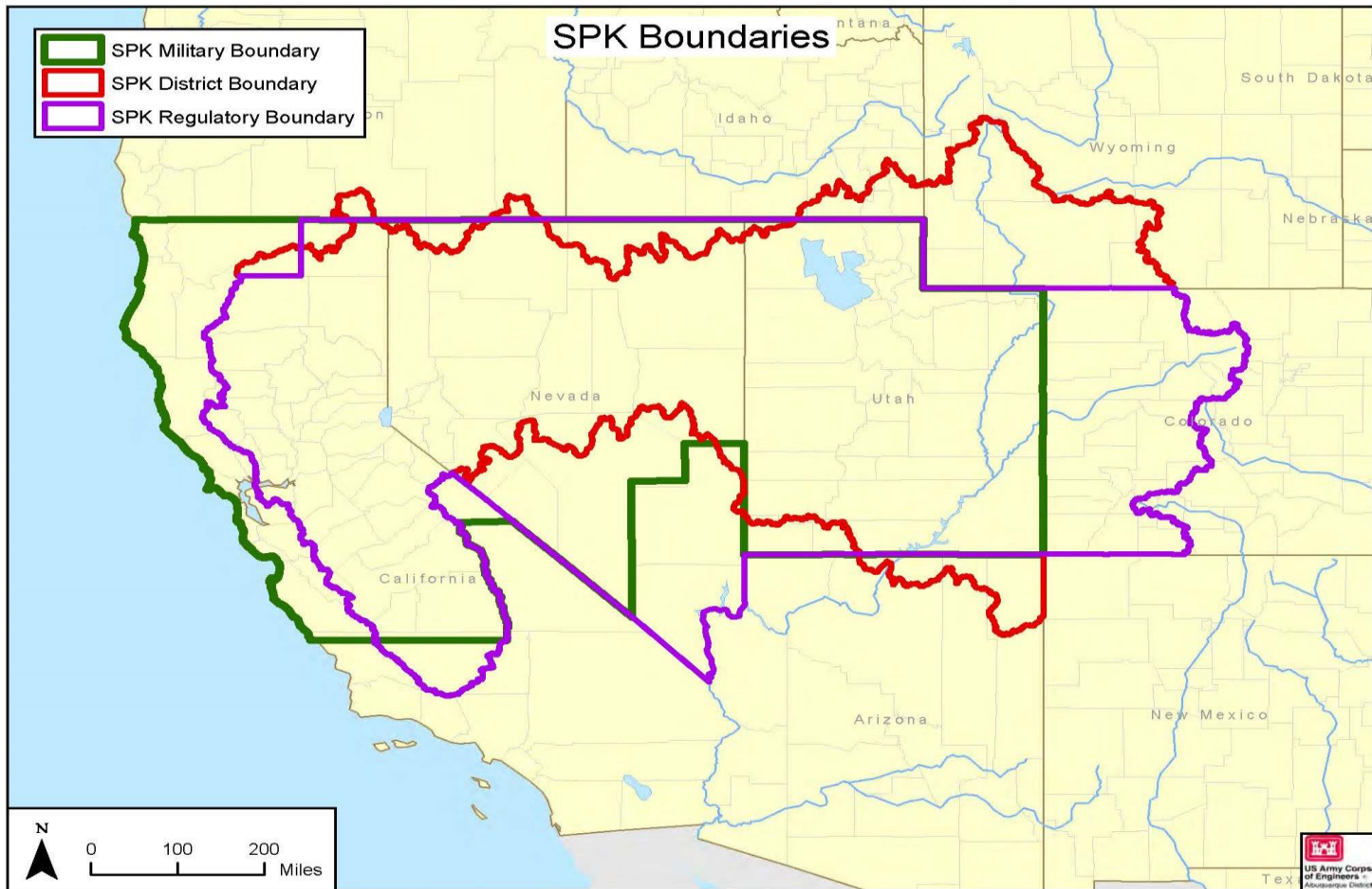


Indian Nations Within SPK, USACE



Tribal Governments





56 federally-recognized Tribes within CW (District Boundary)

note: Navajo Nation MOA with SPA

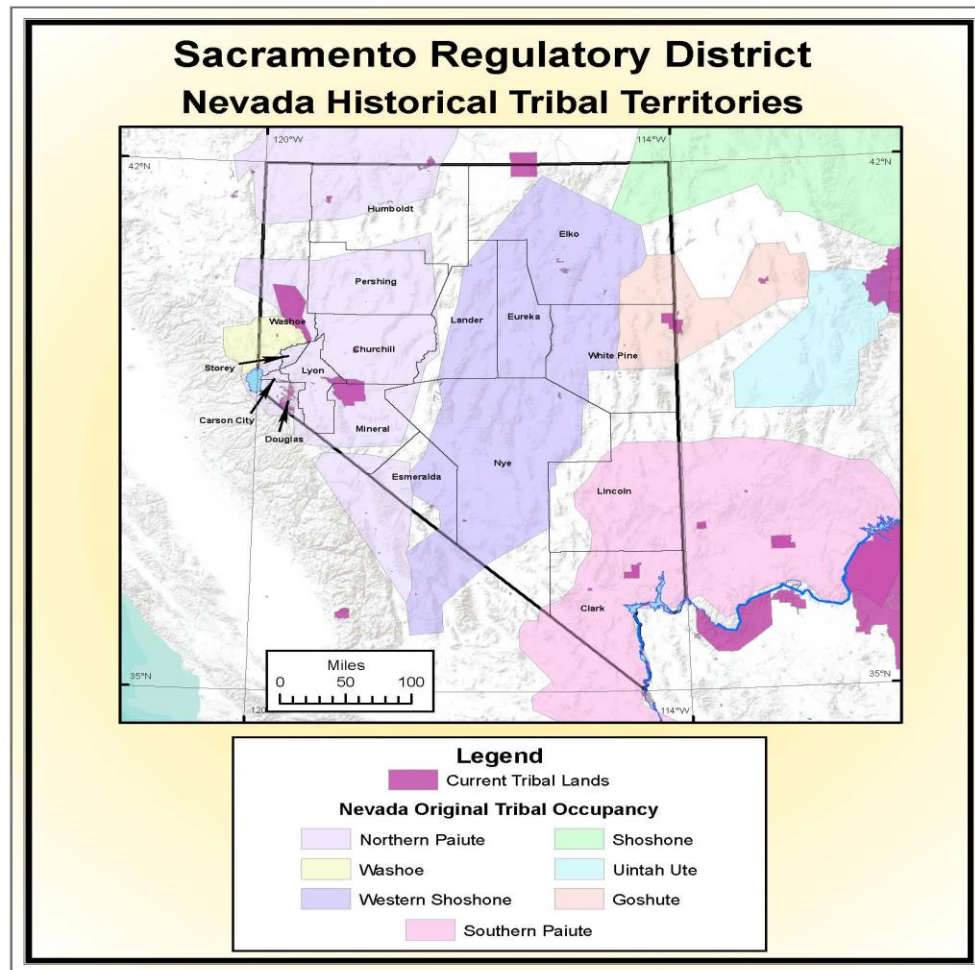
60 federally-recognized Tribes within RD Boundary: (-) Duck Valley Sho-Pai, (+) Kaibab Band in AZ strip.

88 federally-recognized Tribes within Military Boundary

90 federally-recognized Tribes-all boundaries combined



Tribal Territories in Nevada

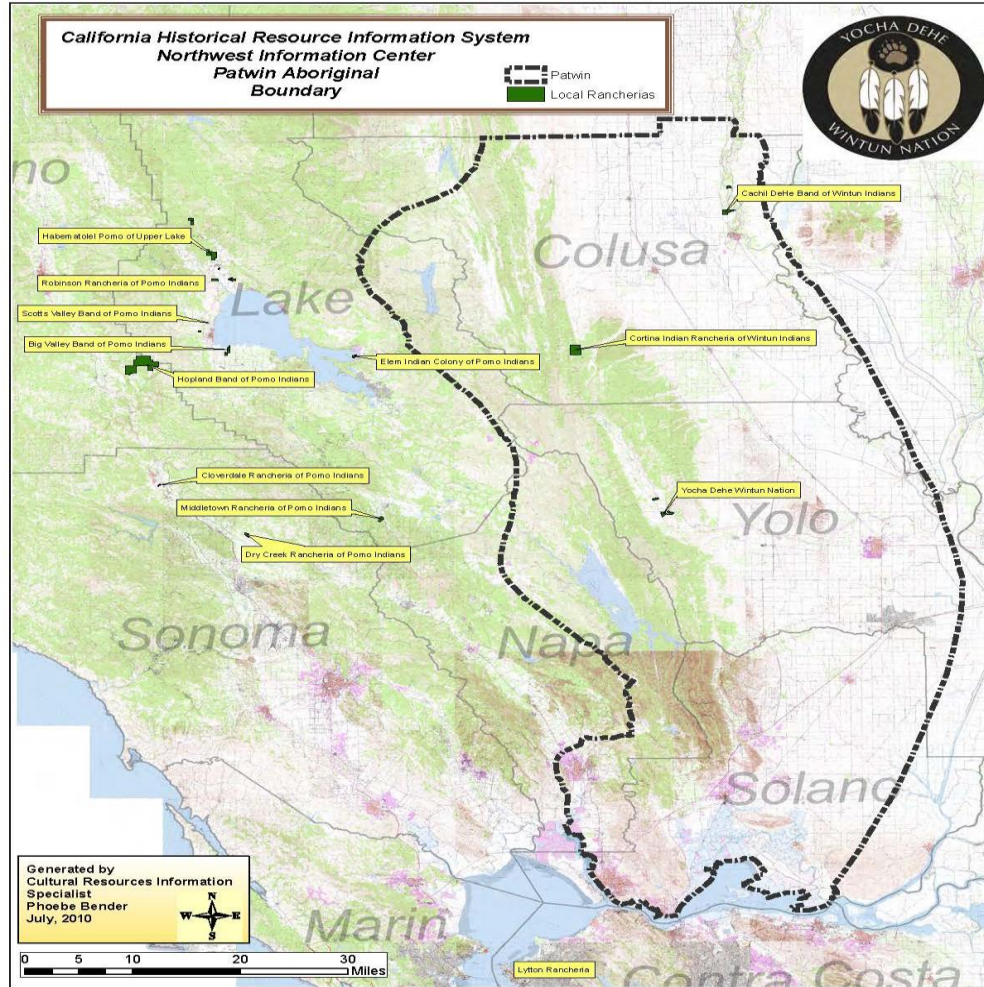


US Army Corps of Engineers
Sacramento District

BUILDING STRONG®



CA Tribal Territory Map



SPK Tribal Team

- District Tribal Liaison - Regulatory
- Tribal Outreach Coordinator - Planning
- Archaeologists - Planning
- Inter-Agency and International Support (IIS)
- Emergency Management Office (EMO)



SPK Tribal Program: Vision

- Develop MOUs with Tribes
- Uphold Trust responsibility
- Partner opportunities under existing authorities and grow support of tribes through IIS
- Improve pre-decisional consultation
- Improve protection of natural and cultural resources
- Respond to tribal emergencies



SPK Tribal Resources

- SPK-District Tribal Nations Webpage:
<http://www.spk.usace.army.mil/Missions/TribalNationsProgram.aspx>
- SPK-Regulatory Webpage link:
<http://www.spk.usace.army.mil/Missions/Regulatory/Permitting/TribalConsultation.aspx>
- Tribal Contacts: R:\Tribal\Tribal Maps & Contacts\SPK_TribalContacts2014_banner.pdf
- SPK-District *Intranet*-Team Sites-Interacting with Tribal Nations:
<https://team.usace.army.mil/sites/SPK/tribal/default.aspx>
- Contact: Mark Gilfillan
District Tribal Liaison
400 Rood Avenue, Room 224
Grand Junction, Colorado 81501
970-243-1199 x-15
- Rhiannon Kucharski
Tribal Partnership Program Outreach Coordinator
1325 J Street, 10th Floor
Sacramento, CA 95814
916-557-7258



SPK Points of Contact

District Commander

COL Michael Farrell 916-557-7490

Michael.Farrell@usace.army.mil

Deputy District Engineer for Programs and Project Management

Tambour Eller 916-557-7490

Tambour.Eller@usace.army.mil

Operations Division

Randy Olsen

916-557-5275

Randy.P.Olsen@usace.army.mil

Regulatory Division

Michael Jewell

916-557-6605

Michael.S.Jewell@usace.army.mil

Military and IIS Project Management

Kristopher Hurst

916-557-7445

Kristopher.M.Hurst@usace.army.mil

Civil Works Project Management

Nicole Ortega

916-557-7117

Nicole.Ortega@usace.army.mil

Tribal Liaison

Mark Gilfillan

970-243-1199 x15

Mark.A.Gilfillan@usace.army.mil

Emergency Management

Brigid Briskin

916-557-6918

Brigid.J.Briskin@usace.army.mil

Planning Division

Alicia Kirchner

916-557-6767

Alicia.E.Kirchner@usace.army.mil



Questions

WE THE PEOPLE
insure domestic Tranquillity, provide for the common
and our Posterity, do ordain
and establish this Con

