

# Remarks by WRP Co-Chairs

- **Mr. Justin Harding**  
Chief of Staff (for Utah Governor Gary Herbert)
- **Mr. Tad Davis**  
Principal Deputy Assistant Secretary of Defense for Energy, Installations and Environment (for Mr. Lucian Niemeyer, Assistant Secretary of Defense for Energy, Installations and Environment)
- **Mr. Brian Steed**  
Deputy Director, Programs and Policy, Bureau of Land Management (for Assistant Secretary for Lands and Minerals Management, U.S. Department of Interior)



# Welcome!



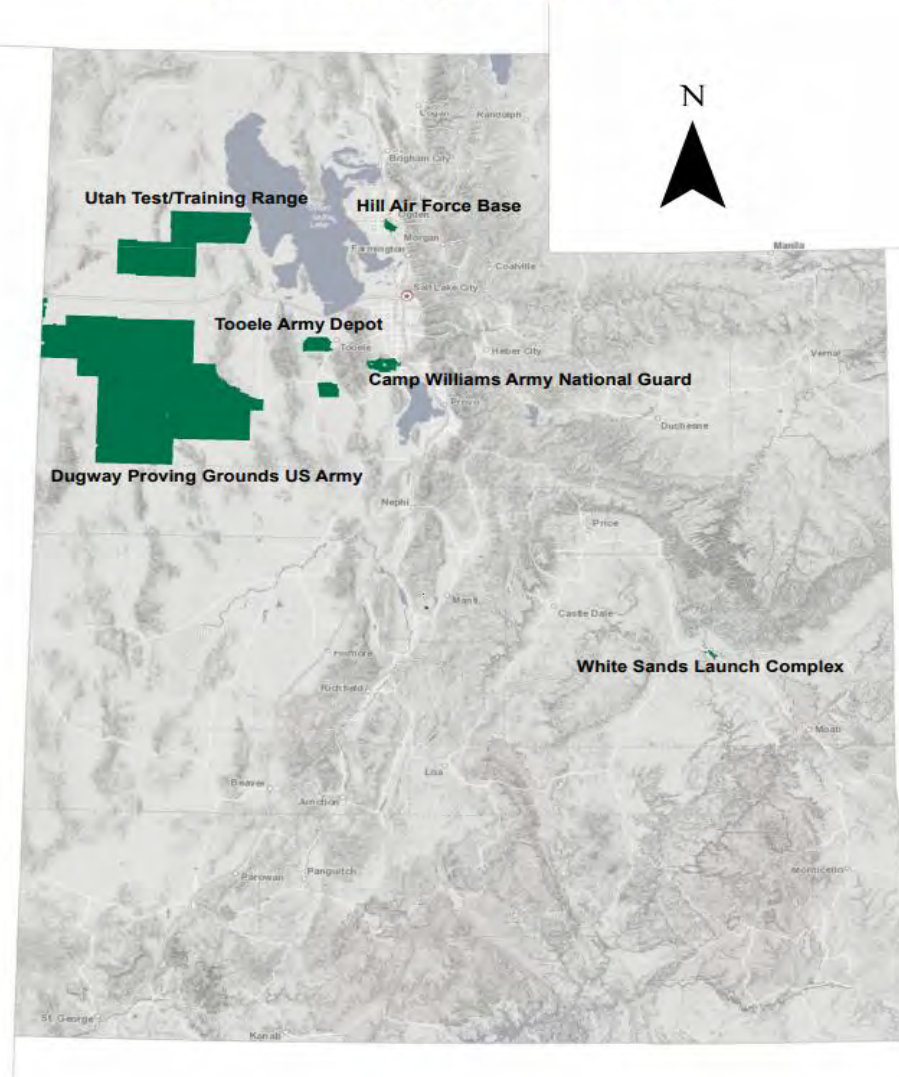
Justin Harding  
Chief of Staff  
Utah Governor Gary R. Herbert

# WRP matters



Western Regional Partnership Principals' Meeting  
Salt Lake City, UT August 2016

# Utah Military Installations



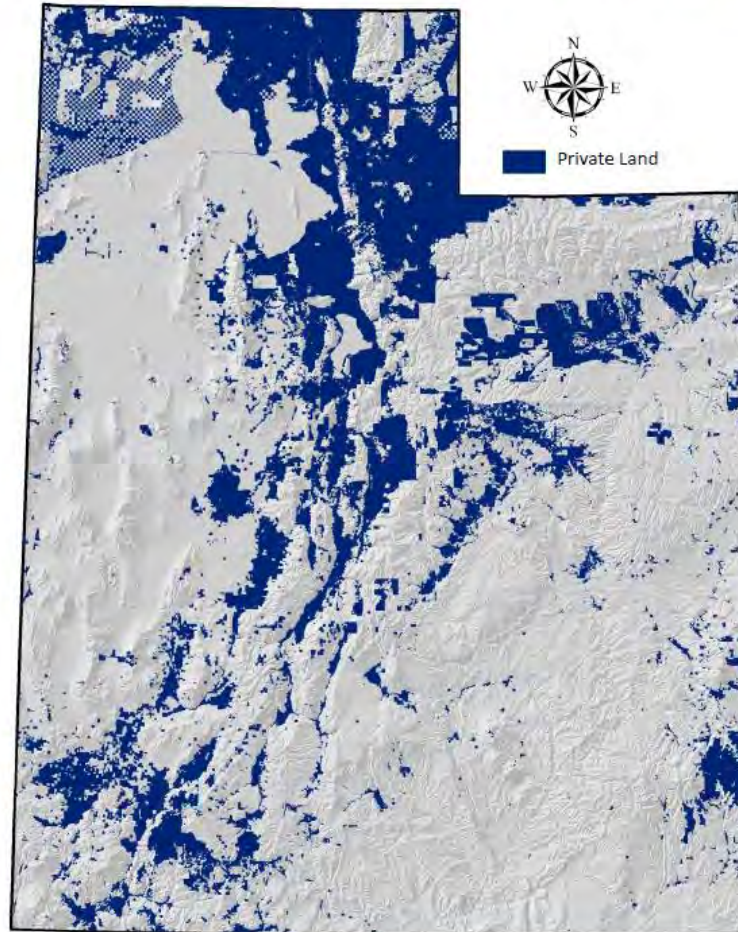


# Commanders Breakfast



# Private Lands in Utah

Of the nearly 85,000 square miles of surface area in Utah, 17,884 miles are in private ownership – only 21%. The map below shows where the privately owned land is. The maps on the reverse page show the relative size of Utah and its 29 counties if they were condensed to include only privately owned land.



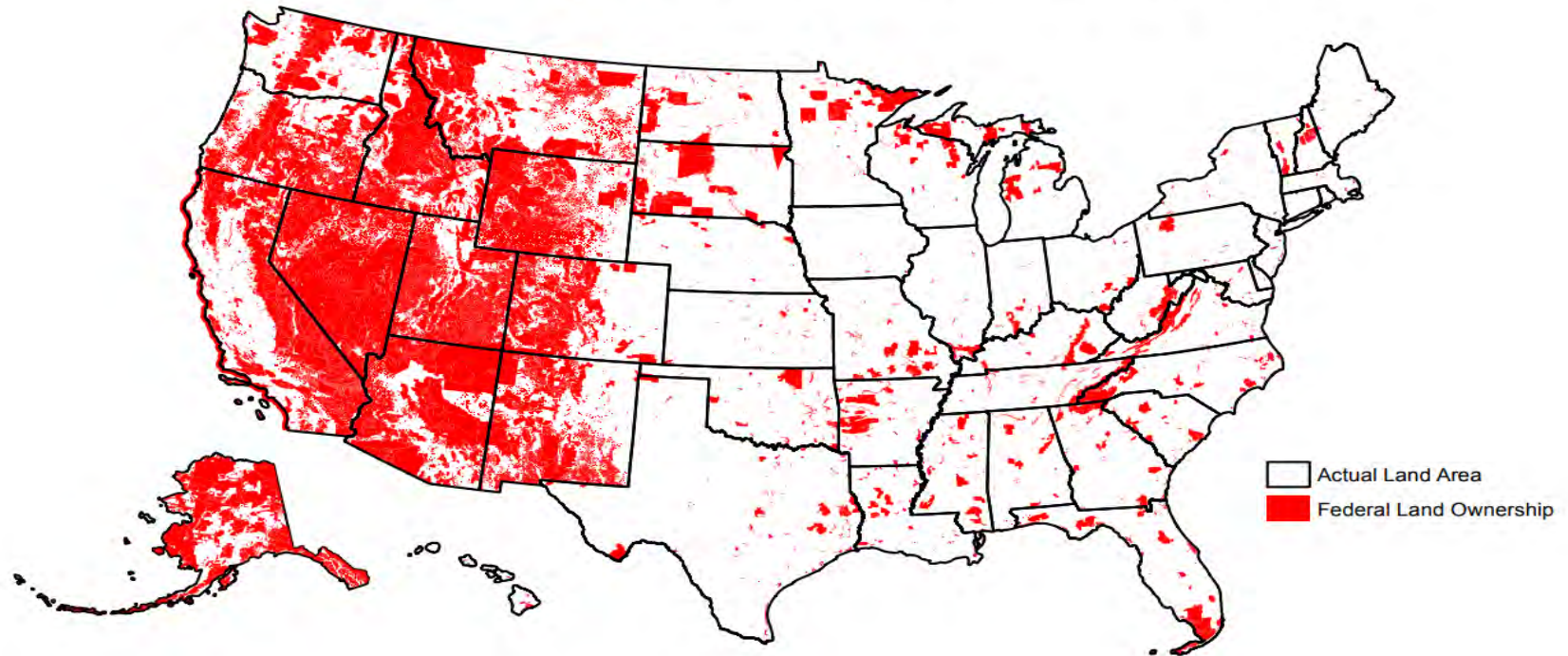
PRODUCED BY GOVERNOR GARY R. HERBERT'S OFFICE OF PLANNING AND BUDGET  
MIKE MOWER, STATE PLANNING COORDINATOR  
EVAN CURTIS, STATE AND LOCAL PLANNING PROJECT MANAGER

Data Source: Utah's State Geographic Information Database (<http://gis.utah.gov/sgid/>) Land Ownership layer as maintained by State and Institutional Trust Lands Administration (SITLA) Salt Lake City Utah: Winter 2011  
For Reference Use Only. Produced 2011, GOPB.





# Federally Owned United States



Based on percent of federal and tribal land area using ESRI Federal and Tribal Land Shapefile available at [http://www.baruch.cuny.edu/geoportal/data/esri/esri\\_usa.htm](http://www.baruch.cuny.edu/geoportal/data/esri/esri_usa.htm). For illustration purposes only. Not an official map.





# Remarks by WRP Co-Chairs

- **Mr. Justin Harding**  
Chief of Staff (for Utah Governor Gary Herbert)
- **Mr. Tad Davis**  
Principal Deputy Assistant Secretary of Defense for Energy, Installations and Environment (for Mr. Lucian Niemeyer, Assistant Secretary of Defense for Energy, Installations and Environment)
- **Mr. Brian Steed**  
Deputy Director, Programs and Policy, Bureau of Land Management (for Assistant Secretary for Lands and Minerals Management, U.S. Department of Interior)





# **WRP Overview and Steering Committee Recommendations**

---

NINTH WRP PRINCIPALS' MEETING



# WRP Timeline

Pre-WRP

2007

2009

2010

2011

2012

2014

2015

## Pre-WRP Principals' Meetings

- Internal DoD Meetings
- Udall Institute Survey & MCIWest Study

## Nov 2007 (AZ)

- 1st Principals' Meeting
- WRP concept was outlined and explored further through 6 committees

## March 31 - April 1 2009 (NV)

- Recommended Committees continue their efforts
- Established Interim Steering Committee

## Aug 2010 (NM)

- Adopted WRP Charter
- Adopted WRP Vision and Mission
- Established Steering Committee & Tribal Relations Committee

## Sept 2011 (UT)

- Restructured 7 Committees & 3 Subcommittees to 4 Committees to better align Committee Structure to WRP Mission

## Sept 2012 (CA)

- Well attended; Senior-level participants
- Many deliverables

## June 2014 (AZ)

- Revised WRP Vision Statement, Mission/Vision document, Charter & Committee restructure to 3 committees
- 8 reports with recommendations & collaborated on 2 landscape-level projects

## Aug 2015 (NV)

- Added CO to WRP Region; revised mission statement, charter, WRP logo, etc.
- Affirmed WRP Structure, Vision Statement, Goals, Tagline

## Aug 2016 (UT)

- 145 in attendance
- Keynote remarks by Utah Governor and UT Congressman Chris Stewart
- Around the Room Discussion on Land Management Issues; 4 plenary sessions



# WRP Vision and Mission

## WRP Vision

WRP will be a significant resource to proactively identify and address common goals and emerging issues and to develop solutions that support WRP Partners.

## WRP Mission

WRP provides a proactive and collaborative framework for **senior-policy level Federal, State and Tribal leadership** to identify common goals and emerging issues in the states of **Arizona, California, Colorado, Nevada, New Mexico and Utah** and to develop solutions that support WRP Partners and protect natural resources, while promoting sustainability, homeland security and military readiness.

# WRP Goals

(Per the Charter)

- **Serve as a catalyst** for improved regional coordination among State, Federal and Tribal agencies
- **Address common goals**, identify and solve potential conflicts and develop solutions that protect our natural resources, while promoting sustainability and mission effectiveness
- Provide a **forum for information exchange**, issue identification, problem solving and recommendations across the WRP region
- At annual Principals' meeting, **adopt strategic priorities** to complete in the subsequent year
- **Leverage existing resources** and linking of efforts to better support key projects
- Provide a GIS Sustainability Decision Support Tool that integrates appropriate Federal, Tribal, State, and other available data sources for use in regional planning by WRP Partners

# WRP Region's Uniqueness

- **Importance to the Military**

- Extensive Training Ranges, Premier Testing Facilities, Unmatched Military Air Space

- **Army:** ~55% of the Army's landholdings
    - **Navy:** Over 33% of Navy's landholdings
    - **Marine Corps:** 67% of Marine Corps' airspace  
85% of Marine Corps' Live Fire Ranges
    - **Air Force:** Includes four of the largest USAF range complexes - Edwards, Nellis/Creech/NTTR; Luke/Goldwater; and UTTR
    - 75% of DoD Special Use Airspace is located within the WRP Region

- **Significant amounts of Federally managed land**

- In WRP states, Federal land ranges from 34.1% - 84.9% of total state

- **Significant State Trust Landholdings**

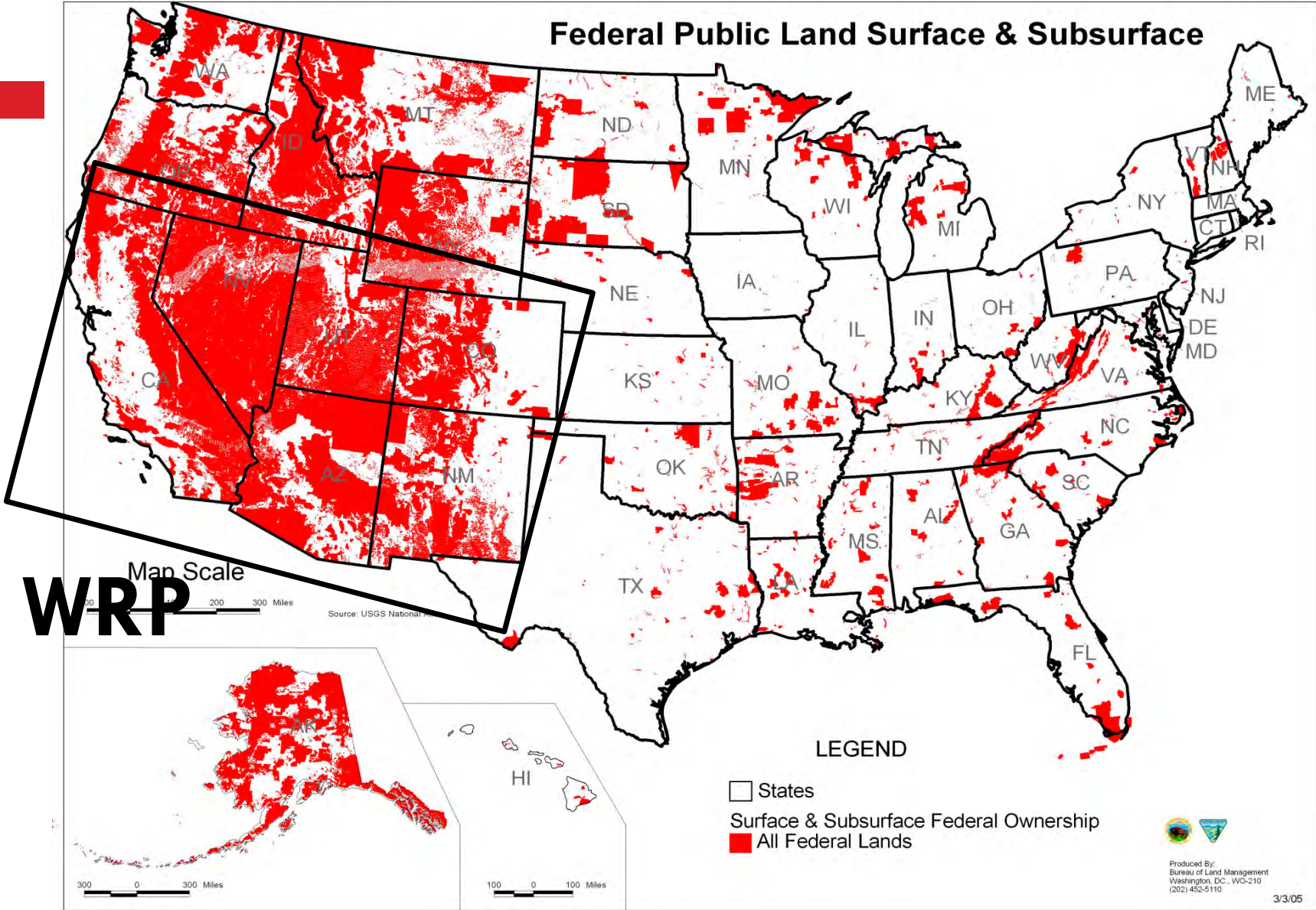
- **Approximately 172 Federally recognized Tribes**

State	% of Federal Public Land (not including DoD managed lands)	% of DoD Managed Land	% of Indian Trust Land	Private Land	State Trust Land	Size of State in square miles and ranking by area
Arizona	35.5%	6.6%	27.6%	17.5%	12.7%	114,000; 6 <sup>th</sup> largest state
California	40.2%	4.0%	.5%	50.3%	2.5%	160,000; 3 <sup>rd</sup> largest state
Colorado	38.9%	0.7%	1.1%	54.9%	4.4%	104,100; 8 <sup>th</sup> largest state
Nevada	78.8%	6.1%	1.42%	13.03%	.15%	110,561; 7 <sup>th</sup> largest state
New Mexico	29.7%	4.4%	10.2%	43.9%	11.6%	121, 593; 5 <sup>th</sup> largest state
Utah	63.6%	3.4%	4.5%	21%	7.5%	84,904; 13 <sup>th</sup> largest state

**These six states are home to 18% of the U.S. population and constitute 19% of the total land mass.**



# 88% of Federal Public Land is in the 12 most western states



# WRP Structure

## WRP Co-Chairs:



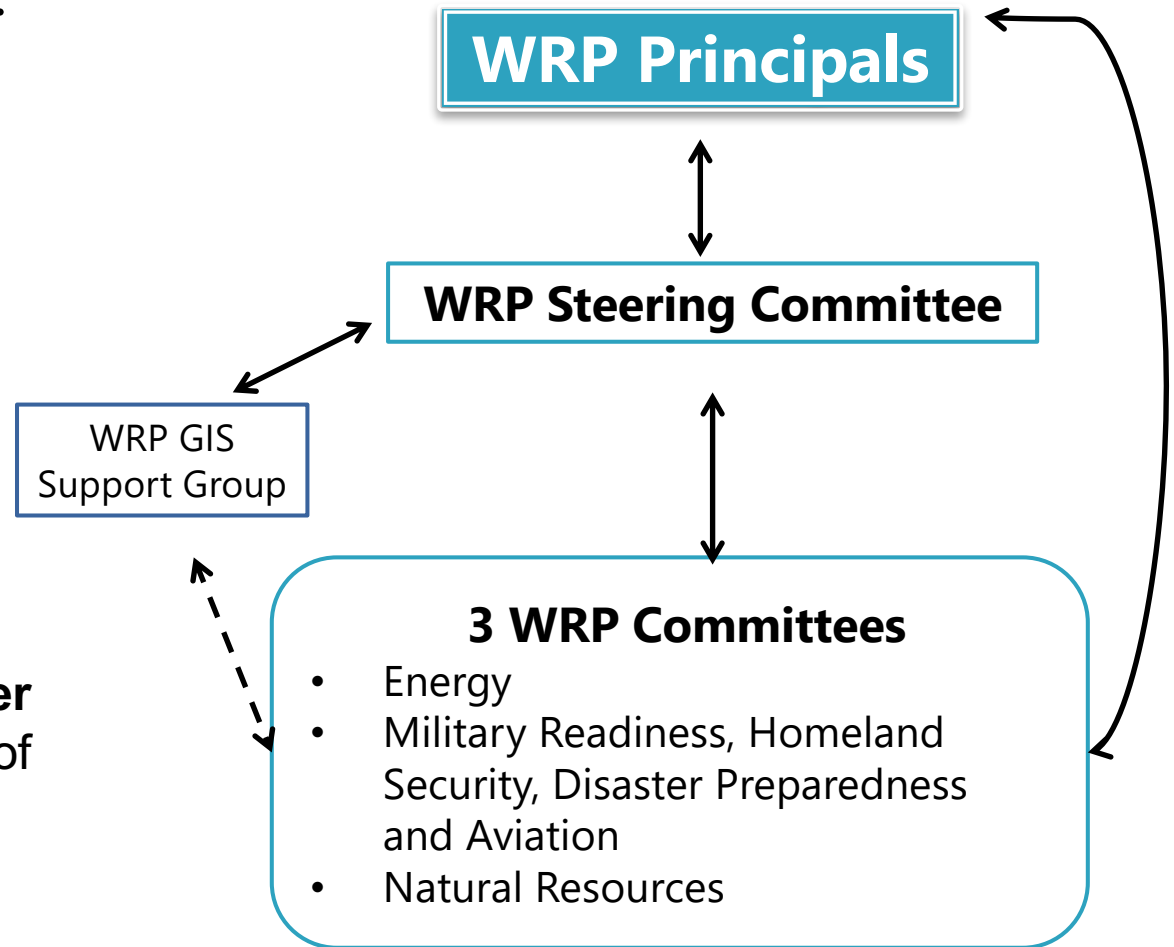
**Honorable Gary Herbert**  
Governor of Utah

*Awaiting US Senate confirmation*

**TBD**, Assistant Secretary for Land and Minerals Management, DOI



**Mr. Lucian Niemeyer**  
Assistant Secretary of Defense for Energy, Installations and Environment



# WRP Steering Committee



- Representatives of each of the six WRP States:
  - Arizona, California, Colorado, Nevada, New Mexico and Utah
- Bureau of Indian Affairs
- Bureau of Land Management
- Bureau of Reclamation
- Customs and Border Protection, U.S. Border Patrol
- Federal Aviation Administration
- Federal Emergency Management Agency
- Federal Highway Administration
- National Park Service
- Natural Resources Conservation Service
- National Oceanic and Atmospheric Administration
- Office of Secretary of Defense
- U.S. Air Force Headquarters
- U.S. Army
- U.S. Army Corps of Engineers
- U.S. Department of Energy
- U.S. Environmental Protection Agency
- U.S. Fish and Wildlife Service
- U.S. Forest Service
- U. S. Geological Survey
- U.S. Marine Corps Installations West
- U.S. Navy
- Native American Leadership:
  - Navajo Nation, Inter-Tribal Council of CA, Inc.
- Western Governors Association Liaison

# 2016-2017 Year in Review

- Much Change
  - New President and Administration
  - New WRP Principal Co-Chairs (DoI & DoD)
- Turnover
  - Only a few remain who were at the first WRP Principals' Meeting
  - Over half of the SC, Committee Co-Chairs & GIS liaisons became first involved in WRP after 2015
- WRP continues to have strong leadership – THANK YOU!
- Moved Principals' Meeting from August to November 2017



# WRP Ninth Principals' Meeting

## Items for Decision\*

**\*Final Decisions will take place during Nov 30 Business Session**

---

- 2017 WRP Charter and Vision and Mission Document
  - 2017-2018 WRP SC leadership
- 2017-2018 WRP Priorities
- Recommendations on WRP-GIS related focus areas
- Dates and Locations for 2018 and 2019 Principals' Meetings

Please reference document in your folders: Ninth WRP Principals' Meeting Key Decision Items

# WRP Charter

## Recommended Changes for 2017

---

- Changes the GIS-related goal to reflect current WRP focus
- Changes WRP Steering Committee (SC) leadership from a Chair and Vice-Chair to three Co-Chairs, one of whom is designated Lead Co-Chair
  - Aligns WRP SC leadership to WRP Principal Co-Chair leadership
  - Lead WRP SC Co-Chair serves for one year
- Enables the WRP SC to establish working groups to address strategic priorities adopted at a Principals' meeting that fall outside of existing committee structure or overlap committee jurisdiction.
  - The working group activities are to be limited in time and scope
  - SC will apprise the Principals of their activities at the following annual meeting
- Adds WGA to the list of WRP Principal Organizations (an oversight) and makes some minor administrative changes

# **WRP Vision and Mission**

**No changes recommended for 2017**

## **WRP Vision**

WRP will be a significant resource to proactively identify and address common goals and emerging issues and to develop solutions that support WRP Partners.

## **WRP Mission**

WRP provides a proactive and collaborative framework for senior-policy level Federal, State and Tribal leadership to identify common goals and emerging issues in the states of Arizona, California, Colorado, Nevada, New Mexico and Utah and to develop solutions that support WRP Partners and protect natural resources, while promoting sustainability, homeland security and military readiness.

# WRP Goals

(Per the Charter)

## Recommended changes for 2017

- **Serve as a catalyst** for improved regional coordination among State, Federal and Tribal agencies
- **Address common goals**, identify and solve potential conflicts and develop solutions that protect our natural resources, while promoting sustainability and mission effectiveness
- Provide a **forum for information exchange**, issue identification, problem solving and recommendations across the WRP region
- At annual Principals' meeting, **adopt strategic priorities** to complete in the subsequent year
- **Leverage existing resources** and linking of efforts to better support key projects
- **Identify geospatial requirements and leverage existing tools and resources to support WRP priorities.**

# WRP Vision/Mission document

## Recommended Changes for 2017

---

Removes reference of WRP Web Mapping Application, Regional Project Database, under “Access to Tools and WRP Deliverables”

- WRP no longer has WRP WMA or RPD

# 2017-2018 WRP SC leadership

Recommended for 2017-2018

---

Three WRP Steering Committee Co-Chairs:

1. State: Ryan McGinness (Lead Co-Chair)
2. DoD: Kristin Thomasgard-Spence
3. DOI: Casey Hammond





# **WRP 2017 Regional Assessment**

# 2017 Regional Assessment



## Survey WRP Partners:



- Top 3 WRP-relevant issues within the region
  - e.g. land use issues, airspace, water, etc.



- Top 3 needs
  - e.g. better awareness of upcoming agency changes or efforts, etc.



- Significant state/regional planning efforts
  - Expected to occur 2017-2020 and potential collaboration opportunities



- Authoritative data layers/web mapping services
  - To assist with Partners' efforts and for use in regional planning

Survey distributed to WRP SC and Committee Members to coordinate response through their agency

# 2017 Regional Assessment

(continued)



## Further Examined:

- Survey results on Partners' top issues and needs; focusing on:
  - Energy & Infrastructure
  - Species
  - Airspace
- Conducted 16 webinars dedicated to a single subject to more fully explore Regional Assessment



# 2017 Regional Assessment

(continued)



## **DRAFT Report includes:**

- Quantitative survey results of “top” Partner issues and needs in WRP Region
- Relevant Committee exploration of survey results on top issues and needs
- Identification of state and regional plans to commence in 2017-2020
- Identification of authoritative GIS data layers or web mapping services supporting WRP planning efforts and initiatives
- Further recommendations for WRP Principals’ consideration at the Ninth WRP Principals’ Meeting of identified gaps and possible focus areas that would lead to possible solutions



## **SURVEY RESULTS:**

Top three issues, as ranked,  
for which WRP may assist to facilitate a solution

<b>Ranking</b>	<b>Score (1-5)</b>	<b>Issue</b>	<b>Details</b>
<b>1</b>	4.45 (18 identified as top priority)	<b>General Partnering/ Relationship Building</b>	<ul style="list-style-type: none"><li>• Improving information and data exchange, tribal engagement, and state-federal relations to better facilitate partnering/relationship building.</li><li>• Issues of specific coordination also included: disaster planning/fire response and cybersecurity.</li></ul>
<b>2</b>	3.87 (6 identified as top priority)	<b>Land Use (Regional, Landscape Focus)</b>	<ul style="list-style-type: none"><li>• Better coordination on land use planning efforts, large-scale energy and infrastructure project planning/coordination, and</li><li>• Threatened and endangered species planning and proactive mitigation.</li></ul>
<b>3</b>	2.93 (4 identified as top priority)	<b>Airspace</b>	<ul style="list-style-type: none"><li>• Improved awareness and coordination on future military requirements, unmanned aircraft systems (UAS), and</li><li>• Airspace usage (better coordination and awareness of changes in designations, policy and potential land use impacts).</li></ul>

## **SURVEY RESULTS:**

Top needs, as ranked. (Related to top issues; efforts that could be assisted by WRP Partners)

<b>Ranking</b>	<b>Score (1-6)</b>	<b>Need</b>	<b>Details</b>
<b>1</b>	4.67 (9 identified as top priority)	<b>Better Coordination and Communication</b>	WRP to provide a forum, help to expedite efforts and share best practices and communication of relevant updates.
<b>2</b>	4.47 (10 identified as top priority)	<b>Assistance with “e-harmony”</b>	Helping to find agencies with similar issues to work on efforts together/leverage resources.
<b>3</b>	3.86 (3 identified as top priority)	<b>Better Situational Awareness of Upcoming Agency Changes or Efforts</b>	Current information on upcoming planning and policy issues and grant opportunities.

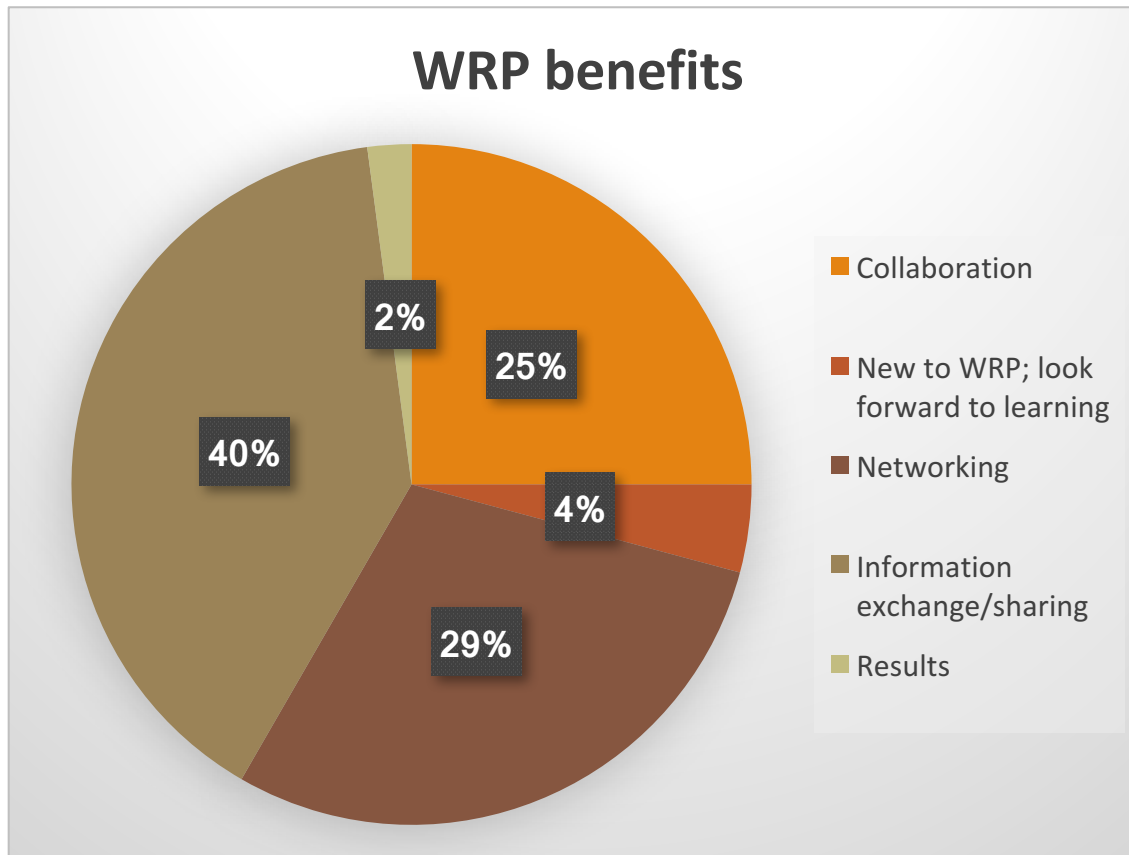
# SURVEY RESULTS

Words that describe **WRP**

coordination  
**collaboration**  
partnership communication information military  
effective sharing Amy Duffy planning awareness regional western results policy strategic  
leadership knowledge facilitation southwest transparency solutions experienced professional people  
7 generations coaching innovative engagement science cooperation needed opportunity  
diverse open-minded education progressive open participation webinar network

# SURVEY RESULTS:

## Benefits derived from WRP

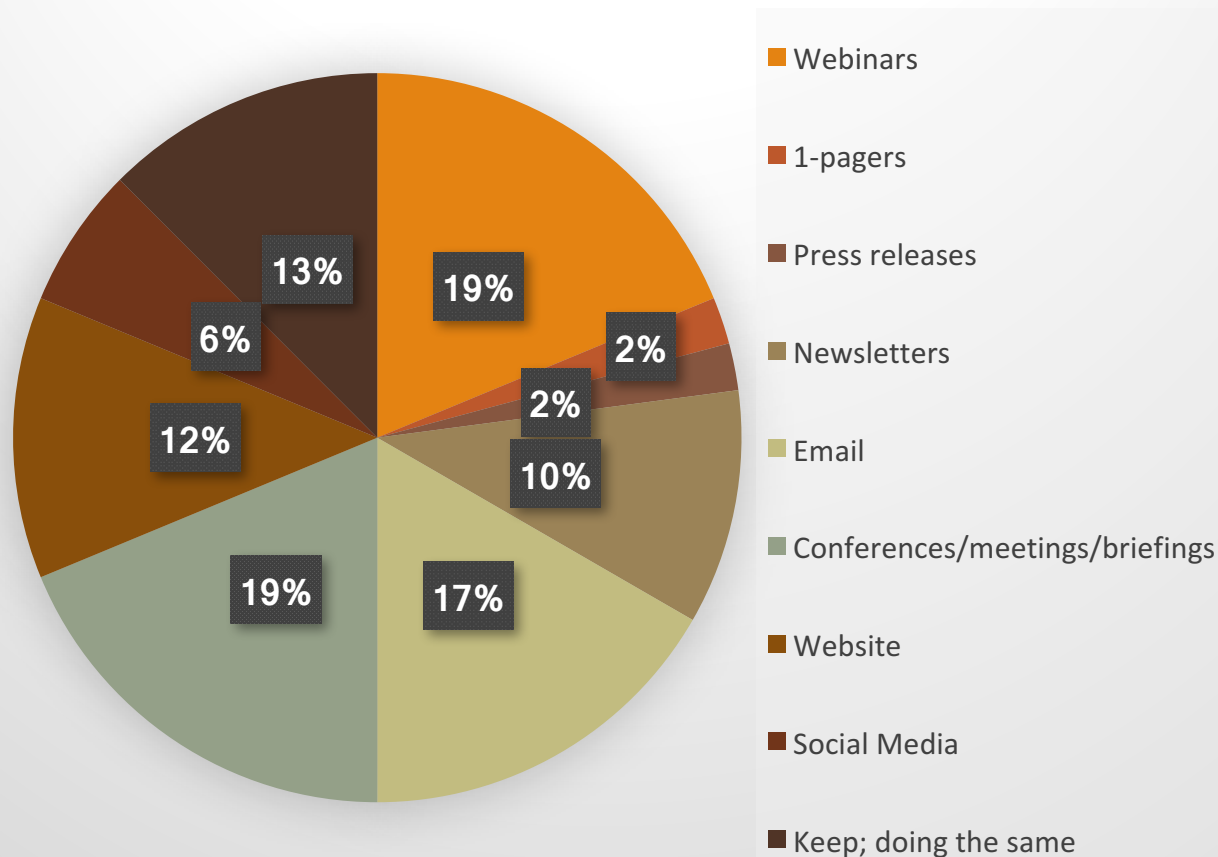


- Top Three Benefits:
- 40%: Information Exchange/Sharing
  - 29%: Networking
  - 25%: Collaboration

# **SURVEY RESULTS:**

## **Ways for WRP to best communicate efforts & successes**

Communication Methods



### Top Three Communication Recommendations:

- 19%: Webinars\*
  - 19% Conferences/ Meetings/Briefings\*
  - 17%: Email\*
- \* "Keep" doing the same was ranked 4th and also includes these items



# Proposed 2017-2018 WRP Committee Priorities

## Theme: Advancing Regional Strategies

---

- To fully leverage the results of the survey
- Put into practice those actions that WRP is particularly suited to perform in order to assist Partners in achieving the identified priorities
- Efforts to be completed between the Ninth and Tenth Principals' Meetings (December 2017 to August 2018)
- WRP Committees will convene during this period to develop and pursue actions that advance the identified priorities of the Partners
- At the Tenth Principals' Meeting, Principals will be updated on the efforts made in addressing Partners' priorities and recommending further action that can and should be taken to continue to advance those priorities

# **WRP Success**

---

**Importance of  
Collaboration in the West**

# Highlights of Past WRP Efforts

- Collaborated on broad-based regional planning in Southeastern Arizona/New Mexico and WRP Mojave Ecoregion
  - Fort Huachuca won REPI Challenge & Area designated a Sentinel Landscape
- Reports and Fact Sheets:
  - 2016 WRP Regional Strengths, Areas of Commonality and Emerging Issues
  - 2015 WRP Airspace Sustainability Overview and accompanying MET Tower Fact
  - 2015 WRP State Support for Military Testing and Training
  - 2015 WRP Guide to Working with DoD
  - WRP Intro to Federal Partners
  - 2015 WRP Renewable Energy Development on Tribal Lands
  - 2015 WRP Energy Guide
  - Brief Overview of Water-Related Resources Available to WRP Partners
  - WRP Partner Input on Species of Concern
  - 2014-2015 WRP Energy Committee Webinar Series (Highlighting Key Entities Efforts and Identify Opportunities for Multi-Agency Coordination)
  - Renewable Energy and Transmission Siting Coordination and Potential Impacts to the Military Mission
- Military Asset Listing Summaries; WRP Outreach; leveraging of efforts



## The Honorable Governor Gary Herbert Co-Chair of the WRP

---



*"The Western Regional Partnership is a great forum for states, the federal government and sovereign tribes to come together as equal partners in helping to resolve issues that impact military readiness and other key issues in the west."*



# Major General (ret) Lehnert

(in his capacity as Commanding General, Marine Corps  
Base Camp Pendleton, California)

DoD Principal at 1<sup>st</sup> & 2<sup>nd</sup> WRP Principals' meeting

---



*“The WRP is a classic case of the whole being greater than the sum of its parts. Only through cooperation can we ensure that the precious resources of this great nation are still available for generations to come.”*



## John Conger

Co-Chair of WRP (3<sup>rd</sup> -7<sup>th</sup> Principal's Meeting  
(in his capacity as Performing the duties of the  
Assistant Secretary of Defense for Energy,  
Installations and Environment)



- *"We are all connected, whether we like it or not. You make far more progress toward everyone's success once you accept the interconnected nature of our missions and interests."*
- *"WRP is an incredibly valuable forum, bringing together a critical mass of leadership from DoD, other Federal Agencies, States and Tribes. The synergy that emerges, with so many partners working to protect the critical military mission in this region, is extraordinarily important to DoD."*
- *"I was always impressed that we could come to WRP and make progress on issues that I had been working in the Pentagon. It makes a difference when you can bring everyone into the same room and make connections, understand each other, and find win-win solutions."*



## **Ms. Janice Schneider**

Former Co-Chair of WRP: 2015-2016

(in her capacity as Assistant Secretary for Lands and Minerals Management, US. DOI)

---

*“WRP is a great forum for coming together and exchanging information and ideas critical to the public lands and military mission in the southwest.”*





# Mr. Dave Duma

Acting Director, Operational Test and Evaluation  
Co-Chair of WRP (2<sup>nd</sup> Principals' meeting)



*“Dedicated individual members of the WRP have established personal working relationships fostering greater understanding of and respect for the collective missions of the participants. These personal working relationships lead to the mutually beneficial policies, programs, and actions of the WRP organizations for the benefit of the region and the nation. WRP— People making a difference!”*



## **Brig Gen (ret) Hanson Scott**

(in his capacity as Director of the Office of Military Base Planning and Support,  
State of New Mexico)

Served as Chair of the SC (2010-2011) and Chair of the WRP Interim Steering  
Committee (2009-2010)

---



*"WRP has made amazing progress in ten years as all the Partners have worked collaboratively on a wide variety of issues. Many thanks to all the Principals and Committee members for their sustained efforts. The next ten years will witness even more success."*



## Kevin Carter

(in his capacity as Director, Utah School & Institutional Trust Lands)  
Served as Chair of the SC (2012-2014); Vice Chair of the SC (2010 -  
2012); Co-Chair of the WRP Land Use Committee (2010)  
2014 recipient of Hanson Scott award for Outstanding Leadership

---



*“WRP opened doors that I never knew even existed. I still cherish the friendships that came as a result of participating.”*



## Tony Parisi

(in his capacity as Head, Sustainability Office, NAVAIR)  
Chair of the SC (2014 to 2015) Vice Chair of the SC (2011-2014)  
Served as Co-Chair of the WRP Energy Committee (2007-2011)  
2016 recipient of Hanson Scott award for Outstanding Leadership

---



*“WRP provides a unique forum that allows representatives at all levels from Federal and state agencies, and tribes to address issues of common interest. The relationships that are established extend well beyond WRP – people know who to call when they need help.”*



## Mike Mower

Deputy Chief of Staff for Governor Herbert  
Chair of WRP SC 2015 to present

Vice Chair of the WRP SC (2014-2015)

2012 recipient of Hanson Scott award for Outstanding Leadership

---



*“In a world of instant electronic communication and access to abundant on-line information, personal relationships still matter. As we promote the mission of the Western Regional Partnership and seek to enhance cooperation among key federal agencies, the states, and the tribes, knowing key players and sharing knowledge, concerns, and solutions helps us achieve good, sustainable results for our nation.”*



# Joy Nicholopoulos, Ph.D.

Deputy Regional Director, Southwest Region, U.S. Fish & Wildlife Service  
2016 recipient of Hanson Scott award for Outstanding Leadership

---



- *“Participating in the WRP is incredibly valuable for the U.S. Fish and Wildlife Service. The WRP facilitates our providing information to many critical partners.*
- *We appreciate the opportunities we have been offered to share important conservation information via meetings, calls, and webinars.*
- *We also receive information from partners that help us better serve the public and our stakeholders.”*



# Kevin Moody

Team Leader, FHWA

WRP SC member and MRHSDP&A Committee Co-Chair

---



*“The Federal Highway Administration aims to improve mobility on main streets and on interstates. The relationships we are able to sustain through WRP are a cost effective “soft” risk management strategy. The relationships help us and our customers deliver better transportation projects, faster and with less redundant costs.”*



## **Luana Kiger**

(in her capacity has Special Assistant to the State  
Conservationist, NRCS – California;  
NRCS WRP SC member)

---

*“WRP has had a number of successes. One of the most meaningful to us in NRCS in CA has been the work together with FAA, the Navy and Marines, and USDA APHIS to reduce the number of bird strikes by identifying the problem and identifying on ground safety measures to help reduce the problem.”*



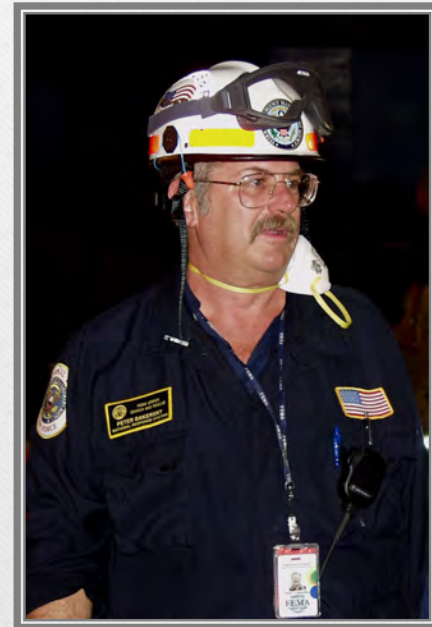


## Pete Bakersky

(in his capacity as Regional Integration Branch Chief, FEMA Region VIII); Steering Committee Member (2009-2016); Co-Chair, MRHSDP&A Committee until 2016  
2011 recipient of the WRP Hanson Scott Award for Outstanding Leadership

---

*“WRP’s success lies directly in it’s unique collaborative and cohesive approach, with all of the Federal State, local, Sovereign Tribal members and non-governmental members coming together to develop innovative solutions to issues and help identify future policy and procedural needs.”*



Remarks by  
**Brigadier  
General Kevin J.  
Killea**

Commanding  
General, Marine  
Corps  
Installations West  
- Marine Corps  
Base Camp  
Pendleton



**BGen K. J. Killea**

Commanding General, MCIWEST-MCB Camp Pendleton



# WRP Leadership

---

- Frames in the back of the room – please sign to honor the following people. Recognition will occur during the Business Session:
  - Hanson Scott Award for Outstanding Leadership
    - Kim Stevens
    - Scott Morgan
    - Jim Ogsbury
- Mike Mower for amazing leadership

# In Sum... Value of WRP

- **Strong Leadership**
- **Opportunity to engage with states, federal and Tribal entities across WRP region**
  - Regional Coordination Opportunities: Transmission, military operations, wildlife and Tribal issues do not follow state boundaries
  - Relationships: Knowing who to call and having them recognize who you are before the crisis
- **Enhancing situational awareness of policy and emerging issues**
  - Solving Problems/Creating solutions
  - IIP (Information Is Power): Knowing what is being planned by whom allows early strategizing of an appropriate response
- **Access to tools and WRP Deliverables**
  - Airspace Sustainability Guide, WRP State Support for Military Testing and Training, WRP Mojave Project, WRP Southeastern Arizona New Mexico Project, etc.
- **Identifying Opportunities**
  - Understanding where interests overlap can lead to project solutions
  - Leveraging Resources

**Invocation by LeRoy  
Shingoitewa, Hopi Tribal  
Council Representative,  
The Hopi Tribe**





- **Updates by WRP Committees on 2016-2017 Efforts and Recommendations for 2017-2018 Actions\***

- WRP SC Subcommittee on GIS: Colonel G.S. Johnston
- WRP Energy Committee: Mr. Jim Bartridge
- WRP Military Readiness, Homeland Security, Disaster Preparedness & Aviation (MRHSDP&A) Committee: LtCol J.L. Meeker
- WRP Natural Resources Committee: Ms. Abbie Jossie

- **Co-Chairs Initial Remarks on WRP 2017-2018 Proposed Actions**

*\* Final decision on 2017-2018 WRP Actions to take place during Business Session on November 30th*



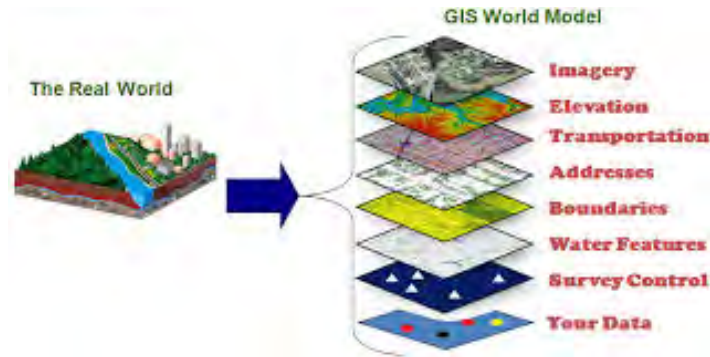




# **WRP STEERING COMMITTEE SUBCOMMITTEE ON GEOSPATIAL INFORMATION SYSTEMS (GIS)**

**Colonel Gary Johnston**  
Chair of the WRP SC Subcommittee on GIS

# WHY GIS MATTERS



**GIS is used to collect data, store, manage, analyze and produce information for DOD, DOI, DOA, etc.**

## **GIS provides a shared and common picture of issues / plans**

- GIS based maps provide a multi-layered lens to view all aspects of geographic areas of interest
- GIS helps deconflict environmental and other potential encroachment issues
- GIS promotes an understanding what is happening and what will happen in geographic space

## **GIS enables better decision making**

- Making the correct decisions about locations is strategic to the success of the overall goals of the organization
- Provides a visual framework for conceptualizing, understanding, and prescribing actions

2007 WRP GIS support identified as a requirement in the first Principals' meeting 2

# WRP Website & GIS Support Timeline

- **2007: 1st Principals' Meeting: Noted challenge and benefit of WRP “Maps (GIS)”**
- **2007-2008: The WRP website & web mapping application (WMA) established.** Site hosted & maintained by MCIWEST/GEOFidelis within MCIWEST Regional Datacenter.
- **2009: 2nd Principals' meeting.** Live demo of the Web Mapping Application was provided to highlight how Partners can create maps by referencing the collection of regional GIS data.  
**Established WRP GIS Committee to support WRP GIS needs.**
- **2010: 3rd Principals Meeting:** WRP tools in development briefed - Regional Project Database, Southern Arizona Template GIS Data-Based Land Use Planning Tool & Energy Point of Contact Database. A demonstration of the Web Mapping Application using a land use challenge scenario.
- **2011: 4th Principals' Meeting: The WRP Principals elected to sunset the GIS Committee and establish a GIS Support Group to assist all Committees.**
- **2011-2012:** Five GIS working agreements were developed and signed with the sole purpose of assisting coordination, collaboration and GIS data sharing.

# WRP Website & GIS Support Timeline

## Continued

- **2012:** Fifth WRP Principals' Meeting: Updates provided on WRP Land Use Planning Tool, WRP Mojave Project (GIS analysis) and other mapping/analysis (Tribal and energy resources).
- **2013:** **OSD support contract awarded to BAH;** ManTech maintained ownership of WRP website source code & website domain. ManTech continued to provide website maintenance (under NAVAIR subcontract) during transition.
- **2013, 2014, 2015:** **Sixth, Seventh and Eighth WRP Principals' Meetings: Spatial data analysis and mapping was conducted in support of WRP Committees** (and discussed by WRP SC Subcommittee on GIS) with extensive support of the WRP SoAZ/NM project.
- **2014:** **The WRP website transferred from MCIWEST to ManTech after the Marine Corps consolidated GIS capability and regional hosting discontinued.**
- **Aug 2014 – 2017:** ManTech continued to operate and support WRP GIS and website in limited manner.
- **2017:**
  - WRP Web Mapping Application and Land Use Planning Tool removed from WRP Website. **WRP no longer has GIS tools; internal mapping capability.**
  - **WRP Regional Assessment sought WRP Partner input with existing web mapping tools and GIS data deemed useful in regional planning efforts.**
  - **New WRP website developed by BAH & Texas A&M (through REPI Office).**
  - **GIS recommendations developed for WRP Principals' consideration.**

# **WRP SC Subcommittee on GIS**

## **WRP SC Recommendation**

- Attain geospatial requirements to support WRP priorities, assess whether existing tools and resources can be leveraged to meet these requirements, and coordinate sharing of existing and available tools and resources
- Conduct planning to support WRP GIS-related requirements necessary to fulfill WRP mission
- Provide guidance on key items including ensuring priorities set forth by the WRP Principals are completed



# WRP GIS Support Group

## WRP SC Recommendation

- Provide data support to the Committees to assist in collaboration and planning within the WRP area of responsibility
- Provide awareness of data resources available for use by WRP Committees
- Each WRP Committee is supported by a GIS Liaison:
  - Identify opportunities for using GIS to advance the WRP Committees' efforts; and
  - Work with the WRP Steering Committee to identify geospatial opportunities and leverage external tools and existing resources to support WRP priorities

# **GIS Goal in WRP Charter**

## **WRP SC Recommendation for 2017 WRP Charter Update**

Within the WRP Charter, there are six goals, with one on GIS:

- Identify geospatial requirements and leverage existing tools and resources to support WRP priorities

# New wrpinfo.org site please sign up for an account



## What is WRP?

WRP provides a proactive and collaborative framework for senior-policy level Federal, State and Tribal leadership to identify common goals and emerging issues in the states of Arizona, California, Colorado, Nevada, New Mexico and Utah and to develop solutions that support WRP Partners and protect natural resources, while promoting sustainability, homeland security and military readiness.

Learn more

## News & Events

The Council on Environmental Quality published its initial list of actions it will undertake to enhance and modernize the environmental review and permitting process ordered by EO 13807. For more information on this and other relevant news in the WRP region, see [the latest monthly newsletter](#).

### Upcoming Meetings and Webinars

- [November 29-30, 2017: Ninth Annual Principals' Meeting in Phoenix, AZ](#)

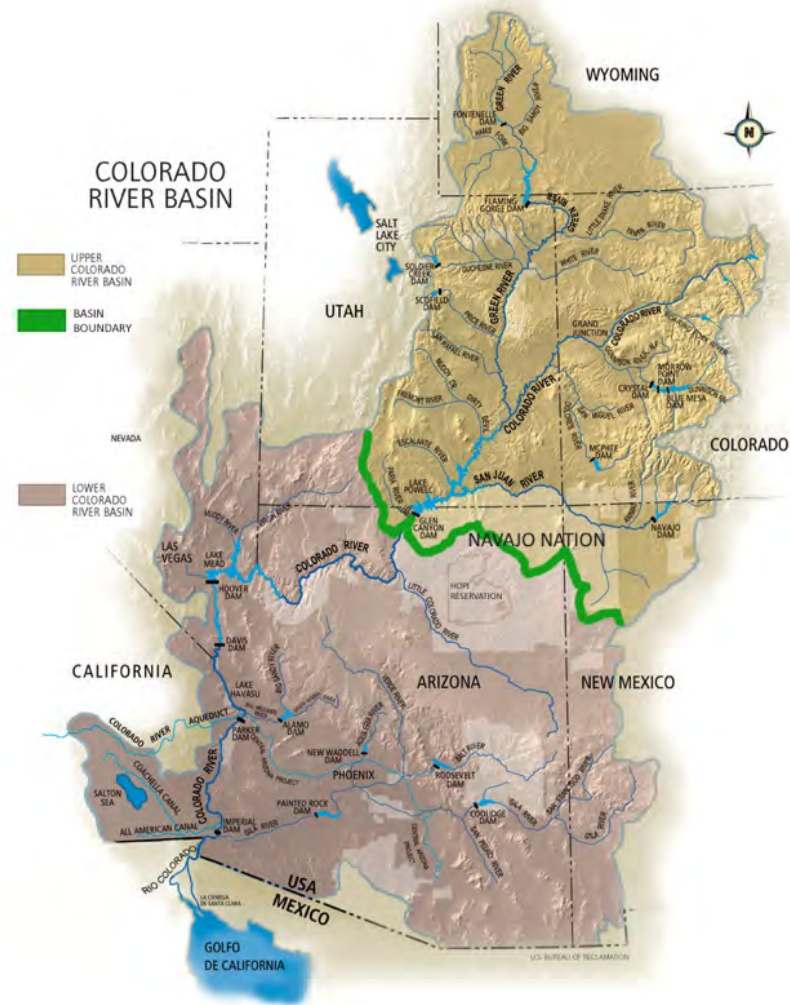
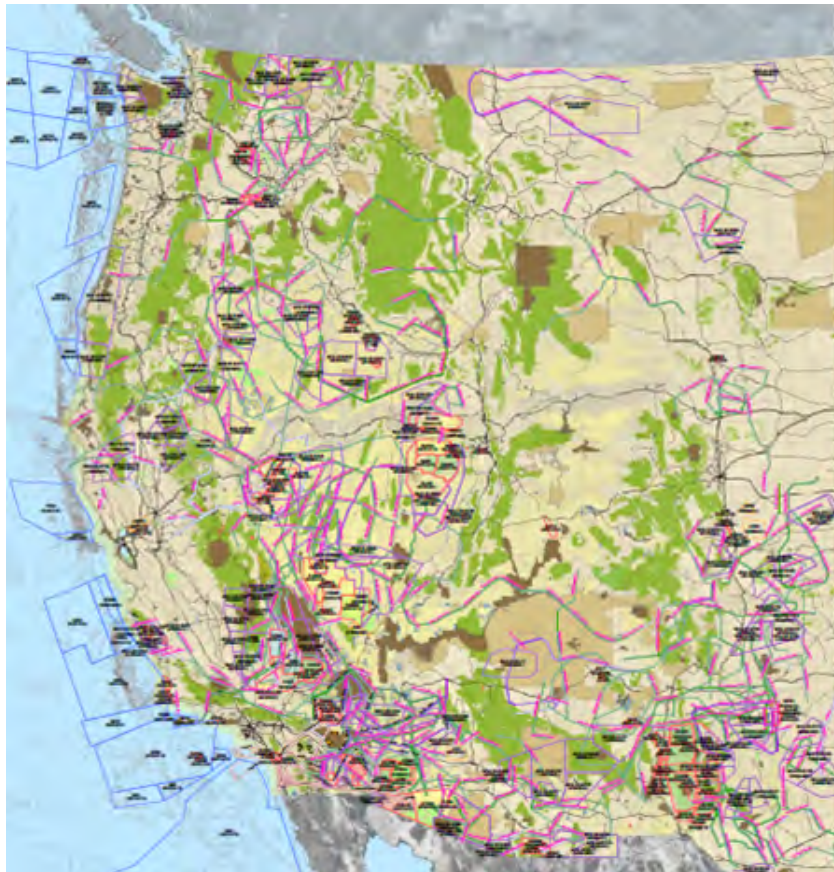
Learn More

## Explore WRP



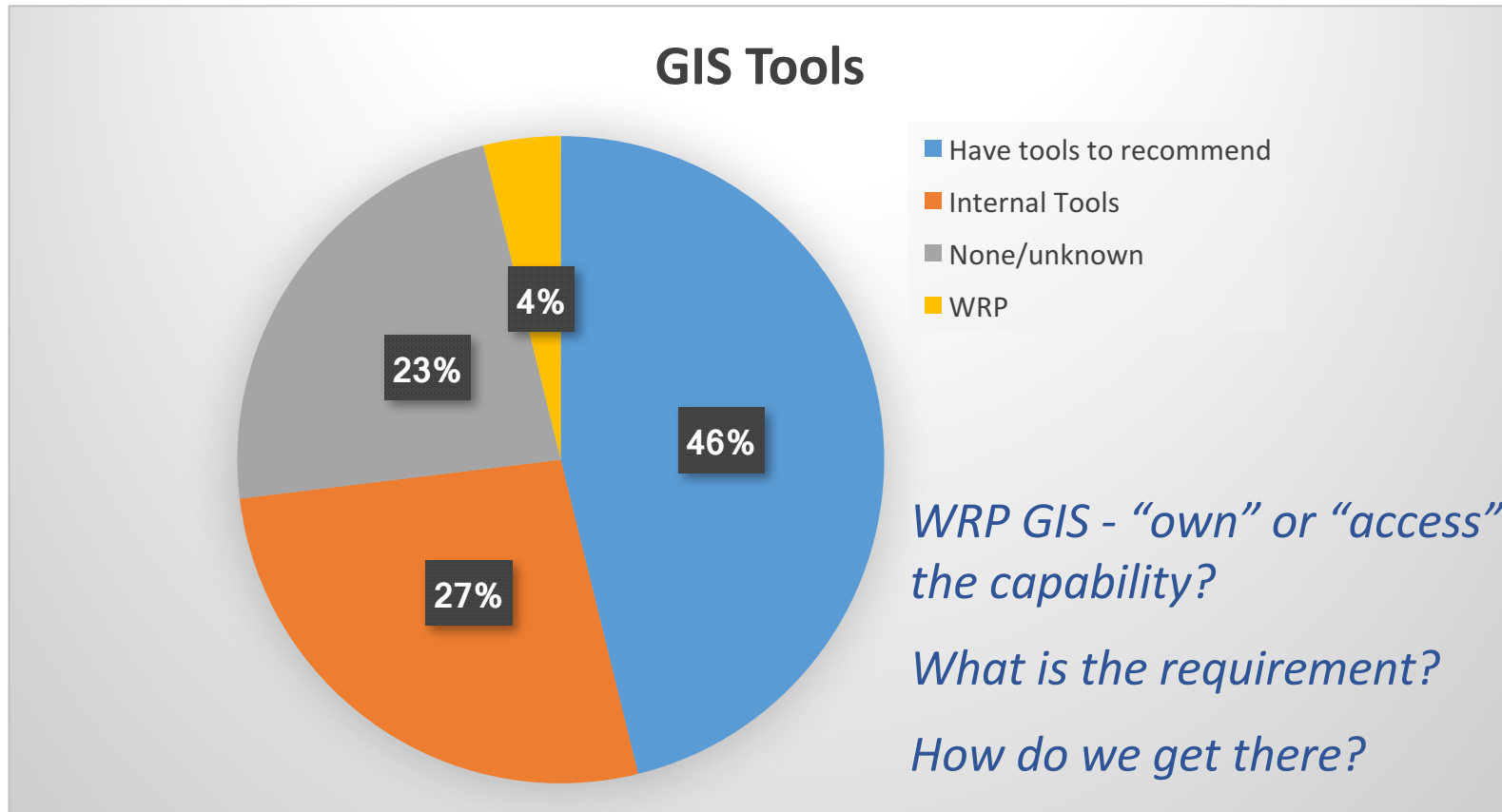


# Questions / Comments



# Existing GIS Mapping Tools

*Ref: WRP Regional Assessment Survey*



*Data information exchange/facilitating data collaboration was ranked #5 of top "needs" (WRP RAS)*



# WRP GIS Subcommittee (WRPGISS)

<p><b><u>Purpose:</u></b></p> <ul style="list-style-type: none"> <li>- Attain geospatial requirements to support WRP priorities, assess whether existing tools and resources can be leveraged to meet these requirements, and coordinate sharing of existing and available tools and resources</li> <li>- Conduct planning to support WRP GIS-related requirements necessary to fulfill WRP mission</li> <li>- Provide guidance on key items including ensuring priorities set forth by the WRP Principals are completed</li> </ul> <p><b>Location:</b> TBD (In person / Telecon)</p> <p><b>Frequency / Time:</b> Quarterly / TBD</p> <p><b>In-Puts Deadline:</b> 30 days prior to meeting</p>	<p><b><u>Attendees:</u></b></p> <p><b>Chairs:</b></p> <p>Colonel Gary Johnston (MCIWEST/USMC)          Kristin Thomasgard-Spence (OSD)          Dwight Deakin (USN)</p> <p><b>Lead:</b> Ms. Amy Duffy (WRP Coordinator)</p> <p><b>Required:</b> WRP SC Subcommittee members; GIS Support Group Co-leads; GIS/IT Contract Support</p> <hr/> <p><b>Others:</b> As required</p>
<p><b>References / Resources:</b></p> <p><a href="https://bah16f18.adobeconnect.com/gis/">https://bah16f18.adobeconnect.com/gis/</a></p> <p><a href="https://wrpinfo.org">https://wrpinfo.org</a></p>	<p><b><u>Inputs:</u></b></p> <ul style="list-style-type: none"> <li>• Principals' and Steering Comm tasks / guidance</li> <li>• Request for GIS support / products</li> </ul> <hr/> <p><b><u>Outputs:</u></b></p> <ul style="list-style-type: none"> <li>• Provide recommendations to support GIS requirements and priorities</li> <li>• Develop requisite plans, processes, and procedures for GIS tool / resource implementation</li> <li>• Stand up and task GIS Support Group as required</li> </ul>



# WRP Energy Committee Update

---

Jim Bartridge, WRP Energy Committee Co-  
Chair



# WRP Energy Committee Co-Chairs

---

- **Steven Arenson**, Deputy Director, Strategic Plans and Programs, Office of the Deputy Assistant Secretary of the Air Force for Installations
- **Jim Bartridge**, Senior Transmission Program Specialist, Siting, Transmission and Environmental Protection Division, California Energy Commission
- **Angie Dykema**, Director, Nevada Governor's Office of Energy
- **Lucas Lucero**, Deputy State Director, Lands, Minerals & Energy, BLM, AZ State Office

# WRP Energy Committee Webinars

---

- **Section 368 Regional Review Project:** initial -12/2016 & follow up 11/2017
  - BLM Washington Office and Argonne National Laboratory
- **Western Interstate Energy Board** and regional energy efforts
  - By Executive Director of WIEB
- **BOEM** current planning and coordination activities for possible future wind development in federal waters in the Pacific
  - By Regional Director of the BOEM Pacific Region office
- **Western Electricity Coordinating Council**
  - WECC Senior Policy Analyst and Manager, System Adequacy Planning
- **DOE's Office of Indian Energy Policy and Programs**
  - by Director of program
- **BLM RE Program** with focus on BLM's new rule governing solar and wind energy development on public lands
  - BLM Program Manager, Office of Renewable Energy Coordination and Program Lead, BLM Renewable Energy Coordination Office

# WRP Energy Committee Efforts

---

- Regional Assessment Efforts, more fully explore:
  - Agency's involvement with energy development and infrastructure and associated challenges
  - Agency's top energy or infrastructure projects
  - Agency's related planning efforts to be initiated by 2020
  - Changes in policies (administrative or statutory) that agency contemplates
  - Energy-GIS related data

Worked to identify large scale energy projects in the WRP region and upcoming policy changes

# Agency involvement with energy development and infrastructure and associated challenges

(example)

---

## BLM

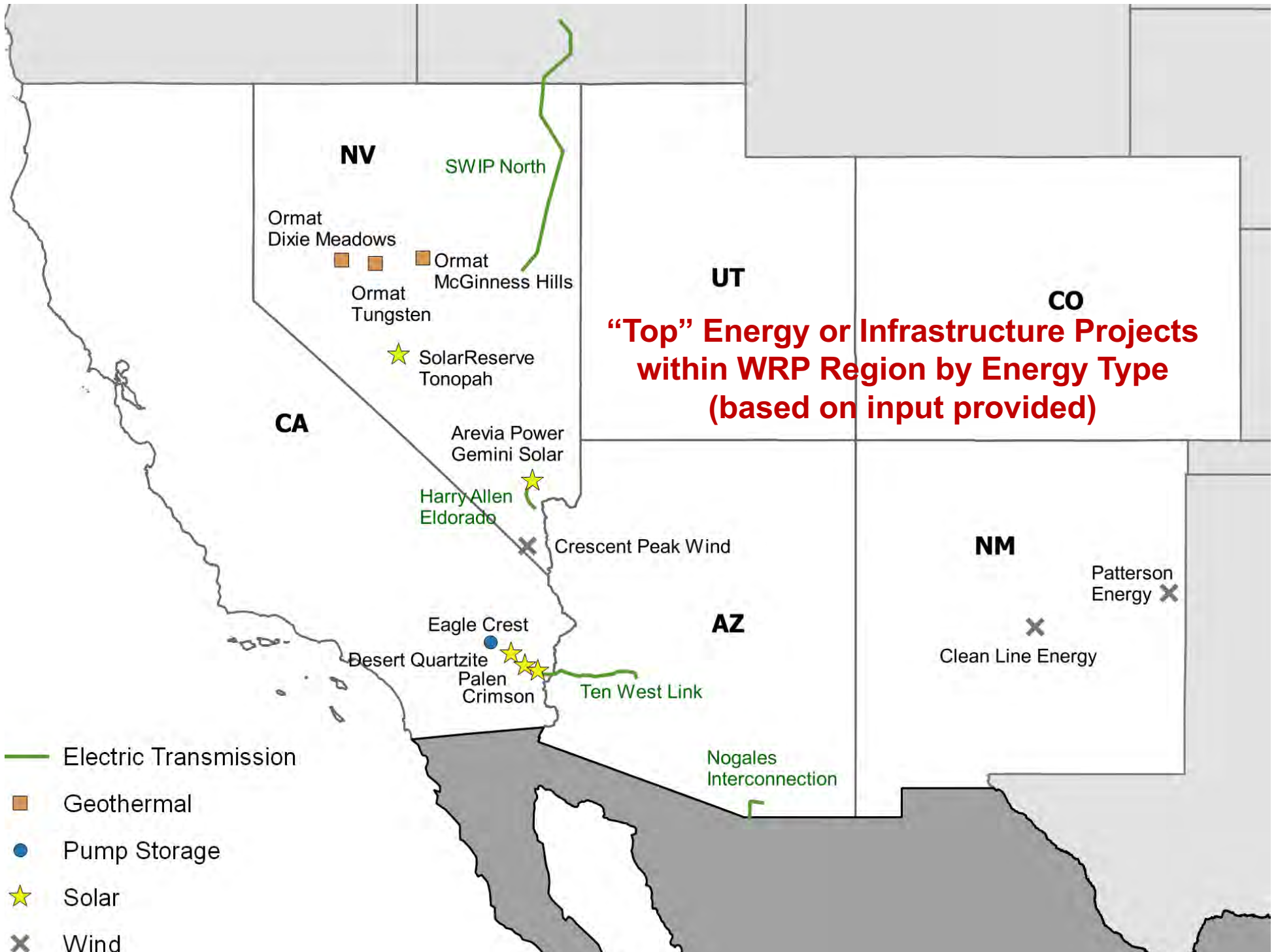
- Lead or cooperating agency for permitting renewable energy, high-voltage transmission and energy pipelines
- Designates transportation and energy corridors in land use plans
- Challenges:
  - Multiple agency permits and inconsistent processes/requirements among agencies
  - Private land owners desire projects primarily on public lands
  - Visual impacts from solar, wind and transmission projects
  - Potential impacts to military test and training operations
  - Increasing restrictions on potential siting areas (e.g. protected lands, protected species, conservation easements, etc.)
  - Project developer timelines
  - Losses of experienced agency personnel by retirements and attrition
  - Insufficient incentives for siting (e.g. projects in one state that “serve” another state)



<b>State</b>	<b>Electric Transmission &gt; 115kV</b>	<b>Natural Gas</b>	<b>Crude Oil</b>	<b>Refined Petroleum Products</b>
<b>Arizona</b>	8,931	6,671	0	574
<b>California</b>	21,054	12,388	3,575	3,373
<b>Colorado</b>	8,073	7,803	1,195	1,037
<b>Nevada</b>	6,095	2,051	0	276
<b>New Mexico</b>	7,113	6,565	2,172	2,138
<b>Utah</b>	4,718	3,123	598	719
<b>Total – WRP Region</b>	55,984	38,601	7,540	8,117

State	Area (sq. mi.)	State Ranking by Area	Population	Roads (mi)	Bridges	Freight rail (mi)
Arizona	113,990	6	6,931,071	66,441	8,031	1,643
California	163,695	3	39,250,017	174,989	25,315	5,295
Colorado	104,094	8	5,540,545	88,565	8,666	2,662
Nevada	110,572	7	2,940,058	40,139	1,896	1,192
New Mexico	121,590	5	2,081,015	70,772	3,951	1,837
Utah	84,897	13	3,051,217	46,254	3,014	1,343
<b>Total – WRP Region</b>	698,838		59,793,923	487,160	50,873	13,972





# Agencies' related planning efforts that will be initiated by 2020

---

- Reviewing west-wide (Section 368) energy corridors in the western U.S. The agencies are developing recommendations for new, modified and deleted corridors. Changes to corridors will be undertaken in future land use plan revisions
- Revisions to export authorization and Presidential permit procedures to make application process more efficient
- Need to consider new wind towers in planning future test articles flying into test range
- Energy, environmental and land use planning and coordination to minimize species/habitat impacts and land use conflicts associated with energy and transmission projects for higher levels of renewable generation



# Changes in policies (administrative or statutory) that agencies are contemplating

---

## BLM:

- Improvements to NEPA review process

## DOE:

- Publishes triennial congestion studies of electric transmission networks
- May designate a “national interest electric transmission corridor” to facilitate construction of congestion-easing transmission project
- FAST-41 implementation and compliance
- August 2017 Infrastructure Executive Order
- Guidance on IIP implementation

## California Energy Commission:

- Current law requires reduction in overall greenhouse gas emissions of 40% and a RPS of 50% by 2030; RPS expected to increase before 2020

# Energy-GIS related data


---

- BLM [Solar Mapper Tool](#)
- BLM [ArcServer for AGOL](#)
- [BLM 368 Corridor Mapping Tool](#)
- [DOE Energy Zones Mapping Tool](#)
- [DOE Energy and Water Data Portal](#)
- [DOE NatCarb Viewer](#)
- [WECC Environmental Data Viewer](#)
- [WECC Interactive Transmission Project](#)
- [Renewable Energy Transmission Initiative \(RETI\) 2.0 Gateway](#)
- [EIA State Energy Profile and Energy Estimates](#) –
- [EIA U.S. Electronic System Operating Data](#)
- [Regulatory and Permitting Information Desktop Toolkit](#)
- [California Energy Commission Gateways Data](#)

# The WRP Energy Committee in 2017-2018 will:

---

## DRAFT FOR CONSIDERATION

- Further explore energy-related findings from the 2017 WRP Regional Assessment and further summarize changes in policy, upcoming trends, and top energy projects within WRP Region
  - Continue to share information on new renewable energy projects and transmission lines and highlight State, Federal and Tribal energy planning efforts and resources in the WRP Region
  - Enhance WRP Partner awareness of new energy generation and transmission planning processes and opportunities for engagement to address/mitigate mission impacts, especially those impacts on the military's ability to test and train, natural and cultural resources, and Tribal lands
- 



# **WRP MRHSDP&A Committee Update**

---

LtCol Meeker/USMC

WRP MRSHDP&A Committee Co-Chair



# WRP MRHSDP&A Committee Co-Chairs

---

- **LtCol Jeff Meeker**, Regional Airspace Coordinator, Marine Corps Installations-West
- **Kevin Moody**, Ecologist, FHWA
- **Stephanie Poore**, NPD Analyst, FEMA Region VIII
- **Connie Reitman**, Executive Director, Inter-Tribal Council of CA, Inc.
- **Kim Stevens**, Director of Communications and Operations, NASAO
- **Julie Valentine**, Senior Advisor - SW Border, Bureau of Land Management


# WRP MRHSDP&A Committee Regional Assessment Efforts

---

Focused on airspace (Regional Assessment):

- Airspace use and sustainment challenges
- UAS operations (use and integration/deconfliction)
- Any related planning efforts that will be initiated by 2020

Regional Assessment Report notes the following  
Aviation Encroachment/Sustainability Challenges:

- Land Encroachment/Development
  - Changes in Aviation Operations
  - Electromagnetic Interference
  - New Technologies
- 

# WRP MRHSDP&A Committee Webinars

---

- **State aviation perspectives**
  - State Directors of four states: CA: Gary Cathey; CO: David Ulane; NV: Kurt O. Haukohl and UT: Jared Esselman
- **National Telecommunications and Information Administration's (NTIA's) Office of Spectrum Management (OSM)**
  - Peter Tenhula, Deputy Associate Administrator NTIA OSM
- **Big-picture strategic view from the FAA, General Aviation and airlines on the future of airspace in the U.S. and, in particular, the western states**
  - Elizabeth Lynn Ray, Vice President, Mission Support Services, FAA; Mr. Mike Cirillo, Airlines for America (A4A); and Ms. Heidi Williams, National Business Aviation Association (NBAA)
- **Wildfire and forestry** – Joint webinar with WRP Natural Resources Committee
- **FAA Southern California Metroplex Project**
  - Robert (Rob) E. Henry, Manager, SoCal Metroplex, FAA

# Agencies' use of airspace and sustainment challenges

---

DoD:

- Encroachment/Energy Infrastructure
  - Potential obstacles for low-level flying aircraft
  - Electromagnetic and acoustic interference that may impact sensors, communications, and navigational aids.
- Next generation advanced, high speed/long-range aircraft
  - Special Use Airspace
  - Long-range training



# Agencies' use of airspace and sustainment challenges

(examples)

---

DoD:

- Energy infrastructure can not only act as obstacles for low-level flying aircraft, but may also cause sustained electromagnetic and acoustic interference that impact sensors, communications, and navigational aids. Wind turbines cause false radar returns which could impact military training missions
- Confusion may result where DoD has access to airspace but does not manage the land below. Although a training site is in a remote and sparsely inhabited area, the airspace above may still be congested
- New advanced, high speed aircraft such as the F-22 Raptor and F35 Joint Strike Fighter need more space to maneuver in a safe fashion; long range airspace corridors may be needed
- New weapons systems tend to need a higher data rate for spectrum. A secure communications network is vital to ensure information security for new aircraft such as the JSF

# Agencies' use of airspace and sustainment challenges


(continued)

---

## Utah:

- Anticipates fewer but larger aircraft requiring growth at hub airports, possibly at the expense of medium to small airports
- General aviation may see increased innovation/research and development in aircraft manufacturing because of FAA rewrite of Part 13 of FARS
- Encroachment by tall buildings, towers or poles in glide slope areas and development in runway protection zones.

## BLM

- Fire-related flights and resource management projects. Concerned by an increase in aircraft flying into temporary flight restrictions (TFR) issued by the FAA over fire areas
  - Permits for tall structures processed to ensure they meet FAA standards, are coordinated with DoD, and added to BLM's Fire and Aviation group hazard maps.
- 

# Agencies' use of airspace and sustainment challenges


## (continued)

---

### Utah:

- Anticipates fewer but larger aircraft requiring growth at hub airports, possibly at the expense of medium to small airports
- General aviation may see increased innovation/research and development in aircraft manufacturing because of FAA rewrite of Part 13 of FARs
- Encroachment by tall buildings, towers or poles in glide slope areas and development in runway protection zones. Solutions include conditioning the receipt of state or federal grants on local jurisdictions adopting zoning ordinances consistent with airport master plans or adopting Part 77 of FARs into State code

### BLM

- Mainly fire-related flights, but also resource management projects. Concerned by an increase in aircraft flying into temporary flight restrictions (TFR) issued by the FAA over fire areas
  - Permits for tall structures (e.g., MET towers, wind turbines, high voltage transmission structures, solar power towers and communication towers) processed to ensure they meet FAA standards, coordinated with DoD, and added to BLM's Fire and Aviation group hazard maps. An official protocol may help ensure consistent application of standard
- 

# UAS operations

---

- Since 2013, States have enacted a variety of laws to address growing use of Unmanned Aircraft Systems.
- Increased use of UAS in active fire areas.
  - Hazard to aircraft firefighting efforts.
- UAS operations increasing,
  - Cultural, recreation, wildlife, wildland fire, fuels management and T&E vegetation.
  - BLM has flown UAS remote sensing projects in Arizona, California, New Mexico (and other non-WRP states).
- Significant increase of requests to use drones for filming on public lands and countless other applications
  - anticipate this trend will continue



# Future Planning Efforts

---


## FAA:

- Metroplexes, areas with multiple airports serving a major metropolitan area and diverse stakeholders, within the WRP region (Denver, Las Vegas, Northern California, and Southern California)
- NextGen, designed to more efficiently, safely and optimally use airspace, will include: SFO, LAX, SAN, LAS, PHX, SLC and DEN

## Marine Corps Air-Ground Combat Center, 29 Palms, CA:

- Additional Special Use Airspace (SUA) over recently acquired land to meet Marine Expeditionary Brigade sustained, combined-arms, live-fire and maneuver training requirements.

## White Sands Missile Range:

- Expects increased airspace requirement to support long range systems, hypersonic and 5<sup>th</sup> generation weapons.
- 

# Aviation-GIS related data

---

## USGS:

- Windfarm shows wind turbine sites throughout the US

## DoD:

- DoD-Approved RAIMORA's
- Low-Level Military Airspace

## BLM:

- MET tower location data (in fire and aviation program hazard maps)  
Uncertain as to how current this information is
- Milford Wind Farm Turbines (should also be in FAA data)


## Utah:

- Airport and Aviation Layout and Data
- 

# The MRHSDP&A Committee in 2017-2018 will:

---

## DRAFT FOR CONSIDERATION

- Further explore related findings from the 2017 WRP Regional Assessment
  - Support military readiness by enhancing awareness of the DoD mission in the WRP region and serving as a forum to address compatible land uses in the vicinity of military operations
  - Assist WRP Partners' respective homeland security/disaster preparedness missions to foster awareness of the interdependence among Partners. Capture emerging issues and recommendations that foster disaster recovery as well as address instabilities and vulnerabilities such as cyber security. Highlight existing resources and tools to assist WRP Partners
  - Serve as a forum for aviation users by sharing information on changes to airspace use within the WRP region, including developments in new technology and the integration of UAS into the National Airspace System and highlighting potential impacts
- 



# WRP Natural Resources Committee Update

---

Abbie Jossie, WRP Natural Resources  
Committee Co-Chair



# WRP Natural Resources Committee Co-Chairs

- **Thomas M. Finnegan**, Colonel (Retired), Arizona Military Affairs Commission
- **Charles “Mike” Hamilton**, Marine Corps Installations West – Marine Corps Base Camp Pendleton G-7 Environmental Plans Officer for Governmental External Affairs and Regional Environmental Coordination Office
- **Clayton Honyumptewa**, Director, Department of Natural Resources, The Hopi Tribe
- **Abbie Jossie**, Deputy State Director, Resources, Bureau of Land Management, Utah
- **Kevin Kinsall**, Natural Resources Intergovernmental Coordinator Arizona Game and Fish Department

# WRP Natural Resources Committee Webinars

---

- **Water rights adjudications, federal reserved water rights and how to meet future water needs**
  - Tony Willardson, Executive Director, WSWC; John Simpson, Partner, Barker, Rosholt & Simpson, LLP; Arianne Singer, New Mexico Office of the State Engineer and Pat Lambert, SW Region Associate Director/Water Census Leadership Team, USGS
- **U.S. Forest Service land management planning and opportunities for engagement**
  - John Rupe, Land Management Planning Specialist, Forest Service Washington Office, Ecosystem Management Coordination
- **Wildfire and Forestry (Featuring CAL FIRE, WFLC & WGA)\***
  - Chief Ken Pimlott, State Forester, CA Department of Forestry & Fire Protection, Mr. Mike Zupko, Executive Manager, Wildland Fire Leadership Council and Mr. Troy Timmons, Director of Strategic Initiatives, Policy Advisor, Western Governors' Association (WGA)
- **Mexican Wolf Recovery Program**
  - Sherry Barrett, Mexican Wolf Recovery Coordinator, U.S. Fish and Wildlife Service

*\* Jointly sponsored with MRHSDP&A*



# WRP Natural Resources Committee Efforts

---

- Regional Assessment Efforts, more fully explore species input:
  - Agencies' unofficial review of three species that if listed could result in delays or increases in cost to program and mission
  - Agencies' unofficial review of three species that are already listed that impact mission/increase in regulatory burden
  - Agencies' related planning efforts that will be initiated by 2020
  - Species-GIS related data (natural resources, critical habitat, environmental planning)

Identified species of most concern to collective WRP Partners with the ultimate goal to gain credit for existing work to avoid listing/work towards de-listing.

# Coordination with USFWS

---

Developed a spreadsheet highlighting current USFWS efforts to address Endangered Species Act (ESA) listing and critical habitat decisions within WRP region

- 532-listed species believed to or known to occur in WRP Region
- 117 species that are part of the seven-year work plan
- 35 species that are part of the FY17 workload
- 23 unscheduled listing actions for species
- 18 Downlisting and Delisting Species

This information was sent with the survey request along with summary of 2015 WRP Partner input on species of concern

# WRP Natural Resources Committee Survey Results

Species	Status	Location	2017 Input	2015 Input
Little brown bat	Not listed	CO	Tied for first	
Monarch Butterfly	Under Review (90 Day Findings on 2 petitions 12/31/2014)	AZ, CA, CO, NM, NV, UT	Tied for first	Tied for third
Western spadefoot toad	Under Review (90 Day Findings on 31 petitions 7/1/2015)	CA	Tied for second	
Yellow-billed cuckoo	Threatened (11/30/2014)	AZ, CA, CO, NM, NV, UT	Tied for second	Tied for fifth
Least bell's vireo	Endangered	CA	Tied for second	
Mountain yellow legged frog	Endangered	CA	Tied for second	



# WRP Natural Resources Committee Recommended Next Steps

---

1. Finalize Committee criteria on which species/habitats to address
2. Confirm species of interest and Partner involvement
3. Take “top” species and develop data overlays, with habitat and range (species synopsis)
4. By Tenth WRP Principals’ Meeting, work to identify threats and opportunities and quick successes and work to leverage existing and ongoing efforts (maximize efficiencies)

## **DRAFT recommended committee Criteria**


- Multi-state region (at least 2 states)
- Maximizes mission interest of WRP Partners (supports many members’ missions)
- Coordinates with existing efforts
- Builds resilience for wildlife and enhances Partners’ missions
- Increases habitat/precludes listing

**Objective:** Enhance collaboration among WRP to assist efforts to preclude or delist species through conservation efforts and to relieve the regulatory burden for WRP Partners

# The Natural Resources Committee in 2017-2018 will:

---

## DRAFT FOR CONSIDERATION

- Further explore related findings from the 2017 WRP Regional Assessment
  - Continue to assist efforts to preclude or delist species through coordinated conservation efforts in order to mitigate regulatory restrictions. Identify potential gaps and leverage existing ongoing efforts to maximize efficiencies
  - Serve as a resource for WRP Partners in their regional/landscape-level conservation efforts (e.g. Sentinel Landscape efforts, etc.)
  - Assist WRP Partners in engaging in ongoing dialogue on Western water sustainability
- 

# Agencies' related planning efforts to be initiated by 2020

## *Examples of information in report*

---

- BLM RMPs in the WRP Region
- USFS: within WRP region, currently 15 National Forests where land management plans are being revised
- MCIWest: Desert Tortoise Relocation efforts in support of Large Scale Exercises, MCAGCC 29 Palms and Updated CPEN INRMP (2017)
- NOAA: NOAA Marine Fisheries initiates reviews regarding the status of certain species and issues opinions to support determinations on whether to list those species.
- NPS: Notices of current planning efforts at specific park system units through the [NPS Planning, Environment and Public Comment website](#)
- USACE: performs Invasive Species management and Conservation Planning under Endangered Species Act
- USFWS:
  - Mexican Wolf draft revised Recovery Plan will be completed (stipulated in court approved settlement agreement) by end of November.
  - Lesser Prairie Chicken draft plan has been sent to stakeholders for review and comment, then a 12-month finding on the petition to list the species will be completed by February 2018.
  - The peer review of the draft Monarch Butterfly Species Status Assessment (SSA) will be completed in Spring 2018; in early summer 2018 information will be collected from states on formal conservation efforts for use in listing analysis and listing decision is due in June 2019.

# Species-GIS related data (natural resources, critical habitat, environmental planning)

*Examples of information in report*

---

- BLM: [BLM Landscape Approach Data Portal](#) & BLM [Navigator](#)
- NPS: [NP Map](#) ; [NPS repository](#) of GIS and other relevant data and reports related to park lands.
- [Earth Explorer](#)
- [Integrated Resource Management Applications \(IRMA\) Portal](#)
- [The REPI Interactive Map](#)
- [USACE Engineer Research and Development Center Threatened and Endangered Species cost information](#)
- [GloVis](#)
- [www.gis.utah.gov](http://www.gis.utah.gov)
- [www.wildlife.utah.gov](http://www.wildlife.utah.gov)
- [Reclamation's WaterSMART Visualization tool](#)



# **Sentinel Landscapes in the WRP Region ~ Success and Opportunity**





# WRP Sentinel Landscape Plenary Session

---

U.S. Departments of Agriculture, Defense, and the Interior established the Sentinel Landscapes Partnership in 2013

- Nationwide partnership dedicated to promoting natural resource sustainability and the preservation of agricultural and conservation land uses in the critical landscapes that support and sustain key military installations and ranges.

This panel will highlight:

- **Purpose and value** of a Sentinel Landscape and identify the fundamental components necessary for designation;
- Success to date of the **Fort Huachuca (AZ) Sentinel Landscape**;
- NRCS partnership efforts around **NAS Fallon (NV)** to protect working lands and habitat for greater sage grouse that protect critical military training; and
- How a coalition around **Camp Williams (UT)** is taking an innovative approach to provide a buffer to support national security and species.

Panelists will also share their thoughts on how WRP Partners might assist in supporting other landscape level efforts within the WRP region

# WRP Background

---

Collaborated on **broad-based regional planning** in two important geographic regions that had significant wildlife, military testing and training, and renewable energy development and other infrastructure:

- Mojave ecoregion – coordinated with DRECP
- Southeastern Arizona/New Mexico Region
- Coordinate on issues; support Partners on issues
  - E.g. Helped to link NAS Fallon with NV NRCS
  - Webinars to highlight web-based tools to facilitate land use planning, information exchange and wildlife conservation
  - Water-related issues
  - Working with WRP Partners on species of concern

# SoAZ/NM Project: A formula for success.

---



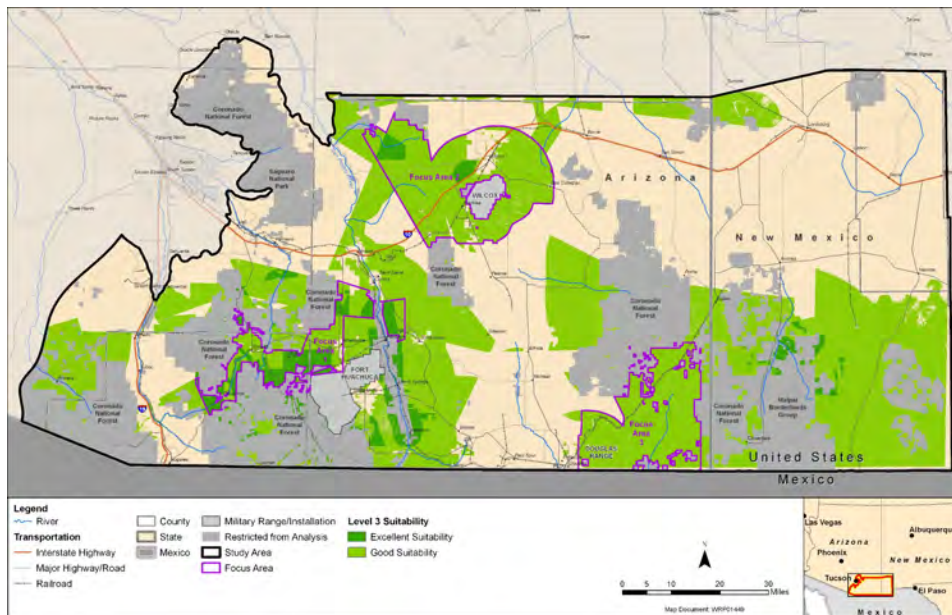
- Identified areas important to both ecological and military values through GIS Analysis with partner input.
  - Initial study area of 13,100 square miles was refined to three identified focus areas consisting of 1,335 square miles.
- Examined appropriate locations for conservation easements and other projects to enhance habitat, reduce loss potential and improve connectivity and support the military mission.

As a direct result of this project's efforts, the area:

- Won the 2014 REPI Challenge (\$4 million)
- Received funding from the Arizona Military Installation Fund for a conservation easement/deed restriction of 908 acres within WRP SoAZ/NM Project priority Focus Area 1
- **Fort Huachuca was designated a Sentinel Landscape**
- Heightened awareness of the region's importance for natural resources and military operations

# Thank you to the following entities for their efforts to make this project a success!

Arizona Land and Water Trust; Arizona State Land Department; Arizona State Parks; Arizona State University; Audubon; Arizona Army National Guard; Arizona Department of Transportation; Arizona Game & Fish; Arizona Governor's Office; Arizona Military Affairs Commission; Arizona State Forestry; Arizona Zoological Society; Border Patrol; Bureau of Land Management; Bureau of Reclamation; City of Sierra Vista; Cochise County; Colorado State University; Desert Landscape Conservation Cooperative; DOT&E; Federal Highway Administration; Ft. Huachuca; Life Net Nature; Luke AFB 56RMO; National Park Service; New Mexico State University; OSD(I&E); Sky Island Alliance; Sonoran Institute; Southeastern Arizona Government; Southwestern Power Group; The Nature Conservancy; Trust for Public Lands; U.S. Department of Interior; U.S. Fish and Wildlife Service; U.S. Forest Service; U.S. Geological Survey; University of Arizona; USDA-NRCS; White Sands Missile Range



<b>WRP SoAZ/NM Project Focus Areas:</b>	<b>Total Area</b>
<b>Focus Area 1:</b> Intersection of Cochise, Pima and Santa Cruz Counties	277 mi <sup>2</sup>
<b>Focus Area 2:</b> Southeastern Arizona, Northwestern Cochise County	619 mi <sup>2</sup>
<b>Focus Area 3:</b> Southeastern Arizona, Southeast Cochise County	439 mi <sup>2</sup>

# Sentinel Landscapes in the WRP Region Success and Opportunity Plenary Session

---

## Plenary Leads:

- **Ms. Kristin Thomasgard-Spence**  
REPI Program Director, ODUSD (I&E)
- **Mr. Astor Boozer**  
Regional Conservationist for the West  
Region, NRCS
- **Mr. Jeffrey Jennings**  
Deputy to the Commanding General,  
U.S. Army Intelligence Center of  
Excellence, Fort Huachuca
- **Brigadier General Dallen Atack**  
Assistant Adjutant General – Army,  
Utah National Guard







# SENTINEL LANDSCAPES

# The Sentinel Landscapes Partnership

**Western Regional Partnership (WRP) Principals' Meeting**

Plenary Session 1 – Sentinel Landscapes in the WRP Region: Success and Opportunity

Phoenix, AZ | 29 November 2017



# SENTINEL LANDSCAPES

## What are Sentinel Landscapes?

- Definition: Sentinel Landscapes are working or natural lands important to the nation's defense mission - places where preserving the working and rural character of key landscapes strengthens the economies of farms, ranches, and forests; conserves habitat and natural resources; and protects vital test and training missions conducted on those military installations that anchor such landscapes.
- Three fundamental components of a Sentinel Landscape:
  - At least one anchor military installation;
  - A defined landscape associated with the anchor installation's "mission footprint;" and
  - Articulated goals and desired outcomes.



# SENTINEL LANDSCAPES

## Why? The Need for Sentinel Landscapes

- Military testing, training, and operational missions on many military installations are compromised by incompatible development.
- Many USDA and DOI landowner assistance programs promote practices – farming, ranching, forestry, and conservation – that are compatible with military activities.
- When DoD, USDA and DOI programs are used in combination to promote compatible practices on lands near military installations, each agency's funds are leveraged to support national defense and the other key program objectives.
- Sentinel Landscapes are intended to produce three principal outcomes:
  - Align programs in well-defined landscapes of priority;
  - Encourage mutually beneficial land management practices; and
  - Further leverage state, local, and private/NGO support.



# SENTINEL LANDSCAPES

## How Are Sentinel Landscapes Implemented?







# SENTINEL LANDSCAPES

## Questions?

**Kristin Thomasgard-Spence**

Program Director

Readiness and Environmental Protection Integration (REPI) Program  
Office of the Assistant Secretary of Defense (Energy, Installations and  
Environment)

571.372.6835 (O)

571.236.3100 (BB)

[kristin.j.thomasgard-spence.civ@mail.mil](mailto:kristin.j.thomasgard-spence.civ@mail.mil)

[www.REPI.mil](http://www.REPI.mil)





# SENTINEL LANDSCAPES

## Backup Slides



# SENTINEL LANDSCAPES



Joint Base  
Lewis-McChord  
Sentinel Landscape



Camp Ripley  
Sentinel Landscape



Middle Chesapeake  
Sentinel Landscape



Fort Huachuca  
Sentinel Landscape

Eastern North Carolina  
Sentinel Landscape



Avon Park Air Force Range  
Sentinel Landscape



# SENTINEL LANDSCAPES

## What Are the Benefits of the Sentinel Landscape Designation?

- Benefits for DoD installation partnerships:
  - Defined space to focus attention and actions – defined footprint aligned with anchor installation and partner’s shared mission interests
  - Visibility among competing priorities – value through alignment with the Sentinel Landscapes branding and the expansion of that brand
  - Federal funding – ability to increase cost-sharing and funding leverage with a variety of Federal programs providing a suite of options for land protection, compatible use, and technical assistance; competitive advantage in funding allocations as a result of Sentinel Landscape status
  - Capacity – possible funding support for on-the-ground coordinator to facilitate access to Federal programs, work with partners, define specific footprint/prioritize investments, report progress/success
- Benefits for landowners:
  - Federal funding – access to coordinated delivery of Federal programs from multiple federal sources and competitive advantage in funding decisions as a result of participating in Sentinel Landscapes
  - Land owner choice – increased engagement opportunities with multiple Federal programs resulting from tiered level of participation and recognition, best matching landowner interests
  - Status – Conveyance of status to landowners voluntarily choosing to participate through mechanisms such as:
    - Formalized recognition program;
    - Enhanced/priority access to existing federal/state programs; or
    - Where feasible, tax credits, deductions, exclusions, or other similar monetary incentives.



# SENTINEL LANDSCAPES

## How Do I Become a Sentinel Landscape?

- The Sentinel Landscapes Federal Coordinating Committee issues a request for applications from prospective new Sentinel Landscapes on an ad hoc basis.
- Applicant Sentinel Landscapes must possess three fundamental components:
  - At least one anchor military installation;
  - A defined landscape associated; and
  - Articulated goals and desired outcomes.
- The Sentinel Landscapes Federal Coordinating Committee has determined additional criteria for selecting new Sentinel Landscapes based on each participating Federal agency's priorities.
- Applications are evaluated collectively by the Sentinel Landscapes Federal Coordinating Committee, with any new Sentinel Landscape designation requiring the consensus of the partner Federal agencies.
- The application process is iterative.





# SENTINEL LANDSCAPES

## What Are the Federal Agency Partners Doing to Promote Sentinel Landscapes?

- The partner Federal agencies have coordinated to promote the inclusion of legislative language in the 2018 National Defense Authorization Act that codifies the Sentinel Landscapes Partnership.
- Benefits of codifying the Sentinel Landscapes Partnership through legislation:
  - Provides a degree of permanence that enables USDA, DoD, and DOI to continue identifying overlapping mission priorities and leveraging resources to further collective goals.
- Proposed legislative language also allows for the repeal of Section 312(b) of the National Defense Authorization Act for Fiscal Year 2014, thereby making permanent the authority to use appropriated funds under 10 U.S.C. §2684a or the Sikes Act (16 U.S.C. §670c-1) as match for USDA or DOI conservation programs.
  - This authority has facilitated new opportunities to protect military readiness and the environment at more than 10 installations and ranges, in addition to providing an important source of matching funds.
  - Making this authority permanent would be beneficial to the missions of USDA, DoD, and DOI.



The Department of Defense's Readiness and Environmental Protection Integration (REPI) Program is a key tool for promoting innovative and land conservation partnerships that benefit national defense, neighboring communities and the environment.

Parachute training is halted when housing developments are built near drop sites



**80%** of military bases have surrounding development that is higher than the national average

Realistic combat training, pristine test environments, and operational capability are keys to keeping our service members safe. However, encroachment issues are creating obstacles that threaten military activities.



Flight testing, training, and operations are impeded by cellphone towers, wind farms, and developments

Weapons testing and training causes noise, dust, and smoke complaints from nearby communities

Urban sprawl decreases habitat and may cause Federally protected species to seek sanctuary on military lands

Night training is compromised when light pollution from nearby commercial areas spreads



# Sentinel Landscapes in the WRP Region

## Success and Opportunity

### Plenary Session

---

#### Plenary Leads:

- **Ms. Kristin Thomasgard-Spence**  
REPI Program Director, ODUSD (I&E)
- **Mr. Astor Boozer**  
Regional Conservationist for the West  
Region, NRCS
- **Mr. Jeffrey Jennings**  
Deputy to the Commanding General,  
U.S. Army Intelligence Center of  
Excellence, Fort Huachuca
- **Brigadier General Dallen Atack**  
Assistant Adjutant General – Army,  
Utah National Guard





## SENTINEL LANDSCAPES

# The Sentinel Landscapes Partnership

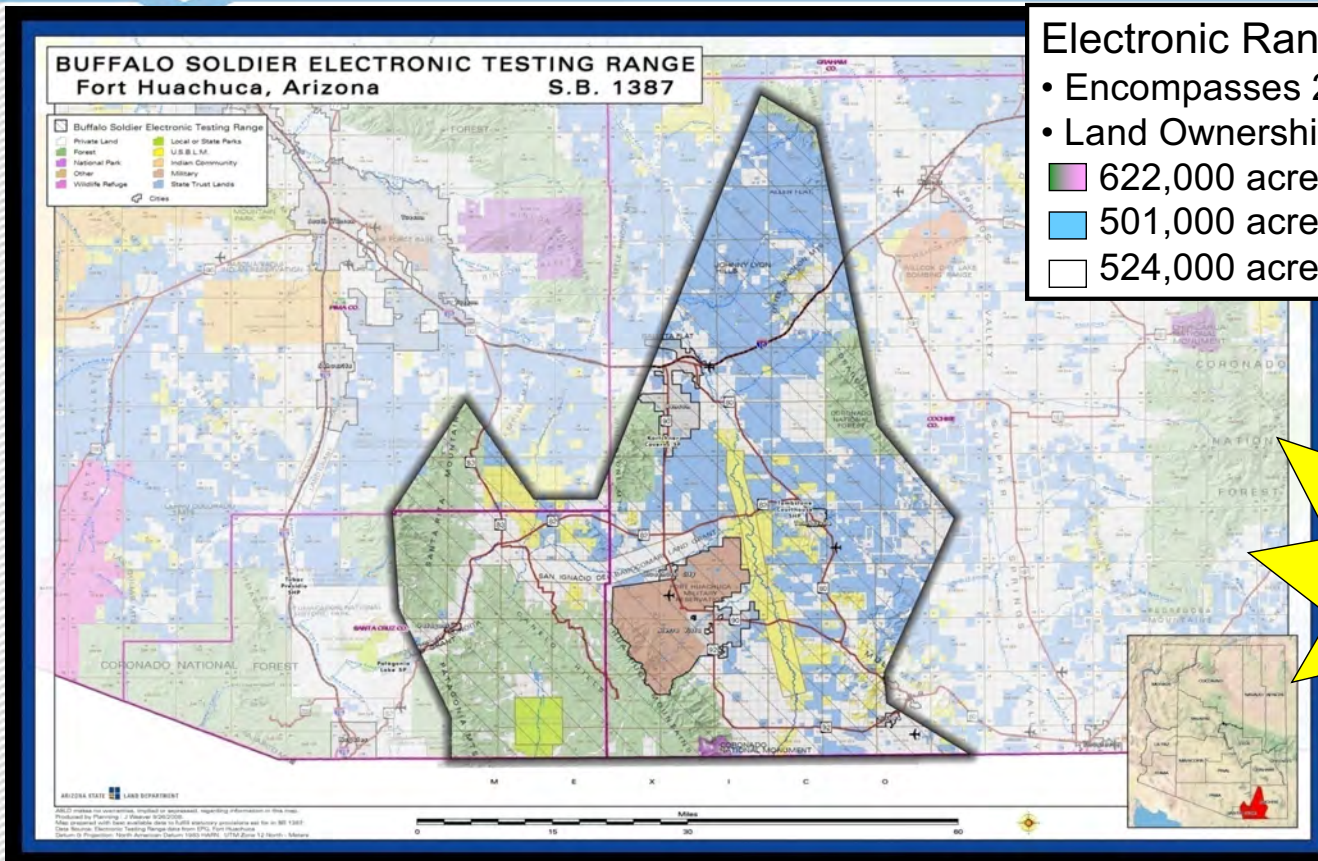
**Ft. Huachuca Sentinel Landscape Briefing to  
Western Region Partnership  
Principals' Meeting**

**29 November 2017**





# SENTINEL LANDSCAPES



## Electronic Range: "High Altitude Bowl"

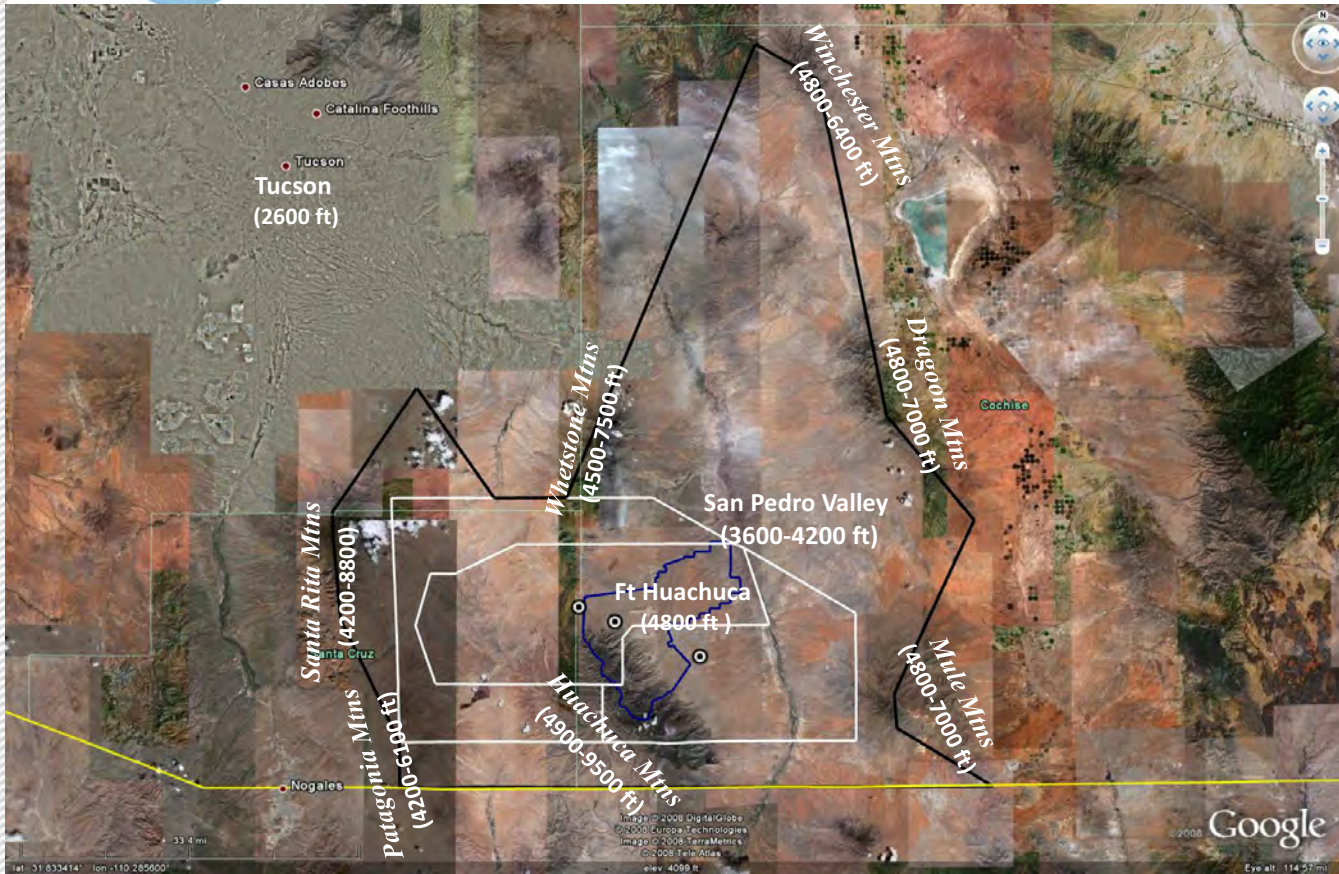
- Encompasses 2,500 sq. miles - 1.65M acres
- Land Ownership:
  - 622,000 acres Fed Land (DoD, BLM/DOI)
  - 501,000 acres State Trust Land
  - 524,000 acres Private Land

*Designated a Sentinel  
Landscape  
April 2015*





# SENTINEL LANDSCAPES



## Fort Huachuca

157 sq. mi.

## R2303 Military Restricted Airspace

964 sq. mi.

## Buffalo Soldier Electronic Test Range

2,500 sq. mi.





Ft. Huachuca Sentinel Landscape Partnership  
Our Purpose is.....

...enhance collaboration with our  
Federal and State Agency  
partners....







....to conserve open space that supports natural wildlife and sustains our ability to accomplish our military mission.....





...to preserve working landscapes that are the economic drivers that sustain our region and our rural community....

...while restoring our vibrant working lands and protecting critical habitat for threatened and endangered species.







## SENTINEL LANDSCAPES

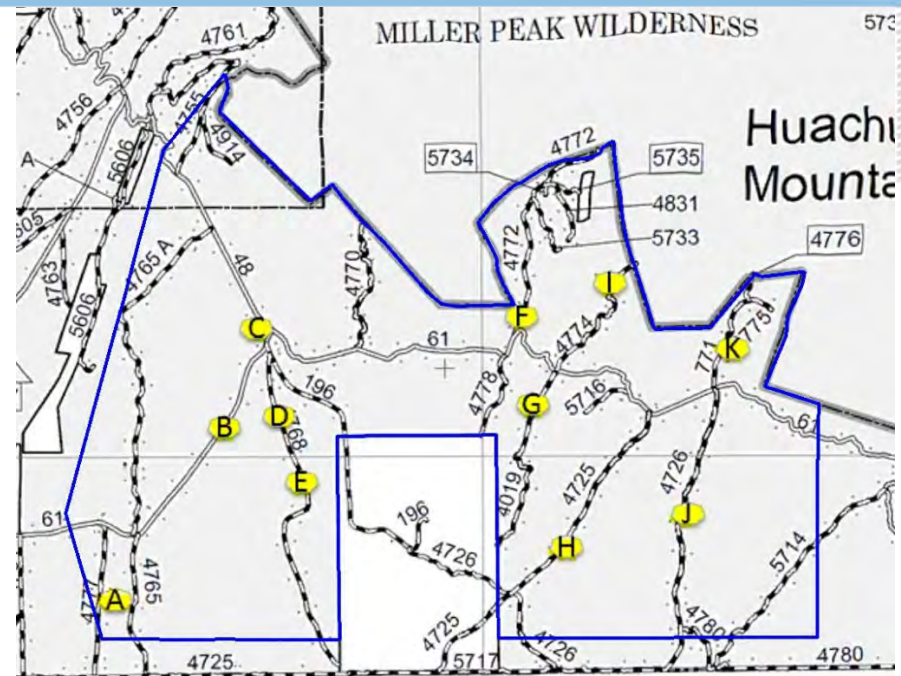
### Successes:

#### Electronic Test Range Expansion onto Adjacent USFS Lands

- Terrain: 14,635 acres
- Uniqueness: Naturally quiet electromagnetic zone shielded from Fort Huachuca and surrounding towns
- Accessibility: 40 miles of Forest Road
- Mission: Test and electronically jam military sensitive sensors
- 10 identified waypoints (A-F) used for dynamic distributed node network(s)

#### Increased Partner Agency Funding

- FY2007-17: Easement Funding share - DoD 87% Partner 13%
- FY2016-17: Easement Funding share - DoD 30% Partner 70%
- To date: over 66,000 acre of lands under conservation easement in the Sentinel Landscape





## SENTINEL LANDSCAPES

# Back-up Slides

# Fort Huachuca Sentinel Landscape Partners

Arizona Antelope Foundation  
Arizona Association of Conservation Districts  
Arizona Department of Agriculture  
Arizona Department of Environmental Quality  
Arizona Department of Forestry and Fire Management  
Arizona Game and Fish Department  
Arizona Land and Water Trust  
Arizona State Land Department  
Appleton-Whittell Research Ranch of the National Audubon Society  
Borderlands Restoration Group  
Bureau of Land Management  
City of Sierra Vista  
Cochise County  
Cochise Conservation and Recharge Network  
Fort Huachuca  
Fry Fire District





## SENTINEL LANDSCAPES

### Ft. Huachuca Sentinel Landscape – Objectives vs. DoD Lines of Effort (LOE)

- LOE 1: Develop a comprehensive large landscape conservation vision incorporating partner agency conservation programs and resources to connect conserved landscapes. (% continuous acres under development restriction)
- LOE 2: Focus technical assistance, resource management, and conservation funds on lands under, or adjacent to lands, protected using REPI resources in order to link conserved lands and increase opportunities for greater DoD mission flexibility. (% deed restricted lands conserved)
- LOE 3: Develop a comprehensive methodology to capture and credit habitat and natural resource improvement across the Sentinel Landscape, in order to reduce environmental restrictions on installation training ranges. (% increase in training land available on installation)
- LOE 4: Develop MOU's/Special Use Permits with USFS and other agencies to allow for expansion of DoD missions in adjacent federal lands on a limited basis to increase mission flexibility in the R2303 and BSETR. (% expansion training lands available to DoD on as needed basis)
- LOE 5: Resolve constraints with Federal/State Trust Land swap required procedures and effect a new streamlined, transparent, and cost effective process to serve as a viable option to mitigate potential future encroachment on key lands within the Sentinel Landscape.

#### Steering Committee Developed Objectives – March 2016

- Objective 1: Conserve open space while preserving working landscapes where appropriate, when feasible, from willing stakeholders (LOE 1)
- Objective 2: Natural resource improvement, compatible use & sustainability (including water) (LOE 2&3)
- Objective 3: Better collaboration to accomplish all missions, resource alignment & preserving economic drivers which sustain the region (LOE 4&5)





# Establishing the West Traverse Sentinel Landscape

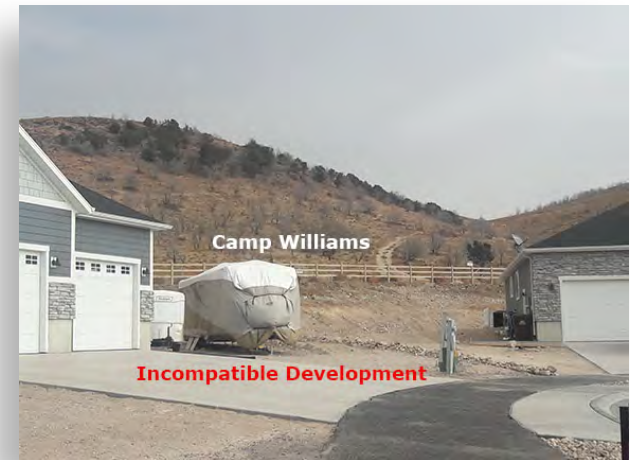
*Preserving open lands and forestalling incompatible development to protect the training mission  
of Camp Williams while enhancing recreational opportunities and quality of life for Utah*



# CAMP WILLIAMS



- Camp Williams, not dissimilar to military installations across the nation, was established in 1914 in an extremely remote area.
- Roughly 24,000 acres of training lands with live fire small arms, demolition, grenade, artillery, convoy ranges and facilities provides the Utah Army National Guard and other military forces and law enforcement agencies a robust & realistic training venue.
- Incompatible development, such as high density housing, can inhibit certain training activities which presents obstacles in achieving and maintaining readiness.
- Herriman City, Eagle Mountain, Saratoga Springs, Bluffdale, and Lehi are all experiencing explosive growth that is progressing inward towards the borders.





# CAMP WILLIAMS

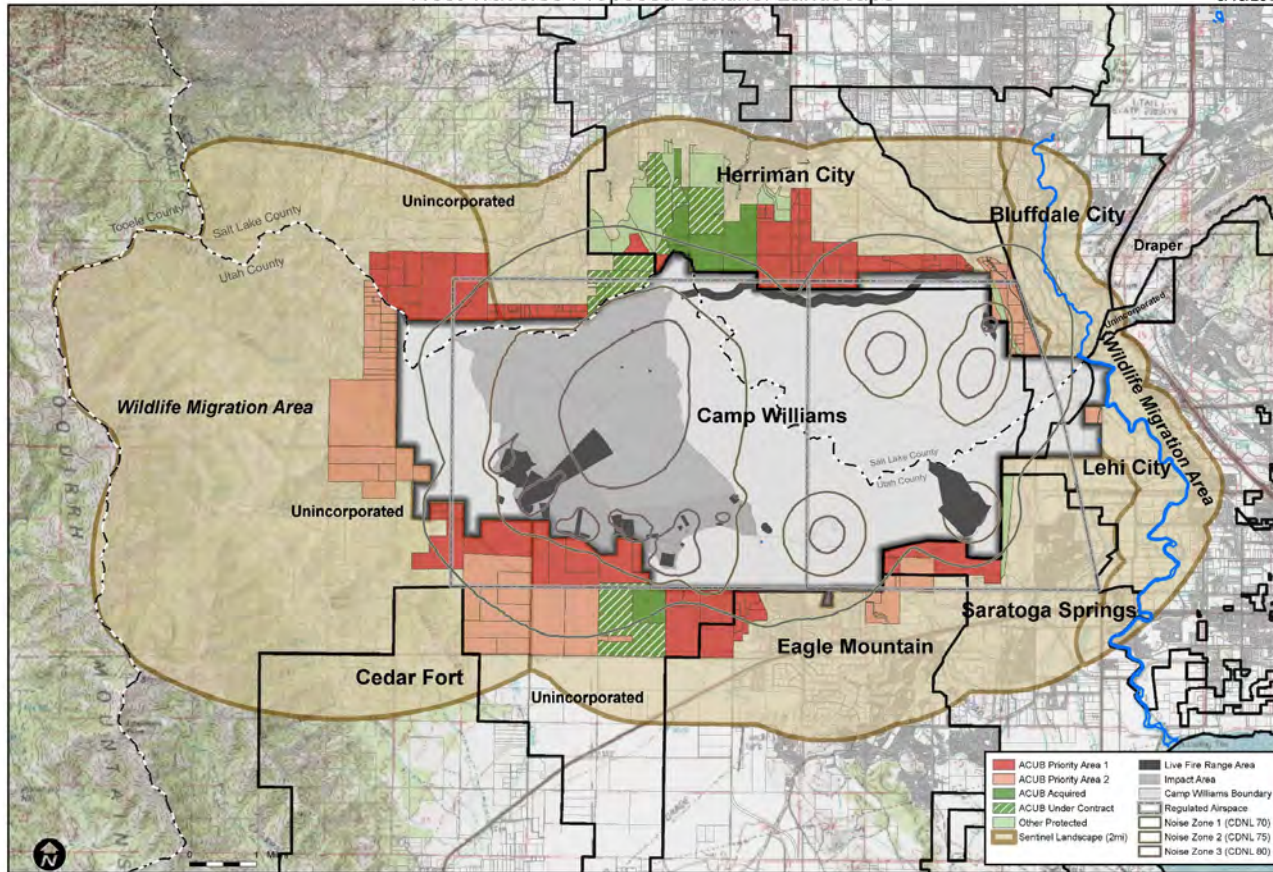


- In 2011, a Joint Land Use Study (JLUS) was conducted which brought Camp Williams and surrounding communities together in an effort to guide planning and development around Camp Williams.
- After several years of drafting a proposal, Camp Williams received approval from the Department of the Army in 2015 to participate in the Army Compatible Use Buffer (ACUB) program.
- As of 2015, the Camp Williams ACUB/REPI program has received \$20.1M in federal funds which has assisted in encumbering over 2,800 acres.
- The ***West Traverse Community Partnership*** was organized to bring key stakeholders together in a collaborative effort to protect vital training resources while preserving open spaces, farms, and recreation areas.



West Traverse Proposed Sentinel Landscape

8/15/2017



*Sentinel Landscapes* are lands that are important to the Nation's defense mission where preserving rural character, protecting habitat, and conserving natural resources in turn guards vital training lands that anchor such landscapes.





# SENTINEL LANDSCAPE



- In progress is a bill to be introduced in the 2018 Utah State Legislative session providing a State designation titled the “*West Traverse Sentinel Landscape*”.
- A state designated Sentinel Landscape provides:
  - The state’s support codified in statute.
  - Formalizes the effort by establishing a committee to focus and synchronize priorities.
  - Provides assurance to potential donors, partners, and landowners with a structured and legitimate process.
  - A possible pathway to obtain a federal designation.



# Questions/Discussion

CONTACT INFORMATION: BG Dallen Atask, 801-432-4238 or [dallen.s.atack.mil@mail.mil](mailto:dallen.s.atack.mil@mail.mil)



COL Tyler B. Smith, 801-432-4440 or [tyler.b.smith18.mil@mail.mil](mailto:tyler.b.smith18.mil@mail.mil)



West Traverse Community Partnership: [www.westtraverse.info](http://www.westtraverse.info)

# Sentinel Landscapes in the WRP Region Success and Opportunity Plenary Session

---

## Plenary Leads:

- **Ms. Kristin Thomasgard-Spence**  
REPI Program Director, ODUSD (I&E)
- **Mr. Astor Boozer**  
Regional Conservationist for the West  
Region, NRCS
- **Mr. Jeffrey Jennings**  
Deputy to the Commanding General,  
U.S. Army Intelligence Center of  
Excellence, Fort Huachuca
- **Brigadier General Dallen Atack**  
Assistant Adjutant General – Army,  
Utah National Guard





# **Energy Policy Changes and Implications for the WRP Region**





# Energy Policy Changes and Implications for the WRP Region Plenary Session

---

This panel will highlight:

- Recent energy-related policy changes concerning energy production and generation such as:
  - Recent DOI Secretarial Orders regarding expediting energy
  - Infrastructure and NEPA reviews
  - Changes in DOE policies
  - State perspectives on changing energy resources
  - Efforts related to the Regional Periodic Reviews of previously designated energy corridors pursuant to Section 368 of the Energy Policy Act of 2005.

# Energy Policy Changes and Implications for the WRP Region Plenary Session

---

## Plenary Leads:

- **Mr. Doug Little**  
Deputy Assistant Secretary for  
Intergovernmental and External Affairs,  
DOE
- **Ms. Karen Douglas**  
Commissioner, California Energy  
Commission
- **Mr. Alexander Herrgott**  
Associate Director for Infrastructure,  
Council on Environmental Quality,  
Executive Office of the President
- **Mr. Brian Steed**  
Deputy Director, Programs and Policy,  
Bureau of Land Management





# ENERGY POLICY IN CALIFORNIA

Karen Douglas, Commissioner  
California Energy Commission

November 29, 2017





# CALIFORNIA'S CLIMATE POLICIES

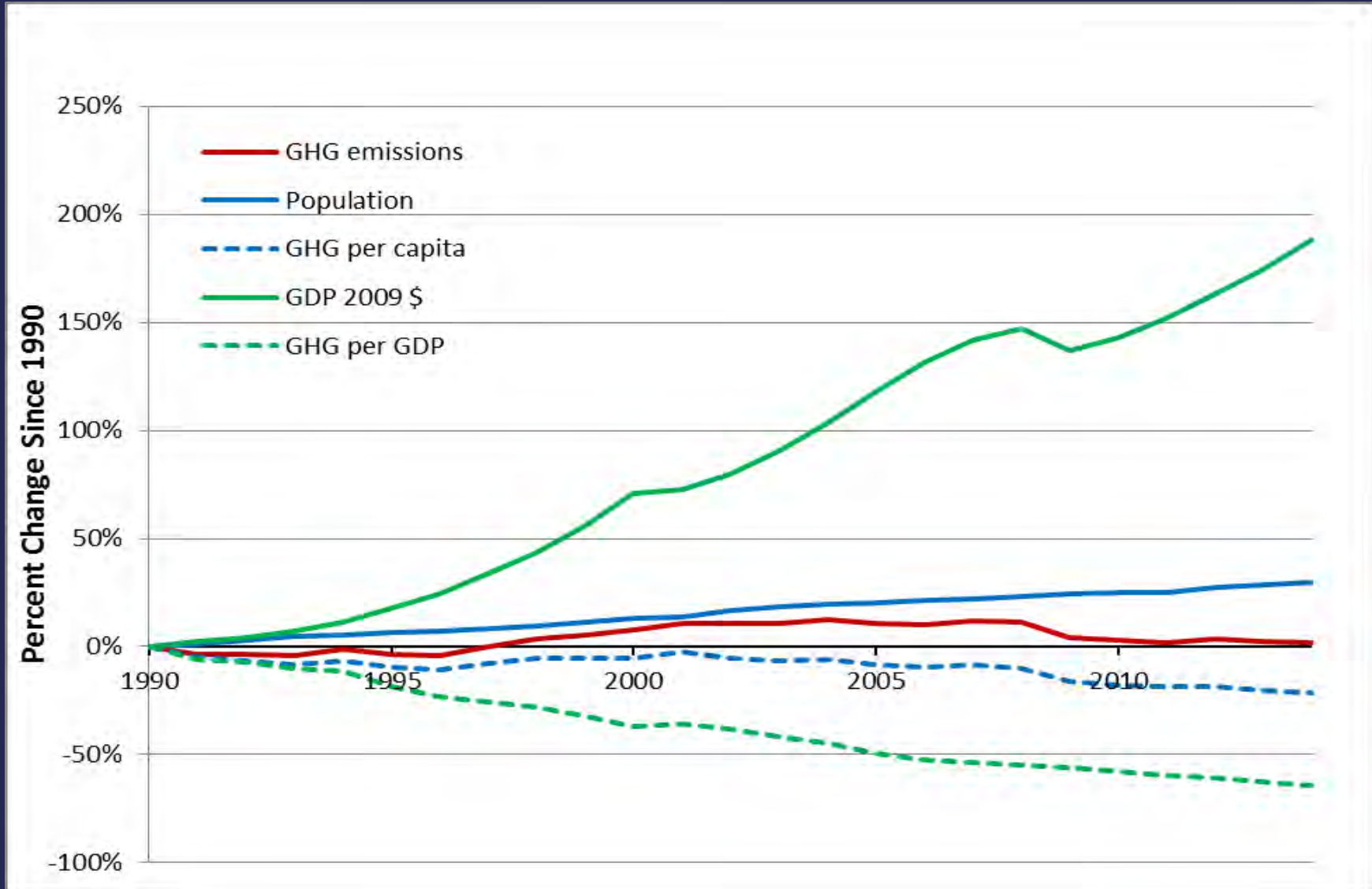
- Greenhouse Gas Emission Reduction Goals
  - 1990 levels by 2020
  - 40% below 1990 levels by 2030
  - 80% below 1990 levels by 2050
- Renewables Portfolio Standard
  - 20% by 2017
  - 33% by 2020
  - 50% by 2030





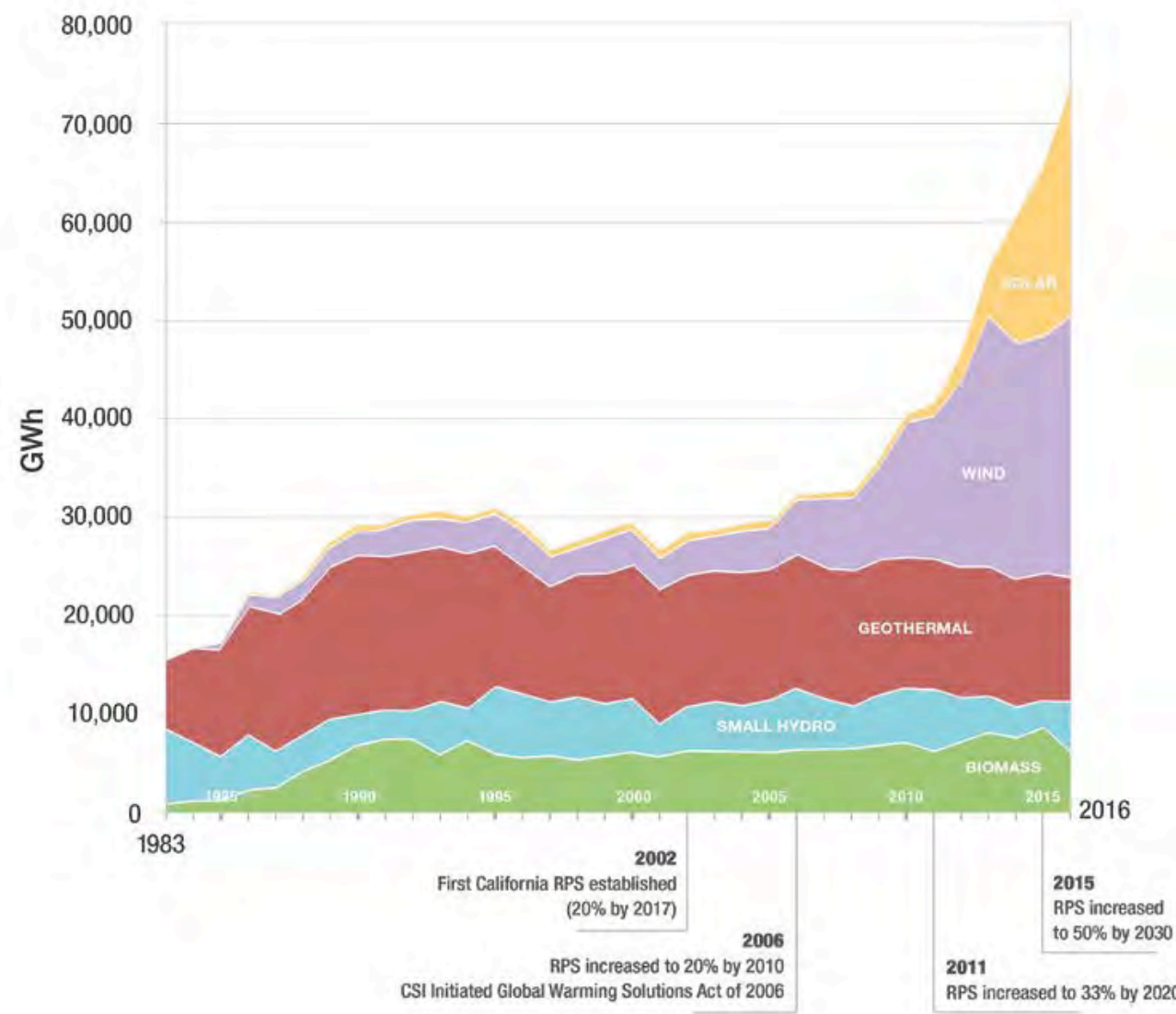


# DECLINE IN CALIFORNIA'S GREENHOUSE GAS EMISSIONS



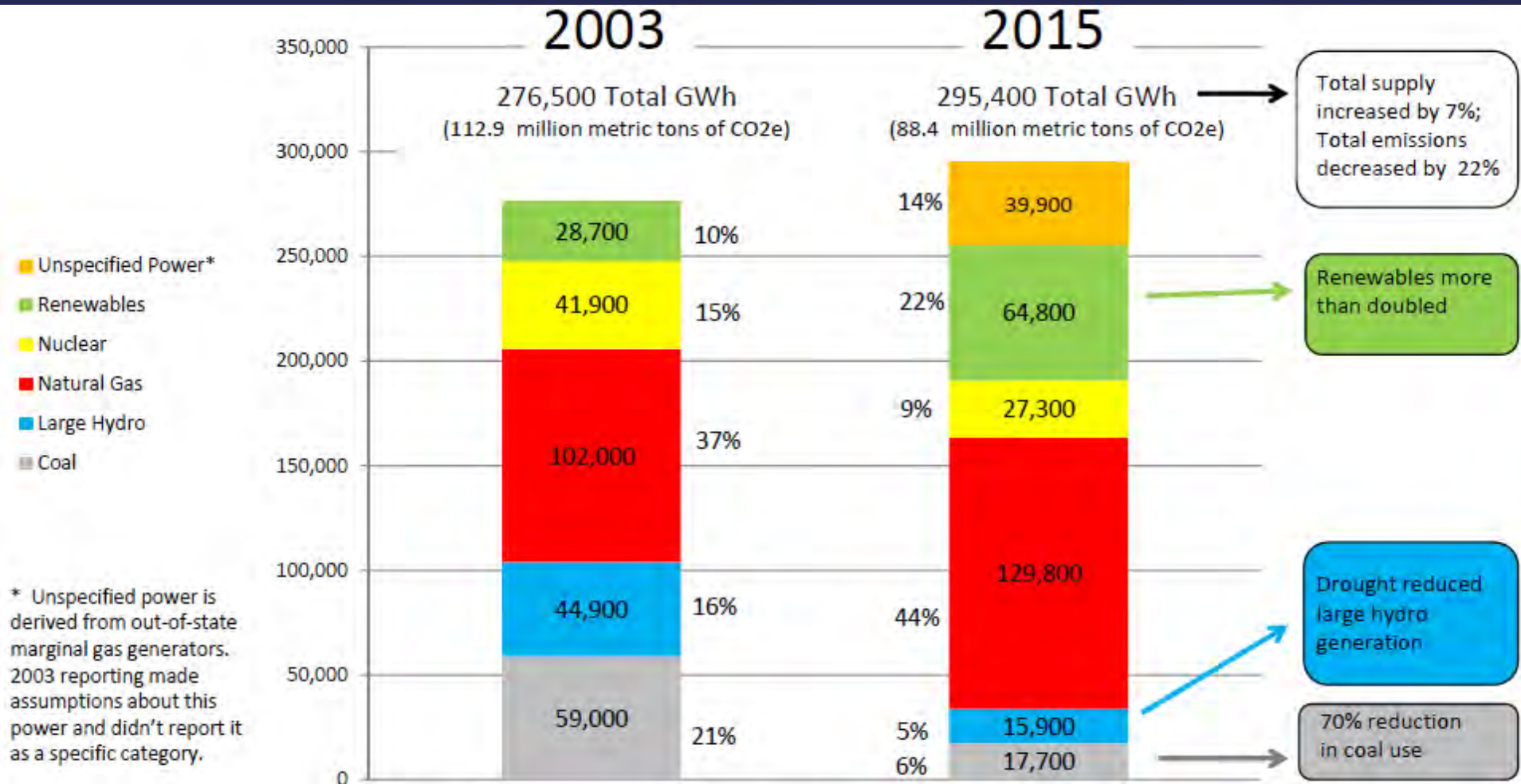


# INSTALLED RENEWABLE CAPACITY BY RESOURCE TYPE





# CALIFORNIA POWER MIX CHANGES







# RENEWABLE ENERGY PLANNING

- Desert Renewable Energy Conservation Plan
- San Joaquin Valley Least Conflict Solar
- Tribal
- Military
- Offshore Renewable Energy Planning to Support the BOEM-California Task Force
- RETI 2.0
- Section 368 Energy Corridors







# WHAT'S NEXT FOR CALIFORNIA?

- Greenhouse Gas Emission Reductions
- Integrated Resource Planning
- Renewables
- Responsive Demand and Storage
- Technology Advancements
- Partnerships with States and Countries





THANK-YOU!

---

Thank-you!

Karen Douglas, Commissioner  
California Energy Commission

For more info go to:

<http://www.energy.ca.gov/>

# Energy Policy Changes and Implications for the WRP Region Plenary Session

---

## Plenary Leads:

- **Mr. Doug Little**  
Deputy Assistant Secretary for  
Intergovernmental and External Affairs,  
DOE
- **Ms. Karen Douglas**  
Commissioner, California Energy  
Commission
- **Mr. Alexander Herrgott**  
Associate Director for Infrastructure,  
Council on Environmental Quality,  
Executive Office of the President
- **Mr. Brian Steed**  
Deputy Director, Programs and Policy,  
Bureau of Land Management

