



Public Lands Liaison Agent Program (PLLA)

Customs and Border Protection

❖ **Office of Field Operations (OFO) - 24,000 Officers**

➤ Air Ports, Land Ports, Sea Ports

❖ **Air and Marine Operations (AMO) - 1,200 Agents**

➤ Air and Marine Support to USBP and Other partners

➤ Largest Civilian Air and Marine Force in the world: (267 Air) (283 Marine)

❖ **United States Border Patrol (USBP) - 21,370 Agents**

➤ Interdiction and Enforcement Operations between the ports of entry, coastal littoral areas of the United States, its outlying possessions, and territories.

➤ Law Enforcement Authority - Anywhere in the U.S.



U.S. Customs and
Border Protection

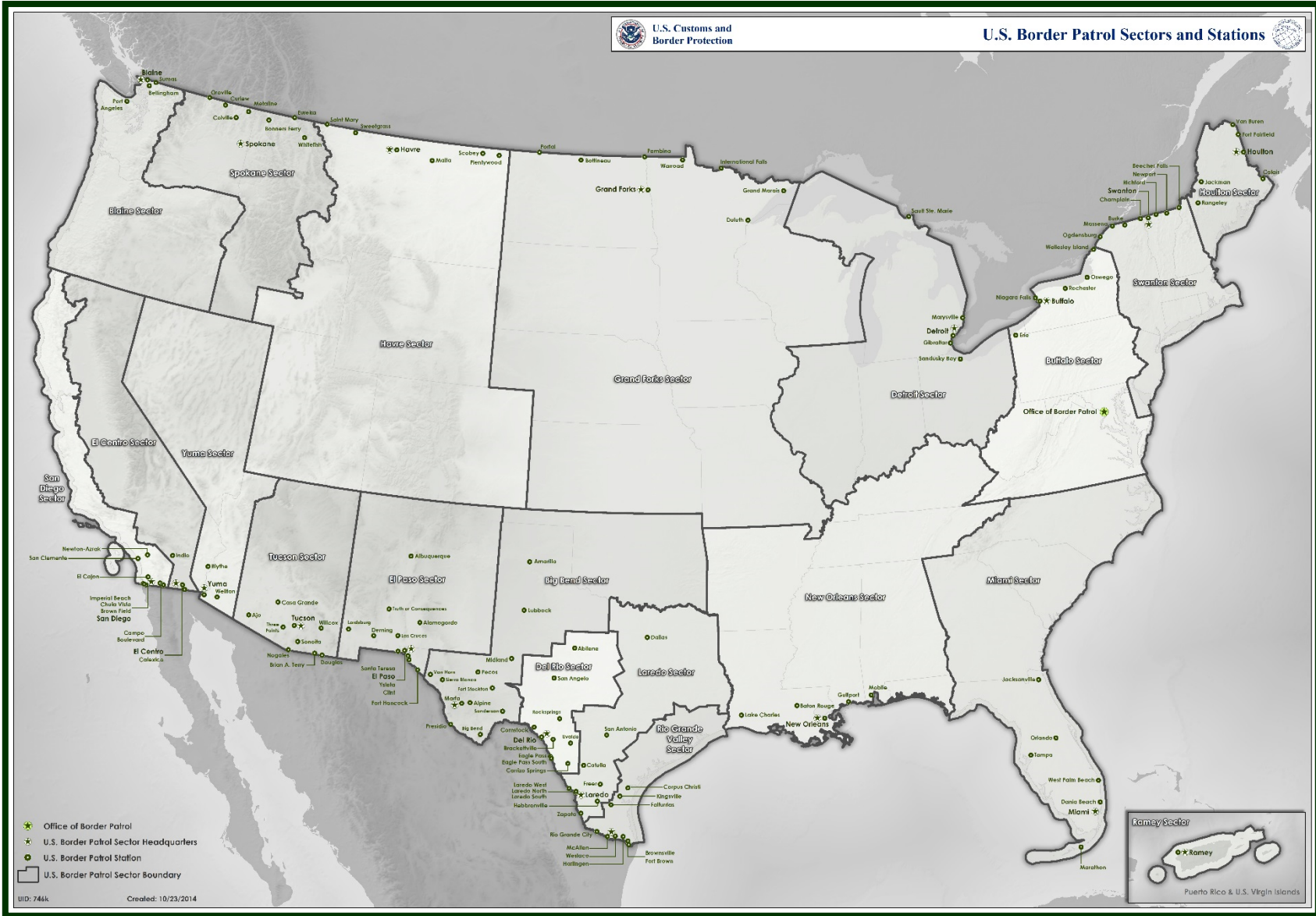
PLLA History

- ❖ The Public Lands Liaison Agent (PLLA) program is national in scope.
- ❖ **December 2005** - Established to enhance operational capability
 - Supports Border Patrol Strategic Plan
 - 2006 MOU between DHS-DOI-USDA
- ❖ **May 2009** - Chief of the U.S. Border Patrol signed PLLA Program into national policy.
- ❖ All Sector Chiefs have on-staff PLLAs to **Actively Engage:**
 - Federal, State, Local, Tribal and NGOs.

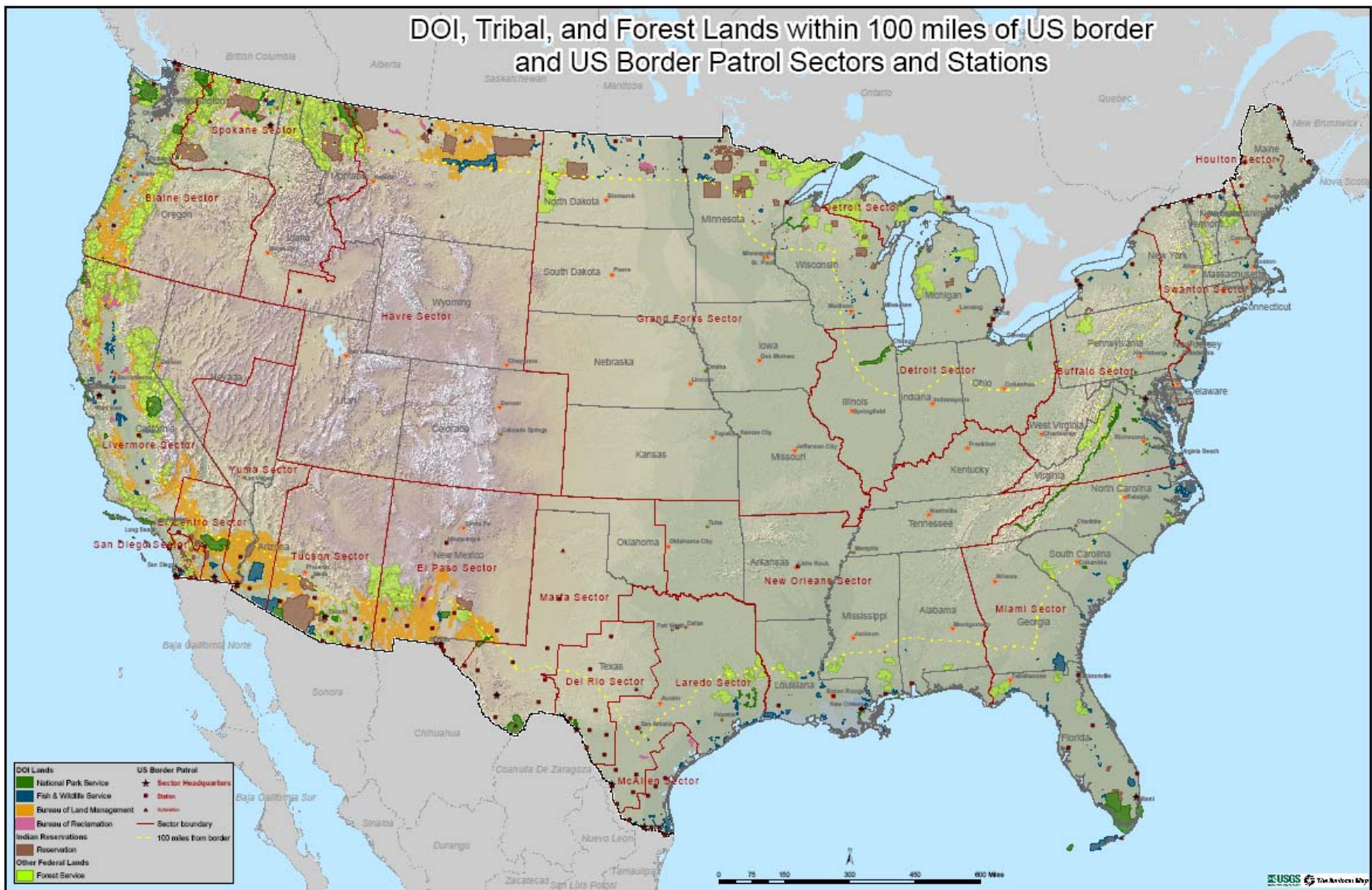
WHOLE COMMUNITY APPROACH



U.S. Customs and
Border Protection



DOI, Tribal, and Forest Lands within 100 miles of US border and US Border Patrol Sectors and Stations



U.S. Customs and Border Protection



Secure The U.S. Border
Protect Environmental and Cultural Resources for Future Generations



U.S. Customs and
Border Protection

Border Patrol Strategic Plan

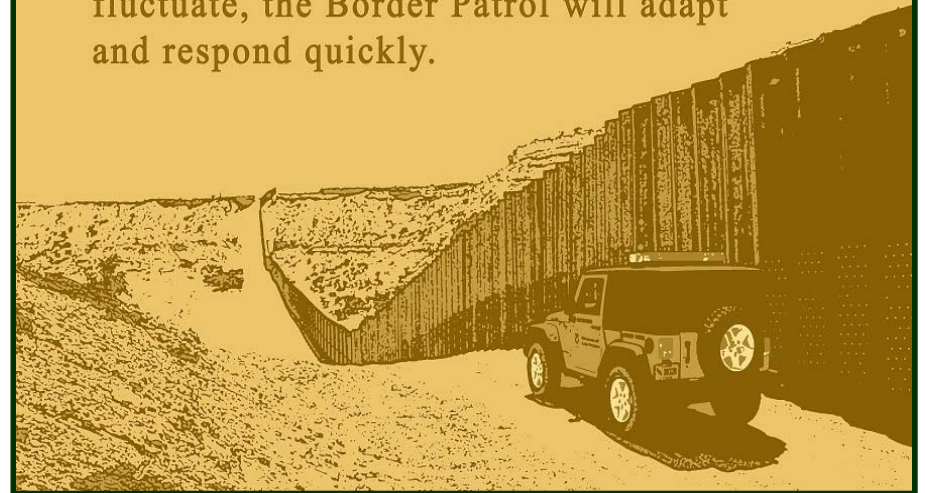
- ❖ 1994 BP Strategy
 - Prevention thru Deterrence
- ❖ 2004 BP National Strategy
 - Resource Based
- ❖ 2012-2016 BP Strategic Plan
 - Risk Based
- ❖ Manage risk through the use of *Information, Integration, and Rapid Response*
- ❖ Leverage the Border Patrol's greatest capabilities to combat the greatest risk

PILLARS OF THE STRATEGY

INFORMATION - Gather and analyze all available information to provide situational awareness and intelligence development.

INTEGRATION - Operational planning and execution with our international, Federal, state, local and tribal law enforcement.

RAPID RESPONSE - As threats evolve and risks fluctuate, the Border Patrol will adapt and respond quickly.



U.S. Customs and
Border Protection

Whole Community Approach

PLLA Roles, Responsibilities, and Duties

Border Patrol Sector Chief's SME on Environmental and Cultural Issues

Major Duties Include:

- ❖ **Active Engagement** with personnel from DOI, USDA, Other Federal, State, Local, Tribal, and NGOs involved in land management, resource protection and access issues.
- ❖ **Dialogue** includes: collaboration to identify mutually beneficial activities, outcomes, and joint environmental education, border security and border safety training.
- ❖ **Facilitation** of communication up and down the chain of command to accomplish goals and objectives.



U.S. Customs and
Border Protection

2006 Memorandum of Understanding

- ❖ March 2006 - Signed by: DHS-DOI-USDA
- ❖ Nationwide geographic and jurisdictional in scope.

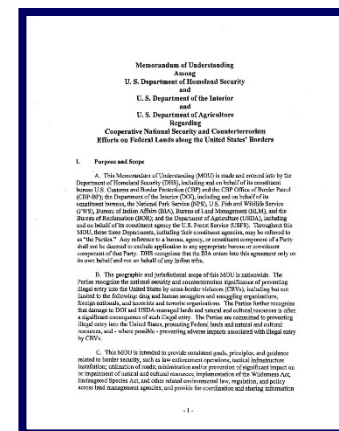
SECTION IV – A: Common Goals, Policies, and Principles

- ❖ Secure the borders and address emergencies involving health and safety, and preventing or minimizing environmental damage arising from illegal entries on public lands.

SECTION IV – B: Responsibilities and Terms to DOI & USDA

SECTION IV – C: Responsibilities and Terms to DHS/CBP

Most important - relationships developed to accomplish our mission.



U.S. Customs and
Border Protection

PLLA Training Program

- ❖ National Environmental Policy Act (NEPA)
- ❖ Endangered Species Act (ESA)
- ❖ Wilderness Act (WA/WSA)
- ❖ National Historic Preservation Act (NHPA)
- ❖ Archeological Resources Protection Act (ARPA)
- ❖ Archeology and Paleontology for Law Enforcement Officers (A&P)
- ❖ Tribal Consultation
- ❖ Intelligence Coordination
- ❖ Other Specialized Training



U.S. Customs and
Border Protection

Outreach and Education Initiatives

- ❖ Environmental & Cultural Stewardship Training (ECST) - Annually
- ❖ Public Lands Liaison Agent Training Program (PLLATP)
 - Capstones (A&P, NEPA, ESA, Wilderness) - Sector Specific
 - Trickle Down Education Initiative led by Sector PLLAs
- ❖ ECST Outreach and Education Initiative - Pilot Program (YUM/TCA)
 - Targets new arriving personnel; provides sector specific information
 - FOB personnel - Holistic and Situational
- ❖ Border Security and Safety Briefings - Pilot Program (YUM/TCA)
- ❖ U.S. Border Patrol Academy requirement - ECST



Protecting Our National Treasures...



Field Communication / Messaging

- ❖ Origin
- ❖ Purpose
- ❖ Deployment
- ❖ Future Uses:
 - Archeology
 - Paleontology
 - Wilderness Act
 - Scientific Research
 - Notifications

I am the largest cat in the Americas.

HAVE YOU SEEN ME?

I HAVE THE MOST POWERFUL JAWS OF ALL CATS. I AM ABLE TO PIERCE THROUGH LARGE MAMMAL SKULLS AND TURTLE SHELLS.

Jaguar (*Panthera onca*)

- The Jaguar is an endangered species found within the Tucson Sector.
- The Jaguar's range is from Southern AZ & Southwestern NM to Argentina.
- Since 2011, one male Jaguar has been detected by trail cameras near the US Border with Mexico (in the Santa Rita and Whetstone mountains).
- If you see, photograph, or otherwise have documentation of a Jaguar, please forward the information to obpplla@cbp.dhs.gov

ACTUAL PHOTO OF JAGUAR WITHIN TUCSON SECTOR

10.22.2013 20:09:28

The slide features a silhouette of a jaguar at the top, a trail camera photo of a jaguar in a forest, and a close-up photo of a jaguar's face.

Desert Massasauga Rattlesnake

OUR DESERTS

- Desert Massasaugas are the smallest rattlesnake species native to the southwestern U.S.
- At birth, this rare, ecologically unique and tiny species measures just a few inches long and could coil-up on a fifty-cent piece.
- The Desert Massasauga is found in desert grasslands, shrubland habitats, including shortgrass prairie, sandsage grasslands, shinnery oak and Chihuahuan desertscrub.

While on patrol, if you safely photograph a species that interests you, please forward it to OBPPLA@CBP.DHS.GOV. Your submission may be included in an upcoming "Our Deserts" IDS slide with some interesting facts about the species.

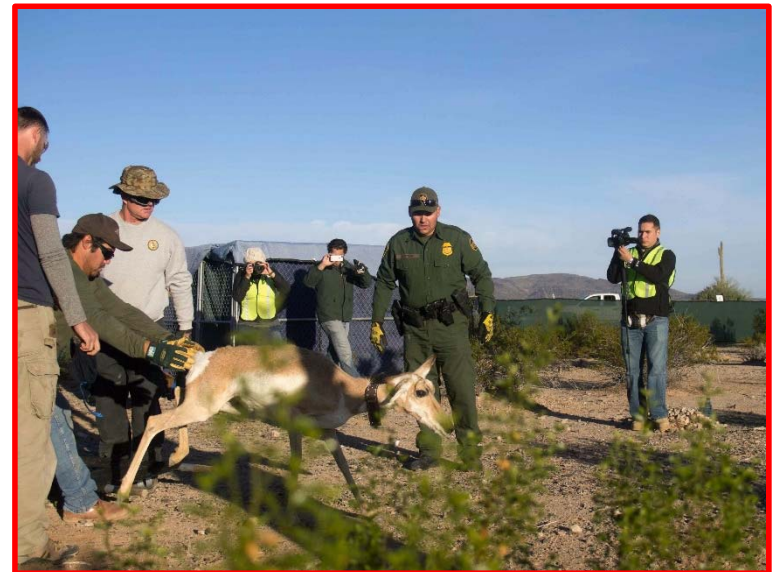
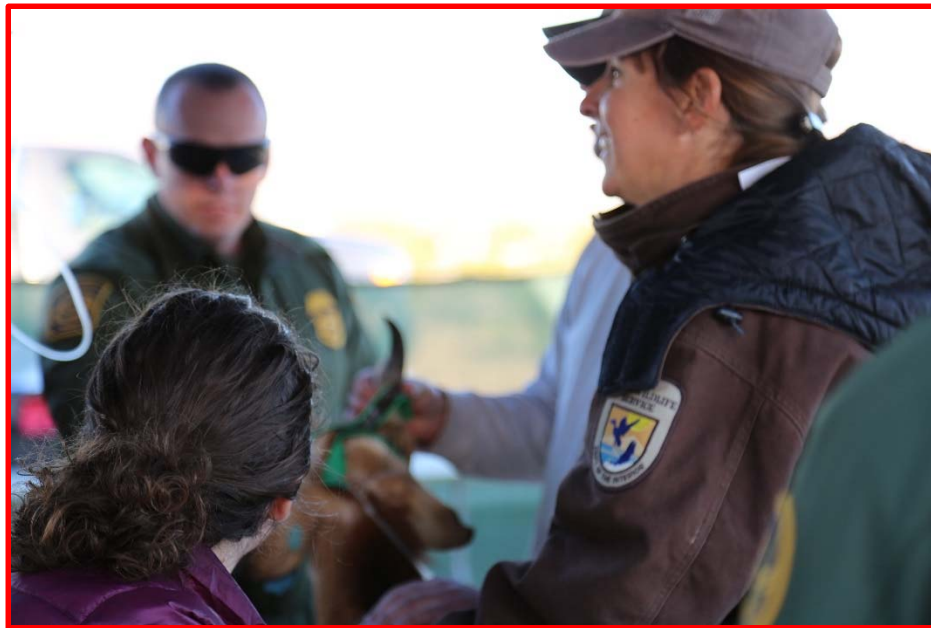
The slide includes three photographs of the Desert Massasauga Rattlesnake in various poses and settings.



U.S. Customs and
Border Protection

Strengthening Endangered Species

- Annual Sonoran Pronghorn Roundup
- CPNWR/OPCNM, KNWR



U.S. Customs and
Border Protection

Communications Interoperability

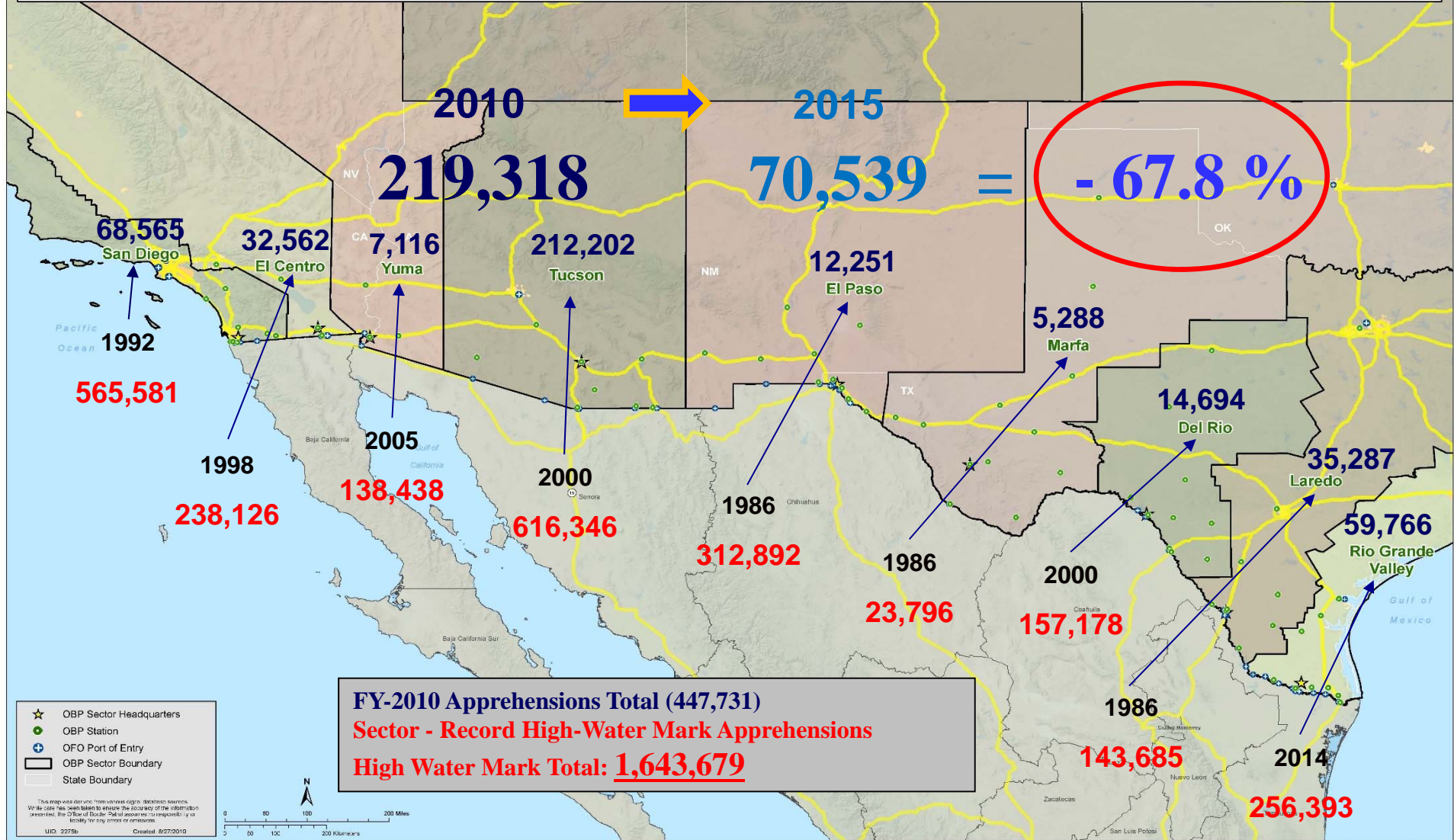
❖ 2008/2012- Secure Communications MOU - DHS/DOI/USDA



U.S. Customs and Border Protection



Southwest Border



Arizona Corridor Deaths - 2010

252



U.S. Customs and
Border Protection

Arizona Corridor Deaths - 2015

68



U.S. Customs and
Border Protection

Rescue Beacons

- ❖ Strategically Located
 - Outside Wilderness
 - Death & Rescue Patterns
- ❖ Low Signature
 - Low Intensity Light
- ❖ Environmentally Friendly
 - Solar Powered
 - Relocatable
- ❖ Cost Effective
 - \$3800.00 each
- ❖ Proven Life Saver!



U.S. Customs and
Border Protection



Joint Operations & Training



Summary / Questions?



RAFAEL CANO
United States Border Patrol
National Public Lands Liaison
rafael.i.cano@dhs.gov
202-325-3315