



DRAFT DESERT RENEWABLE ENERGY CONSERVATION PLAN

*Western Regional Partnership
January 28, 2015*



DRECP - Where We Are in the Process?



DESERT RENEWABLE ENERGY CONSERVATION PLAN

- Initiated DRECP planning process in 2008
- Public stakeholder group 2010-2013
- Science advisors convened in 2010 & 2012
- DOD clearinghouse process 2012 to Present
- Preliminary alternatives comparison in 2012
- Public Draft released September 26, 2014



DRECP Purpose & Goals

DESERT RENEWABLE ENERGY CONSERVATION PLAN

The Draft DRECP:

- A long-term adaptable plan
- Streamlines renewable energy project review and approval
- Conserves sensitive species
- Conserves other resources
- Conservation designations on BLM land
- Covers 22.5 million acres



The Draft DRECP was prepared by a partnership of state and federal agencies:

- California Energy Commission
- California Department of Fish and Wildlife
- U.S. Bureau of Land Management
- U.S. Fish and Wildlife Service

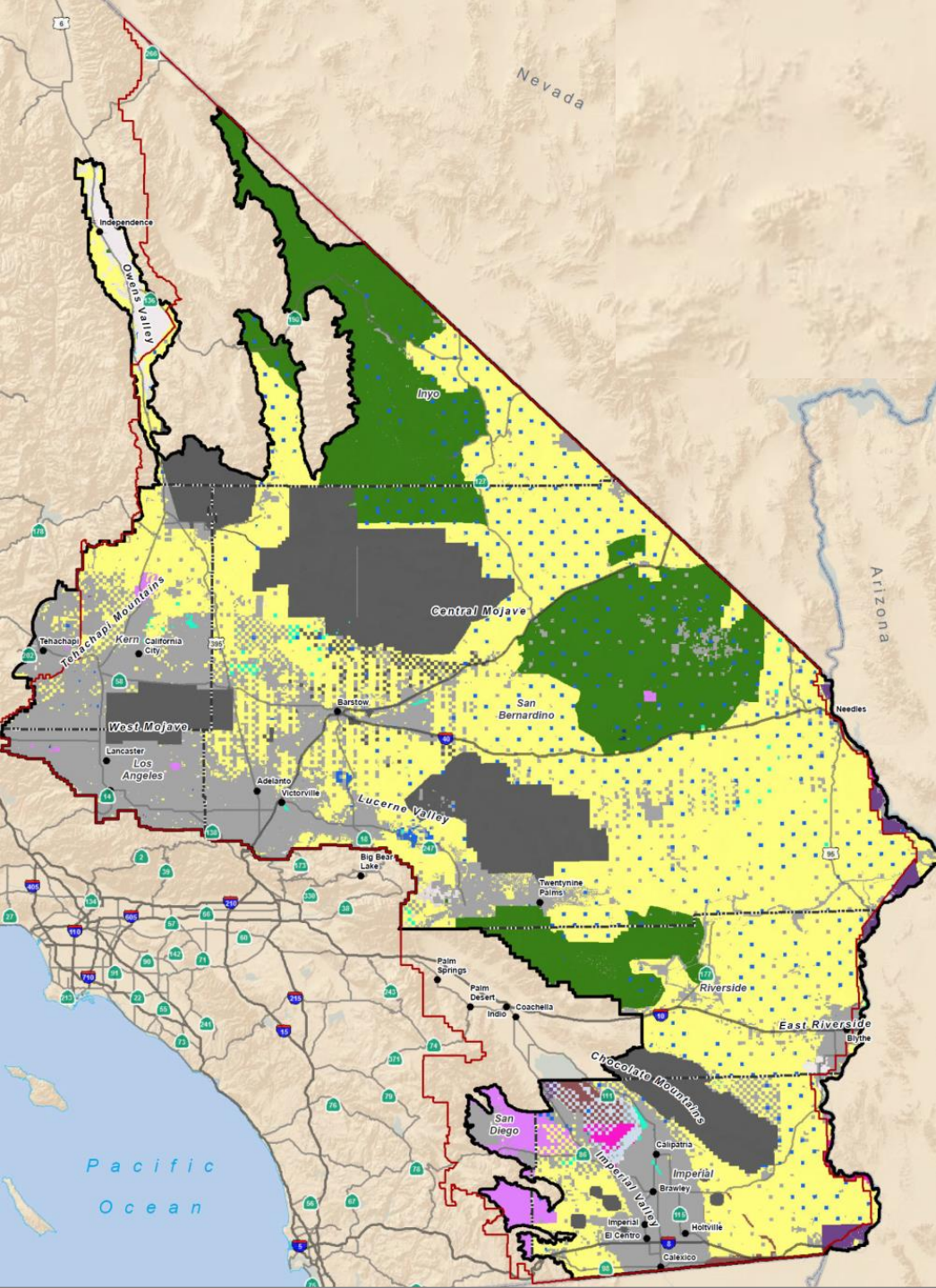




General Overview

As proposed, the DRECP would:

- Help California and the nation meet renewable energy and greenhouse gas emission reduction goals
- Identify suitable areas for siting of renewable energy projects, compatible with conservation of species and habitat, recreation, cultural, and visual values, etc.
- Identify National Conservation Lands in the California Desert Conservation Area with ecological, cultural & scientific values
- Identify suitable areas for biological and cultural conservation, management, and enhancement



DRECP Planning Area Boundary
 CDCA Plan Boundary
 County Boundary

Land Ownership

Federal Lands

- United States Bureau of Land Management
- U.S. Department of Defense
- United States Bureau of Reclamation
- United States Department of Agriculture
- United States Fish and Wildlife Service
- United States National Park Service

State Lands

- California Department of Fish and Wildlife
- California Department of Parks and Recreation
- California State Lands Commission
- Other State Lands

Other Lands

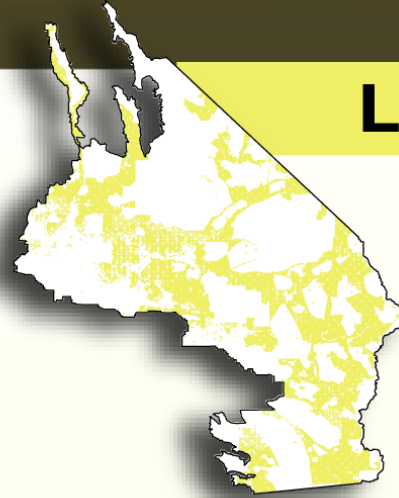
- Tribal Lands
- Private

County	Nonfederal	Federal	Total Acres
Imperial County	1,071,000	1,704,000	2,775,000
Inyo County	320,000	2,668,000	2,987,000
Kern County	925,000	821,000	1,746,000
Los Angeles County	625,000	55,000	680,000
Riverside County	301,000	1,846,000	2,147,000
San Bernardino County	2,075,000	9,907,000	11,982,000
San Diego County	267,000	200	268,000
Grand Total			22,585,000

DRECP Plan Components



- A BLM Land Use Plan Amendment (LUPA)



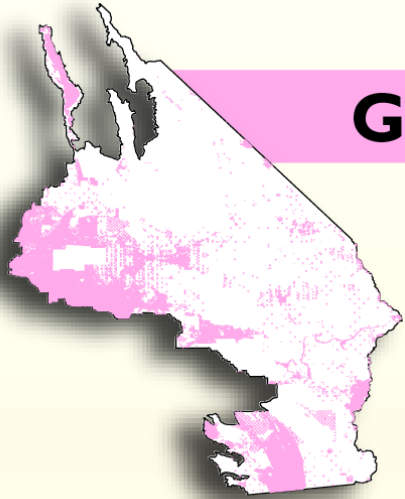
LUPA Lands

Land Use Plan Amendment
Agency: Bureau of Land Management (BLM)
Total Acreage: 9,834,000

GCP Lands

General Conservation Plan
Agency: US Fish & Wildlife Service
Total Acreage: 5,420,000

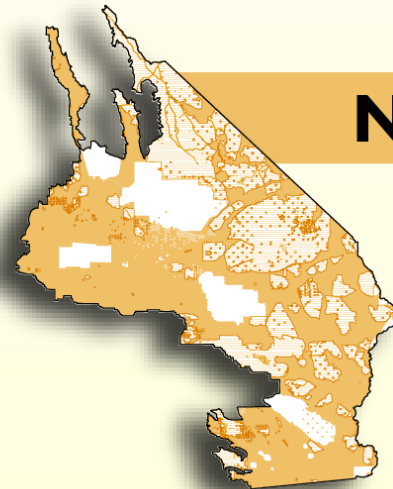
- A General Conservation Plan (GCP) covering nonfederal lands



NCCP Lands

Natural Communities Conservation Plan
Agency: California Dept. of Fish & Wildlife
Total Acreage: 18,986,000

- A Natural Community Conservation Plan (NCCP)



DRECP Plan Area



DESERT RENEWABLE ENERGY CONSERVATION PLAN

Local Government Involvement

7 Counties

- Imperial
- Inyo
- Kern
- Los Angeles
- Riverside
- San Bernardino
- San Diego

4 Ways to Join the DRECP

- Informal
- Formal
- 2 Permittee Options



DRECP Covered Activities



DRECP Covered Activities

Pre-construction and construction activities

Operation and maintenance activities

Decommissioning of Renewable Energy Projects

- Renewable energy development within DFAs
 - Solar
 - Wind
 - Geothermal
- Transmission development within and outside DFAs
- Conservation and compensation actions in reserve areas



DRECP Energy Planning

DESERT RENEWABLE ENERGY CONSERVATION PLAN

Renewable Energy Designations

DFAs:

- Areas available for renewable energy projects with development incentives

Study Areas:

- Lands that could be appropriate for development, but require further study
 - Special Analysis Areas
 - Future Assessment Areas
 - DRECP Variance Lands





- Energy Resource Considerations
 - Energy Resource Locations
 - Energy Resource Quality
 - Industry Proposals for Development Areas
- Energy Planning Assumptions
 - 20,000 MW new renewable generation
 - Plan through 2040; maintain a trajectory to 2050 GHG Reduction Goals

DRECP Energy Planning - Transmission



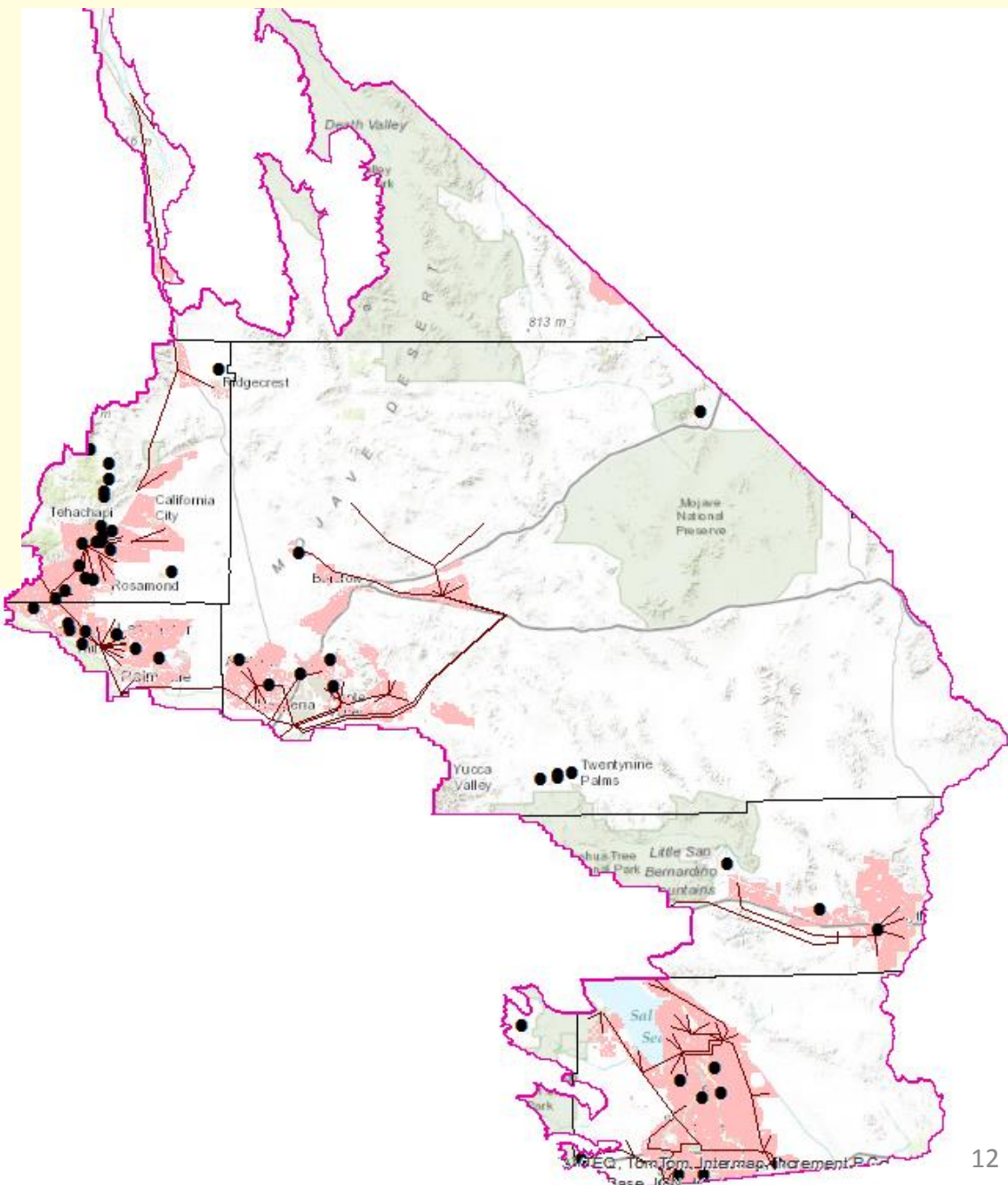
DESERT RENEWABLE ENERGY CONSERVATION PLAN

- Conceptual Transmission Plan for Each Alternative
- Provided by the Transmission Technical Group (TTG) Consisting of Transmission Planners from: SCE, IID, LADWP, SDG&E, PG&E, CAISO, CEC and DRECP Consultant team
- Transmission Planning Inputs from DRECP Planning Assumptions

DRAFT DRECP - PREFERRED ALTERNATIVE: DFAs, TTG Conceptual Transmission & Conservation

- Planning Assumption – 20,000 MW New Renewable Generation
- Transmission Assumption – 15,000 MW
- DFAs – 2+ Million Acres
- Study Area Lands – 183,000 Acres
- Project Impact – 177,000 Acres
- Project Compensation – 284,000
- Operational Impact Mitigation

- 37 covered species
- 31 covered natural communities
- ~ 4 million acres National Conservation
- ~ 2 million acres ACEC/Wildlife Area



Biological Conservation Strategy



DESERT RENEWABLE ENERGY CONSERVATION PLAN

Biological Conservation Strategy

- Conserve and Compensate for Covered Species
- Landscape Conservation
- Connectivity and Refugia for Climate Change



Environmental Analysis

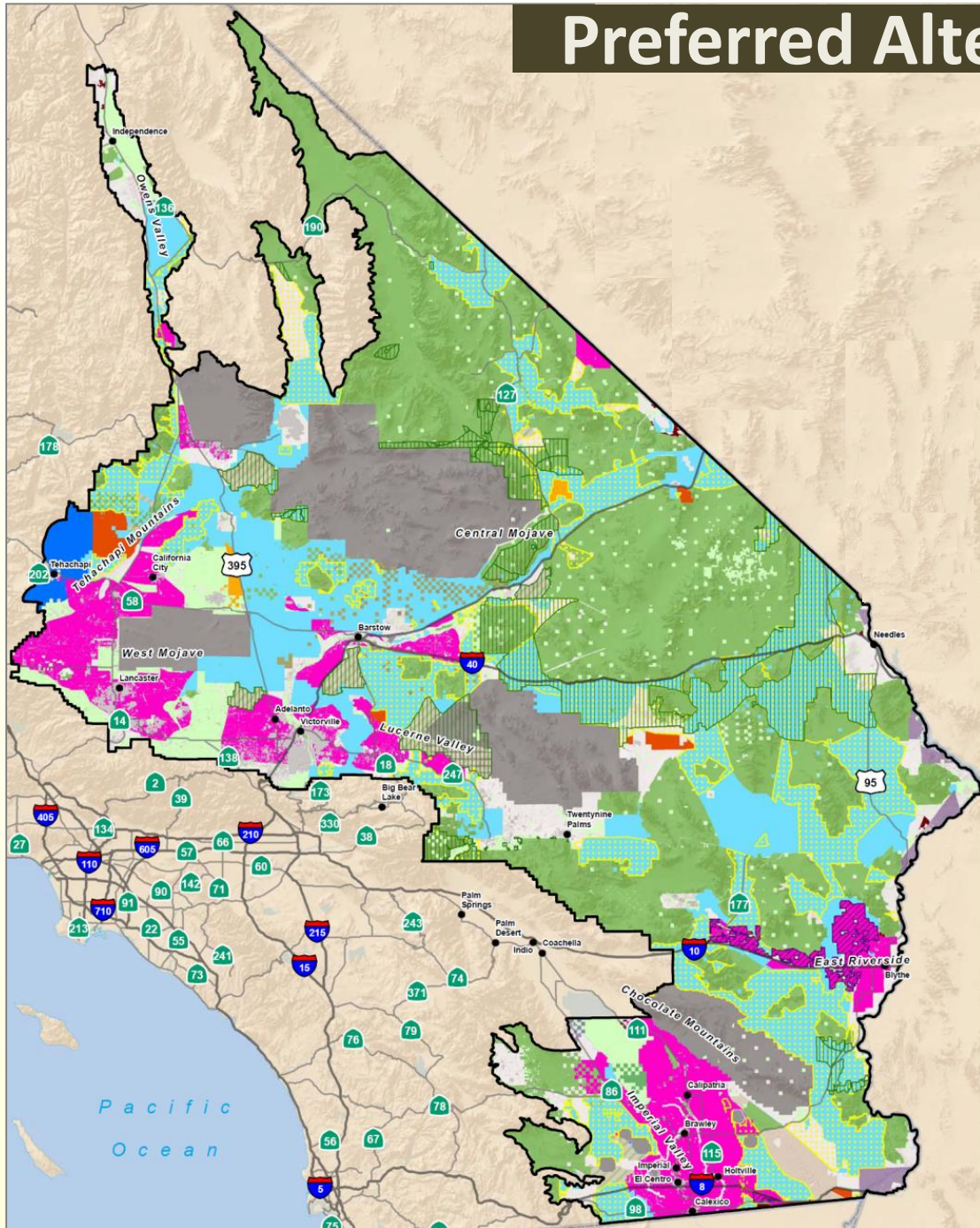


DESERT RENEWABLE ENERGY CONSERVATION PLAN

23 Resource Areas - Impacts considered in combined state & federal environmental analysis

Air Quality	BLM Land Designations, Classifications, Allocations, and Lands with Wilderness Characteristics**
Meteorology and Climate Change	Mineral Resources
Geology and Soils	Livestock Grazing**
Flood Hazard, Hydrology, and Drainage	Wild Horses and Burros**
Groundwater, Water Supply, and Water Quality	Outdoor Recreation
Biological Resources	Transportation and Public Access
Cultural Resources	Visual Resources
Native American Interests	Noise and Vibration
Paleontological Resources	Public Safety and Services
Land Use and Policies	Socioeconomics and Environmental Justice
Agricultural Land and Production	Department of Defense Lands and Operations**
BLM Lands and Realty— Rights-of-Way and Land Tenure**	

Preferred Alternative



Renewable Energy Development

- Development Focus Areas
- Study Area Lands
- Future Assessment Areas
- DRECP Variance Lands

DRECP Plan-wide Reserve Design Envelope

- Existing Conservation**
- Legislatively and Legally Protected Areas
 - Military Expansion Mitigation Lands
- BLM Proposed Land Use Plan Amendment Designations**
- National Landscape Conservation System
 - Areas of Critical Environmental Concern
 - Wildlife Allocation
- Conservation Planning Areas**
- Conservation Planning Areas*

Other Lands

- Impervious and Urban Built-up Land
- Military
- Open OHV Areas - Imperial Sand Dunes
- Open OHV Areas
- Johnson Valley OHV Shared Use Area
- Tribal Lands
- Solar Energy Zones
- Proposed Feinstein Bill
- DRECP Plan Area Boundary

