

Section 368 Energy Corridors

Energy Policy Act of 2005

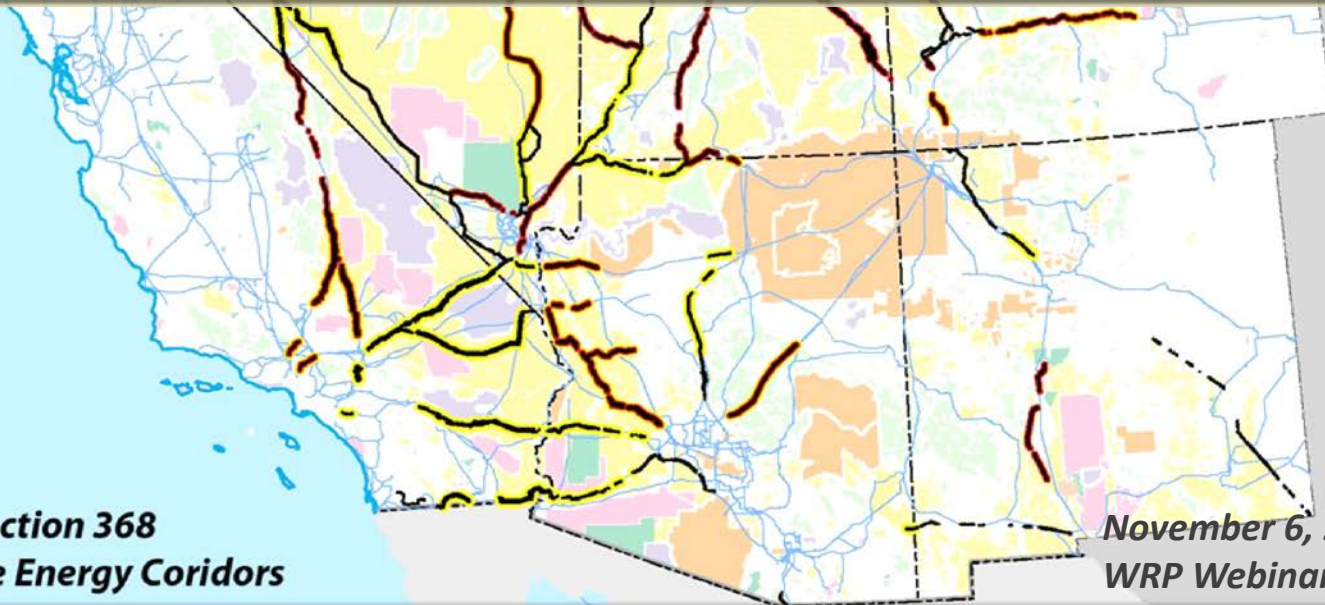
Points of Contact:

BLM - Georgeann Smale, WO-301 Realty Specialist, gsmale@blm.gov

USFS - Reggie, Woodruff, Lands Program Manager, rwoodruff@fs.fed.us

West-wide Energy Corridors Website:

<http://www.corridoreis.anl.gov>



Section 368
West-wide Energy Corridors

November 6, 2017
WRP Webinar



Background: Section 368 Energy Corridors

Established under the 2005 Energy Policy Act:

- ✓ *Energy corridors in AZ, CA, CO, ID, MT, NV, NM, OR, UT, WA, WY*
- ✓ *For future siting of oil, gas, and hydrogen pipelines, and electricity transmission and distribution lines*

- ✓ *BLM 2009 ROD: 5,000 Miles / 92 Land Use Plan Amendments*
- ✓ *USFS 2009 ROD: 990 Miles / 38 Land Use Plan Amendments*



Background: Section 368 Energy Corridors

Sec 368 Energy Corridors:

- Preferred (not mandated) locations for future projects
- Defined widths (typically 3,500') & compatible uses
- Interagency Operating Procedures (IOPs) - to improve consistency across agencies



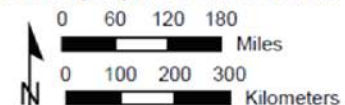
Section 368 Energy Corridors and Electrical Transmission Lines

- Transmission Line¹
- International Boundary
- Designated Section 368 Corridor
- Corridor of Concern²
- Locally Designated³
- Tribal Land
- Federal Ownership**
 - Bureau of Land Management
 - Bureau of Reclamation
 - Department of Defense
 - Fish and Wildlife Service
 - National Park Service
 - Other
 - US Forest Service

¹Energy infrastructure data source: Platts. Copyright 2016 by McGraw Financial.

²Corridors of concern were identified by the plaintiffs in a lawsuit following designation of the Section 368 corridors, and the nature of the concern is briefly stated in a settlement reached by the participants. See <http://corridoreis.anl.gov/news/index.cfm#settlement> for more information.

³Locally designated corridors were designated in either BLM or FS land management plans prior to also being designated as Section 368 corridors.

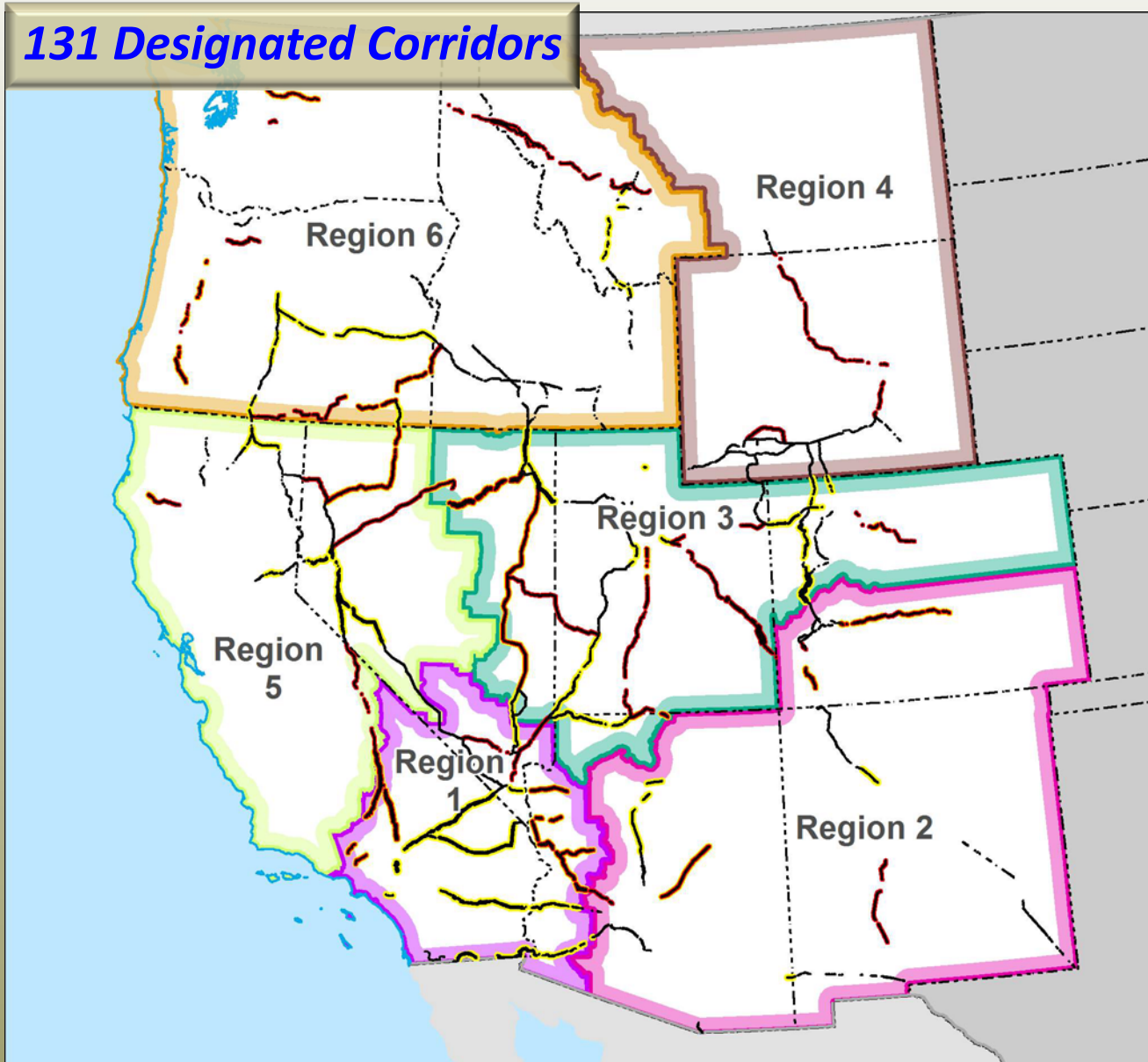


CS079



Background: Section 368 Energy Corridors

131 Designated Corridors

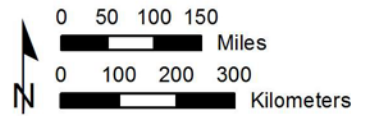


Regions for Review of Section 368 Energy Corridors

-  International Boundary
-  State Boundary
-  Designated Section 368 Energy Corridor
-  Corridor of Concern¹
-  Locally Designated²

¹Corridors of concern were identified by the plaintiffs in a lawsuit following designation of the Section 368 energy corridors, and the nature of the concern is briefly stated in a settlement reached by the participants. See <http://corridoreis.anl.gov/news/index.cfm#settlement> for more information.

²Locally designated corridors were designated in either BLM or USFS land management plans prior to also being designated as Section 368 energy corridors.



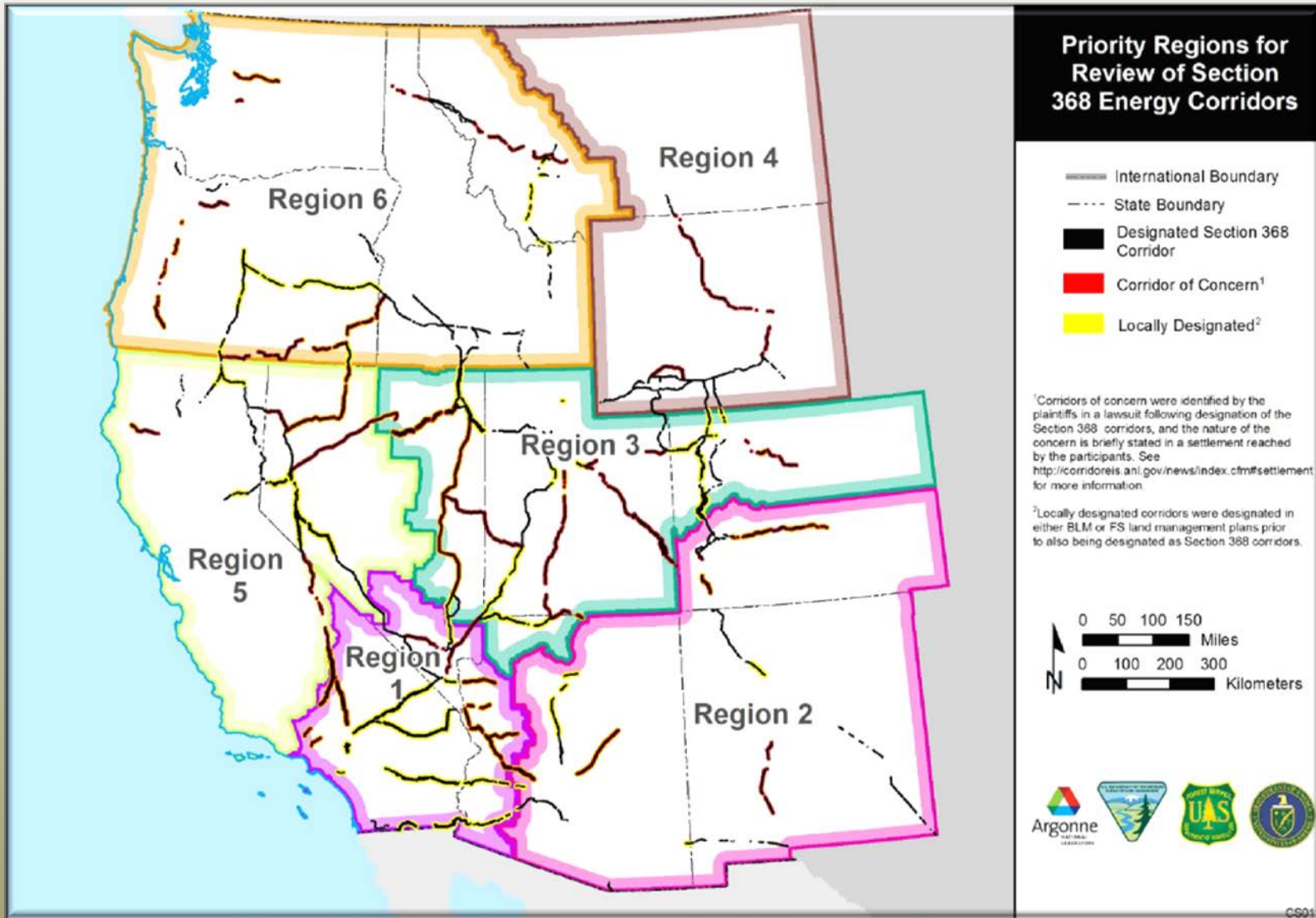
Background: 2012 Settlement Agreement

BLM, USFS, and DOE entered into a Settlement Agreement in 2012, response to a lawsuit brought by multiple plaintiffs –

- ***Formed Interagency Workgroup***
- ***Required to conduct Regional Reviews, to:***
 - ***Identify new information relevant to corridors***
 - ***Conduct Regional Reviews to identify potential corridor revisions, deletions, or additions***
 - ***Convey to line officers for consideration during subsequent land use planning***
 - ***Identify needed changes to IOPs***



Sec 368 Regions



CS011

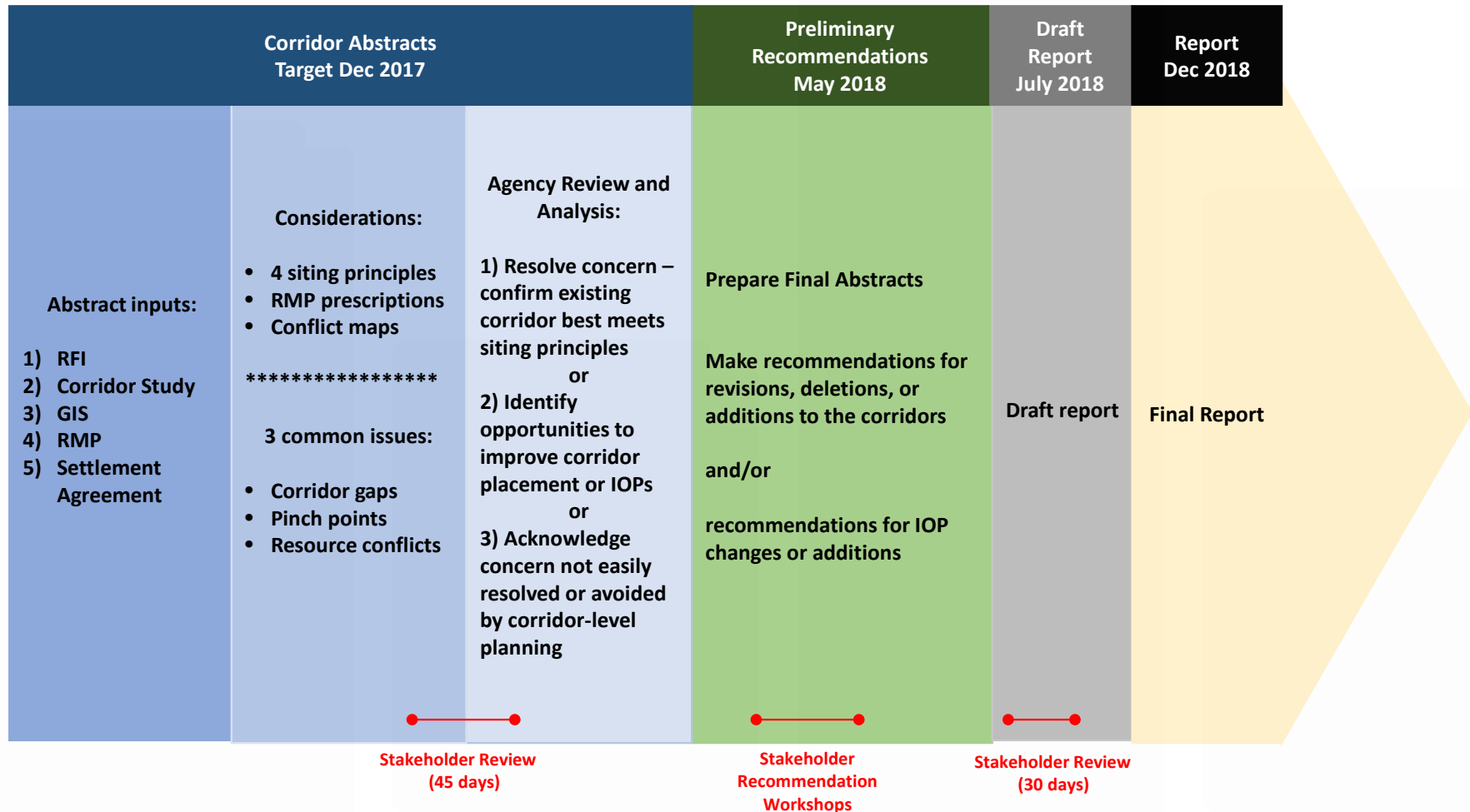


Regional Review Schedule Targets

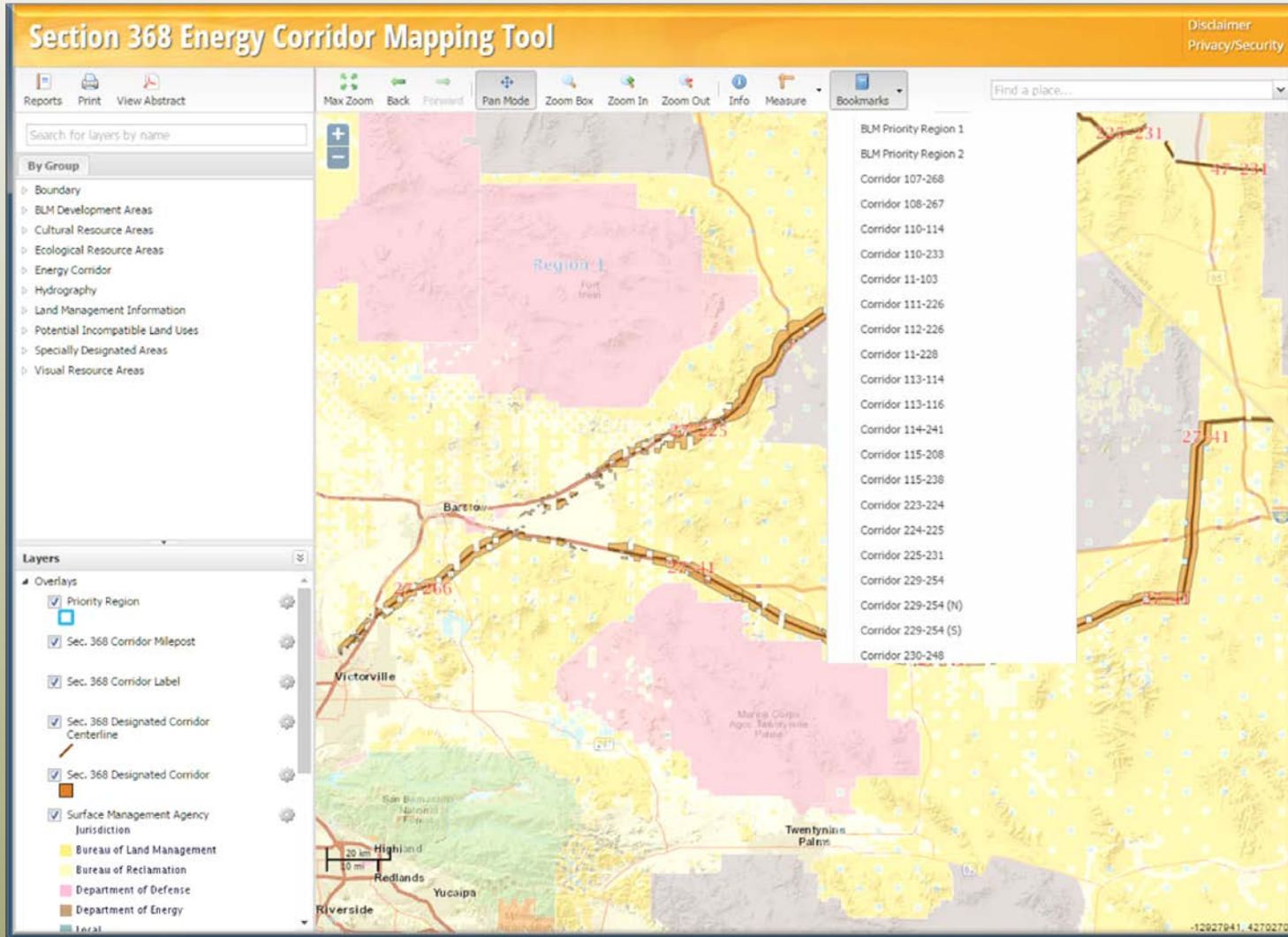
Sec 368 Regions	Duration of Review	Start	Finish
Region 1 (CA, AZ, NV)	18 months	Jun 2016	Spring 2018
Regions 2 & 3 (AZ,NM,CO,UT, NV)	15 months	Aug 2017	Dec 2018
Region 4 (MT, WY, ID) and Region 5 & 6 (OR, WA, CA)	12 months	Jan 2019	Dec 2019



Sec 368 Review Process



Sec 368 Mapping Tool – register and log-on



Tools to Facilitate Stakeholder Understanding & Critical Input



Developing Corridor Abstracts to Document Known Concerns

Corridor 30-52

Palo Verde - Palm Springs

Introduction

Corridor 30-52 extends west-east along Interstate 10 through the western suburbs of Phoenix in central Arizona, most of its extent in California, and 5,280 ft-wide pipeline projects. The corridor spans a 199.7-mile pipeline projects. The corridor spans a 199.7-mile corridor is in Riverside County in California, and the Lake Havasu, Lower Sonoran, Hassayampa, between mileposts (MP) 174.0 and 199.7.



Figure 1. Co

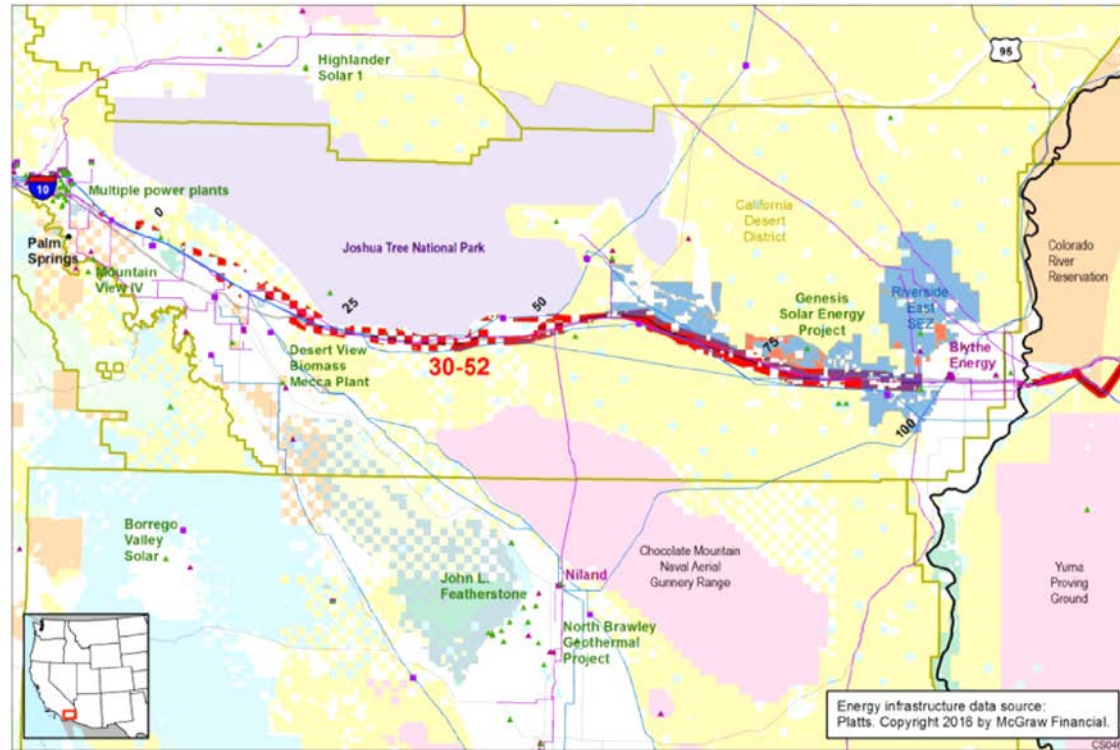
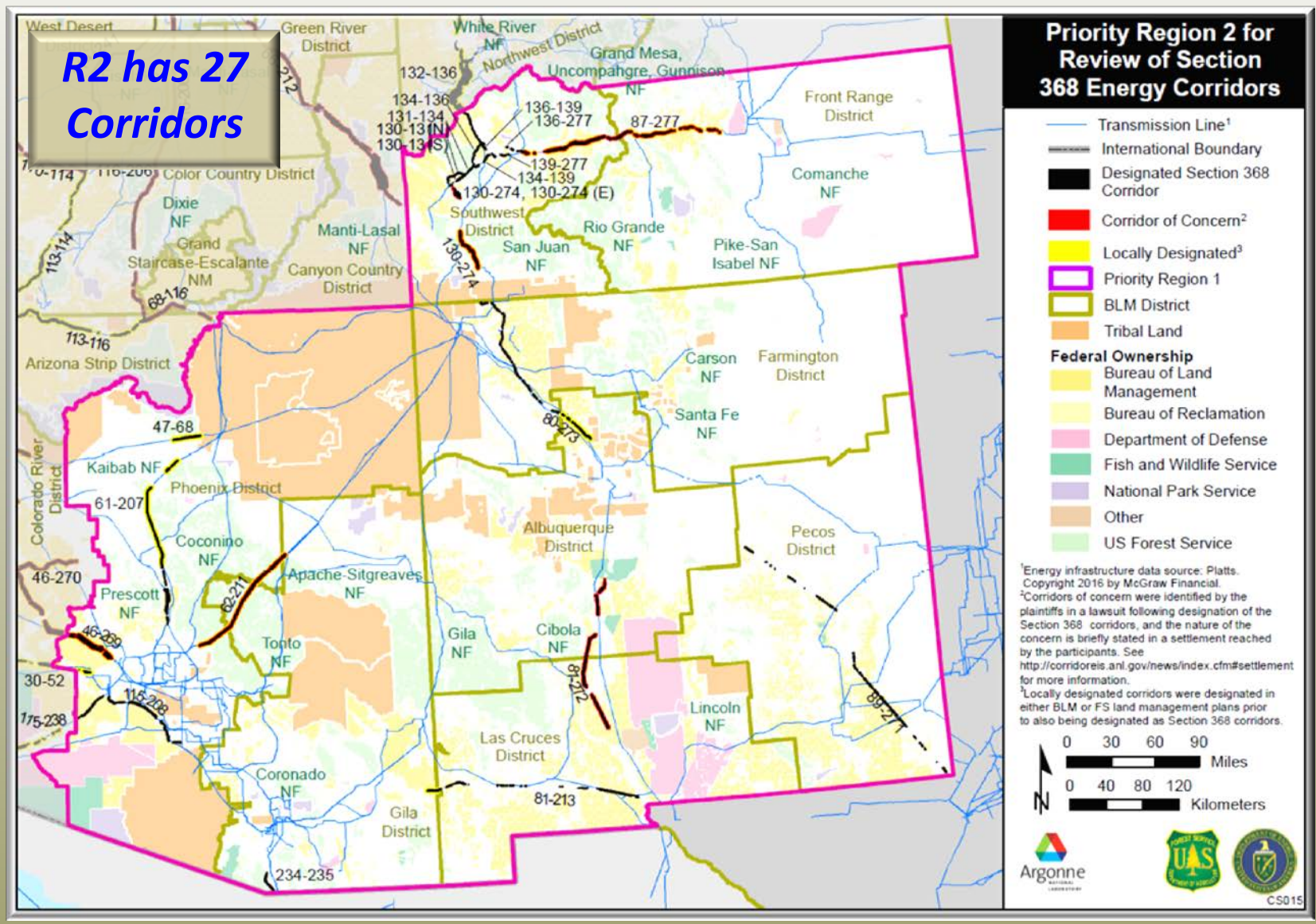


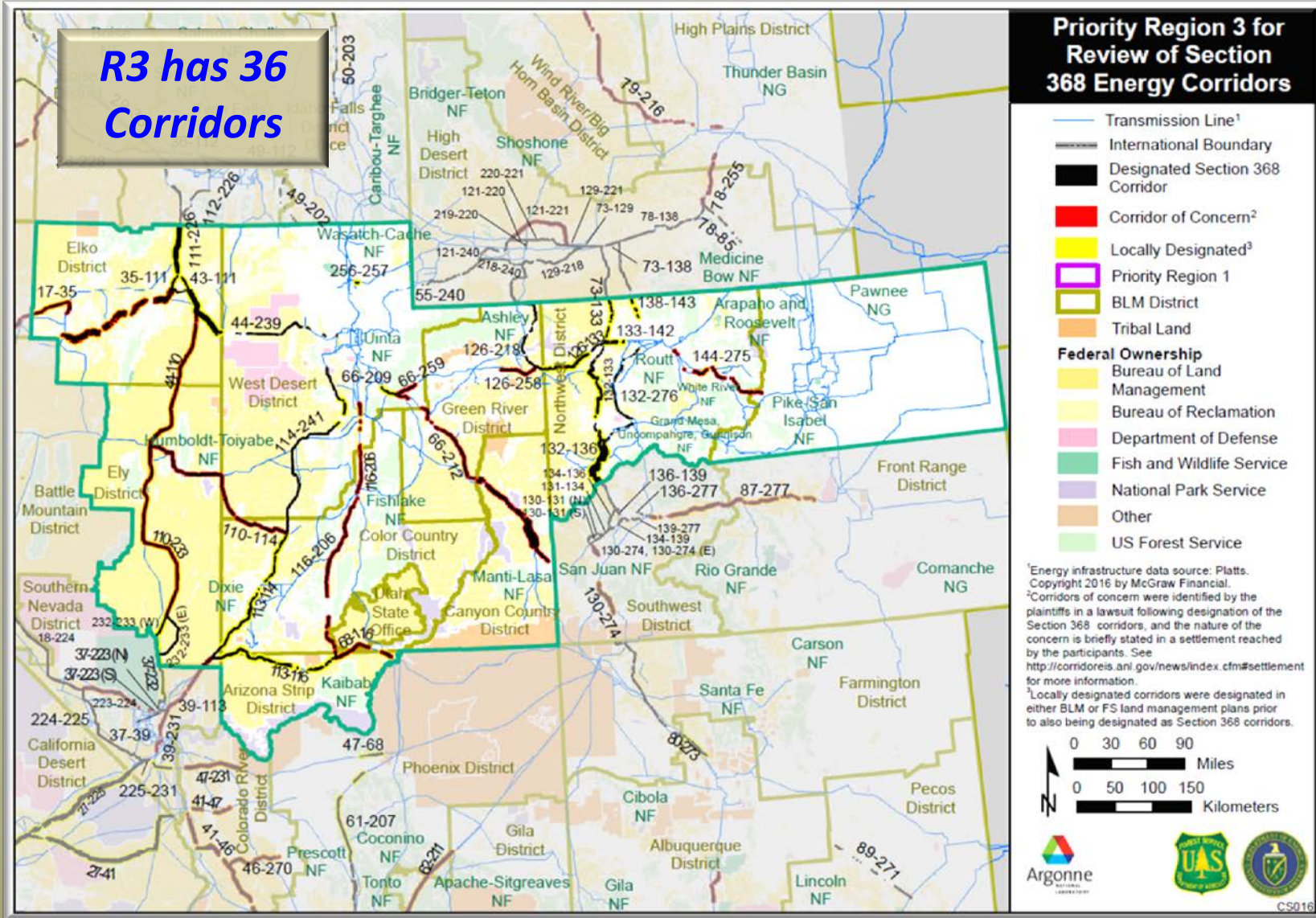
Figure 2. West portion of Corridor 30-52, including existing energy infrastructure



Region 2 – Corridor Abstracts – projected release Dec 2017



Region 3 - Corridor Abstracts - projected release Dec2017



Questions?



Corridor Miles: BLM, FS analysis

Regions 2, 5 and 6 have significant corridor miles on USFS

	Number of Corridors					
	Total #	BLM	USFS	Total Miles	BLM	USFS
Region 1 (CA, NV, AZ)	32	27	5	1,067	1,009	58
Region 2 (AZ, NM, CO)	34	22	12	767	507	260
Region 3 (CO, UT, NV)	51	41	10	1,602	1,498	104
Region 4 (WY, MT)	21	19	2	421	418	3
Region 5 (CA, NV)	25	16	9	949	765	184
Region 6 (MT, ID, OR, WA)	45	30	15	1160	779	381
Totals:	208	155	53	5,966	4,976	990

