


Section 368 Energy Corridor Reviews

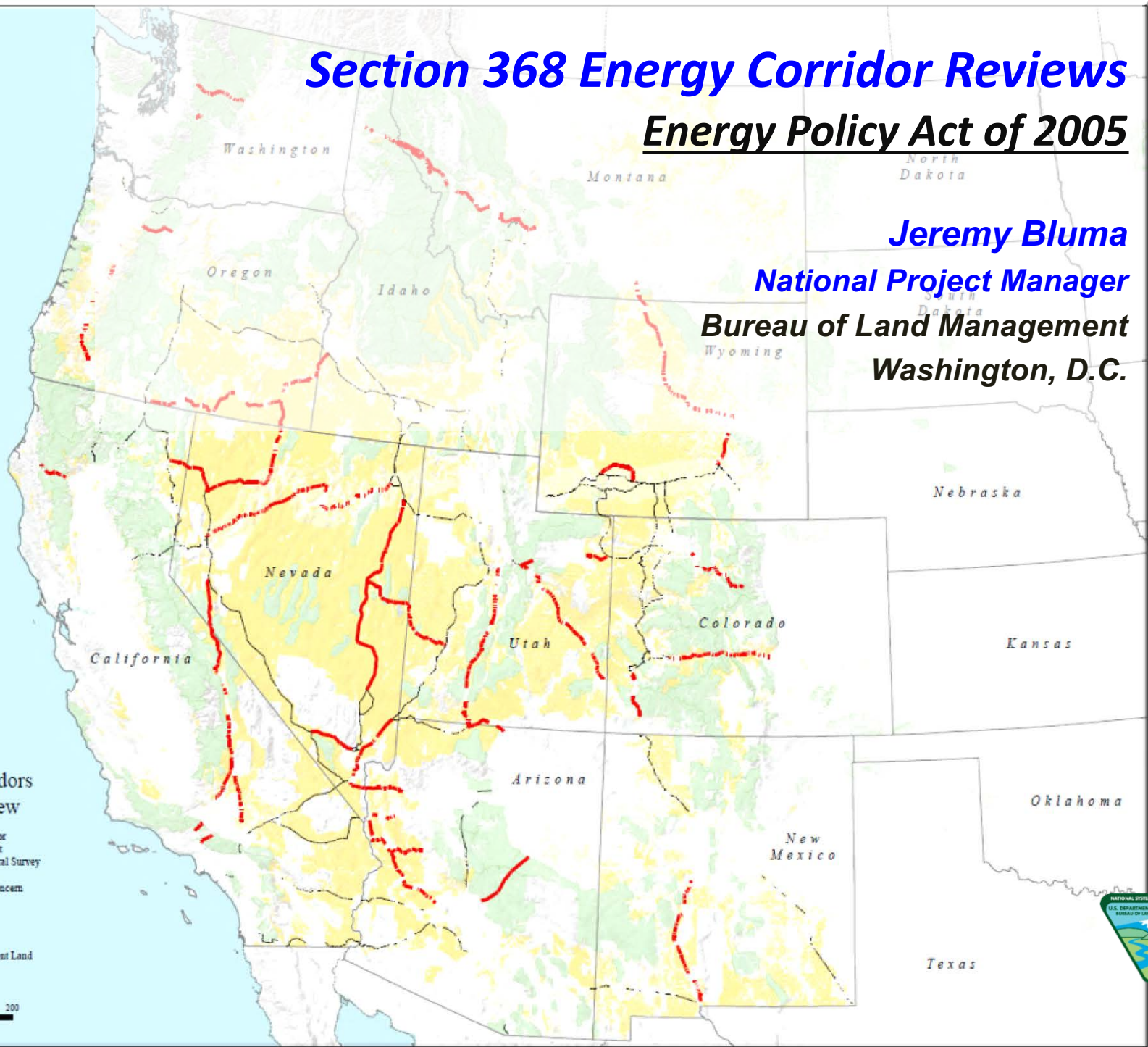
Energy Policy Act of 2005

Jeremy Bluma
National Project Manager
Bureau of Land Management
Washington, D.C.

Section 368 Corridors National Overview

U.S. Department of the Interior
Bureau of Land Management
Division of Lands, Realty and Cadastral Survey

-  Section 368 Corridor of Concern
-  Section 368 Corridor
-  State Boundary
-  Bureau of Land Management Land
-  US Forest Service Land



Background:

Established under the 2005 Energy Policy Act:

- ✓ **Energy Corridors in the 11 contiguous western states**
- ✓ **For BLM: 5,000 Miles / 92 Land Use Plan Amendments**
- ✓ **For USFS: 990 Miles / 38 Land Use Plan Amendments**
- ✓ **Certain Departments and Agencies did not designate corridors**

Section 106 Corridors
National Channels
U.S. Department of the Interior
Bureau of Land Management
Bureau of Reclamation
Bureau of Indian Affairs
Bureau of Ocean Energy Management
Bureau of Land Management
Bureau of Reclamation
Bureau of Indian Affairs
Bureau of Ocean Energy Management
Bureau of Land Management
Bureau of Reclamation
Bureau of Indian Affairs
Bureau of Ocean Energy Management



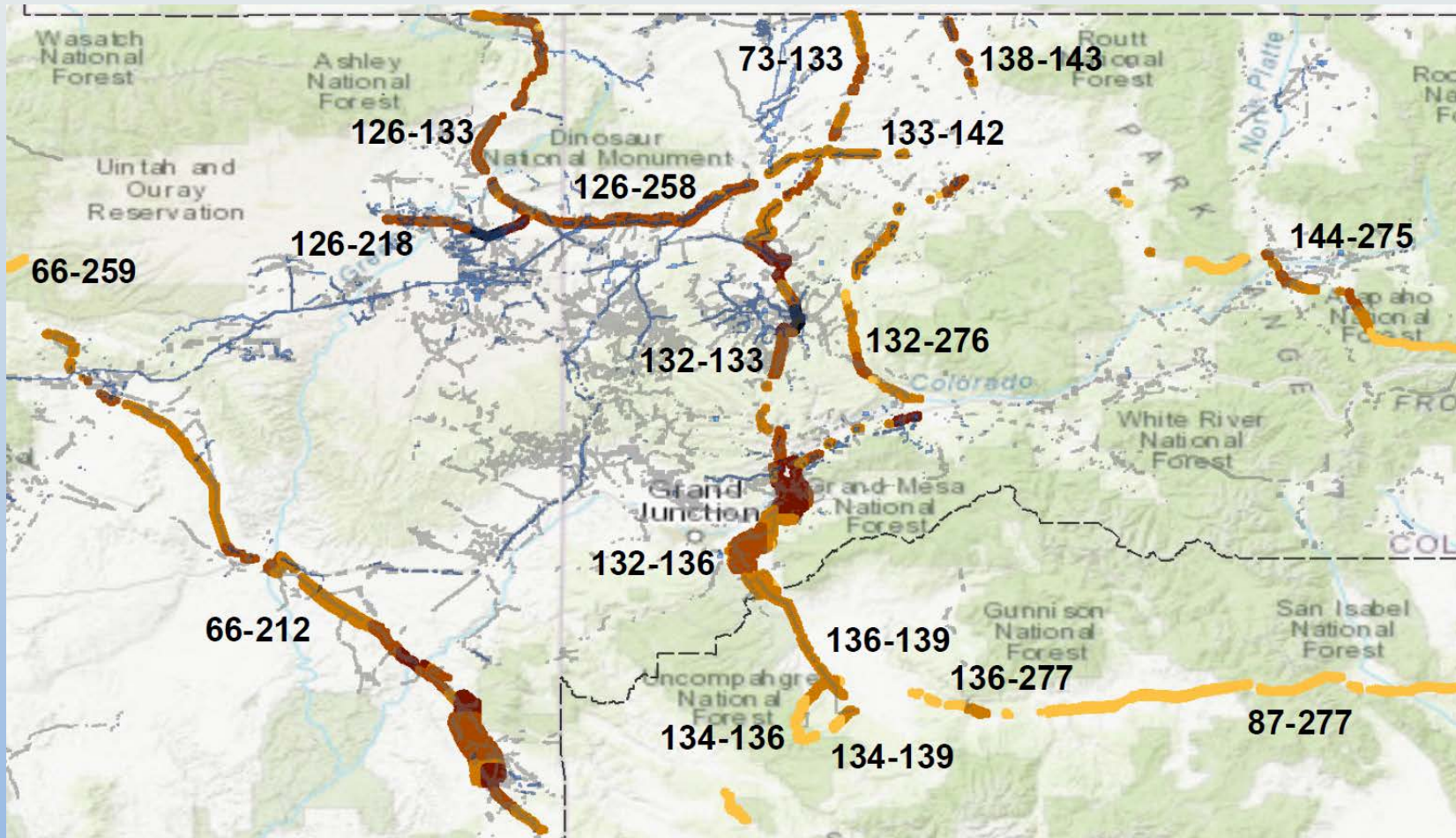
Purpose of presentation:

- ✓ Background on Corridors
- ✓ Status update on Region 1 Review
- ✓ Overview of Regions 2 and 3 Review
- ✓ Information on tools
- ✓ Opportunities for engagement in the reviews

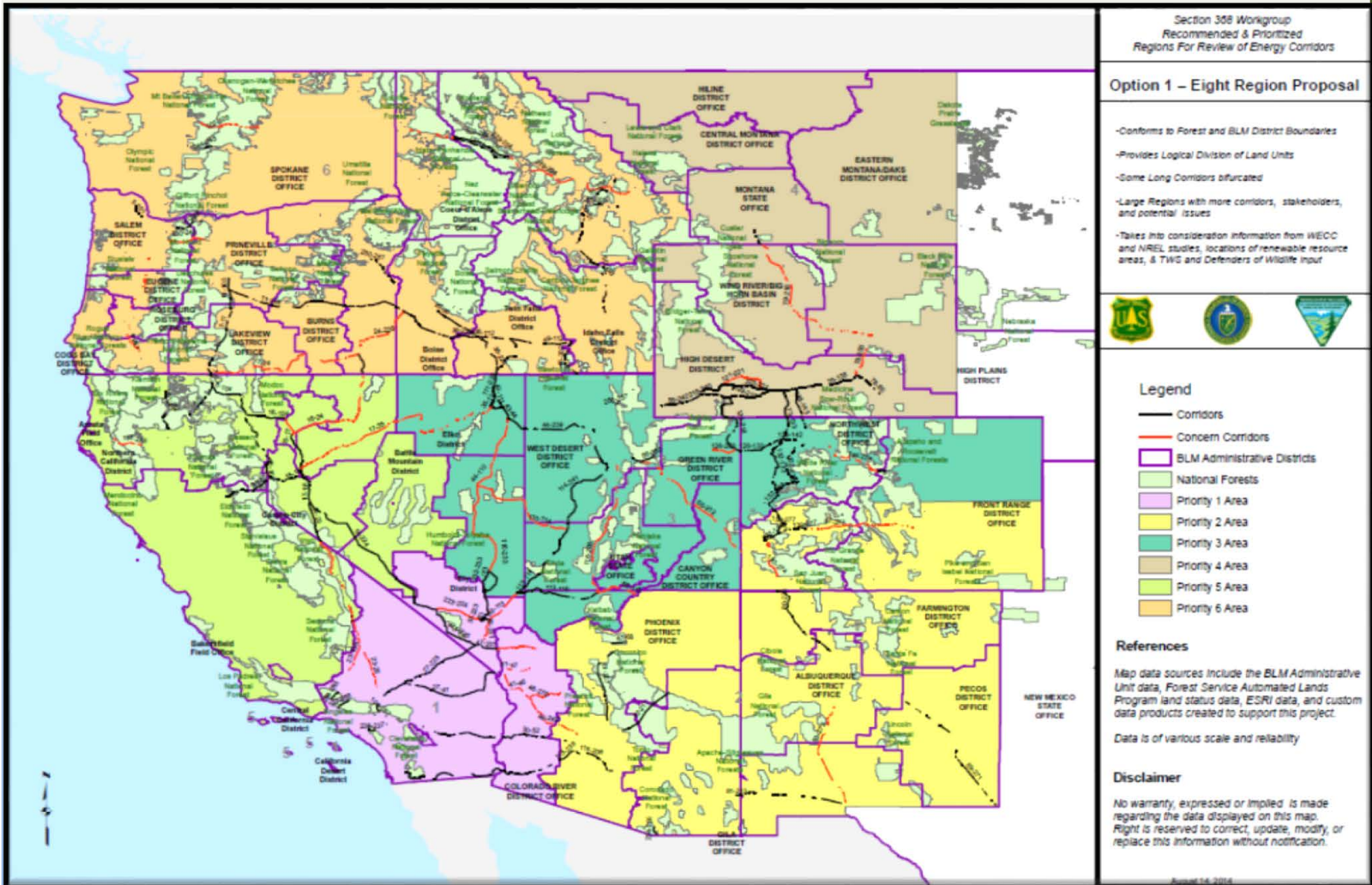


Background on Corridors

Established under the 2005 Energy Policy Act:



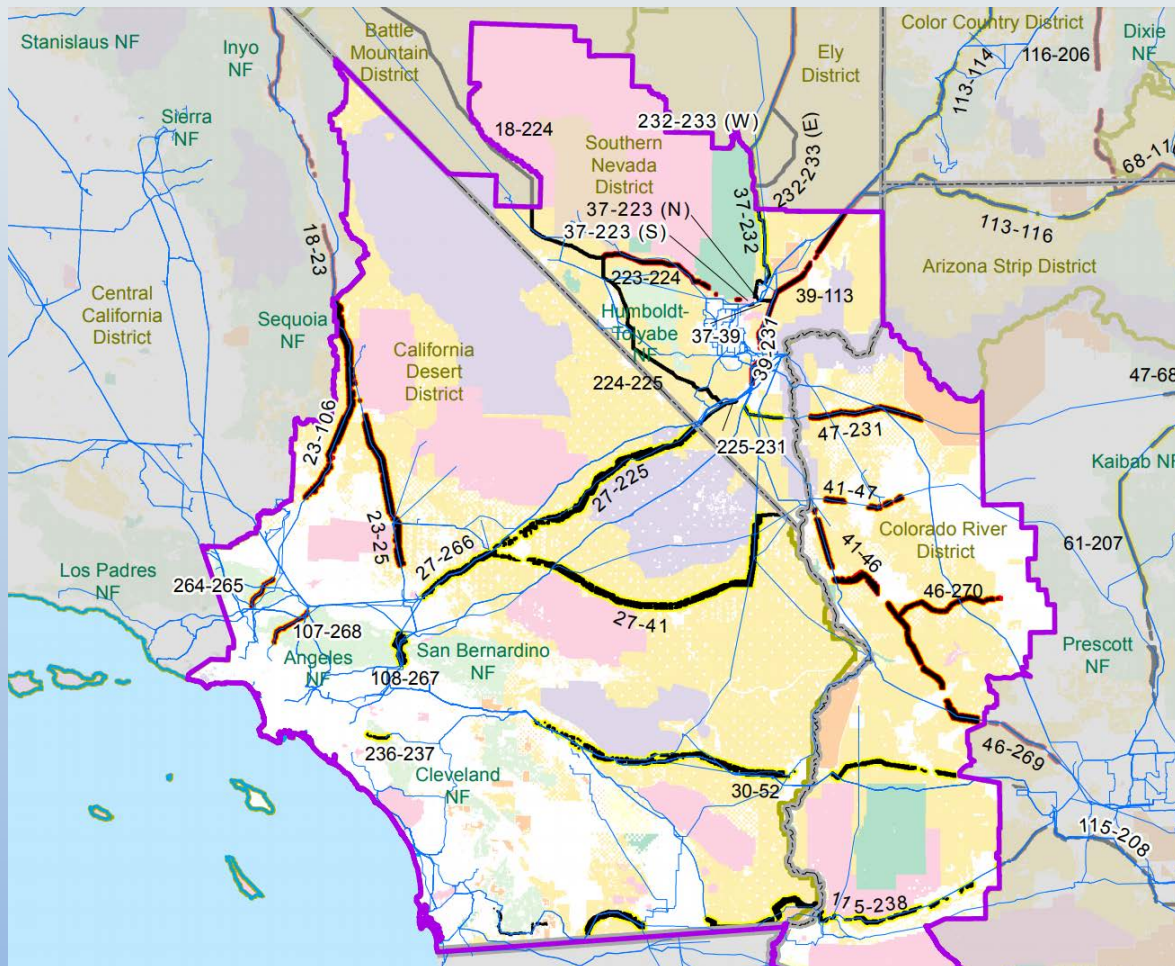
Background on Corridors



Status updates

Region 1:

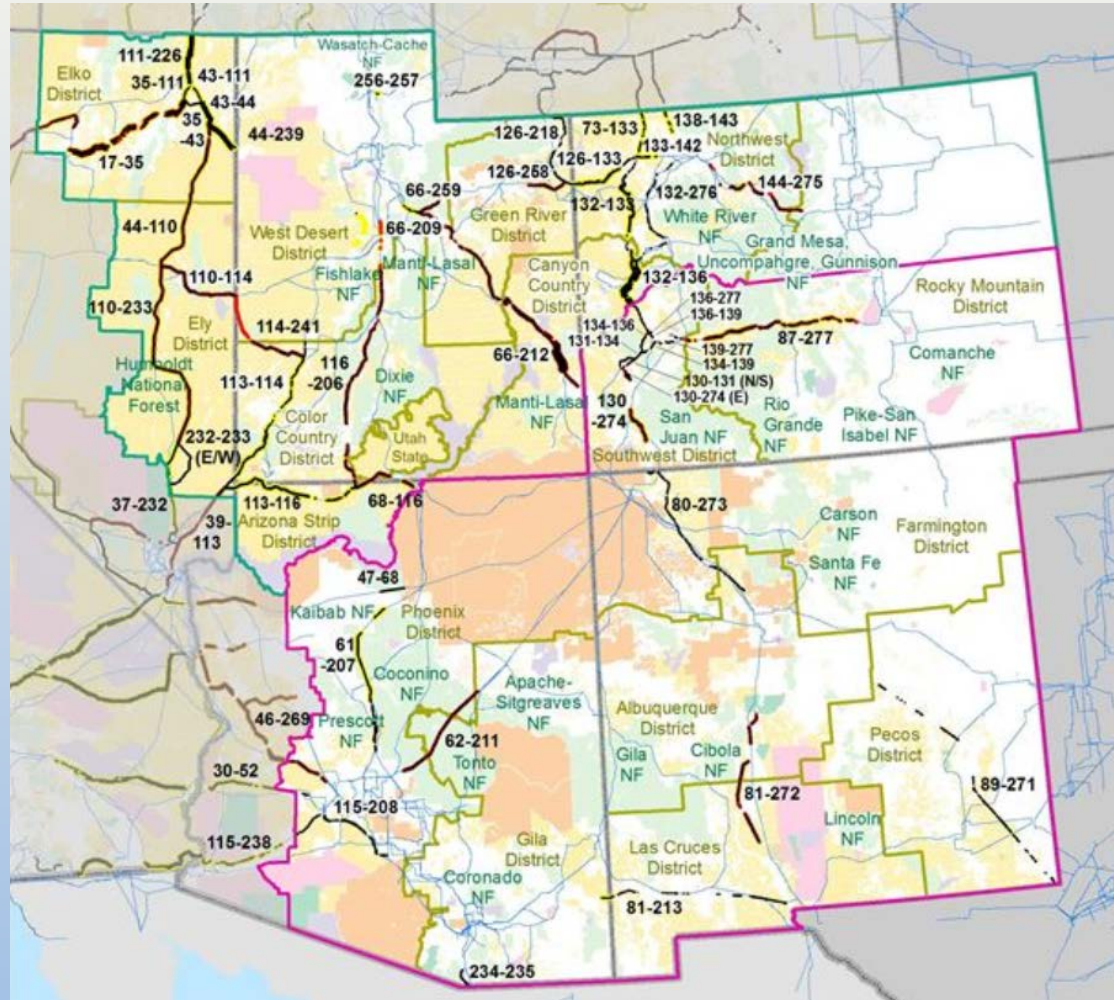
- ✓ Draft Report release – March 2018



Status updates

Regions 2 & 3:

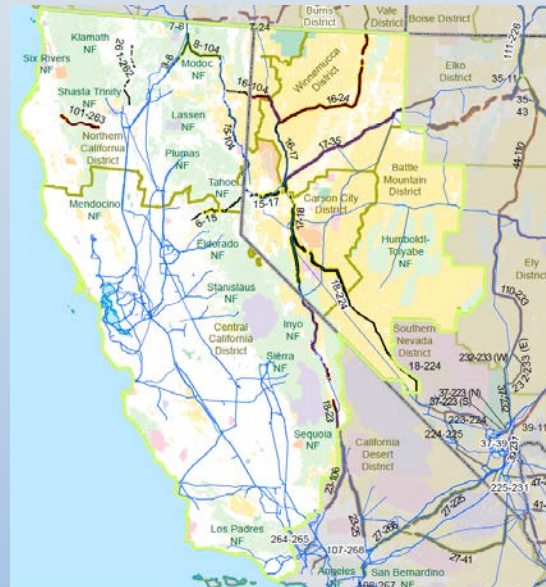
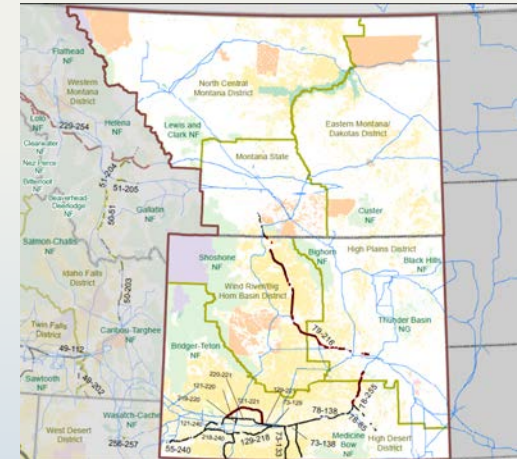
- ✓ Abstract comments
- ✓ Workshops
- ✓ Draft Report



Status updates

Regions 4, 5, 6:

✓ Kick-off January 2019

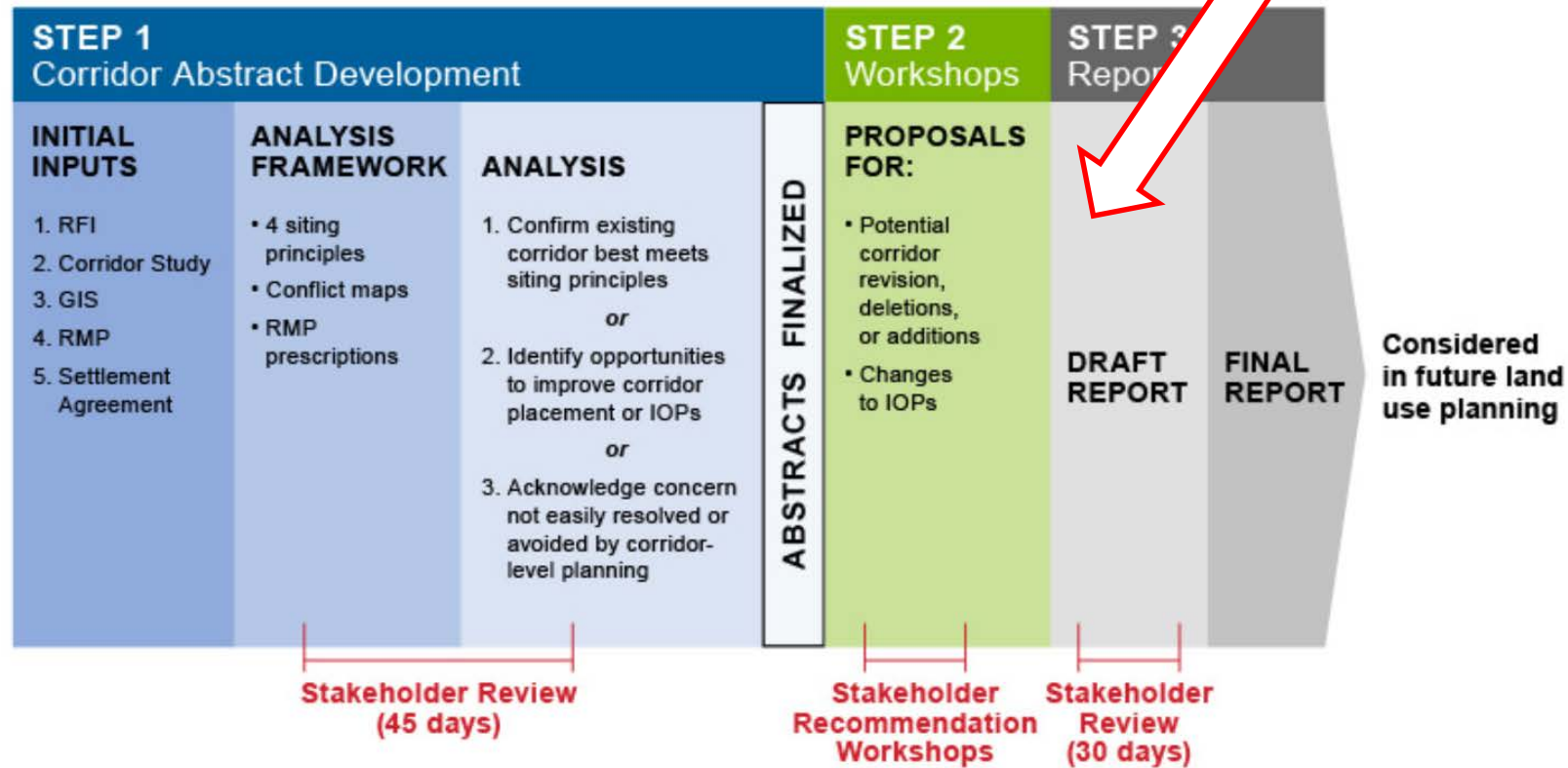


Opportunities for engagement in the reviews

Regions 1, 2 & 3:

Regions 1

Section 368 Energy Corridor Review Process – Regions 2 & 3



Status updates

Region 1:

- ✓ Potential revisions
- ✓ Potential deletions
- ✓ Potential additions

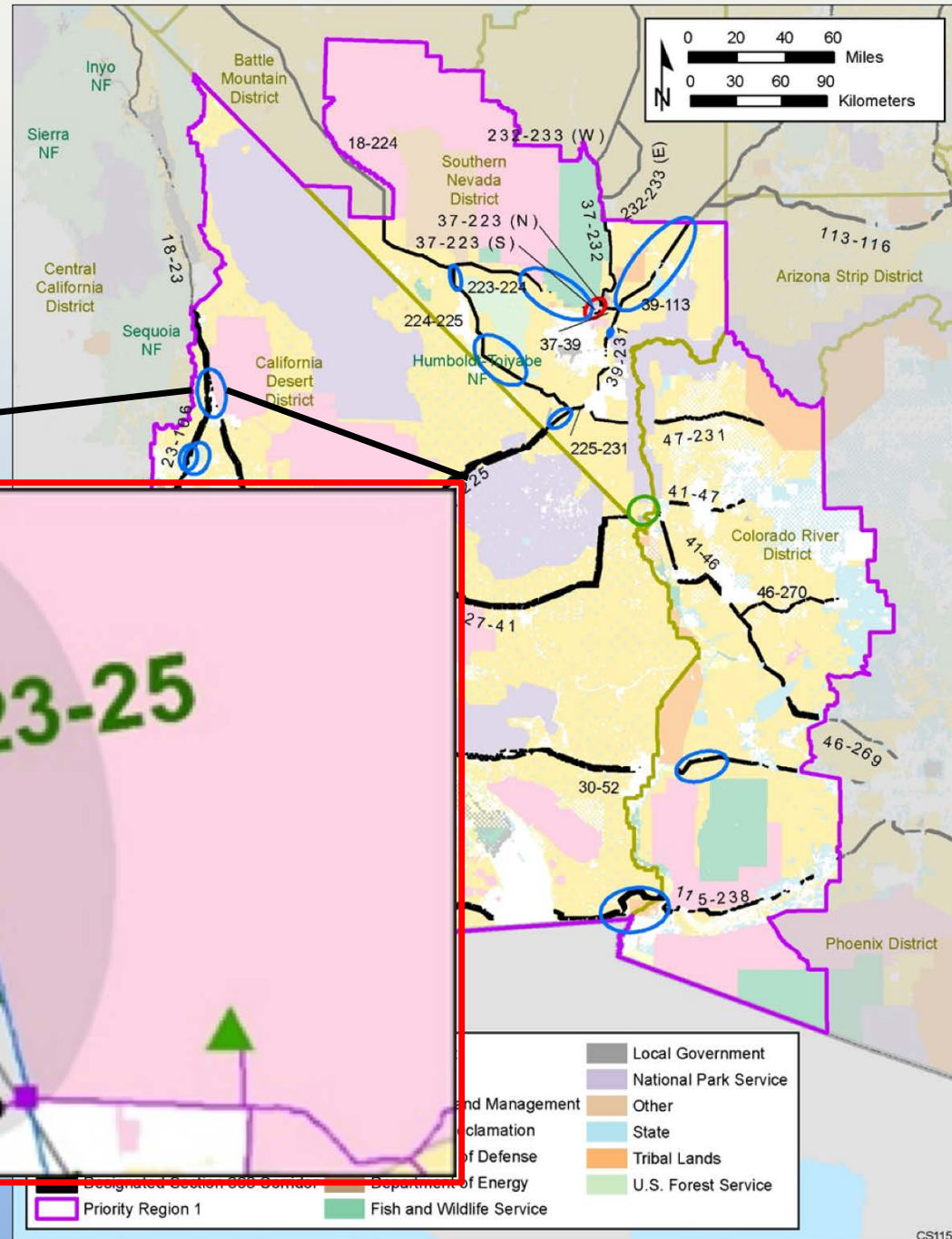


Status updates

Region 1:

Little Lake – Adelanto

✓ Potential revisions



Western Regional Partnership - 2018

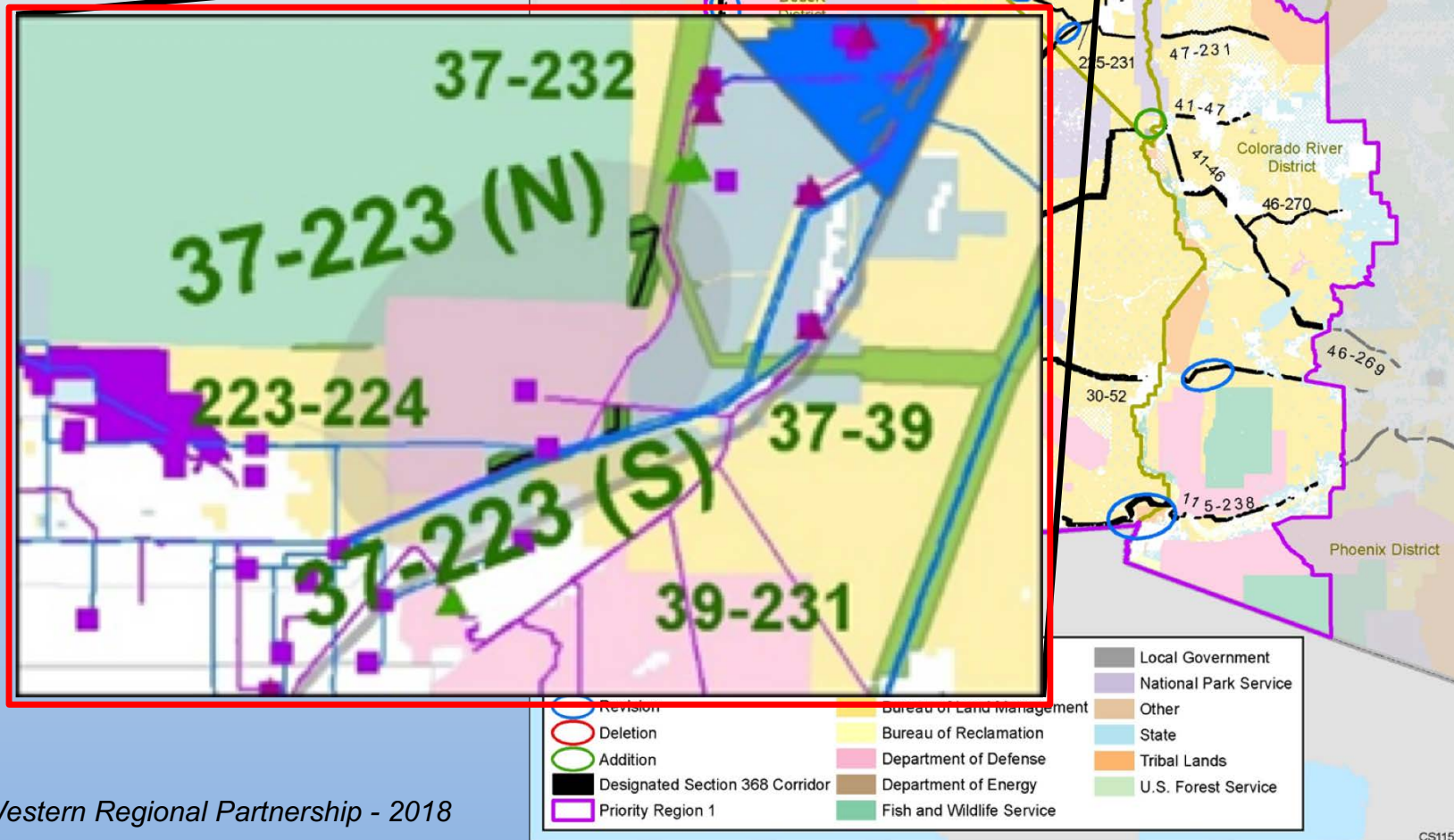
CS115



Status updates

Region 1: West Apex

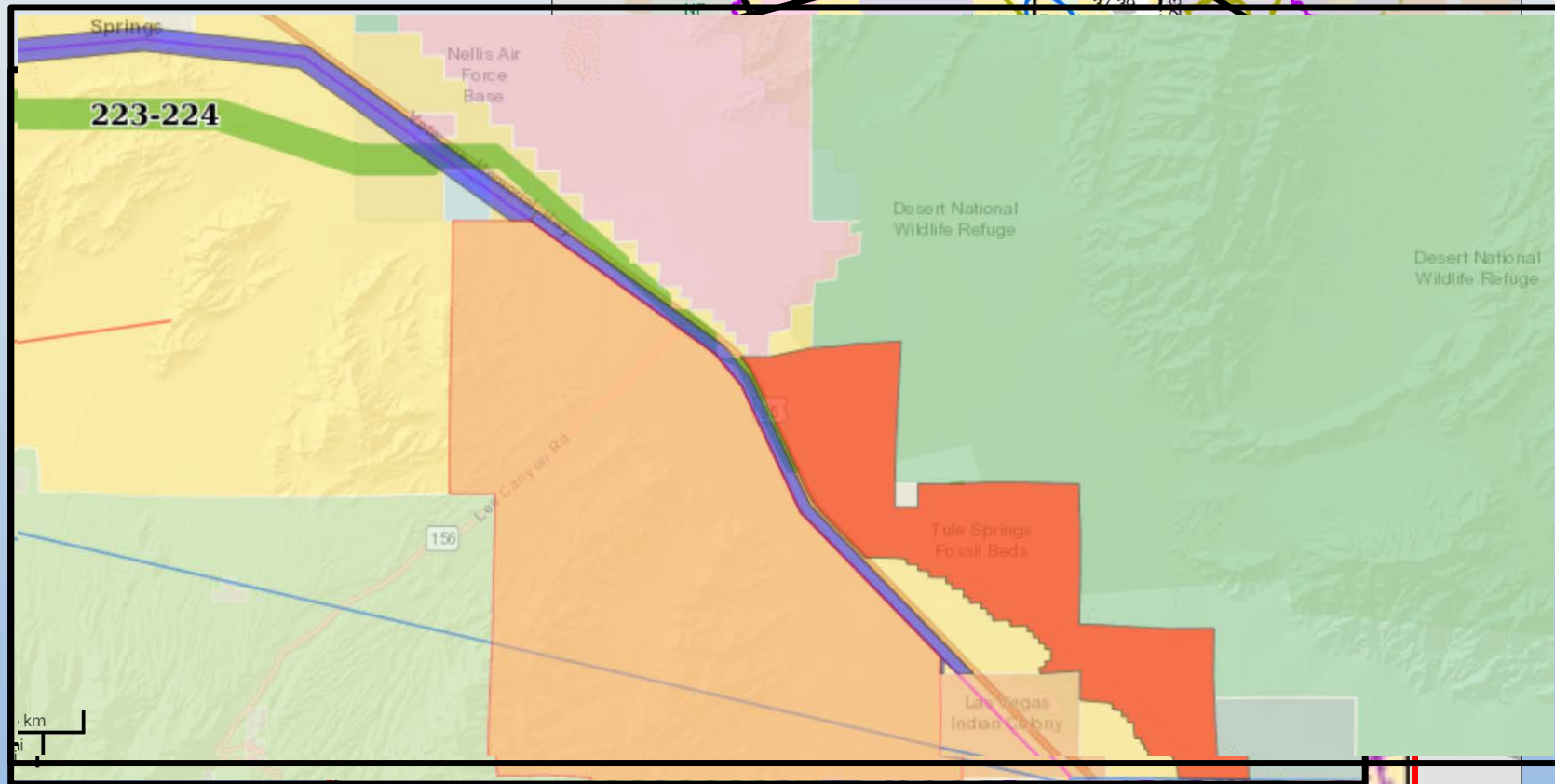
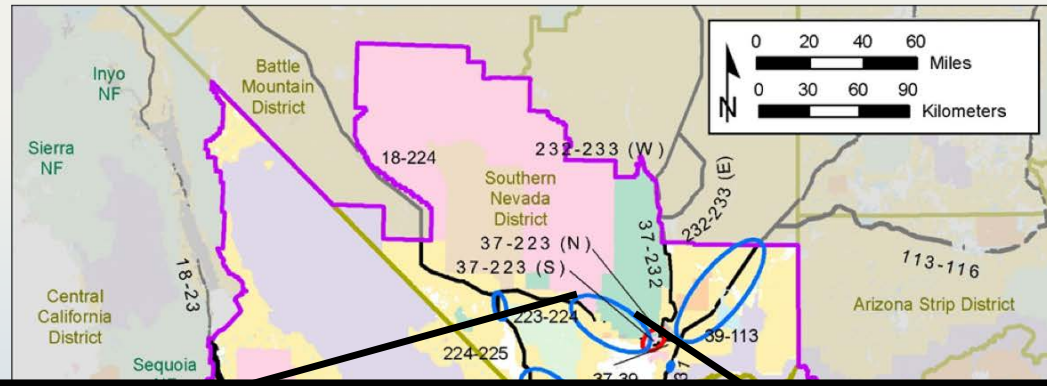
✓ Potential revisions



Status updates

Region 1: Northwest Las Vegas

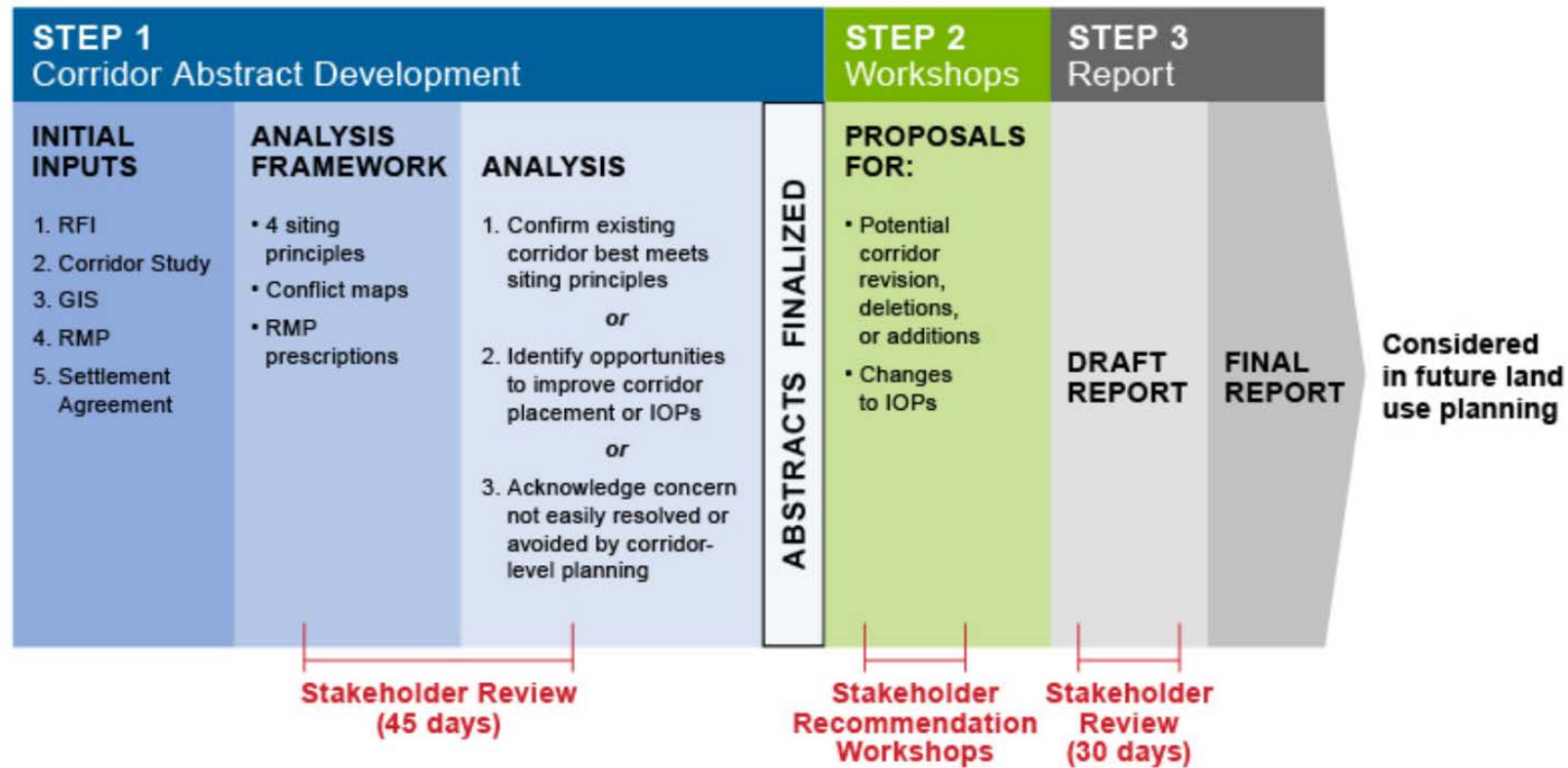
✓ Potential revisions



Status updates

Regions 2 & 3:

Section 368 Energy Corridor Review Process – Regions 2 & 3



234-235



Status updates

Stakeholder Comments:

- ✓ Written submittals-5
- ✓ Email submittals-124
 - NGO-12
 - Local government-10
 - State government-7
 - Federal government-7
 - Individuals-4
 - Industry-2
 - Tribe-1



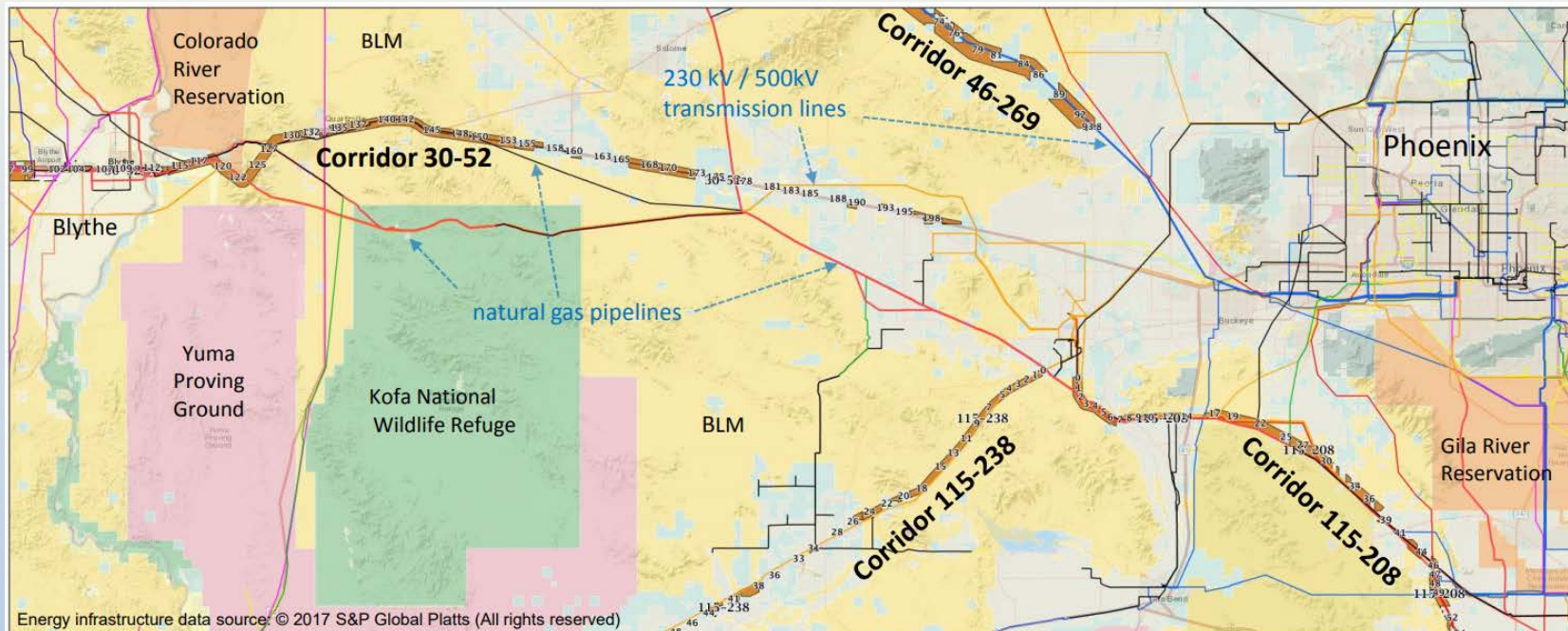
Status updates

Stakeholder Comments:

- ✓ Various concerns ranging between resource protection to protection of corridor use
- ✓ The review effort is intended to analyze the data according to the Settlement Agreement Siting Principles



Information on Tools



Web-based mapping tool:

- Facilitates use and management of the energy corridors
- Provides data on the energy corridors and existing energy infrastructure
- Provides data on natural and cultural resources
- Facilitates easy online comment submittal and access to corridor information

Register at: <https://bogi.evs.anl.gov/section368/portal>

Opportunities for engagement in the reviews

Regions 4, 5 & 6: Beginning 2019



QUESTIONS ?

Jeremy Bluma
National Project Manager
Bureau of Land Management
Washington, D.C.

Section 368 Corridors National Overview

U.S. Department of the Interior
Bureau of Land Management
Division of Lands, Realty and Cadastral Survey

- Section 368 Corridor of Concern
- Section 368 Corridor
- State Boundary
- Bureau of Land Management Land
- US Forest Service Land

