



National Defense Strategy



National Defense Strategy

Panel Moderator: **Ms. Allison Sands**, Deputy Assistant Secretary of Defense for Infrastructure

Speakers:

- **Mr. Fred Drummond**
Deputy Assistant Secretary of Defense Force Education and Training
- **Rear Admiral Lindsey**
Commander, Navy Region Southwest
- **Colonel Jeff Holt**
Deputy Commander, Marine Corps Installations West-MCB Camp Pendleton
- **Mr. Jeff Jennings**
Deputy to the Commanding General, U.S. Army Intelligence Center of Excellence, Fort Huachuca
- **Dr. David Smith**
412 TW Installation Support Director, Edwards Air Force Base



Navy Region Southwest

WHERE THE PACIFIC FLEET BEGINS



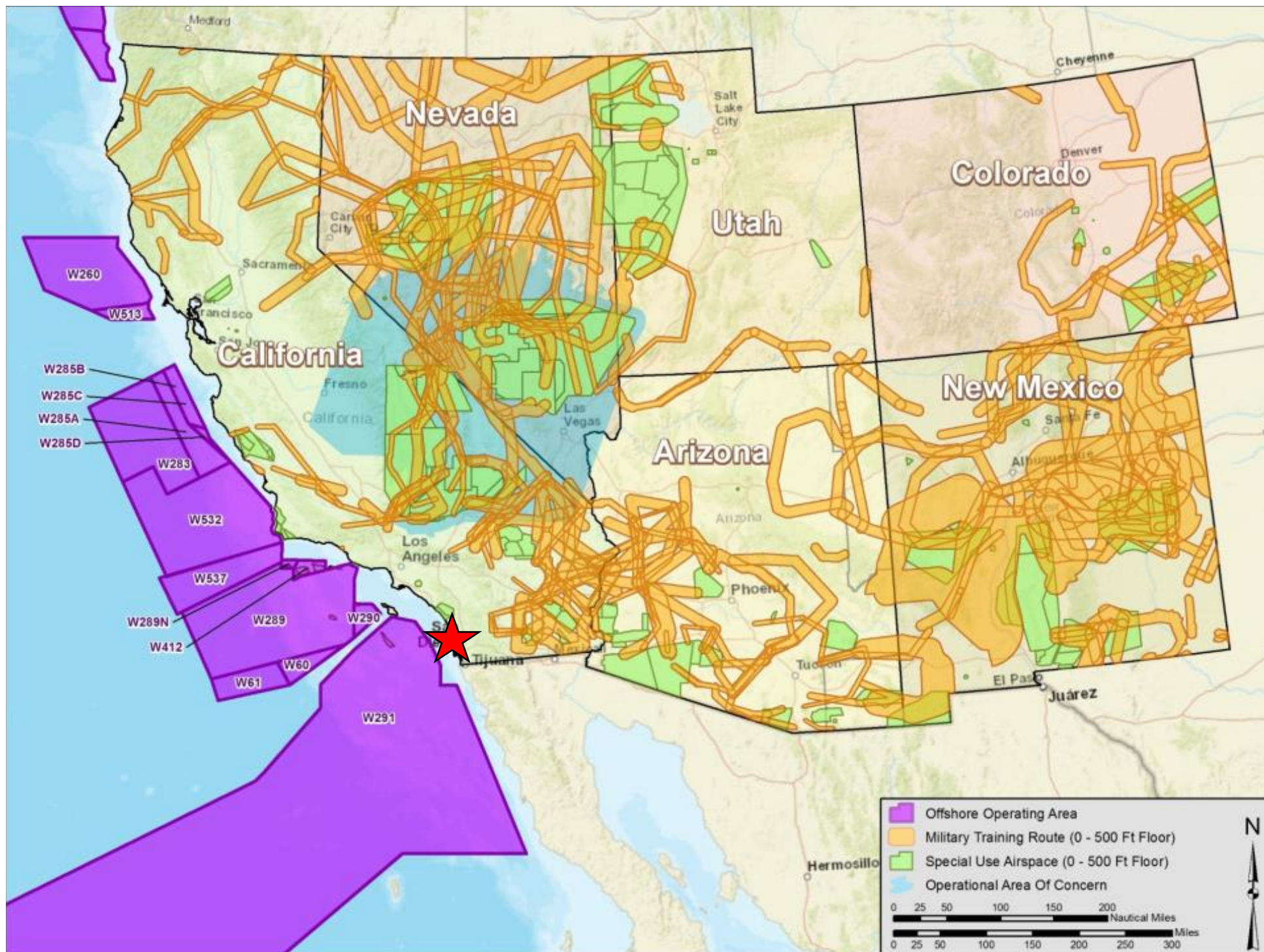
***Rear Admiral
Yancy Lindsey***



AMERICA'S
NAVY
A GLOBAL FORCE FOR GOOD.™



CNIC
★ FLEET ★ FIGHTER ★ FAMILY ★









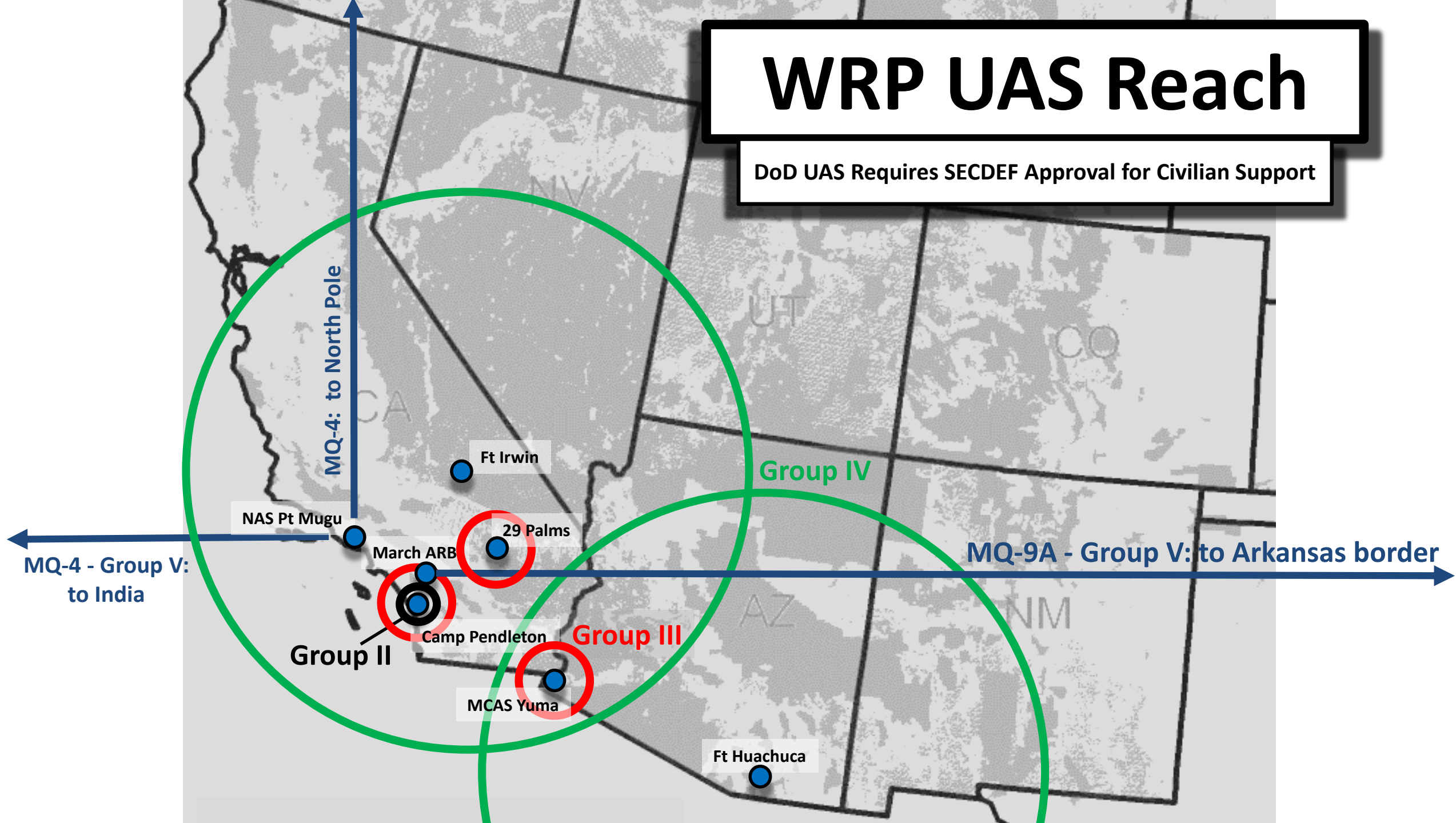


Off-Installation Transit Axis & Corridor Analysis (OITACA) Study



WRP UAS Reach

DoD UAS Requires SECDEF Approval for Civilian Support



UAS Layered Network





National Defense Strategy: Army Installation and Range Challenges to Meet the New Threat

Jeffrey Jennings

**Deputy to the Commanding
General, USAICoE**



Fort Irwin, CA

- Established 1981
- Fort Irwin = 1,200 sq. miles
- Economic Impact: \$1 bn/yr

Dugway Proving Ground, UT

- Established 1942
- Dugway PG = 1,251 sq. miles
- Economic Impact: \$236 M/yr

Fort Carson, CO

- Established 1942 & Pinon Canyon Maneuver Site (PCMS) 1983
- Fort Carson = 214 sq. miles
- PCMS = 368 sq. miles
- Economic Impact: \$2.3 bn/yr

Yuma Proving Ground, AZ

- Established 1952
- Yuma PG = 1,292 sq. miles
- Special Use Airspace = 1,861 sq. nautical miles
- Economic Impact: \$450 M/yr

Fort Huachuca, AZ

- Established 1881
- Fort Huachuca = 157 sq. miles
- Special Use Airspace: 727 sq. nautical miles
- Buffalo Soldier Electronic Test Range = 2,500 sq. miles
- Economic Impact: \$2.4 bn/yr

White Sands Missile Range, NM

- Established 1945
- White Sands = 3,437 sq. miles
- Special Use Airspace: 5,754 sq. nautical miles
- Economic Impact: \$1.7 bn/yr

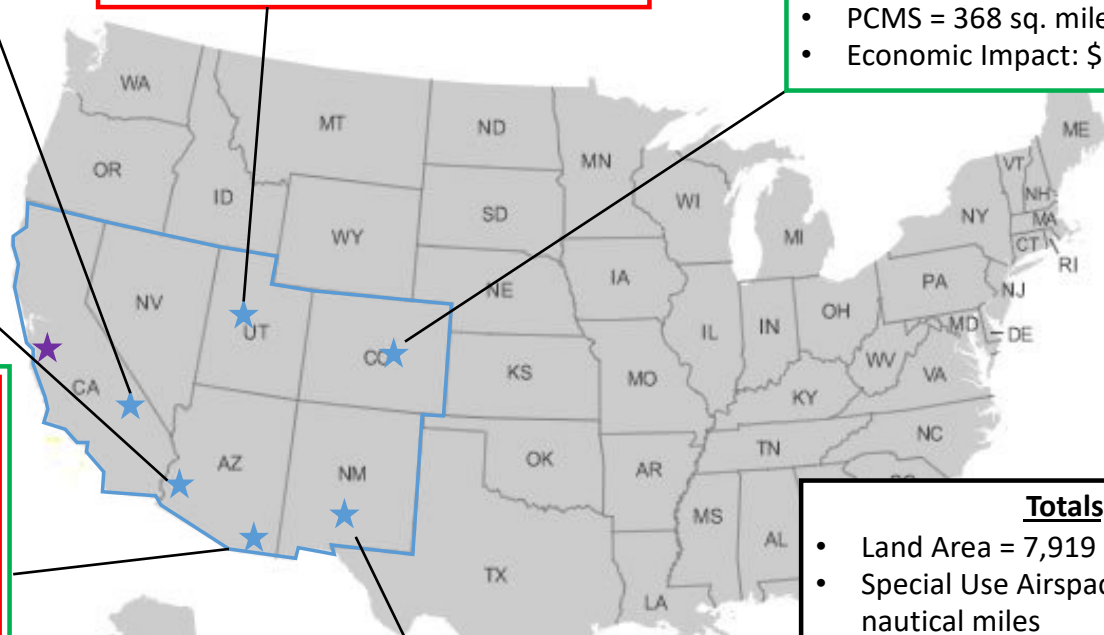
Totals

- Land Area = 7,919 sq. miles
- Special Use Airspace = 8,342 sq. nautical miles
- Economic Impact: \$8.08 bn/yr

★ = Defense Language Institute
Monterey, CA

□ = Testing Ranges

□ = Training Bases



Dugway Proving Ground, UT

- Mission: Chemical, biological, radiological, and explosives (CBRE) testing
- **Challenges: Survive in a chemically/biologically contaminated environment**

Fort Carson, CO

- Mission: Home of the 4th Infantry Division, 10th Special Forces Group (Airborne)
- **Challenges: Deployment/Readiness**

Fort Irwin, CA

- Mission: The National Training Center preparing Brigade Combat Teams for Combat
- **Challenges: Dense Urban Warfare and Long Range Precision fires**

Yuma Proving Ground, AZ

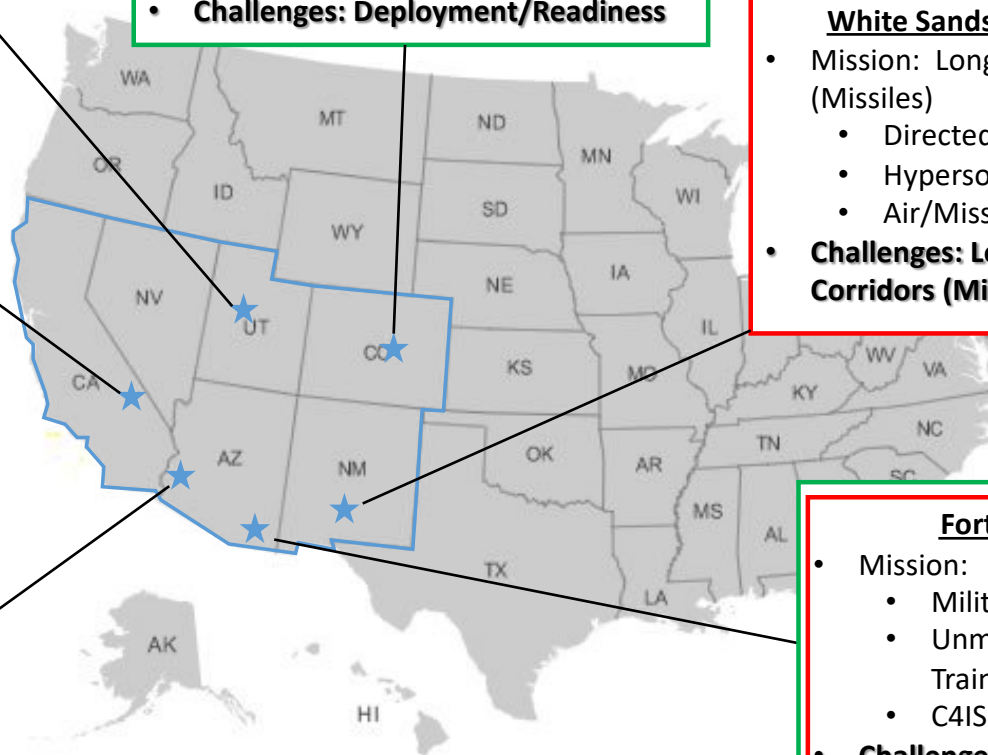
- Mission:
 - Indirect Fire Systems (Artillery)
 - Air Delivery Systems
 - Automotive/Ground Combat Systems
 - Extreme Natural Environment
- **Challenges: Long Range Precision Fires**

White Sands Missile Range, NM

- Mission: Long Range Precision Fire (Missiles)
 - Directed Energy
 - Hypersonic Long Range Systems
 - Air/Missile Defense
- **Challenges: Long Range Test Corridors (Missiles)**

Fort Huachuca, AZ

- Mission:
 - Military Intelligence Training
 - Unmanned Aircraft System Training
 - C4ISR/ISR/EW Systems
- **Challenges: Increased long range detection systems, survivability and electronic warfare**





Training and Testing Drivers



- National Defense Strategy:
 - Ability to see and engage the enemy at greater distances
 - Ability to effectively engage the enemy kinetically and non-kinetically
 - Ability to survive against a pacing peer with a complex kinetic and non-kinetic capability

Cold War Era Installations and Ranges ≠ 2025 Military Challenges





412th Test Wing

Edwards Air Force Base, CA

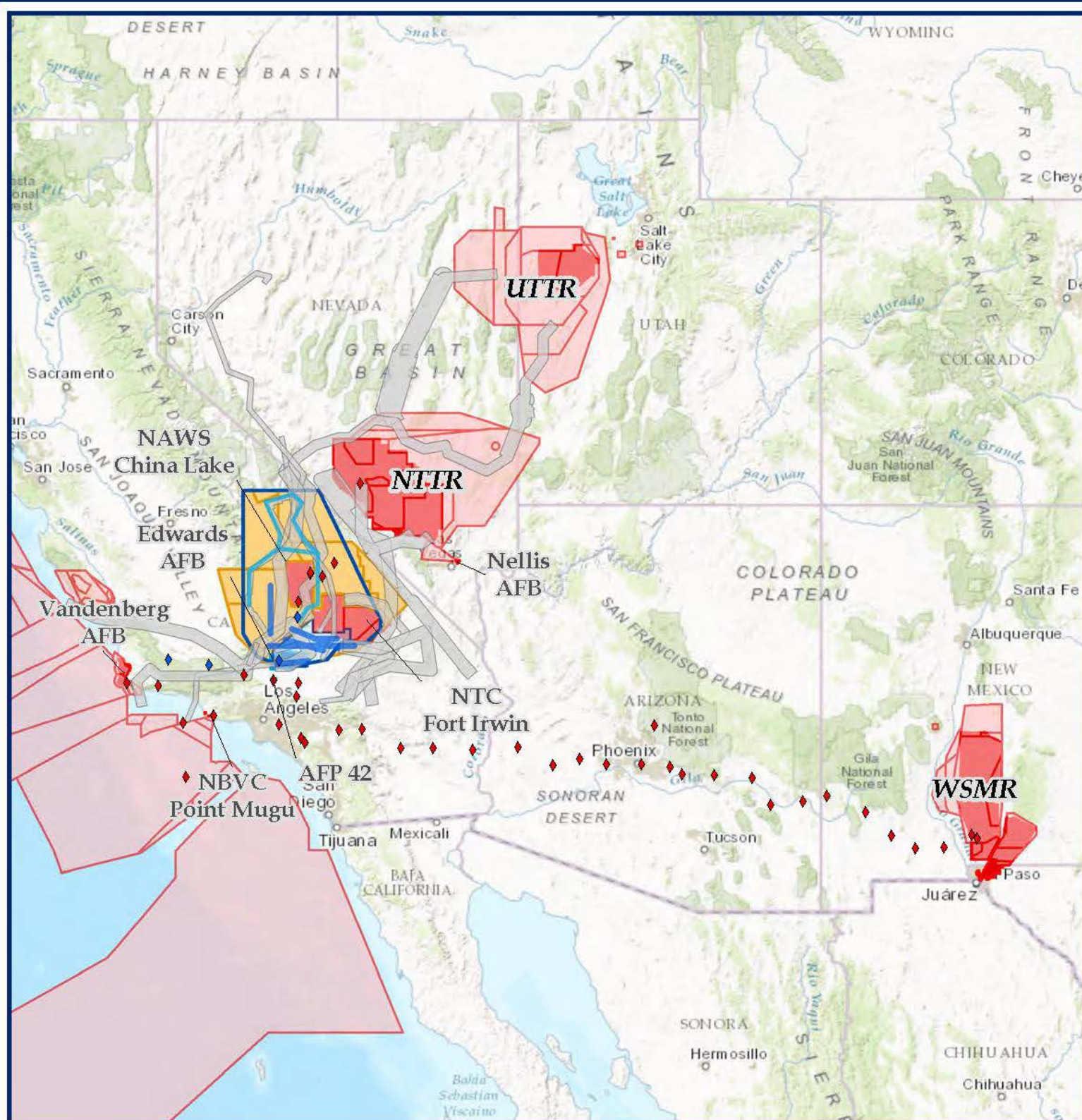


Breaking Barriers Since 1947



Dr. David Smith
Installation Support Director



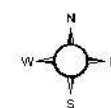


Installation Complex

-  Microwave Relay Station / Communication Annex
-  Terrain Following Route
-  Low Level Route
-  Military Training Route
-  R-2508 Complex
-  R-2515 Complex
-  Edwards AFB & AFP 42
-  Jointly Managed SUA

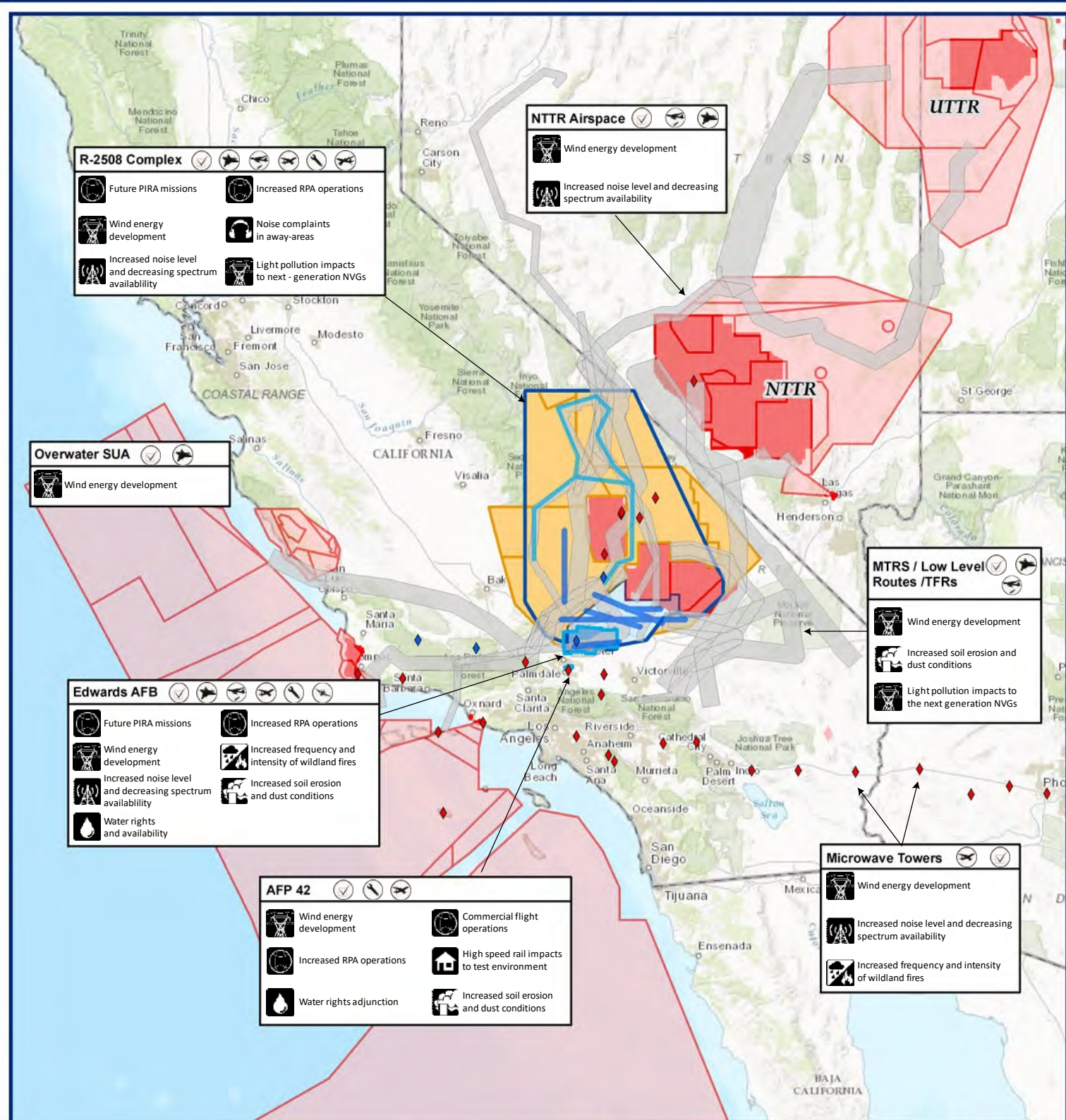
Mission Footprint

-  Microwave Relay Station / Communication Annex
-  Special Use Airspace
-  Military Installation



0 80 160
Miles

June 2017



- Edwards Systems Test & Evaluation
- Global Precision Attack
- Global Integration, Surveillance and Reconnaissance
- Rapid Global Mobility

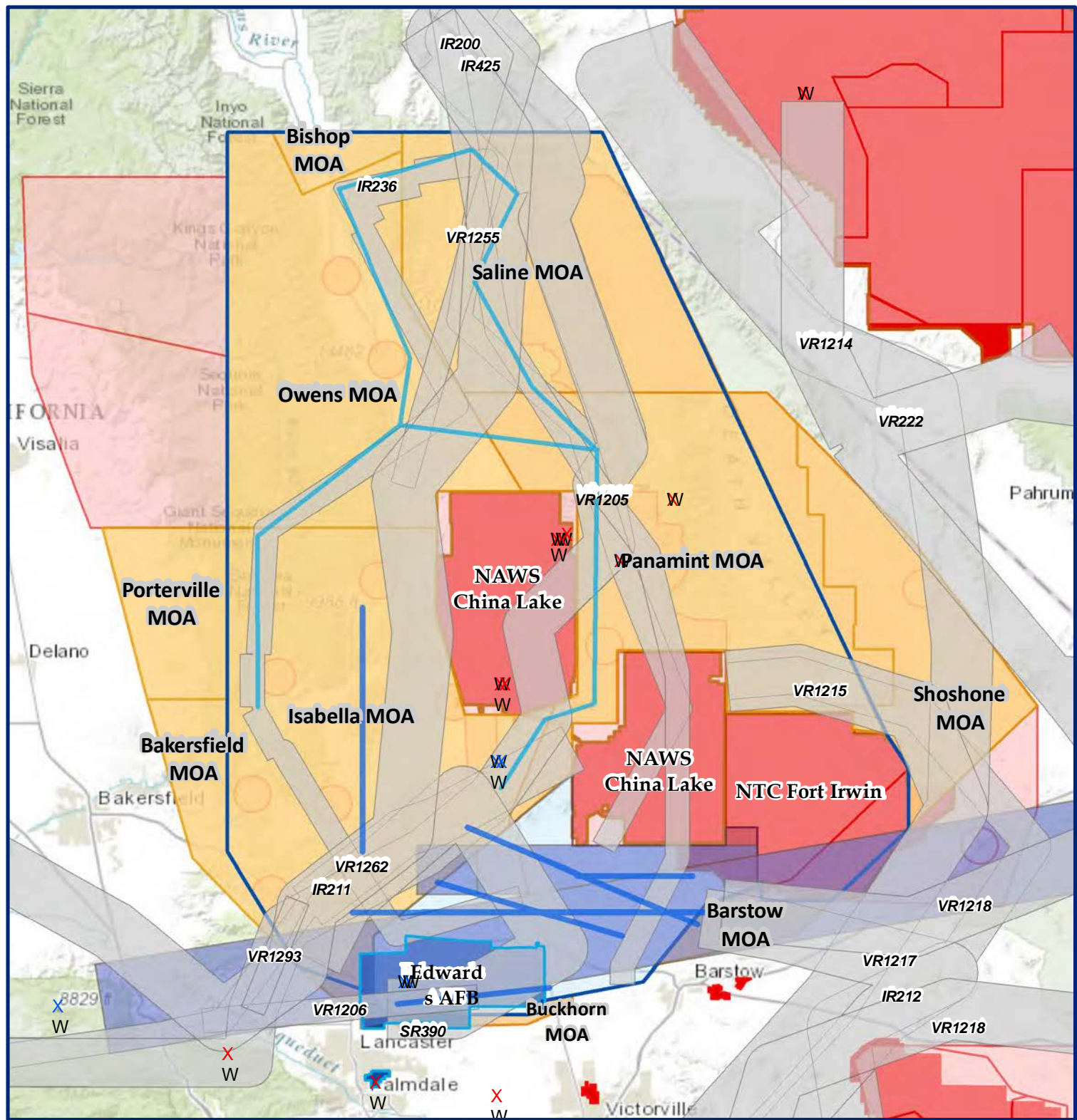
- Agile Combat Support
- Air Superiority
- Air Refueling

- Edwards AFB & AFP 42
- R-2508 Complex
- R-2515
- Jointly Managed SUA
- Special Use Airspace
- Mission Footprint



0 50 100
Miles

June 2017



Installation Complex

- X Microwave Relay Station / Communication Annex
- W Terrain Following Route
- ~ Low Level Route

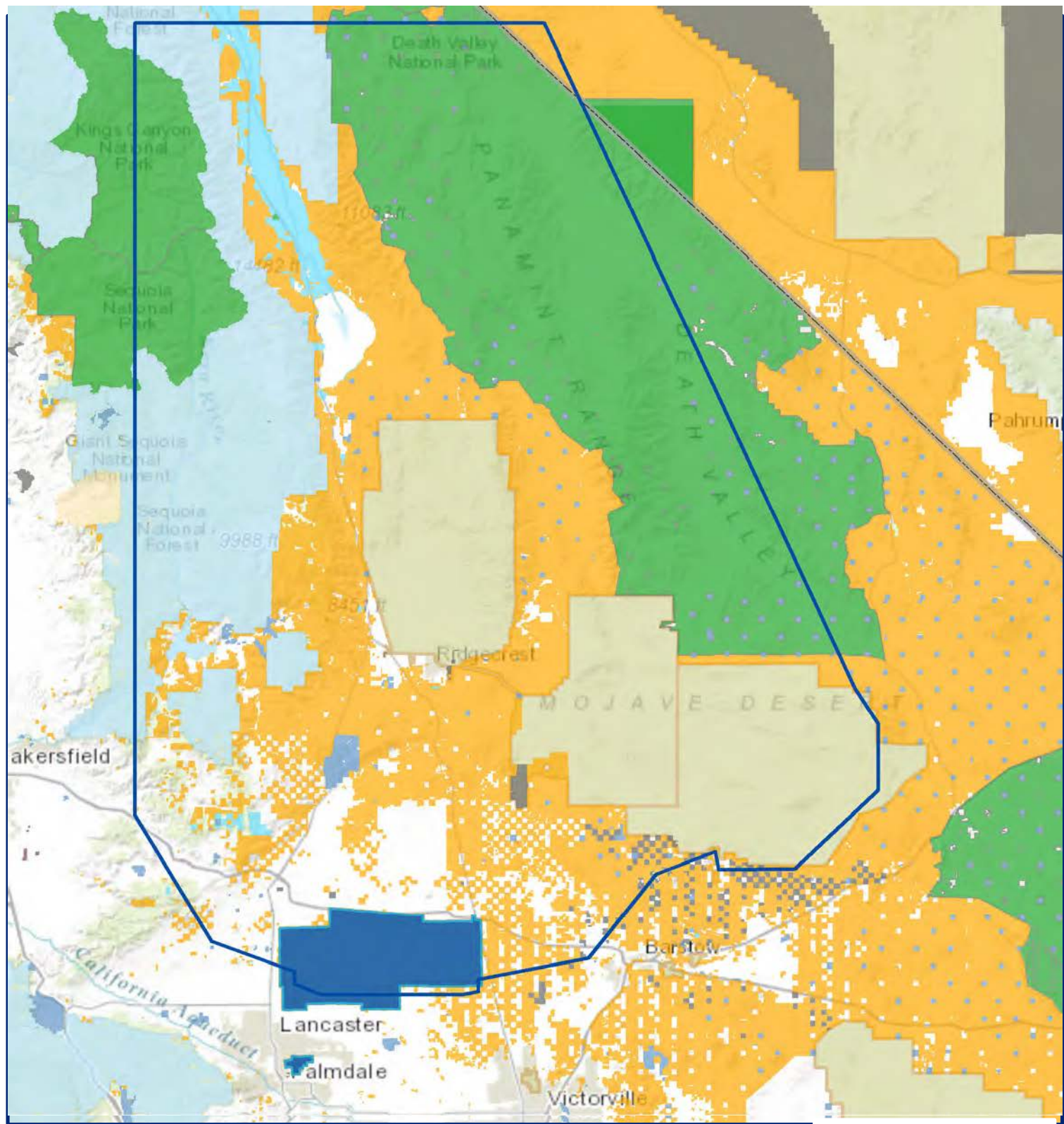
- Special Use Corridor
- Military Training Route
- Edwards AFB & AFP 42
- Jointly Managed SUA

Mission Footprint


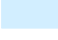







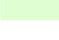


- X Microwave Relay Station / Communication Annex
- Special Use Airspace
- Military Installation

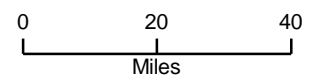


June 2017

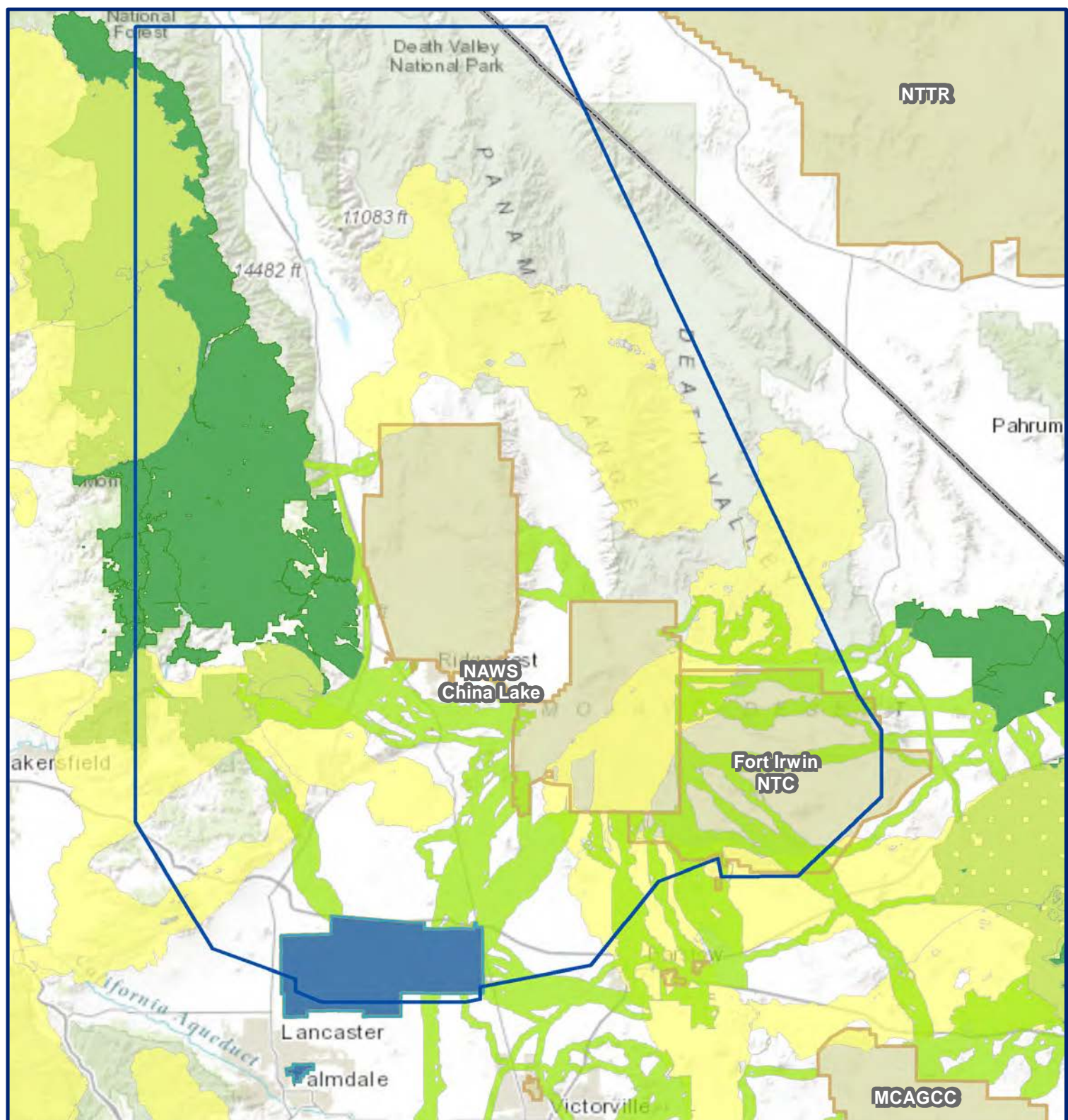


Land Ownership

	Bureau of Land Management		U.S. Forest Service		Edwards AFB & AFP 42
	National Park Service		Bureau of Indian Affairs		R-2508 Complex
	Department of Defense		State Lands		Military Installations
	U.S. Fish & Wildlife Service		Local Government		
			Other Federal Agencies		



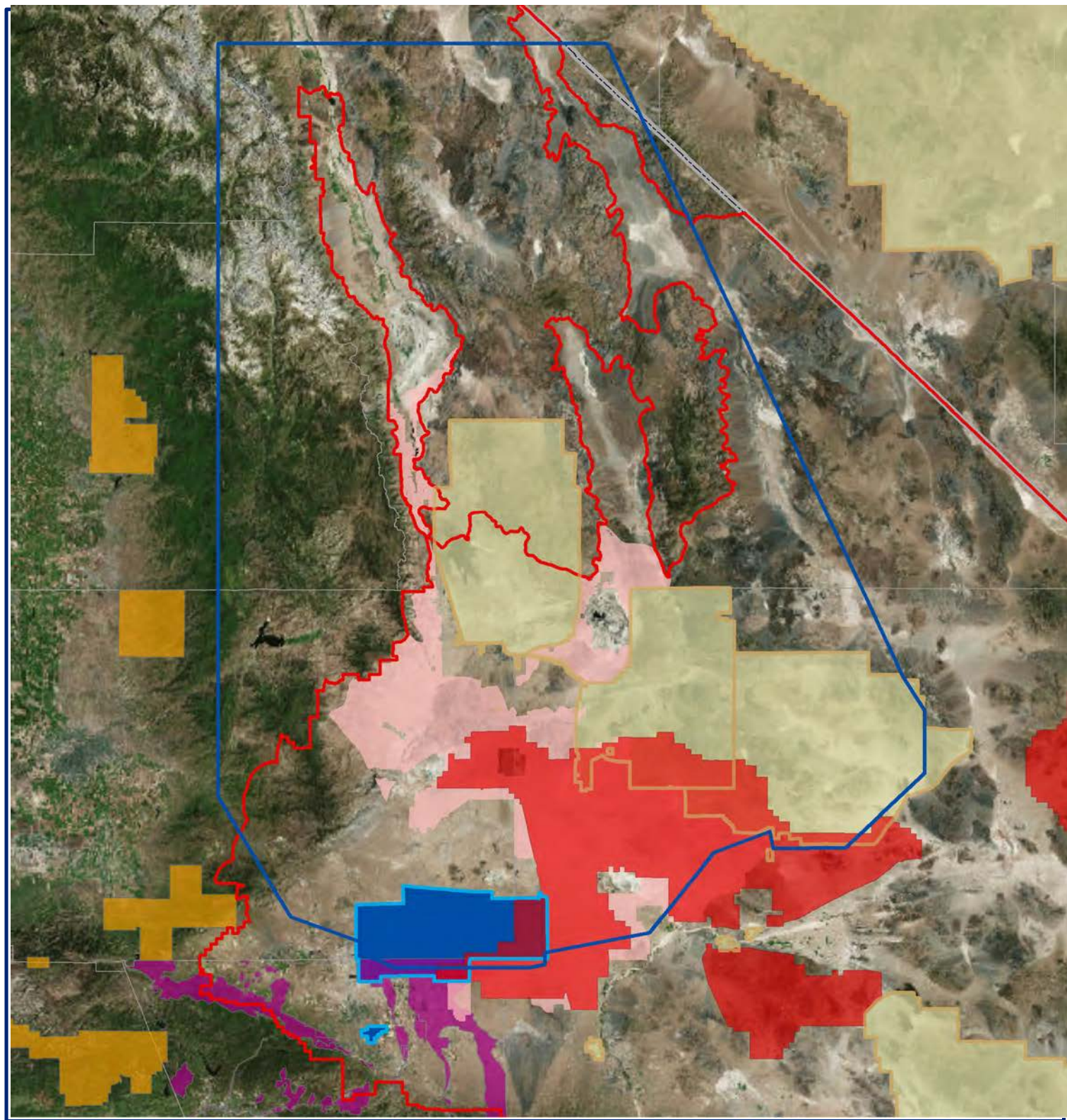
June 2017



- | | | | |
|-------------------------------------------------------------------------------------|-----------------------------|-------------------------------------------------------------------------------------|------------------------|
|  | CDCP Desert Linkage Network |  | R-2508 Complex |
|  | CEHCP Corridor |  | Edwards AFB & AFP 42 |
|  | Conserved Land |  | Military Installations |



June 2017



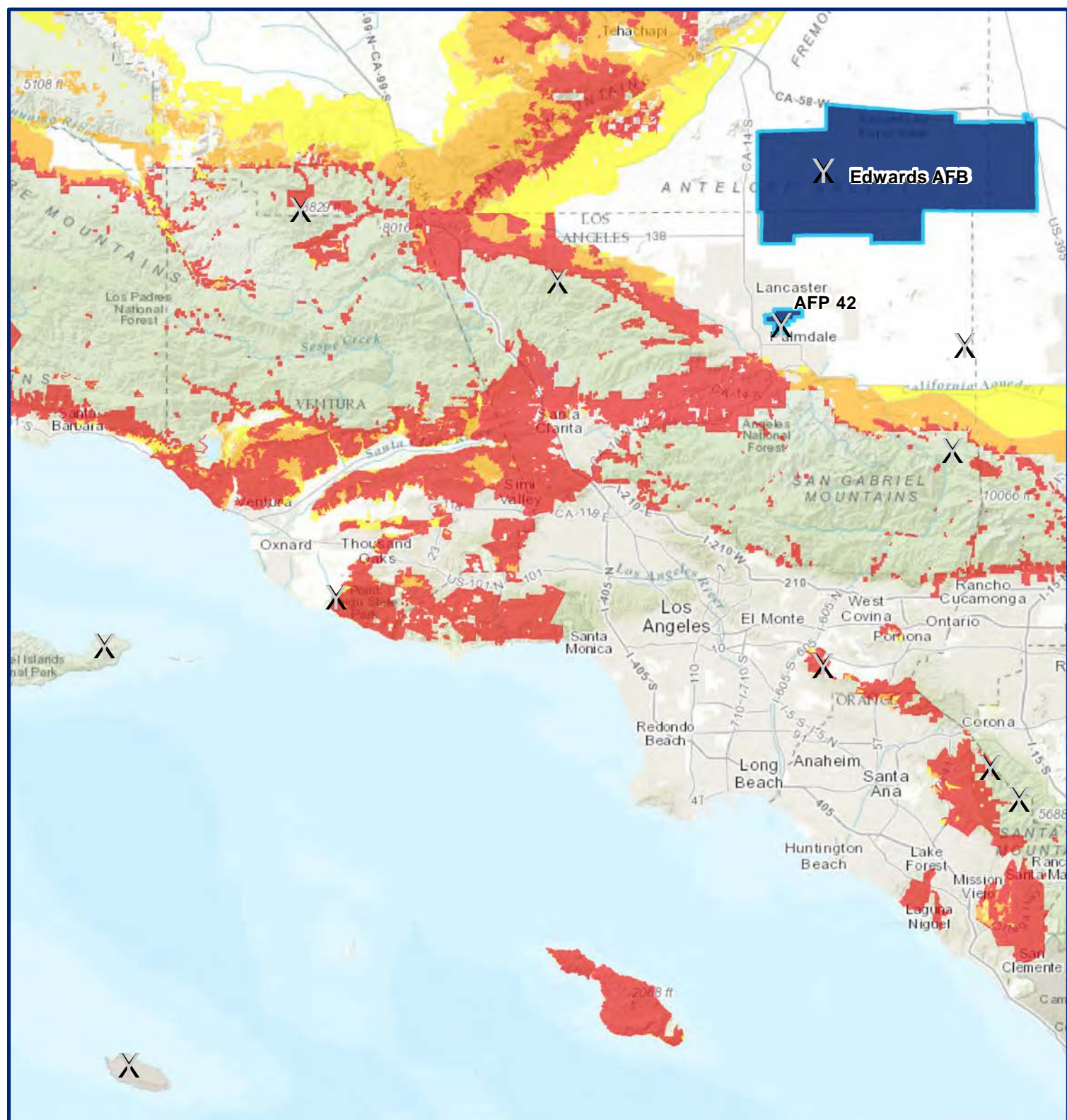
- DRECP Boundary
- Desert Tortoise (DWMA)
- California Condor Critical Habitat
- Mohave Ground Squirrel Conservation Area (WMHA)
- LA County existing and proposed

- R-2508 Complex
- Edwards AFB & AFP 42
- Military Installations
- County



0 20 40
Miles

June 2017



Microwave Relay Station / Communication Annex



Edwards AFB & AFP 42

Fire Hazards Severity Zone



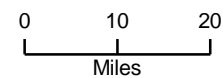
Very High



High



Moderate



June 2017

Our People

Base Population As of 5 Oct 17

Active Duty	2,258
Air Reserve & National Guard	147
Civilians	3,995
Contractors	1,281
Associates and NAF	252
Private Business	60
Base Exchange	127
Family Members	2,990
TOTAL	11,110



Base Housing



Medical Clinic



Shopping



**Child Development
Center**

EAFB and AFPL 42 Economic Impact (FY 17)

Total Economic Impact: \$1.8 Billion



Top 10 Employers in the Local Area



Source: Greater Antelope Valley Economic Alliance and EAFB Economic Impact Analysis